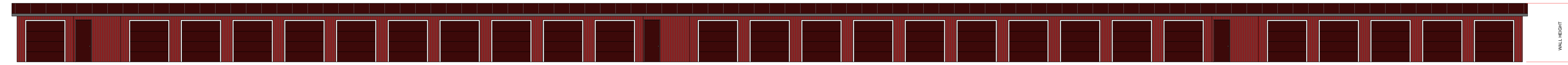
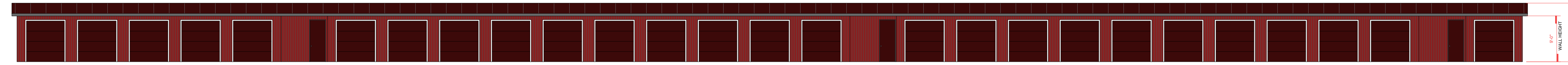


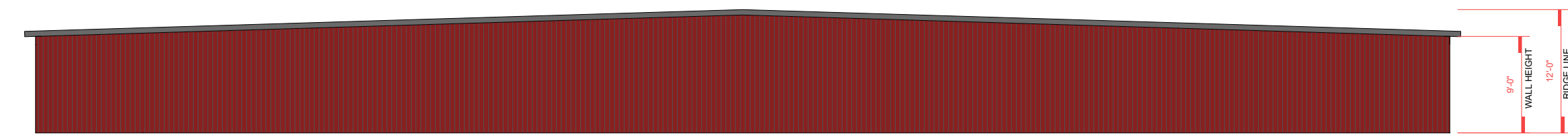
BUILDING 1



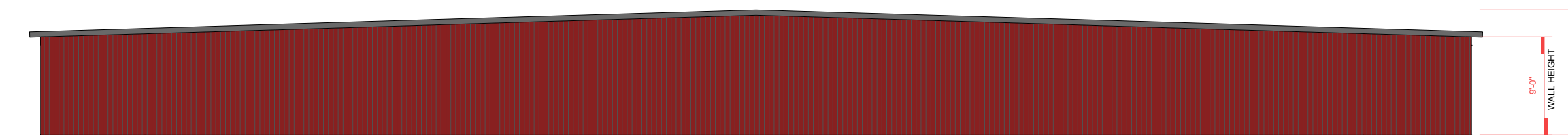
EAST ELEVATION
SCALE 1/4"=1'-0"



WEST ELEVATION
SCALE 1/4"=1'-0"

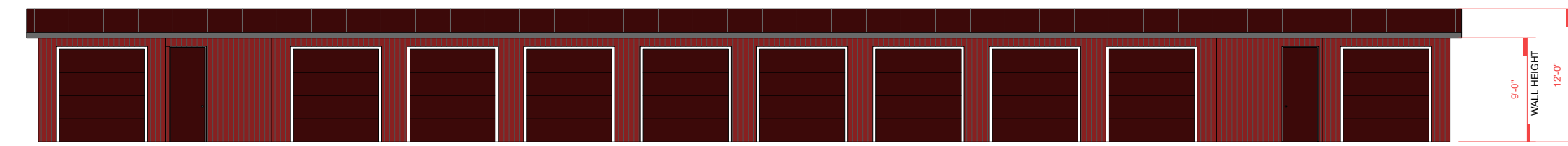


NORTH ELEVATION
SCALE 1/4"=1'-0"

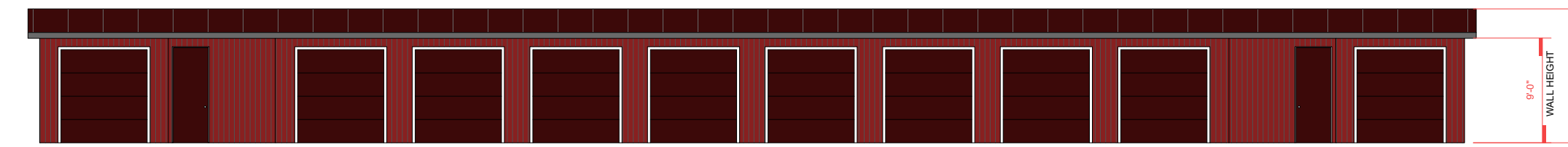


SOUTH ELEVATION
SCALE 1/4"=1'-0"

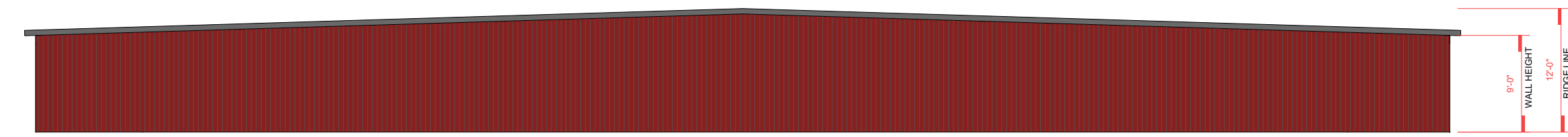
BUILDING 2



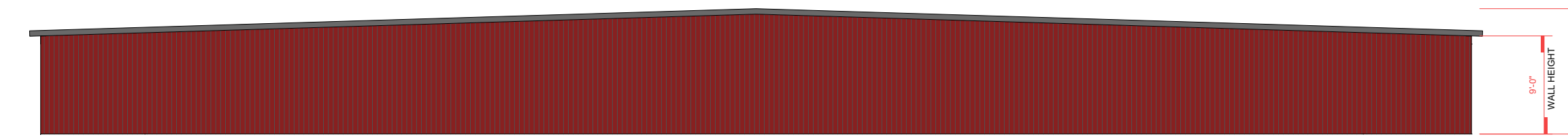
EAST ELEVATION
SCALE 1/4"=1'-0"



WEST ELEVATION
SCALE 1/4"=1'-0"

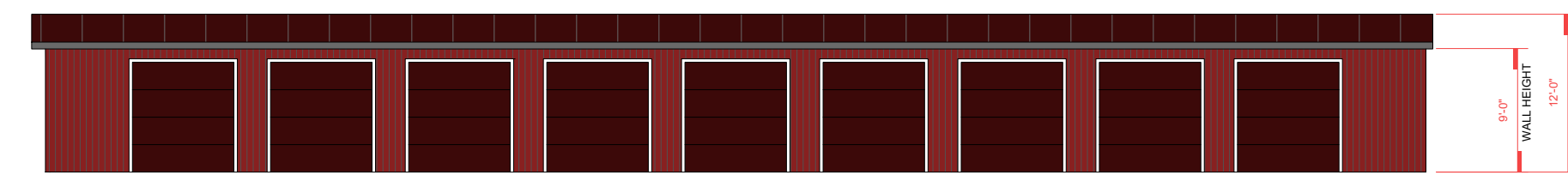


NORTH ELEVATION
SCALE 1/4"=1'-0"

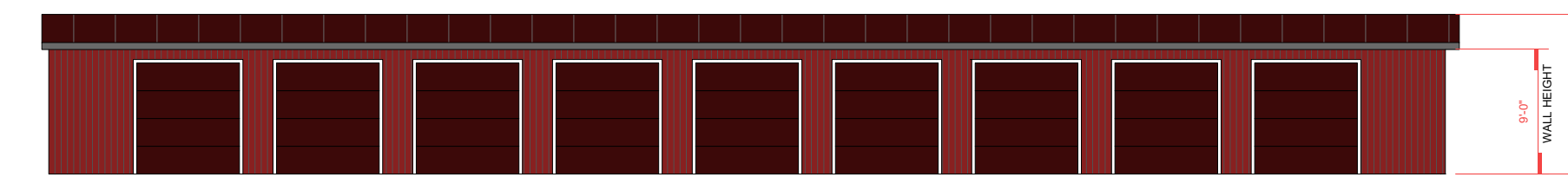


SOUTH ELEVATION
SCALE 1/4"=1'-0"

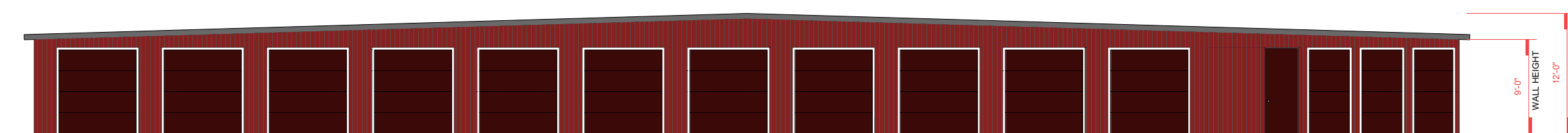
BUILDING 3



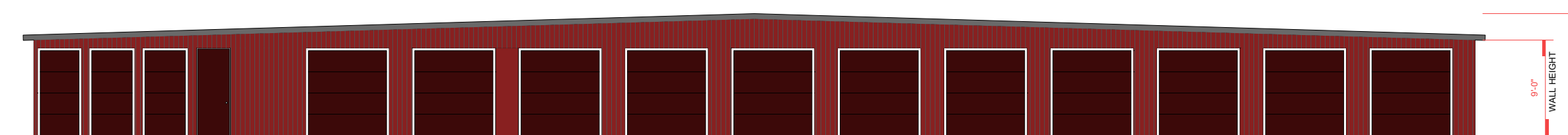
EAST ELEVATION
SCALE 1/4"=1'-0"



WEST ELEVATION
SCALE 1/4"=1'-0"



NORTH ELEVATION
SCALE 1/4"=1'-0"



SOUTH ELEVATION
SCALE 1/4"=1'-0"

REVISIONS

| ISSUE | DATE | DESCRIPTION |
|-------|------|-------------|
| | | |
| | | |
| | | |
| | | |
| | | |
| | | |
| | | |
| | | |
| | | |
| | | |

GENERAL NOTES

Building Codes and Regulations:
All construction shall comply with the California Building Code (CBC) and local jurisdictional requirements, including seismic design considerations based on the California Building Standards Code.

Additionally, adherence to Title 24 Energy Efficiency Standards for insulation and envelope performance is mandatory.

Manufacturer's Specifications:
Construction shall strictly adhere to the specifications provided by the manufacturer of the prefabricated steel building components and 26 gauge PBR panels. Any alterations or substitutions must be approved by the manufacturer and reviewed by a California licensed structural engineer.

Foundation Requirements:
Foundation design shall comply with CBC requirements and consider local soil conditions, seismic considerations, and frost depth requirements. Concrete mix designs, reinforcement detailing, and slab thickness shall conform to CBC and American Concrete Institute (ACI) standards.

Erection Instructions:
Follow the manufacturer's recommended erection sequence and procedures, ensuring compliance with CBC seismic provisions and safety regulations such as Cal/OSHA. Employ qualified erectors with experience in seismic-resistive construction methods.

Anchorage Details:
Anchor bolt sizing, spacing, and embedment depths shall comply with CBC and American Society of Civil Engineers (ASCE) 7 standards. Special considerations for high-wind and seismic regions may require additional anchorage and bracing.

Structural Design Criteria:
Design loads including seismic forces, wind loads, and snow loads shall be in accordance with CBC requirements and ASCE 7 standards. Ensure proper detailing of moment connections, bracing systems, and lateral force-resisting elements per CBC seismic design categories.

Fire Protection:
Verify compliance with CBC fire-resistive construction requirements for exterior wall assemblies and roof assemblies. Consider fire protection coatings or insulation for steel members as needed to meet CBC fire rating requirements.

Insulation and Weatherproofing:
Specify insulation materials and installation methods to meet Title 24 requirements for energy efficiency and thermal comfort. Ensure proper detailing of weather-resistant barriers, flashings, and sealants to prevent water intrusion and comply with CBC waterproofing standards.

Electrical and Mechanical Systems:
Coordinate with electrical and mechanical trades to accommodate conduit, piping, and equipment within the building envelope while maintaining compliance with CBC accessibility requirements. Design HVAC systems for energy efficiency and indoor air quality in accordance with Title 24 standards.

Safety Precautions:
Implement a comprehensive safety program in compliance with Cal/OSHA regulations, including fall protection, hazard communication, and site-specific safety training. Conduct regular safety audits and provide adequate supervision to ensure compliance with safety protocols.

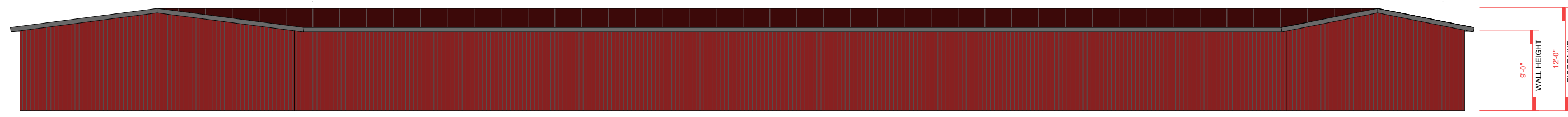
Warranty and Maintenance:
Ensure that the building owner receives warranties for steel components, PBR panels, and other materials, along with maintenance guidelines for long-term durability. Provide the building owner with a comprehensive operation and maintenance manual detailing recommended maintenance schedules and procedures.

Owner Responsibilities:
The building owner is responsible for obtaining necessary permits, inspections, and approvals from local building authorities and ensuring ongoing maintenance of the structure in accordance with manufacturer recommendations and regulatory requirements.

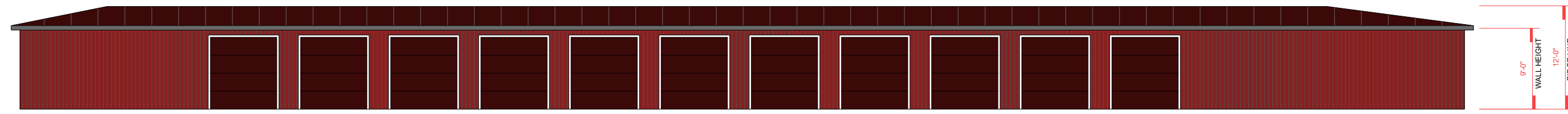
Special Instructions:
Engage with local building officials and regulatory agencies early in the design process to address any unique site conditions, permitting requirements, or environmental considerations. Document and communicate any deviations from approved construction documents to ensure compliance with CBC and jurisdictional requirements.

| | |
|--|-------------|
| TOWN OF YUCCA VALLEY | |
| BUILDINGS 1,2,3 ELEVATIONS COLOR | SHEET |
| YUCCA TRAIL STORAGE | A112 |
| 5546 YUCCA TRAIL, YUCCA VALLEY, CA 92284 | |

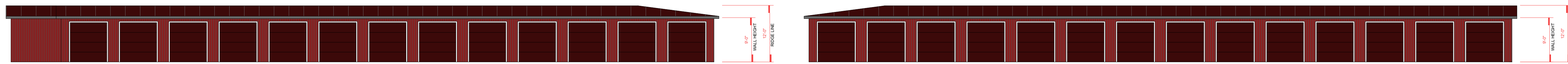
BUILDING 4



EAST ELEVATION
SCALE 1/4"=1'-0"



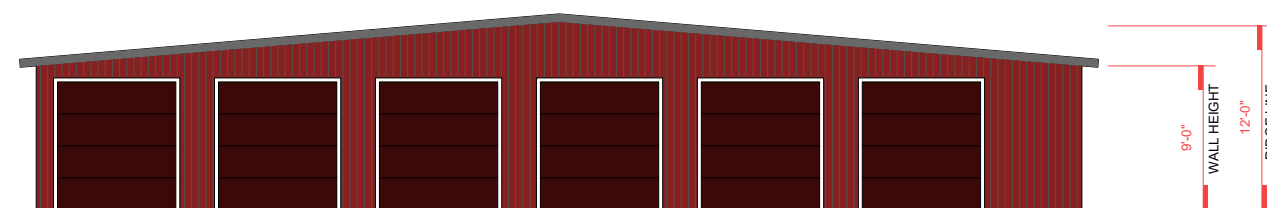
WEST ELEVATION
SCALE 1/4"=1'-0"



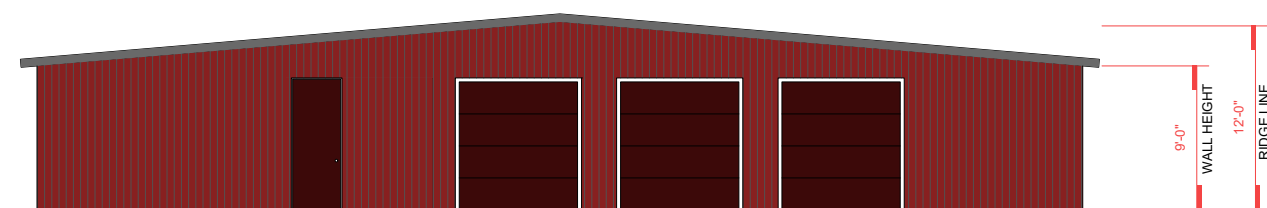
NORTH ELEVATION
SCALE 1/4"=1'-0"

SOUTH ELEVATION
SCALE 1/4"=1'-0"

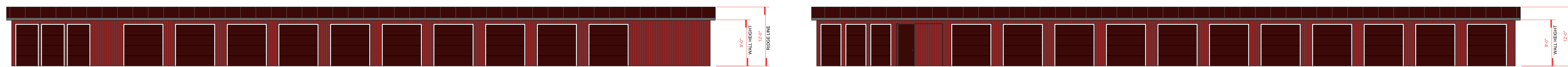
BUILDING 5



EAST ELEVATION
SCALE 1/4"=1'-0"



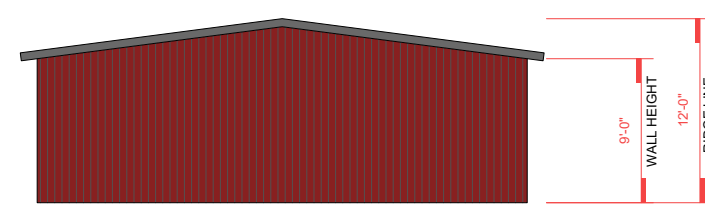
WEST ELEVATION
SCALE 1/4"=1'-0"



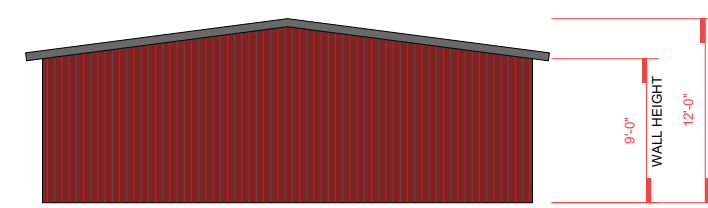
NORTH ELEVATION
SCALE 1/4"=1'-0"

SOUTH ELEVATION
SCALE 1/4"=1'-0"

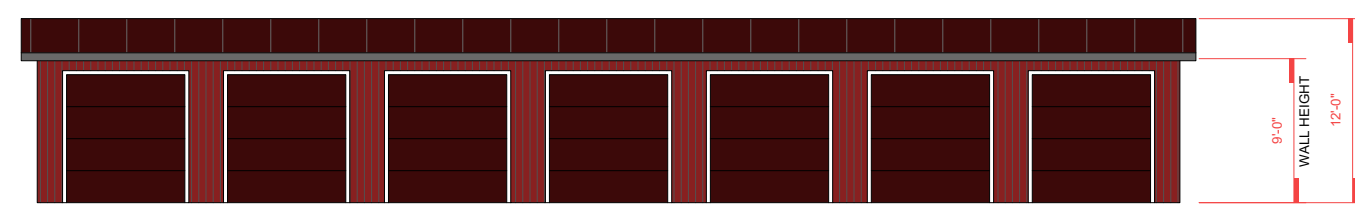
BUILDING 6



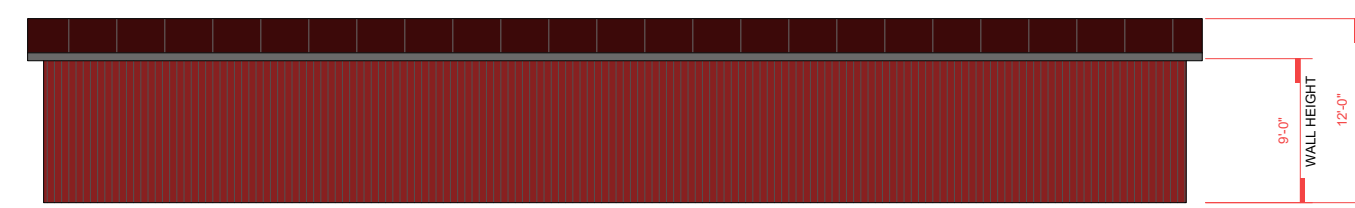
EAST ELEVATION
SCALE 1/4"=1'-0"



WEST ELEVATION
SCALE 1/4"=1'-0"



NORTH ELEVATION
SCALE 1/4"=1'-0"



SOUTH ELEVATION
SCALE 1/4"=1'-0"

REVISIONS

| ISSUE | DATE | DESCRIPTION |
|-------|------|-------------|
| | | |
| | | |
| | | |
| | | |
| | | |
| | | |
| | | |
| | | |
| | | |
| | | |

GENERAL NOTES

Building Codes and Regulations:
All construction shall comply with the California Building Code (CBC) and local jurisdictional requirements, including seismic design considerations based on the California Building Standards Code.

Additionally, adherence to Title 24 Energy Efficiency Standards for insulation and envelope performance is mandatory.

Manufacturer's Specifications:
Construction shall strictly adhere to the specifications provided by the manufacturer of the prefabricated steel building components and 26 gauge PBR panels. Any alterations or substitutions must be approved by the manufacturer and reviewed by a California licensed structural engineer.

Foundation Requirements:
Foundation design shall comply with CBC requirements and consider local soil conditions, seismic considerations, and frost depth requirements. Concrete mix designs, reinforcement detailing, and slab thickness shall conform to CBC and American Concrete Institute (ACI) standards.

Erection Instructions:
Follow the manufacturer's recommended erection sequence and procedures, ensuring compliance with CBC seismic provisions and safety regulations such as Cal/OSHA. Employ qualified erectors with experience in seismic-resistive construction methods.

Anchorage Details:
Anchor bolt sizing, spacing, and embedment depths shall comply with CBC and American Society of Civil Engineers (ASCE) 7 standards. Special considerations for high-wind and seismic regions may require additional anchorage and bracing.

Structural Design Criteria:
Design loads including seismic forces, wind loads, and snow loads shall be in accordance with CBC requirements and ASCE 7 standards. Ensure proper detailing of moment connections, bracing systems, and lateral force-resisting elements per CBC seismic design categories.

Fire Protection:
Verify compliance with CBC fire-resistive construction requirements for exterior wall assemblies and roof assemblies. Consider fire protection coatings or insulation for steel members as needed to meet CBC fire rating requirements.

Insulation and Weatherproofing:
Specify insulation materials and installation methods to meet Title 24 requirements for energy efficiency and thermal comfort. Ensure proper detailing of weather-resistant barriers, flashings, and sealants to prevent water intrusion and comply with CBC waterproofing standards.

Electrical and Mechanical Systems:
Coordinate with electrical and mechanical trades to accommodate conduit, piping, and equipment within the building envelope while maintaining compliance with CBC accessibility requirements. Design HVAC systems for energy efficiency and indoor air quality in accordance with Title 24 standards.

Safety Precautions:
Implement a comprehensive safety program in compliance with Cal/OSHA regulations, including fall protection, hazard communication, and site-specific safety training. Conduct regular safety audits and provide adequate supervision to ensure compliance with safety protocols.

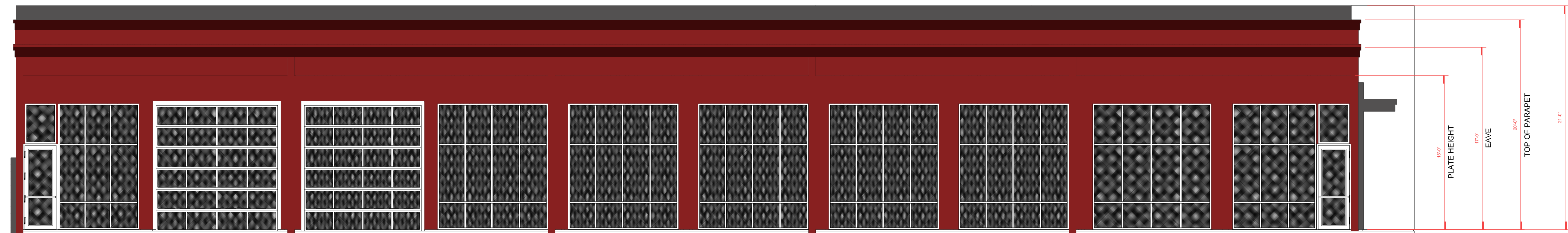
Warranty and Maintenance:
Ensure that the building owner receives warranties for steel components, PBR panels, and other materials, along with maintenance guidelines for long-term durability. Provide the building owner with a comprehensive operation and maintenance manual detailing recommended maintenance schedules and procedures.

Owner Responsibilities:
The building owner is responsible for obtaining necessary permits, inspections, and approvals from local building authorities and ensuring ongoing maintenance of the structure in accordance with manufacturer recommendations and regulatory requirements.

Special Instructions:
Engage with local building officials and regulatory agencies early in the design process to address any unique site conditions, permitting requirements, or environmental considerations. Document and communicate any deviations from approved construction documents to ensure compliance with CBC and jurisdictional requirements.

REVISIONS

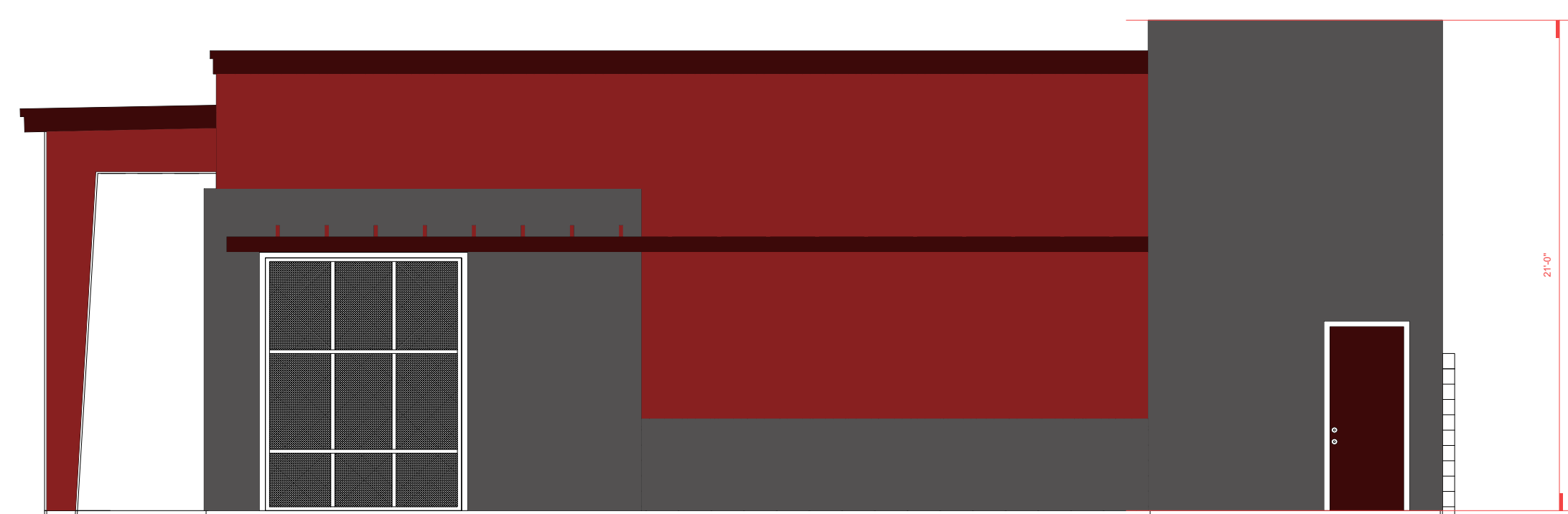
| ISSUE | DATE | DESCRIPTION |
|-------|------|-------------|
| | | |
| | | |
| | | |
| | | |
| | | |
| | | |
| | | |
| | | |
| | | |
| | | |



SOUTH ELEVATION
SCALE 1"=6'



NORTH ELEVATION
SCALE 1"=6'



EAST ELEVATION
SCALE 1"=6'



WEST ELEVATION
SCALE 1"=6'

GENERAL NOTES

Building Codes and Regulations:
All construction shall comply with the California Building Code (CBC) and local jurisdictional requirements, including seismic design considerations based on the California Building Standards Code. Additionally, adherence to Title 24 Energy Efficiency Standards for insulation and envelope performance is mandatory.

Manufacturer's Specifications:
Construction shall strictly adhere to the specifications provided by the manufacturer of the prefabricated steel building components and 26 gauge PBR panels. Any alterations or substitutions must be approved by the manufacturer and reviewed by a California licensed structural engineer.

Foundation Requirements:
Foundation design shall comply with CBC requirements and consider local soil conditions, seismic considerations, and frost depth requirements. Concrete mix designs, reinforcement detailing, and slab thickness shall conform to CBC and American Concrete Institute (ACI) standards.

Erection Instructions:
Follow the manufacturer's recommended erection sequence and procedures, ensuring compliance with CBC seismic provisions and safety regulations such as Cal/OSHA. Employ qualified erectors with experience in seismic-resistive construction methods.

Anchorage Details:
Anchor bolt sizing, spacing, and embedment depths shall comply with CBC and American Society of Civil Engineers (ASCE) 7 standards. Special considerations for high-wind and seismic regions may require additional anchorage and bracing.

Structural Design Criteria:
Design loads including seismic forces, wind loads, and snow loads shall be in accordance with CBC requirements and ASCE 7 standards. Ensure proper detailing of moment connections, bracing systems, and lateral force-resisting elements per CBC seismic design categories.

Fire Protection:
Verify compliance with CBC fire-resistive construction requirements for exterior wall assemblies and roof assemblies. Consider fire protection coatings or insulation for steel members as needed to meet CBC fire rating requirements.

Insulation and Weatherproofing:
Specify insulation materials and installation methods to meet Title 24 requirements for energy efficiency and thermal comfort. Ensure proper detailing of weather-resistant barriers, flashings, and sealants to prevent water intrusion and comply with CBC waterproofing standards.

Electrical and Mechanical Systems:
Coordinate with electrical and mechanical trades to accommodate conduit, piping, and equipment within the building envelope while maintaining compliance with CBC accessibility requirements. Design HVAC systems for energy efficiency and indoor air quality in accordance with Title 24 standards.

Safety Precautions:
Implement a comprehensive safety program in compliance with Cal/OSHA regulations, including fall protection, hazard communication, and site-specific safety training. Conduct regular safety audits and provide adequate supervision to ensure compliance with safety protocols.

Warranty and Maintenance:
Ensure that the building owner receives warranties for steel components, PBR panels, and other materials, along with maintenance guidelines for long-term durability. Provide the building owner with a comprehensive operation and maintenance manual detailing recommended maintenance schedules and procedures.

Owner Responsibilities:
The building owner is responsible for obtaining necessary permits, inspections, and approvals from local building authorities and ensuring ongoing maintenance of the structure in accordance with manufacturer recommendations and regulatory requirements.

Special Instructions:
Engage with local building officials and regulatory agencies early in the design process to address any unique site conditions, permitting requirements, or environmental considerations. Document and communicate any deviations from approved construction documents to ensure compliance with CBC and jurisdictional requirements.