

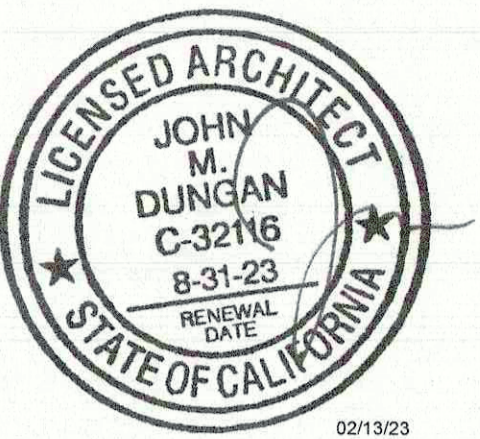
GENERAL NOTES

1. RE: A131 & A132 FOR EQUIPMENT & FURNITURE SCHEDULES.
2. ALL DIMENSIONS TO FACE OF GYPSUM BOARD, FACE OF FINISH PLYWOOD, CENTERLINE/EDGE OF FURNITURE, OR COLUMN GRID, U.N.C.
3. ALL FURNITURE SHALL BE SQUARE TO TENANT SPACE/WALLS AS SHOWN ON PLANS.
4. MAINTAIN MINIMUM 5'-0" CLEAR @ QUEUE LINE & EXIT PATHWAYS, TYP.
5. SEE INTERIOR ELEVATIONS FOR ADDITIONAL DIMENSIONS, RE: A701 & A702.
6. PROVIDE BLOCKING IN WALLS FOR WALL-MOUNTED ARTWORK, TOILET ROOM AND KITCHEN FIXTURES.
7. PROVIDE PORTABLE FIRE EXTINGUISHERS AS FOLLOWS:
 (2) TYPE ABC - SHOWN ON PLAN, FINAL LOCATION PER FIRE MARSHAL.
 (1) TYPE K - SHOWN ON PLAN, FINAL LOCATION PER FIRE MARSHAL.

JOHN M DUNGAN
ARCHITECT

8826 Santa Fe Drive
Suite 304
Overland Park, KS 66212

913-341-2466
913-341-2455 fax



COPYRIGHT 2023
THIS DRAWING IS AN INSTRUMENT OF SERVICE, AND AS SUCH, REMAINS THE PROPERTY OF DUNGAN DESIGN GROUP, LLC. PERMISSION FOR USE OF THIS DOCUMENT IS LIMITED AND CAN BE EXTENDED ONLY BY WRITTEN AGREEMENT WITH DUNGAN DESIGN GROUP, LLC.

Yucca Valley
57552-57672 Twentynine Palms Hwy
Yucca Valley, CA 92284

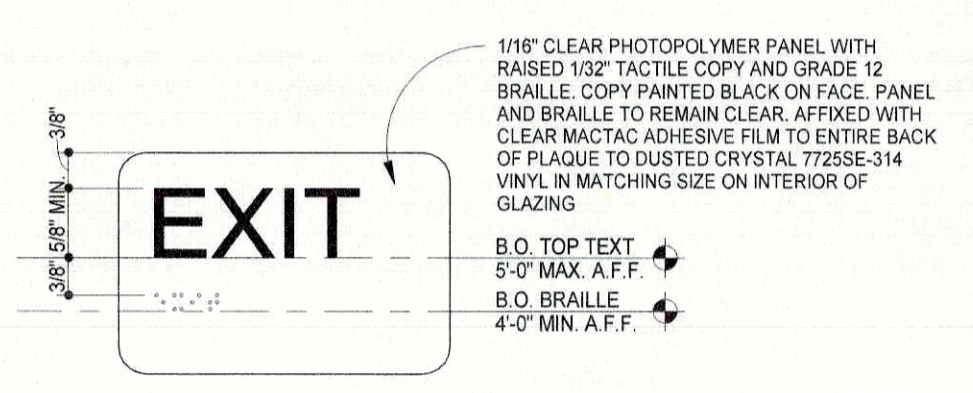
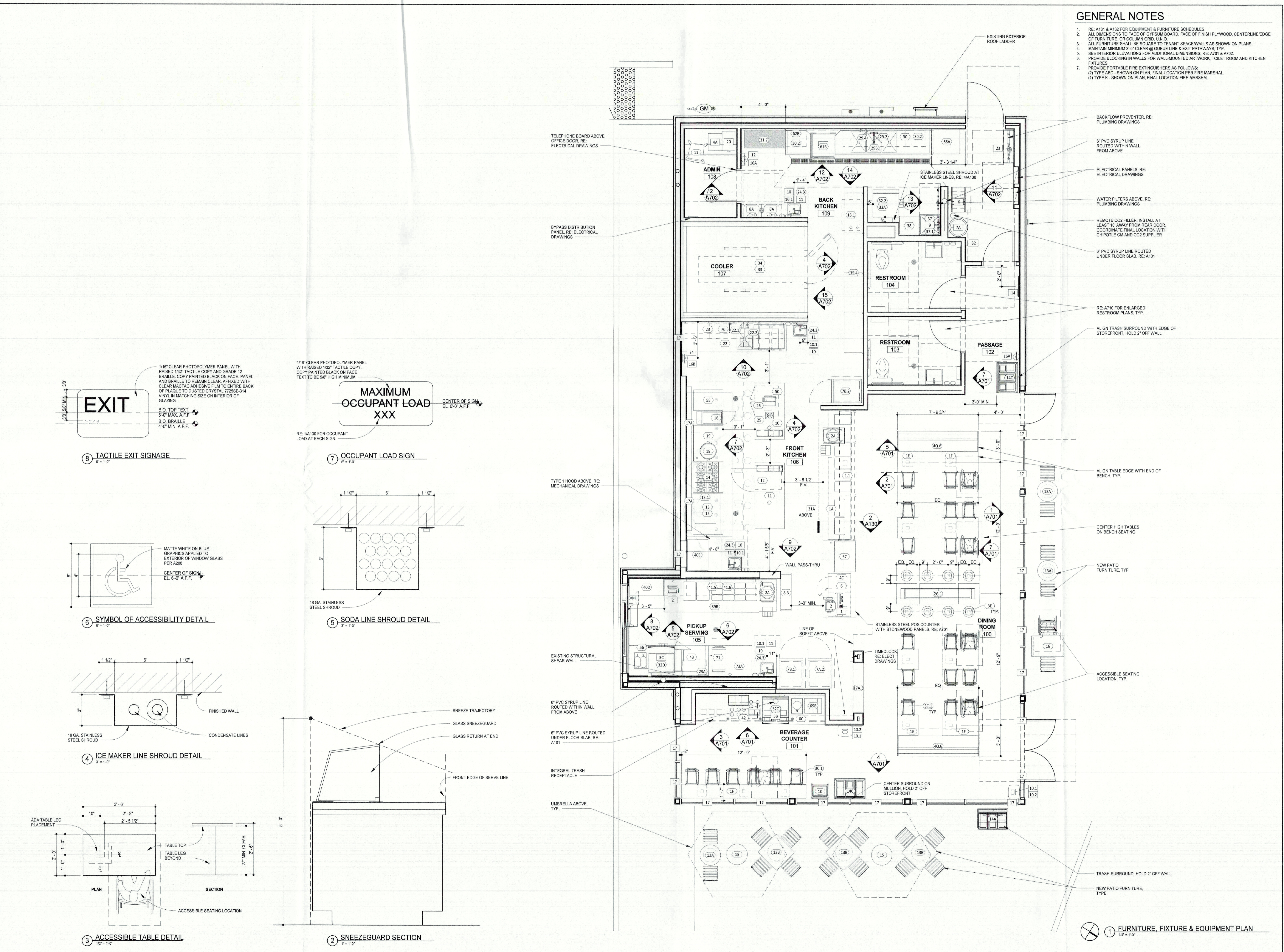
Issue Record	Permit Issue
02/13/23	Permit Issue

Revisions:

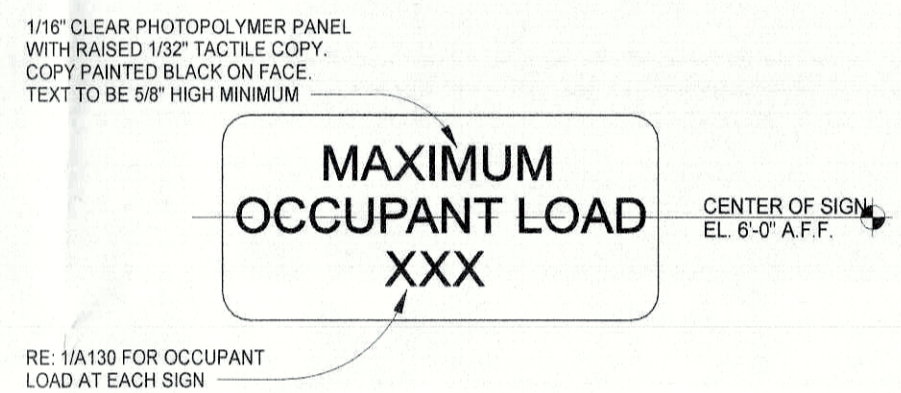
Project No:
01612

Fixtures, Furniture & Equipment Plan

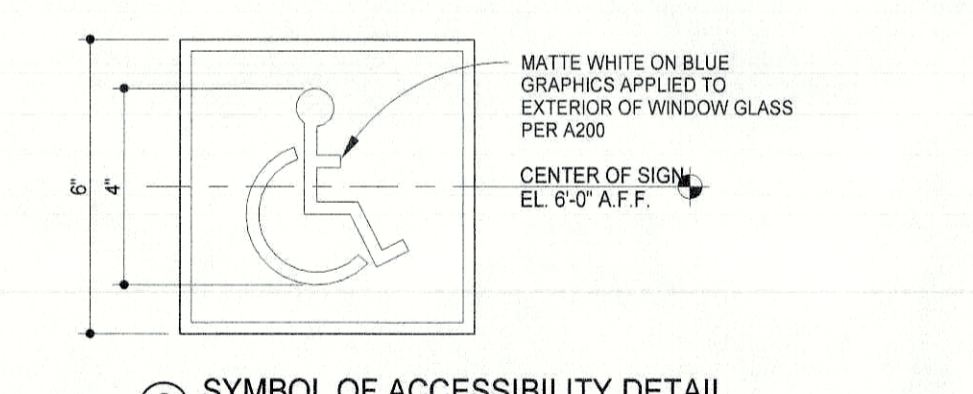
A130



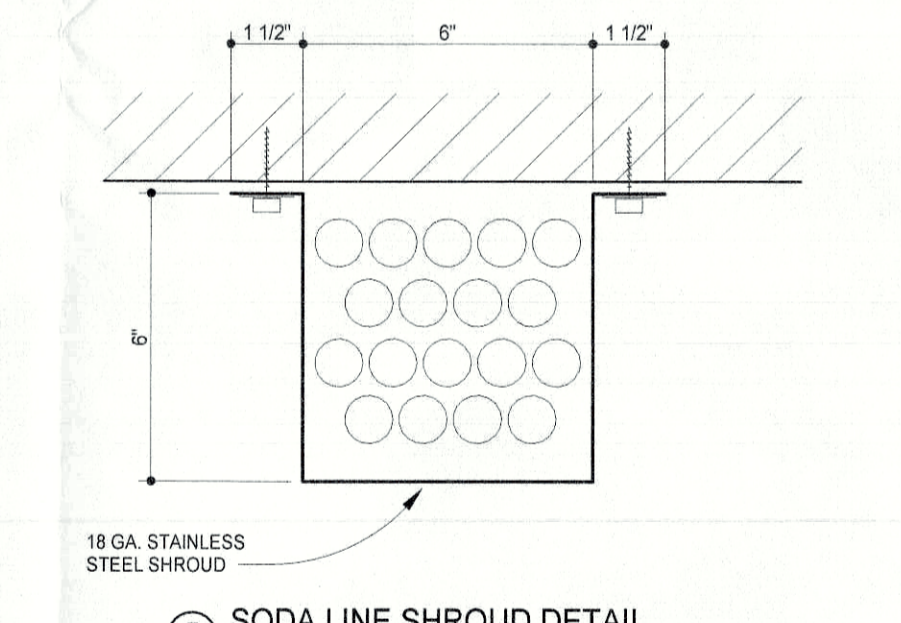
8 TACTILE EXIT SIGNAGE
8" = 1'-0"



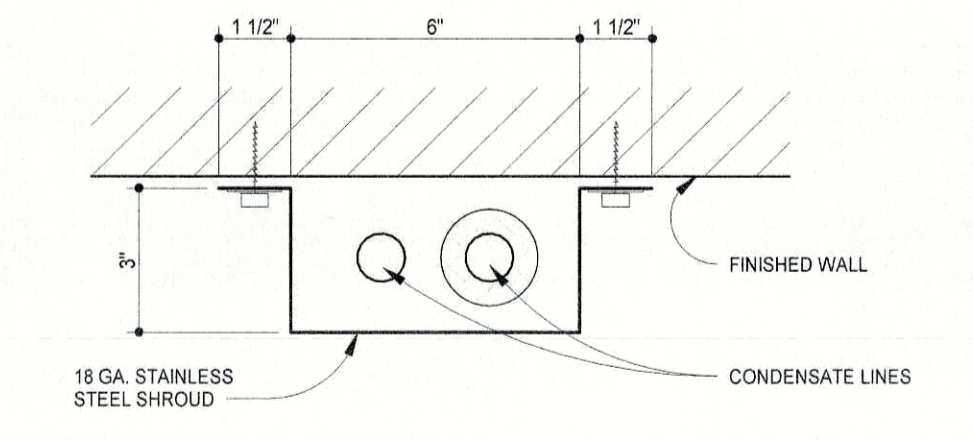
7 OCCUPANT LOAD SIGN
8" = 1'-0"



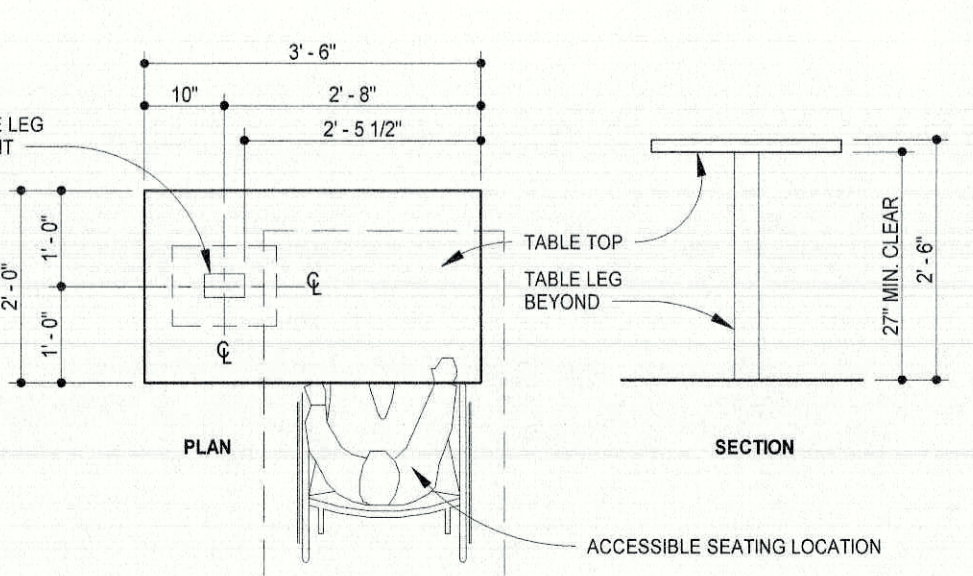
6 SYMBOL OF ACCESSIBILITY DETAIL
8" = 1'-0"



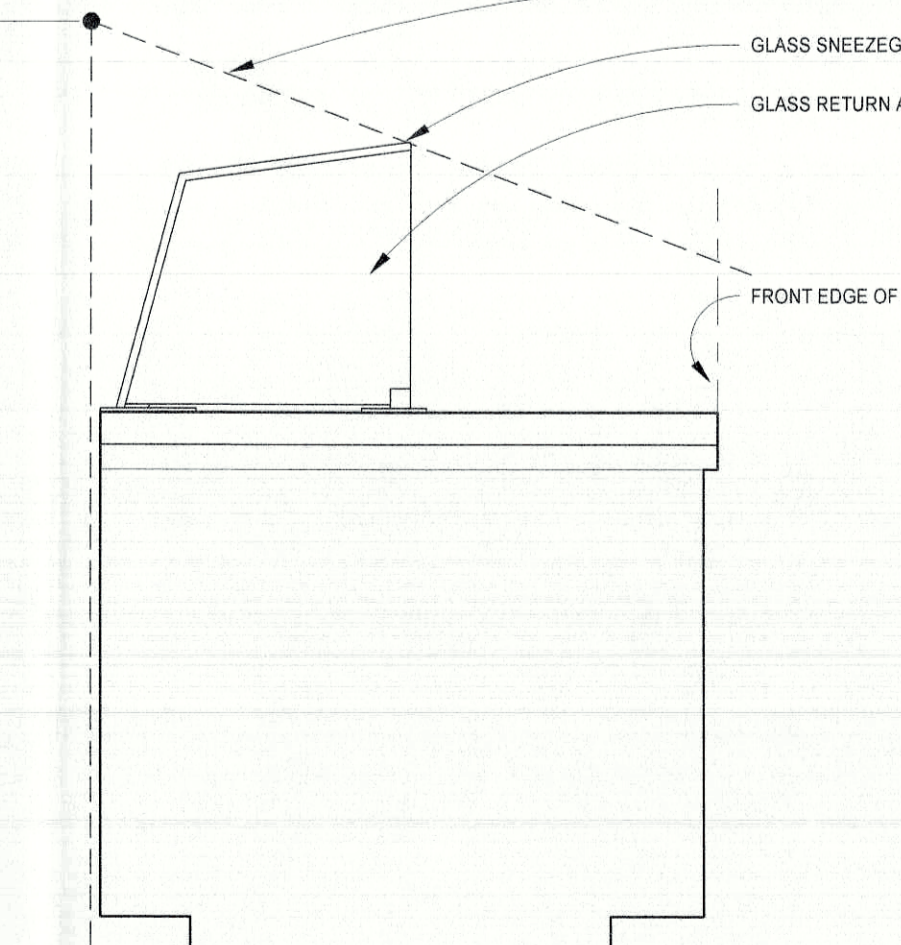
5 SODA LINE SHROUD DETAIL
3" = 1'-0"



4 ICE MAKER LINE SHROUD DETAIL
3" = 1'-0"



3 ACCESSIBLE TABLE DETAIL
1/2" = 1'-0"



2 SNEEZEGUARD SECTION
1" = 1'-0"

TYPE 1 HOOD ABOVE, RE: MECHANICAL DRAWINGS

EXISTING STRUCTURAL SHEAR WALL

8" PVC SYRUP LINE ROUTED WITHIN WALL FROM ABOVE

8" PVC SYRUP LINE ROUTED UNDER FLOOR SLAB, RE: A101

INTEGRAL TRASH RECEPTACLE

UMBRELLA ABOVE, TYP.

STAINLESS STEEL POS. COUNTER WITH STONEWOOD PANELS, RE: A701

TIMECLOCK, RE: ELECT. DRAWINGS

LINE OF SOFFIT ABOVE

WALL PASS-THRU

4'-1 1/2" F.V. ABOVE

3'-8 1/2" F.V. ABOVE

3'-0" MIN.

3'-0" MIN.

3'-0" MIN.

3'-0" MIN.

3'-0" MIN.

3'-0" MIN.