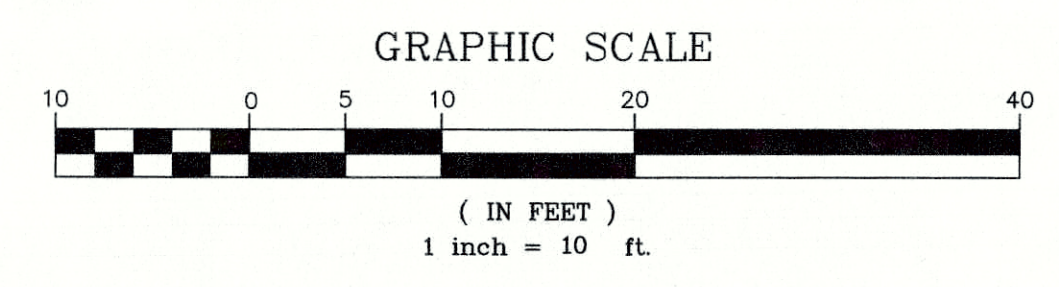
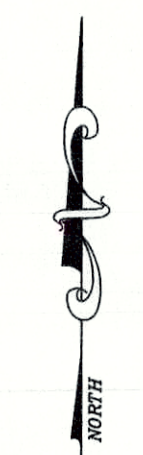
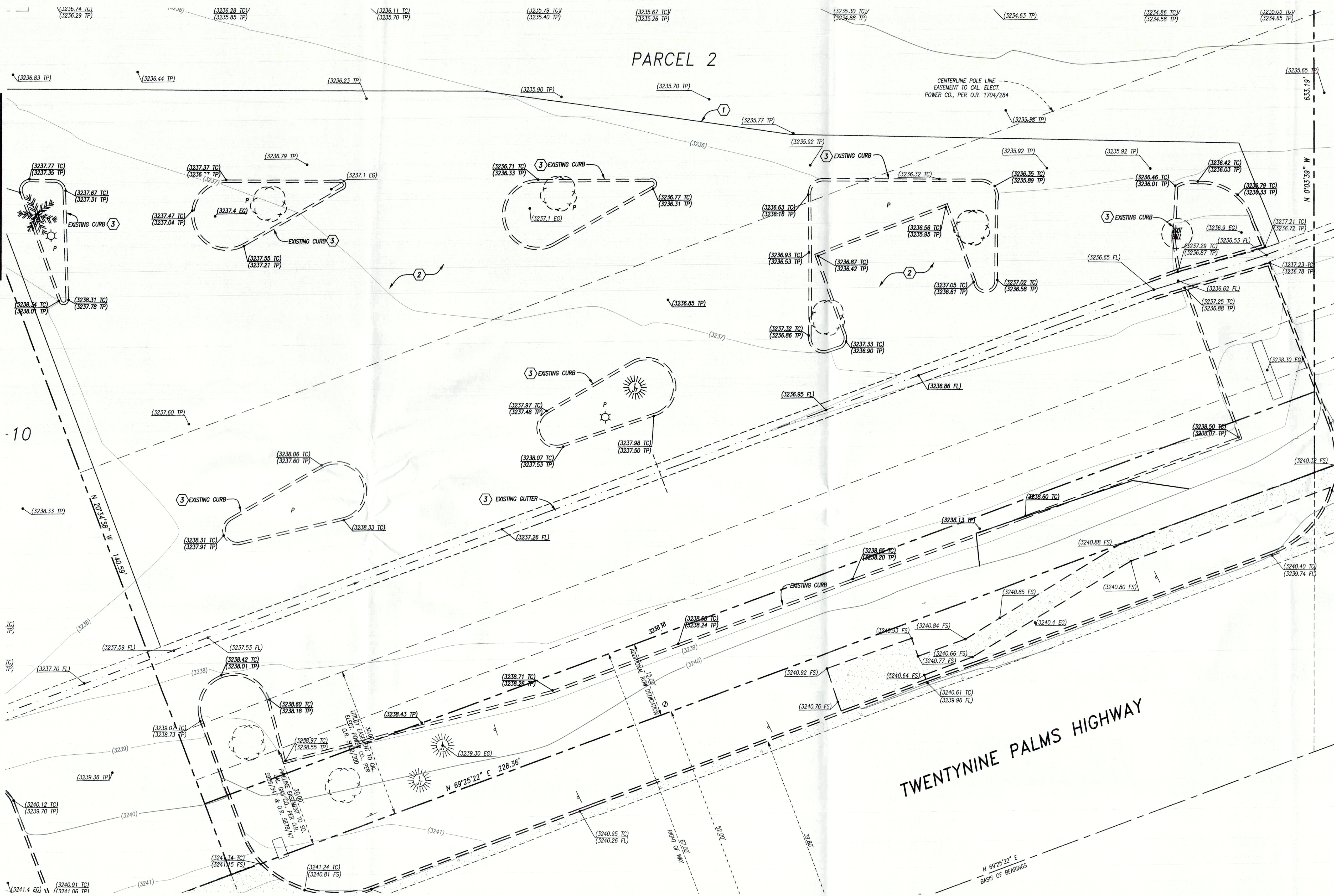


PARCEL 2

MATCHLINE-SEE SHEET 4



NOTE:

THE QUANTITIES SHOWN HEREON ARE FOR PERMIT PURPOSES ONLY. IT IS THE CONTRACTOR'S RESPONSIBILITY TO DETERMINE THE ACTUAL QUANTITIES FOR THEIR OWN BID AND PAYMENT PURPOSES.

DEMOLITION NOTES AND QUANTITY ESTIMATE:

SYM.	DESCRIPTION	QUANTITY	UNIT
1	SAWCUT EXISTING AC PAVEMENT OR CONCRETE	850	LF
2	REMOVE AND DISPOSE EXISTING AC PAVEMENT	21600	SF
3	REMOVE AND DISPOSE EXISTING CONCRETE CURB AND GUTTER	1000	LF

BENCH MARK NO.

MARK	DATE	INITIAL	DESCRIPTION	DATE	APP'VD

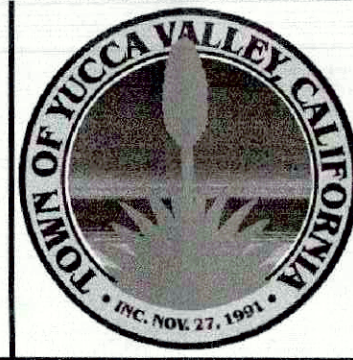
REVISIONS

MARK	DATE	INITIAL	DESCRIPTION	DATE	APP'VD

FEIRO ENGINEERING, Inc. RONALD K. FEIRO R.C.E. 52260 DATE

Civil Engineering 75-060 Gerald Ford Drive, Suite 3 Palm Desert, California 92211 (760) 346-8015 www.feiro.net

PREPARED UNDER THE DIRECT SUPERVISION OF:



APPROVED BY:

ARMANDO BALDIZZONE, PUBLIC WORKS DIRECTOR DATE

RECOMMENDED BY:

NOEL OWSLEY, TOWN ENGINEER DATE

TOWN OF YUCCA VALLEY

Precise Grading Plan - Demolition

PARCELS 1, 2, 3, 4, AND 5 OF PARCEL MAP NO. 6163 IN THE TOWN OF YUCCA VALLEY

APN: 0595-271-35,36,37,38,39

FOR: Joshua Village

SHEET 3

OF 7 SHEETS

DRAWING NO. 188d1gp01