

GENERAL NOTES

- 1. ALL WORK AND MATERIAL SHALL CONFORM TO THE 2019 EDITION OF THE UNIFORM PLUMBING CODE, C.P.C AND STATE OF CALIFORNIA AMENDMENT TO MUNICIPAL CODE, STATE HEALTH AND SAFETY ORDINANCE, LOCAL FIRE DEPT. HEALTH DEPARTMENT, AND ALL OTHER AUTHORITIES HAVING JURISDICTION.
2. OBTAIN ALL FIELD APPROVAL ON PLUMBING WORK FROM REGULATING AGENCIES WHERE REQUIRED.
3. NO WORK SHALL BE COVERED UP UNTIL IT HAS BEEN INSPECTED, TESTED AND APPROVED BY AUTHORITIES HAVING JURISDICTION.
4. VERIFY LOCATION, SIZE, DEPTH AND AVAILABILITY OF ALL EXISTING UTILITIES; SEWER, VENT, WATER AND GAS CONCERN PRIOR TO START OF ANY WORK.
5. DRAWINGS AND SPECIFICATIONS GOVERN WHERE THEY EXCEED CODE REQUIREMENT.
6. ALL PLUMBING FIXTURE LOCATIONS (WATER CLOSET, LAVATORIES, ETC.) ARE DIAGRAMMATIC AND CONTRACTOR SHALL REFER TO ARCHITECTURAL DRAWINGS FOR EXACT LOCATION.
7. ALL PLUMBING FIXTURES AND EQUIPMENT SHALL HAVE ISOLATING VALVE ON WATER SUPPLY LINES, VALVES SHALL BE LINE SIZED UNLESS NOTED OTHERWISE.
8. PROVIDE ACCESS DOORS TO ALL CONCEALED VALVES, STRAINERS, TRAP PRIMERS, WATER HAMMER ARRESTOR, ETC.
9. ALL INDIRECT DRAINS SHALL CONFORM TO CHAPTER 8 OF THE UNIFORM PLUMBING CODE. DRAINS OVER 4 FEET LENGTH BUT LESS THAN 15 FEET SHALL BE TRAPPED. DRAINS EXCEEDING 15 FEET IN LENGTH SHALL BE TRAPPED AND VENTED. DRAINS SHALL TERMINATE MINIMUM 1" ABOVE RECEPTOR.
10. A GAS SHUTOFF VALVE MUST BE INSTALLED AND LOCATED WITHIN 6 FEET OF ANY COOKING APPLIANCE AND WITHIN 3 FEET OF ANY OTHER APPLIANCE PER TITLE 24 REGULATIONS.
11. PROVIDE FLOOR DRAINS AND FLOOR SINKS WITH AN APPROVED AUTOMATIC TRAP PRIMER TO MAINTAIN TRAP SEALS AS REQUIRED BY LOCAL AUTHORITIES.
12. CONTRACTOR SHALL PROVIDE CLEAN-OUTS WHERE SHOWN AND INSTALLED AS PER SEC. 707.0 AND 719.0 OF THE UPC 2019 EDITION. CLEAN-OUTS SHALL BE ACCESSIBLE, NO CLEANOUTS SHALL OCCUR UNDER OR BEHIND ANY CASES OR FIXTURES.
13. UNDERGROUND PIPING SHALL BE LOCATED AWAY FROM BEARING FOOTINGS AND TO COMPLY WITH DETAILS ON STRUCTURAL DRAWINGS.
14. ALL PIPING IN FINISHED AREAS SHALL BE RUN CONCEALED UNLESS NOTED OTHERWISE ON DRAWINGS. EXPOSED PIPING WHEN NOTED AS SUCH SHALL BE RUN AS HIGH AS POSSIBLE AND TIGHT TO STRUCTURE.
15. ALL PIPING PENETRATING WALL, CEILING AND FLOOR SHALL BE ISOLATED FROM BUILDING STRUCTURES WITH RESILIENT SEALS.
16. ALL OPENING FOR PIPING THROUGH FIRE RATED ENCLOSURE SHALL BE CAULKED AS REQUIRED BY CODE TO MAINTAIN FIRE RATING.
17. COORDINATE ALL WORK WITH OTHER TRADES AND CONTRACTORS PRIOR TO START OF WORK.
18. THE CONTRACTOR SHALL VISIT THE JOB SITE PRIOR TO BIDDING TIME AND VERIFY ALL DIMENSIONS, LOCATIONS AND CONDITIONS.
19. THE CONTRACTOR SHALL INSTALL A COMPLETE WORKABLE PLUMBING SYSTEM IN ACCORDANCE WITH THE DRAWINGS AND TO COMPLY WITH ALL CODE REQUIREMENTS AND TO PERFORM TO THE SATISFACTION OF THE OWNER.
20. CONTRACTOR TO PROVIDE ROUGH-INS AND FINAL CONNECTIONS FOR FIXTURES AND EQUIPMENT FURNISHED BY OTHERS RELATED TO THIS WORK.
21. DO NOT SCALE FLOOR PLAN DRAWINGS FOR EXACT HORIZONTAL LOCATION OR LENGTHS OF PIPE RUNS.
22. NO VENT OUTLET SHALL TERMINATE CLOSER THAN FOUR FEET TO OR ONE FOOT ABOVE ANY DOOR, WINDOW OR GRAVITY AIR INTAKE, NOR CLOSER THAN TEN FEET TO OR THREE FEET ABOVE, ANY FORCED OR MECHANICAL AIR INTAKE, VENT OUTLETS SHALL BE A MINIMUM FOUR FEET FROM THE EDGE OF THE ROOF.
23. VENTS FROM FIXTURES WITH OVERFLOW RIM AT FLOOR LEVEL MUST RISE 6" ABOVE FLOOR LEVEL BEFORE CONNECTING TOGETHER.
24. INSTALL WATER HAMMER ARRESTOR AT THE END OF EACH RUN IN WHICH FAST CLOSING VALVES ARE INSTALLED.
25. ALL PIPES SHALL BE TIGHTLY SECURED TO THE STRUCTURE PER CODE REQUIREMENTS.
26. THIS CONTRACTOR SHALL RUN CONDENSATE DRAIN LINE FROM FREEZER AND COOLER TO FLOOR SINKS, FLOOR SINKS SHALL BE FLUSH WITH FINISHED FLOOR. ALL FLOOR SINKS UNDER CASES OR EQUIPMENT SHALL BE HALF EXPOSED AND READILY ACCESSIBLE FOR CLEANING AND INSPECTION.
27. PROVIDE AND INSTALL AN AUTO AIR VENT AT HIGH POINT OF ALL HOT WATER LINES.
28. VERIFY AND COORDINATE ROUGH-INS AND FIXTURES LOCATION WITH REFRIGERATION KITCHEN AND ARCHITECTURAL DRAWINGS PRIOR TO FABRICATION OR INSTALLATION OF MATERIALS AND PRIOR TO SLAB POURING.
29. VERIFY ALL ELECTRICAL CHARACTERISTICS WITH ELECTRICAL PLAN PRIOR TO BID OR MATERIAL PURCHASE.
30. RE-COMPACT ALL PLUMBING EXCAVATION PER GRADING AND EXCAVATION SECTION OF SPECIFICATIONS.
31. COORDINATE ALL NEW AND EXISTING PIPING AND TRENCH IN REFRIGERATED CASE ISLES WITH REFRIGERATION CONTRACTOR
32. PLUMBING CONTRACTOR TO SET IN PLACE ALL OWNER FURNISHED FIXTURES / EQUIPMENTS LISTED IN FIXTURE SCHEDULE ON THIS SHEET AS DETAILED OR OR DIRECTED IN FIELD.
33. PLUMBING CONTRACTOR TO FURNISH AND INSTALL ALL SUPPLIES, STOPS, TRAPS VALVES, SHOCK STOPS, REGULATORS AND BACKFLOW PROTECTION DEVICES PER CODE REQUIREMENTS TO OWNER FURNISHED SINKS AND EQUIPMENTS.
34. NON-LEAD SOLDERERS SHALL BE USED FOR ALL POTABLE JOINTS AND COECTIONS.

GENERAL NOTES

SCALE NONE

1

CAL-GREEN-PLUMBING NOTES - 2019:

DIV. 5.2 Water efficiency & conservation (indoor water use)
SEC. 5.303.3 20% reduction of water use-prescriptively designated
Water conserving plumbing fixtures and fittings: -
Plumbing fixtures and fittings shall comply with the following:
SEC. 5.303.3.1 Water Closets: ≤ 1.28 gal / flush
SEC. 5.303.3.2 Urinals: ≤ 0.125 GAL / FLUSH
SEC. 5.303.3.3.1 Single showerheads: ≤ 1.8 GPM @ 80 PSI
SEC. 5.303.3.3.2 Multiple Showerheads: combined flow rate of all showerheads and/or other shower outlets controlled by a single valve shall not exceed 1.8 gpm @ 80 psi or only one shower outlet is to be operation at a time
Residential Lavatory Faucet: ≤ 1.5 gpm @ 60 psi
Lavatory Faucets in Common and Public Use Areas of Residential Buildings: ≤ 0.5 gpm @ 60 psi
Metering Faucets: ≤ 0.25 gallons per cycle
Kitchen Faucets: ≤ 1.8 gpm @ 60 psi; temporary increase to 2.2 gpm allowed but shall default to 1.8 gpm
Standards for plumbing fixtures and fitting all plumbing fixtures & fitting shall comply with 2016 California plumbing code.

ENERGY NOTES

SCALE NONE

2

PIPE & FITTING SCHEDULE

Table with columns: TYPE, SIZE, MATERIAL, FITTINGS, LOCATION. Includes rows for SOIL, WASTE, VENT, STORM DRAIN; DOMESTIC WATER; NATURAL GAS LOW PRESSURE; CONDENSATE DRAIN.

PIPE MATERIALS SCHEDULE

SCALE NONE

3

FIXTURE UNIT SUMMARY

Table with columns: SERVICE, (E), NEW F.U., TOTAL F.U. Includes rows for DOMESTIC WATER, SANITARY SEWER.

SEE FIXTURE UNIT SCHEDULE FOR BREAKDOWN DETAIL ON SHEET P-3

SERVICE REQUIREMENTS

Table with columns: SERVICE, SIZE MAIN, CAPACITY. Includes rows for DOMESTIC WATER, SANITARY SEWER.

WATER PIPE SIZING CHART (COLD WATER)

Table with columns: PIPE SIZE, GPM, VELOCITY FT / SEC, FIXTURE UNITS (F - TANK, F - VALVE).

WATER PIPE SIZING CHART (HOT WATER)

Table with columns: PIPE SIZE, GPM, VELOCITY FT / SEC, FIXTURE UNITS (F-TANK).

WATER SIZING

SCALE NONE

4

WATER HEATER SCHEDULE

Table with columns: LOCATION, SERVICE, SYMBOL, DESCRIPTION, CAPACITY (GAL), BTU INPUT, RECOVERY RATE 70°F, VOLTS, PH, AMPS, SHIPPING WT. (LBS), REMARKS.

PLUMBING LEGEND

Table with columns: SYMBOL, ABB, DESCRIPTION. Includes symbols for WASTE - SEWER BELOW FLOOR, CLEAN OUT FLOOR OR GRADE, SANITARY VENT, HOT WATER, CONDENSATE DRAIN, FUEL GAS (LOW PRESSURE), WALL CLEAN OUT, GATE VALVE, ABOVE, AUTOMATIC TRAP PRIMER, CEILING, CONTINUATION, DOWN SPOUT, INVERT ELEVATION, SHUT-OFF VALVE, MOUNTED, YARD BOX, NOT TO SCALE, AUTOMATIC FIRE SPRINKLER, WATER CLOSET, LAVATORY, URINAL, EXISTING, NEW, NOT IN PLUMBING CONTRACT, TEMPERED WATER, EXISTING HOT WATER RETURN, EXISTING WASTE/SEWER, EXISTING GAS.

PLUMBING LEGENDS

SCALE NONE

5

PLUMBING FIXTURE SCHEDULE

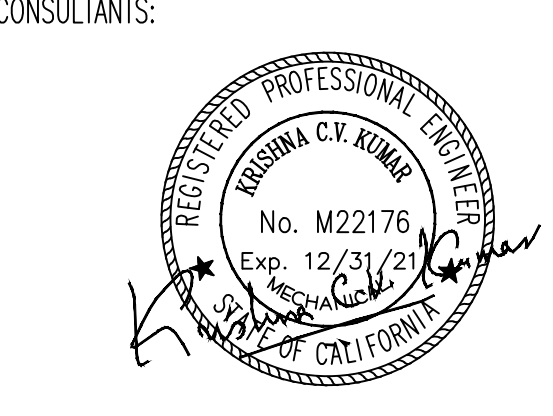
Table with columns: SYM., DESCRIPTION, W, V, CW, HW, TRAP, MNFG'R, MODEL, REMARKS. Lists fixtures like WATER CLOSET (FLUSH TANK), URINAL (FLUSH VALVE), LAVATORY, 3-COMP. SINK, PREP. SINK, MOP SINK, HAND SINK, FLOOR SINK, FLOOR DRAIN, ESPRESSO MACHINE, PITCHER RINSE, ICE MAKER, HOSE BIBB.

CALIFORNIA GREEN BUILDING STANDARDS CODE TO COMPLY WITH 20% SAVINGS PLUMBING FIXTURES SHALL BE AS FOLLOWS:
1. LAVATORIES, HAND SINKS FAUCETS SHALL BE DESIGNED TO OPERATE AT MAXIMUM 0.4 GPM @ 60 PSI.
2. KITCHEN & PREP-SINK FAUCETS SHALL BE DESIGNED TO OPERATE AT MAXIMUM 1.8 GPM @ 60 PSI.
3. FLUSHMETER TANK WATER CLOSET FAUCETS SHALL BE DESIGNED TO OPERATE AT MAXIMUM 1.28 GPM @ 60 PSI.

PLUMBING FIXTURE SCHEDULE

SCALE NONE

6



PRINTED DATE: 12-13-2021

DRAWN BY: R.T.E.

CHECKED BY: R.T.E.

PROJECT NO.: EMA-34-21

CLIENT:

DIAMOND AUTOMOTIVE CAFE

PROJECT NAME & ADDRESS: 55761 TWENTYNINE PALMS HWY YUCCA VALLEY, CA 92284

CLIENT:

APPROVALS

Table with columns: APPROVED BY, INITIALS, DATE. Includes entries for ISSUED FOR PLAN CHK and ISSUED FOR HEALTH DEPT. CORRECT.

SHEET TITLE

PLUMBING LEGEND, GENERAL NOTES, SCHEDULES, SUMMARY, & CALCULATIONS

SHEET NUMBER

P-1



**CONSULTING ENGINEERS**  
MECHANICAL - ELECTRICAL - PLUMBING  
2277 TOWNSGATE RD, SUITE 216  
WESTLAKE VILLAGE CA 91361  
TEL: 909-371-7400 FAX: 909-371-7401

CONSULTANTS:



PRINTED DATE: 12-13-2021

DRAWN BY: R.T.E.

CHECKED BY: R.T.E.

PROJECT NO.: EMA-34-21

CLIENT:

**DIAMOND AUTOMOTIVE CAFE**

PROJECT NAME & ADDRESS:

55761 TWENTYNINE PALMS HWY  
YUCCA VALLEY, CA 92284

CLIENT:

APPROVALS

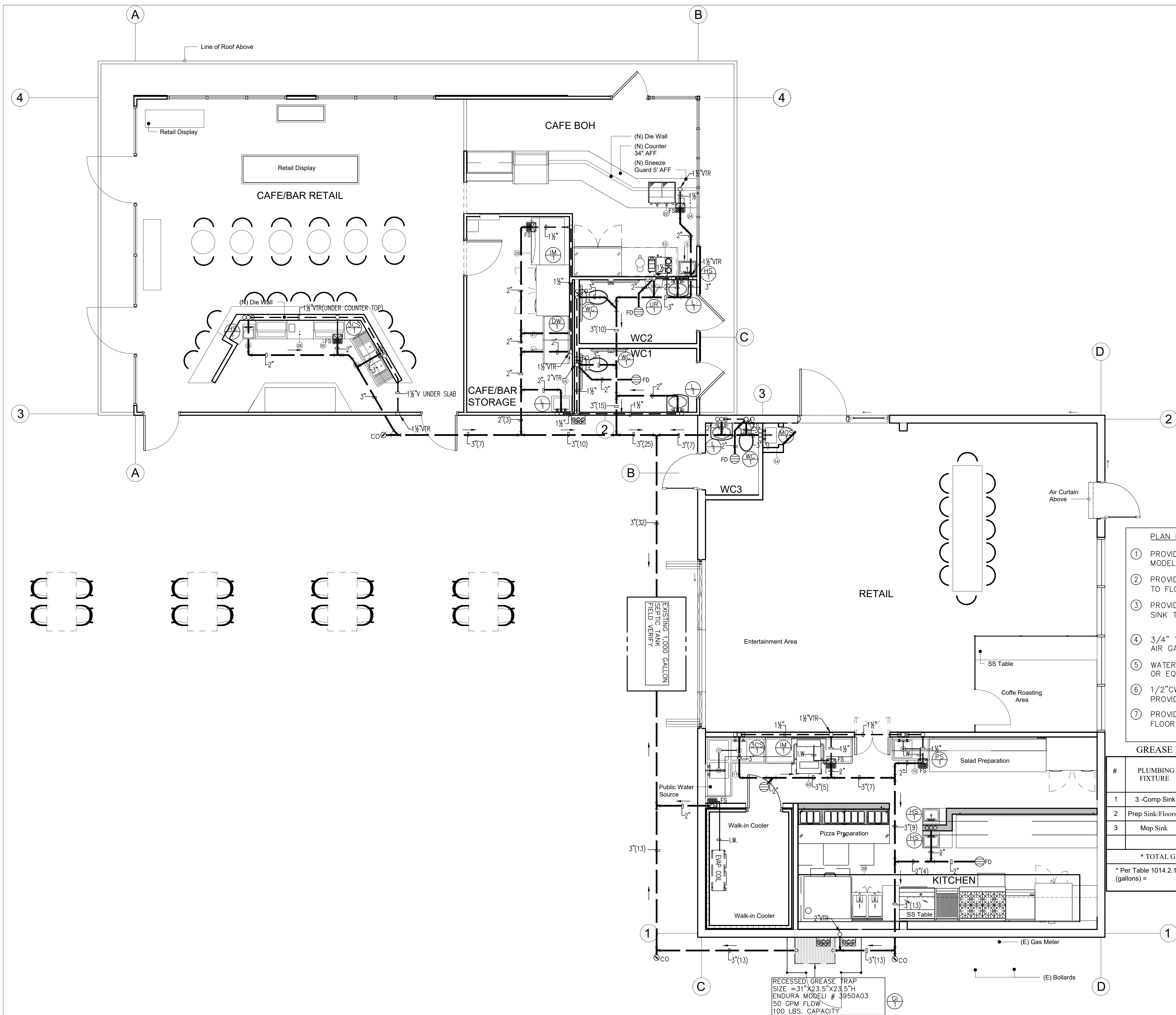
| APPROVED BY                      | INITIALS | DATE              |
|----------------------------------|----------|-------------------|
| ISSUED FOR PLAN CHK              | R.T.E.   | DECEMBER 13, 2021 |
| ISSUED FOR HEALTH DEPT. CORRECT. | R.T.E.   | MARCH 17, 2022    |

SHEET TITLE

WASTE/VENT PLUMBING PLAN

SHEET NUMBER

P-2



**PLAN KEY NOTES**

- 1 PROVIDE 1/2" CW FOR TRAP PRIMER, "J.R.SMITH", MODEL: 2699 OR EQUAL.
- 2 PROVIDE MIN. 3/4" INDIRECT DRAIN FROM APPLIANCE TO FLOOR SINK WITH 2" AIR GAP.
- 3 PROVIDE MIN. 2" INDIRECT DRAIN FROM PREP. SINK TO FLOOR SINK WITH 2" AIR GAP.
- 4 3/4" T&P DRAIN DISCHARGE TO DRY WELL WITH 2" AIR GAP.
- 5 WATER HAMMER ARRESTOR, "SMITH", MODEL: 5020, OR EQUAL.
- 6 1/2" CW DN. TO ICE MAKER WITH APPROVED BFP. PROVIDE WATER FILTER PER MFR'S REQUEST.
- 7 PROVIDE 1/2" DRAIN FROM BACKFLOW PREVENTER TO FLOOR SINK WITH FUNNEL, 1" AIR GAP.

GREASE INTERCEPTOR (GGI) SIZE WORKSHEET

| #   | PLUMBING FIXTURE    | FIXTURE QUANTITY | TRAP SIZE        | DFU PLUMBING FIXTURE | TOTAL DFU |
|---|---------------------|------------------|------------------|----------------------|-----------|
| 1   | 3-Comp Sink         | 1                | 1 1/2" x 2" x 3" | 3                    | 3         |
| 2   | Prep Sink/Floorsink | 1                | 1 1/2" x 2" x 3" | 2                    | 2         |
| 3   | Mop Sink            | 1                | 1 1/2" x 2" x 3" | 3                    | 3         |
| * TOTAL GREASE WASTE PLUMBING FIXTURES DFU's:                             |                     |                  |                  |                      | 8         |
| * Per Table 1014.2.1, Gravity Grease Interceptor (GGI) Volume (gallons) = |                     |                  |                  |                      | 60GPM     |

RECESSED GREASE TRAP  
SIZE = 31" X 23.5" X 23.5" H  
ENDURA MODEL # 3950A03  
50 GPM FLOW  
100 LBS. CAPACITY

WASTE/VENT PUMBING FLOOR PLANS

SCALE 1/4"=1'-0"

1



**CONSULTING ENGINEERS**  
MECHANICAL - ELECTRICAL - PLUMBING  
2277 TOWNSGATE RD. SUITE 216  
WESTLAKE VILLAGE CA 91361  
TEL: 909-371-7400 FAX: 909-371-7401

CONSULTANTS:



PRINTED DATE: 12-13-2021

DRAWN BY: R.T.E.

CHECKED BY: R.T.E.

PROJECT NO.: EMA-34-21

CLIENT:

**DIAMOND AUTOMOTIVE CAFE**

PROJECT NAME & ADDRESS:  
**55761 TWENTYNINE PALMS HWY  
YUCCA VALLEY, CA 92284**

CLIENT:

APPROVALS

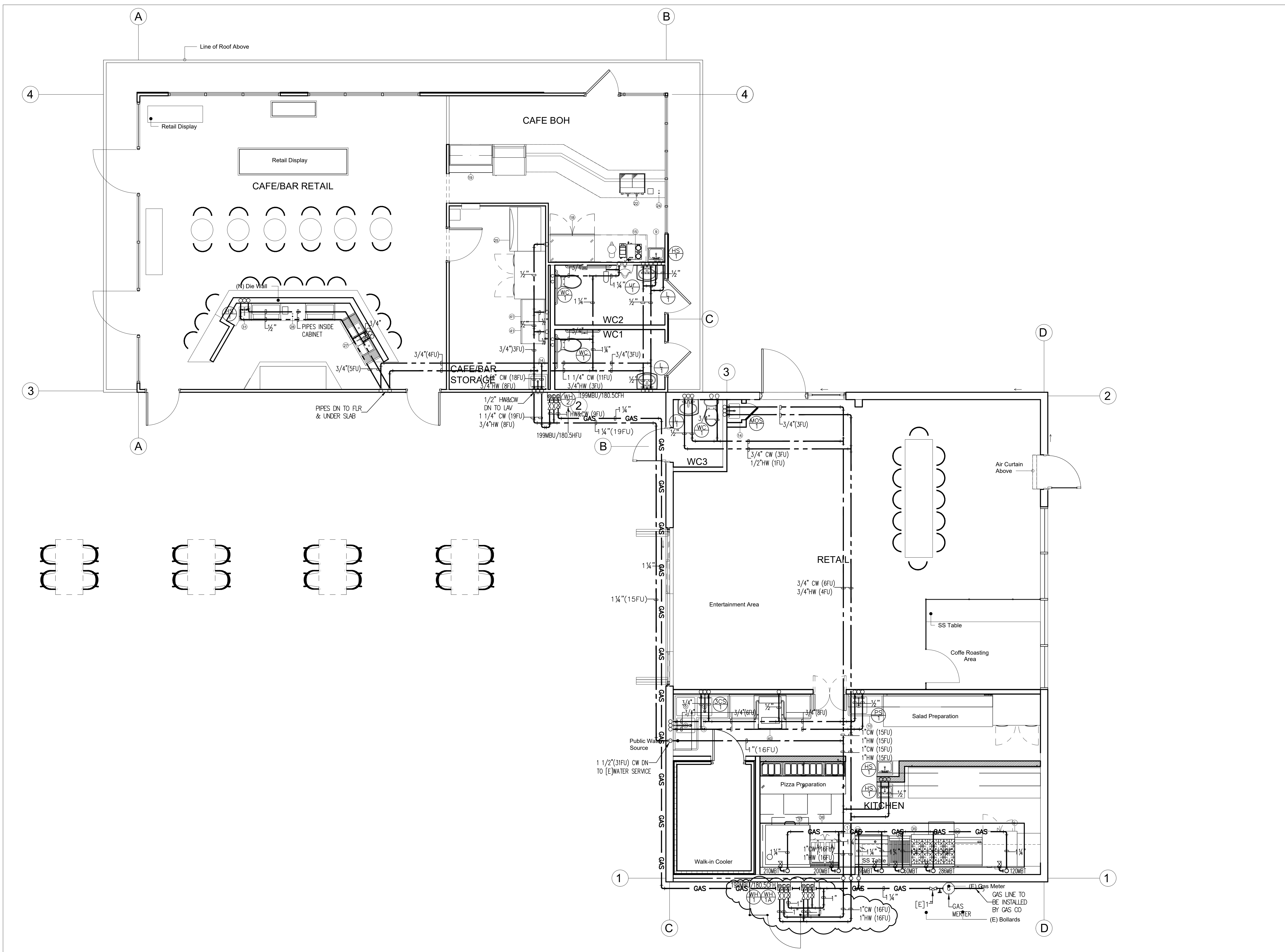
| APPROVED BY                      | INITIALS | DATE              |
|----------------------------------|----------|-------------------|
| ISSUED FOR PLAN CHK              | R.T.E.   | DECEMBER 13, 2021 |
| ISSUED FOR HEALTH DEPT. CORRECT. | R.T.E.   | MARCH 17, 2022    |

SHEET TITLE

**HOT/COLD WATER & GAS PLUMBING FLOOR PLAN**

SHEET NUMBER

**P-3**

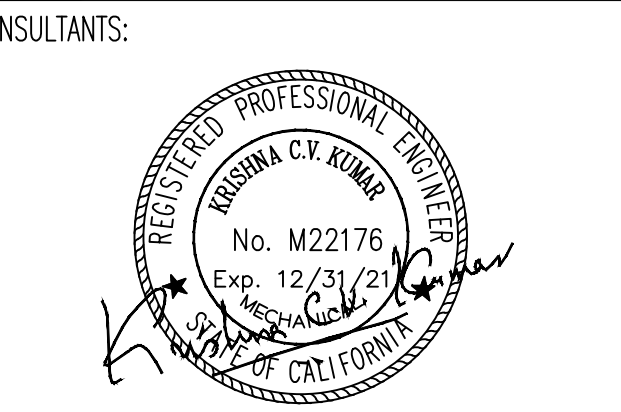


**HOT/COLD AND GAS PLUMBING FLOOR PLAN**

SCALE  
NONE

4





PRINTED DATE: 12-13-2021

DRAWN BY: R.T.E.

CHECKED BY: R.T.E.

PROJECT NO.: EMA-34-21

CLIENT:

**DIAMOND AUTOMOTIVE CAFE**

PROJECT NAME & ADDRESS:

55761 TWENTYNINE PALMS HWY  
YUCCA VALLEY, CA 92284

CLIENT:

APPROVALS

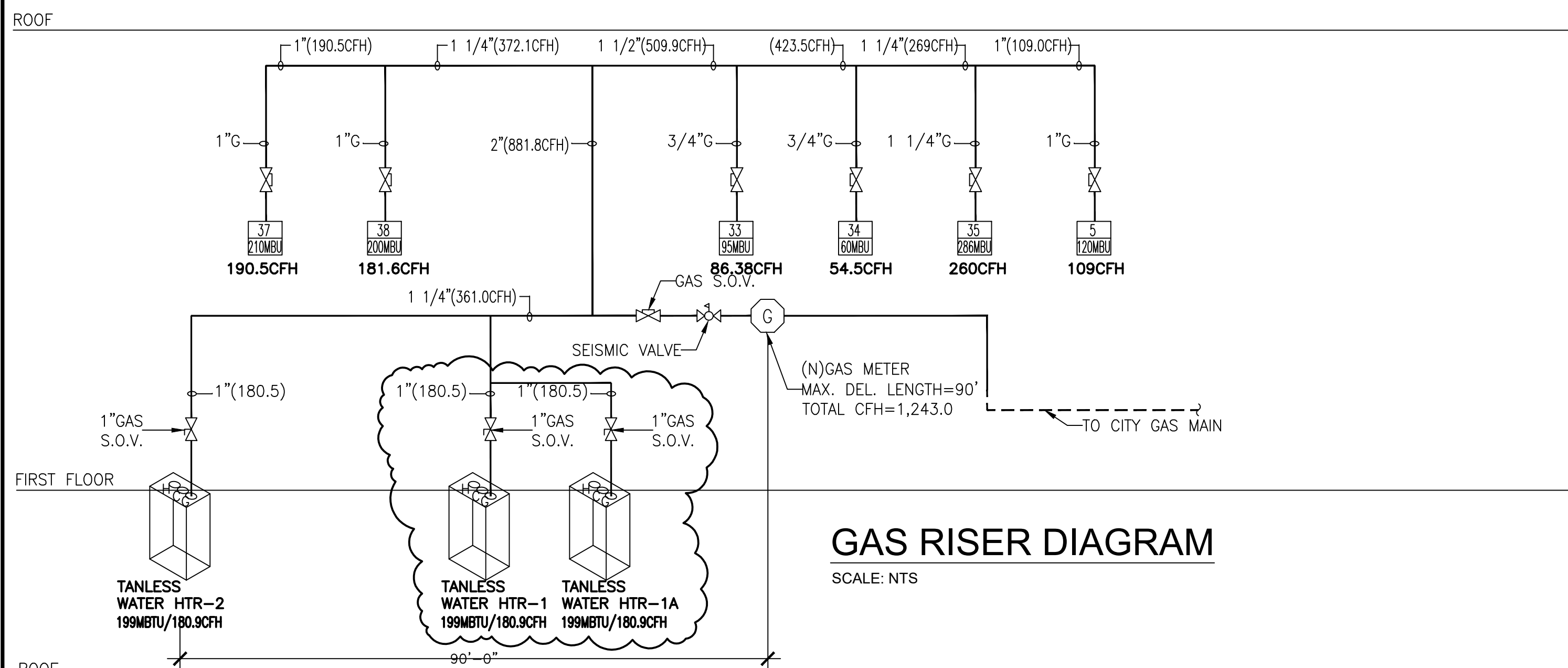
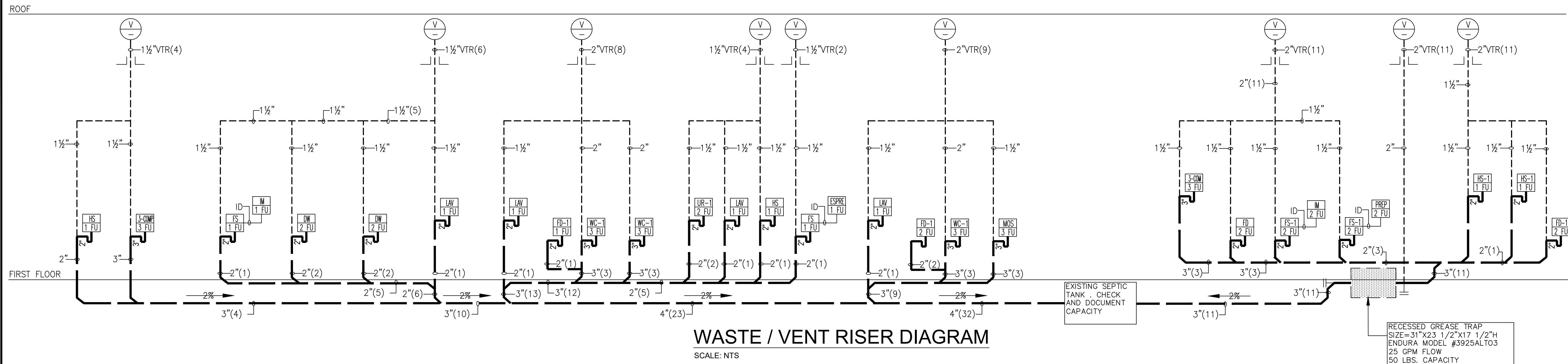
| APPROVED BY                      | INITIALS | DATE              |
|----------------------------------|----------|-------------------|
| ISSUED FOR PLAN CHK              | R.T.E.   | DECEMBER 13, 2021 |
| ISSUED FOR HEALTH DEPT. CORRECT. | R.T.E.   | MARCH 17, 2022    |

SHEET TITLE

WASTE & VENT RISER DIAGRAM,  
GAS RISER DIAGRAM, &HOT/  
COLD WATER RISER DIAGRAM

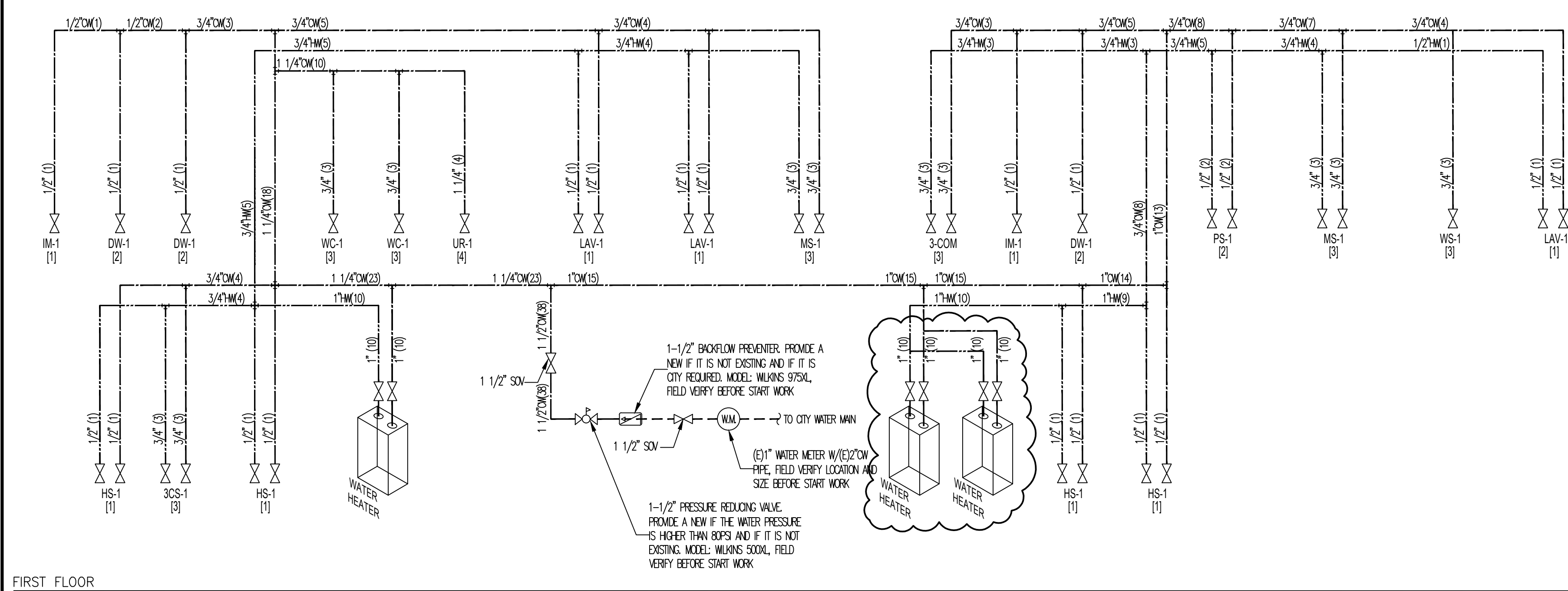
SHEET NUMBER

**P-4**



|   |            |
|---|------------|
| TOTAL FIXTURE UNITS                               | 51.5       |
| DEMAND GALLONS PER MINUTE                         | 19         |
| STREET PRESSURE: HI=131, LO=42                    | +75 PSI    |
| PRESSURE AFTER BOOSTER PUMP                       | N/A        |
| LOSS THRU 3/4" METER (NEW)                        | -3.0 PSI   |
| LOSS THRU 1/2" BACKFLOW PREVENTER (NEW)           | -14.0 PSI  |
| LOSS THRU 1/2" P.R.V. (NEW)                       | -8.2 PSI   |
| ELEVATION LOSS..... [0.433 X 25 FT.]              | -10.83 PSI |
| RESIDUAL PRESSURE                                 | -25.0 PSI  |
| TOTAL FRICTION LOSS                               | 61.03 PSI  |
| AVAILABLE PRESSURE FOR LOSS..... [75.0 - 61.03]   | 13.97 PSI  |
| TOTAL DEVELOPED LENGTH OF PIPE                    | 150 FEET   |
| ALLOWABLE LINE LOSS /100 FT. [ (13.97 x 100)/150] | 9.31 PSI   |

| DESCRIPTION          | QTY | WSFU  | TOTAL       | DFU          | TOTAL     |
|----------------------|-----|-------|-------------|--------------|-----------|
| WATER CLOSET         | 3   | 3     | 9           | 3            | 6         |
| URINAL               | 1   | 4     | 4           | 2            | 2         |
| LAVATORY             | 3   | 1     | 3           | 1            | 2         |
| 3-COMP SINK          | 3   | 3     | 9           | 3            | 9         |
| PREP SINK INDIR      | 1   | 2     | 2           | 2            | 2         |
| MOP SINK             | 1   | 3     | 3           | 3            | 3         |
| HAND SINK            | 5   | 1     | 5           | 1            | 5         |
| DISH WASHER          | 3   | 4     | 12          | 2            | 6         |
| ICE MACHINE INDIR    | 2   | 1     | 2           | -----        | -----     |
| ESPRESSO MACH. INDIR | 1   | ----- | -----       | 1            | 1         |
| FLOOR SINK           | 4   | ----- | -----       | 1            | 4         |
| HOSE BIBB            | 1   | 2.5   | 2.5         | -----        | -----     |
| <b>TOTAL</b>         |     |       | <b>51.5</b> | <b>TOTAL</b> | <b>40</b> |



| PIPE SIZE-IN | 1/2" | 3/4" | 1" | 1 1/4" | 1 1/2" | 2"  | 2 1/2" | 3"  | 4"   |
|--------------|------|------|----|--------|--------|-----|--------|-----|------|
| CW_FV        | 0    | 0    | 0  | 8      | 27     | 136 | 358    | 699 | 1743 |
| CW_FT        | 2    | 8    | 20 | 42     | 85     | 260 | 474    | 747 | 1743 |
| HW           | 2    | 8    | 17 | 29     | 48     | 120 | 246    | 412 | 851  |

**COLD / HOT WATER RISER DIAGRAM**  
SCALE: NTS  
**PLUMBING RISERS DIAGRAMS**

SCALE  
NONE

1



**Specifications**

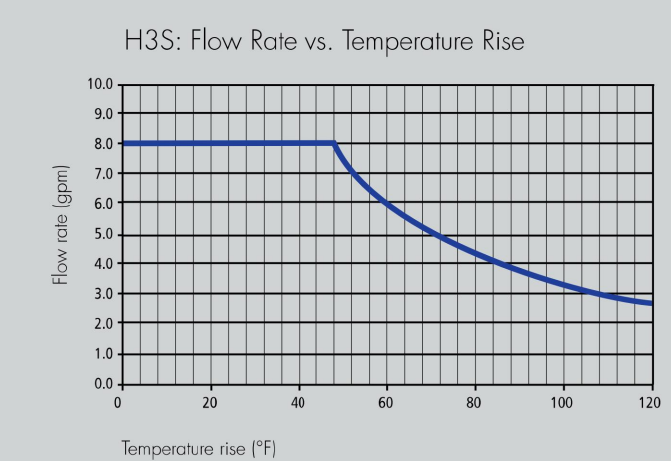
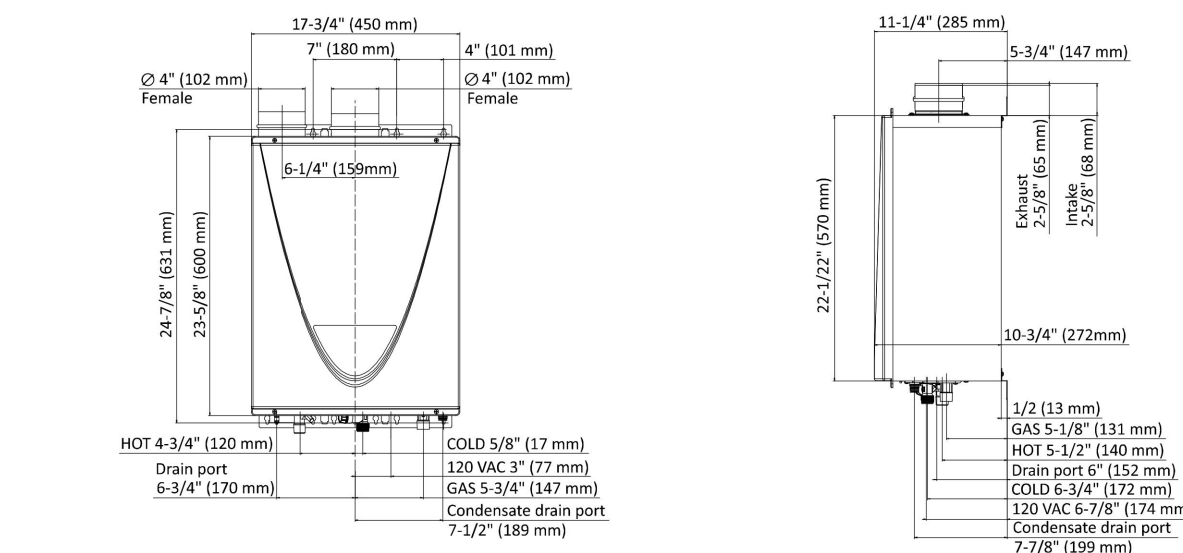
**Indoor and Outdoor Installation Options**  
**Power Vent or Power Direct Vent Design**  
**Ultra-Low NOx Emissions**

**Flow Rate up to 8 GPM**  
 • Values based on factory testing. 0.4 GPM required for continuous fire after initial ignition  
**Water Pressure: 15-150 psi**  
 • Pressure Only Relief Valve Requires (Min 180,000 btu/h, 150 psi).  
 • 40 psi or above recommended for max. flow

**Warranty**

- 15-year limited warranty on heat exchanger in residential applications.
- 5-year limited warranty on heat exchanger in commercial applications.
- 5-year warranty on all parts.
- Refer to takagi.com for further warranty details

**Dimensions**



34

**H3 SERIES**

Utilizing commercial grade copper alloy for the heat exchanger tubing, the H3 is suitable for heavier residential uses such as combination space heating and domestic recirculation systems. Indoor models have an integrated temperature controller and outdoor models include a remote control as a standard feature. Indoor models are certified up to 10,100 ft. altitude. Complies with Ultra-Low NOx regulations.



**Specifications**

| Model Number* | Type    | Gas Consumption Input |                 | Inlet Gas Pressure** |                    | UEF  |
|---------------|---------|-----------------------|-----------------|----------------------|--------------------|------|
|               |         | Minimum (BTU/H)       | Maximum (BTU/H) | Minimum (in. W.C.)   | Maximum (in. W.C.) |      |
| T-H3-DV-N     | Natural | 15,000                | 199,000         | 4.0                  | 10.5               | 0.93 |
| T-H3-OS-N     | Natural | 15,000                | 199,000         | 4.0                  | 10.5               | 0.95 |

| Model Number* | Maximum GPM | Hot/Cold Connections | Gas Connection | Clearances (in.) |        |      |       | Approx Shipping Weight (lbs) |
|---------------|-------------|----------------------|----------------|------------------|--------|------|-------|------------------------------|
|               |             |                      |                | Top              | Bottom | Side | Front |                              |
| T-H3-DV-N     | 10          | 3/4" NPT             | 3/4" NPT       | 12               | 12     | 3    | 4     | 71                           |
| T-H3-OS-N     | 10          | 3/4" NPT             | 3/4" NPT       | 36               | 12     | 3    | 24    | 69                           |

**H3 Temperature Settings**

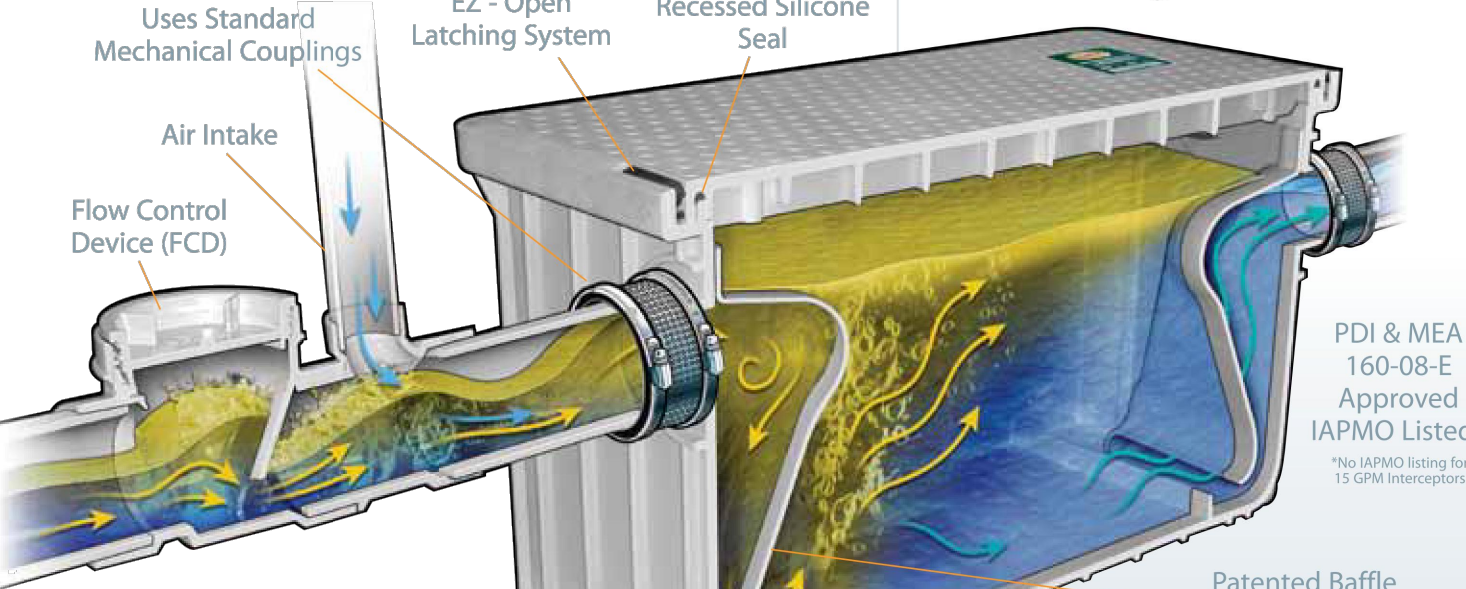
With 100209924 remote (max. distance 400' from heater, non-polarized 20 gauge wiring.)  
 100°F to 160°F with 5°F intervals (13 options), 120°F Default Factory Setting

**Electric**

|       |                          |                         |                                     |
|-------|--------------------------|-------------------------|-------------------------------------|
| 120 V | 89 W / 0.74 A (Standard) | 4 W / 0.04 A (Standard) | 175 W / 1.5 A (Pressure Protection) |
|-------|--------------------------|-------------------------|-------------------------------------|



**ENDURA® GREASE MANAGEMENT**



**Injected molded in engineered thermoplastics, Endura® will not corrode, chip or peel, even under the most severe applications**

Sewer authorities and building owners spend millions of dollars every year combating grease accumulation in plumbing systems. Grease accumulation causes sewer blockages and overflows. These overflows are a health risk to you, your employees, your customers and the general public. Injection molded in engineered thermoplastic, the Endura® Grease Interceptor provides restaurant operators the best value and performance on the market today.

- Compact, durable, user-friendly solution
- Molded one piece tank eliminates seams and potential leaking
- Can withstand continuous discharge at 104° C (220° F)
- Lightweight and strong, Endura® models weigh up to 60% less than directly equivalent metal competitors - offers ease of installation, transport and storage
- Endura® supports 440 pounds of pedestrian and light duty traffic
- Connected using mechanical joint couplings allowing for use of various piping materials
- Flexibility of installation - can be installed in-floor, on-floor, or semi-recessed



**ENDURA® Grease Interceptor**

Contractor shall install a Canplas Endura® Grease Interceptor, Part No. \_\_\_\_\_ (fill in). A flow control with a rate of \_\_\_\_\_ gpm will also be installed in accordance to manufacturer's instructions. The unit shall be comprised of engineered thermoplastics to withstand operational temperatures up to 220°F (104°C) and incorporate a lid with the capability of supporting 440 lbs. (200 Kgs). The unit will be supported by a 10 year manufacturer's extended warranty. The grease interceptor shall be certified to the current version of the PDI-G101 standard and where locally applicable to ASME 112.14.3 or have UPC listing. Contractor shall provide mechanical connectors to connect the grease interceptor.

**TANK DIMENSIONS**

| GPM/lbs | 15/30         | 20/40         | 25/50 LO      | 25/50         | 35/70         | 50/100           |
|---------|---------------|---------------|---------------|---------------|---------------|------------------|
| A       | 14.5" (368mm) | 23.6" (600mm) | 31.0" (787mm) | 31.0" (787mm) | 31.0" (787mm) | 31.0" (787mm)    |
| B       | 17.5" (444mm) | 17.5" (444mm) | 23.5" (597mm) | 23.5" (597mm) | 23.5" (597mm) | 23.5" (597mm)    |
| C       | 3.5" (89mm)   | 3.5" (89mm)   | 4" (102mm)    | 5.0" (127mm)  | 5.0" (127mm)  | 5.0" (127mm)     |
| D       | 12.8" (325mm) | 12.8" (325mm) | 7" (178mm)    | 12.5" (318mm) | 12.5" (318mm) | 18.5" (469.9 mm) |
| E       | 16.3" (414mm) | 16.3" (414mm) | 11" (279mm)   | 17.5" (444mm) | 17.5" (444mm) | 23.5" (596.9 mm) |

**FLOW CONTROL DIMENSIONS**

| NOM. Pipe Size | Compact        | 2" h x h       | 3" h x h        | 4" h x h        |
|----------------|----------------|----------------|-----------------|-----------------|
| A              | 3.04" (76.2mm) | 3" (76.2mm)    | 4.23" (107.4mm) | 6.13" (155.7mm) |
| B              | 3.44" (87.4mm) | 3.84" (97.5mm) | 5.97" (151mm)   | 6.84" (173.7mm) |
| C              | -              | -              | -               | -               |

**AIR INTAKE DIMENSIONS**

| 3" spg x h     | 4" spg x h     |
|----------------|----------------|
| 2.67" (67.8mm) | 3.19" (81mm)   |
| 3.44" (87.4mm) | 4.84" (123mm)  |
| 2.27" (57.7mm) | 2.72" (69.1mm) |

**CAPACITIES**

| Part Number                             | 3907A02             | 3910A02             | 3915A02C            | 3920A02           | 3925A02LO          | 3925ALTR2 (2")     | 3925ALTR3 (3")     | 3935A03 (3")       | 3950A03 (3")       |
|---|---------------------|---------------------|---------------------|-------------------|--------------------|--------------------|--------------------|--------------------|--------------------|
| US Gallons Per Minute - GPM (L/Sec)     | 7 (0.44)            | 10 (0.63)           | 15 (0.94)           | 20 (1.26)         | 25 (1.6)           | 25 (1.6)           | 35 (2.2)           | 50 (3.2)           | 50 (3.2)           |
| Grease Capacity Min - lb (kg)           | 14 (6.35)           | 20 (9.07)           | 30 (13.6)           | 40 (18.1)         | 50 (22.68)         | 50 (22.68)         | 70 (31.8)          | 100 (45.4)         | 100 (45.4)         |
| Average Efficiency % (ASME A112.14.3)   | 95.5%               | 92.5%               | 92.0%               | 95.4%             | 97.1%              | 98%                | 98.6%              | 98.6%              | 93.9%              |
| Grease Capacity Actual - lb (kg)        | 31.95 (14.49)       | 38.07 (17.28)       | 48.97 (22.22)       | 76.4 (34.65)      | 53.4 (24.22)       | *56.25 (25.51)     | 138.5 (62.8)       | *122.07 (55.3)     |                    |
| Operating Temperature Capabilities      | 220°F (104°C)       | 220°F (104°C)       | 220°F (104°C)       | 220°F (104°C)     | 220°F (104°C)      | 220°F (104°C)      | 220°F (104°C)      | 220°F (104°C)      | 220°F (104°C)      |
| Surface Load Capacity                   | 440 lb (200 kg)     | 440 lb (200 kg)     | 440 lb (200 kg)     | 440 lb (200 kg)   | 440 lb (200 kg)    | 440 lb (200 kg)    | 440 lb (200 kg)    | 440 lb (200 kg)    | 440 lb (200 kg)    |
| Unit Weight (Empty)                     | 15.8 lb (7.17 kg)   | 15.8 lb (7.17 kg)   | 15.8 lb (7.17 kg)   | 23 lb (10.4 kg)   | 23.9 lb (10.85 kg) | 45 lb (20.4 kg)    | 45 lb (20.4 kg)    | 60 lb (27.2 kg)    | 60 lb (27.2 kg)    |
| Liquid Capacity                         | 12.96 gal (49.04 L) | 12.96 gal (49.04 L) | 12.96 gal (49.04 L) | 21.4 gal (81.4 L) | 18.9 gal (71.54 L) | 39.4 gal (149.1 L) | 39.4 gal (149.1 L) | 52.0 gal (197.5 L) | 52.0 gal (197.5 L) |
| Connection size (mechanical joint only) | 2"                  | 2"                  | 2"                  | 2"                | 2"                 | 2" (3925ALTR2)     | 3" (3925ALTR3)     | 3" (3935A03)       | 4" (3950A03)       |

\* Not evaluated to breakdown capacity (PDI-G101)  
**Grease Capacity Min - lb (kg):** Industry minimum grease capacity based on GPM flow rate. Requires minimum 2 lb of grease capacity for each GPM of flow.  
**Grease Capacity Actual - lb (kg):** Actual capacity at breakdown when tested to ASME A112.14.3

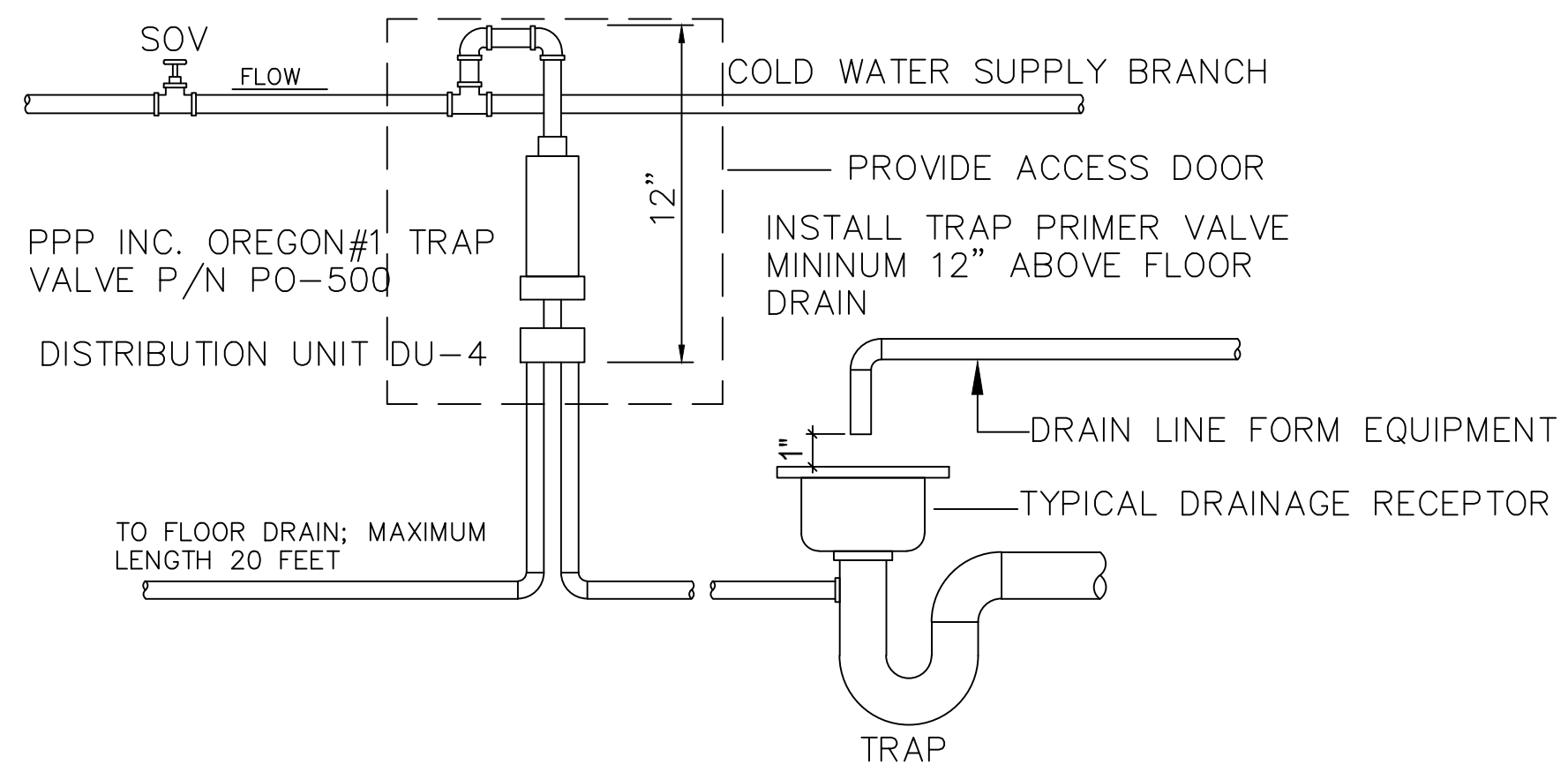


**TANKLESS WATER HEATER SPECIFICATION**

SCALE NONE

**GREASE TRAP SPECIFICATION**

SCALE NONE

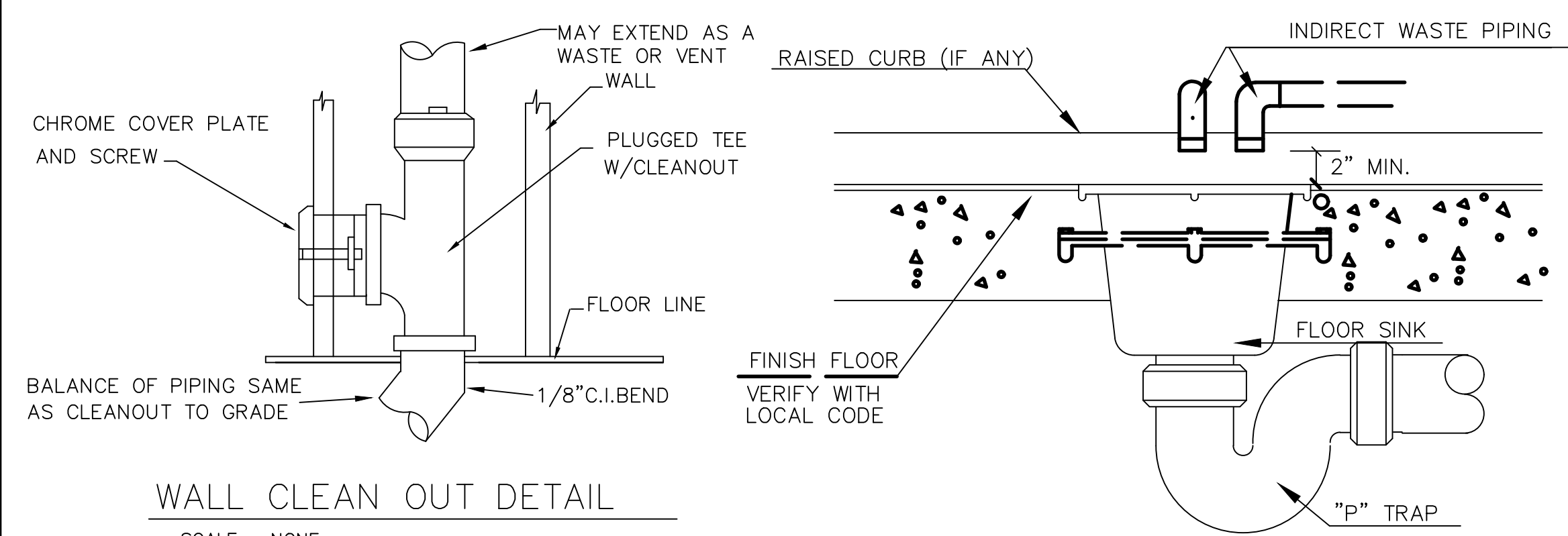


**TRAP PRIMER INSTALLATION**

SCALE NONE

**TRAP INSTALLATION DETAIL**

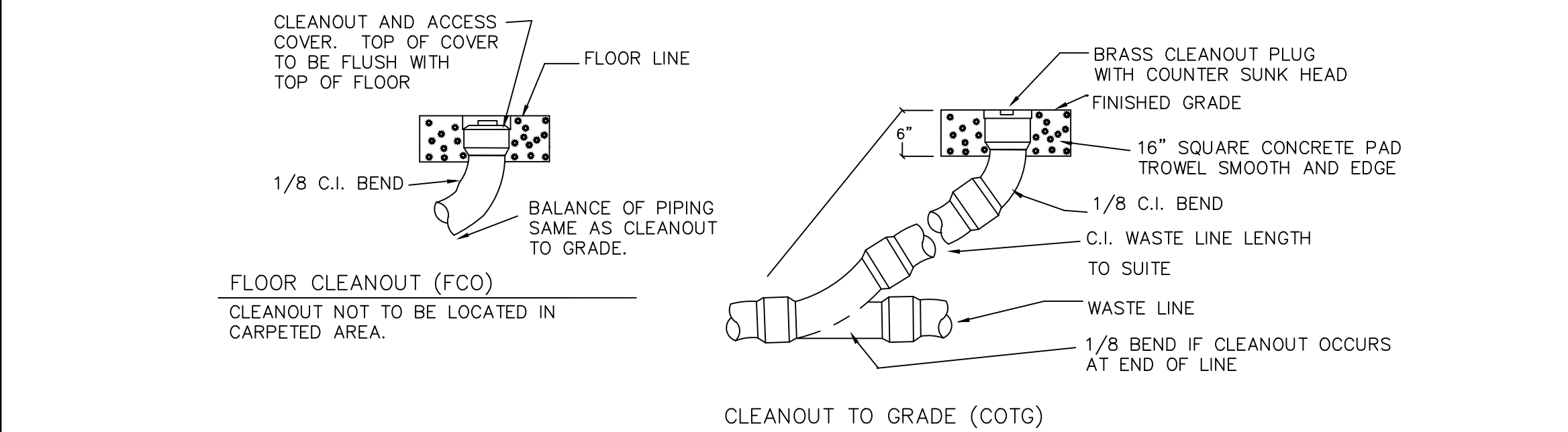
SCALE NONE



**WALL CLEANOUT DETAIL**

**INDIRECT WATSE DETAIL**

SCALE NONE

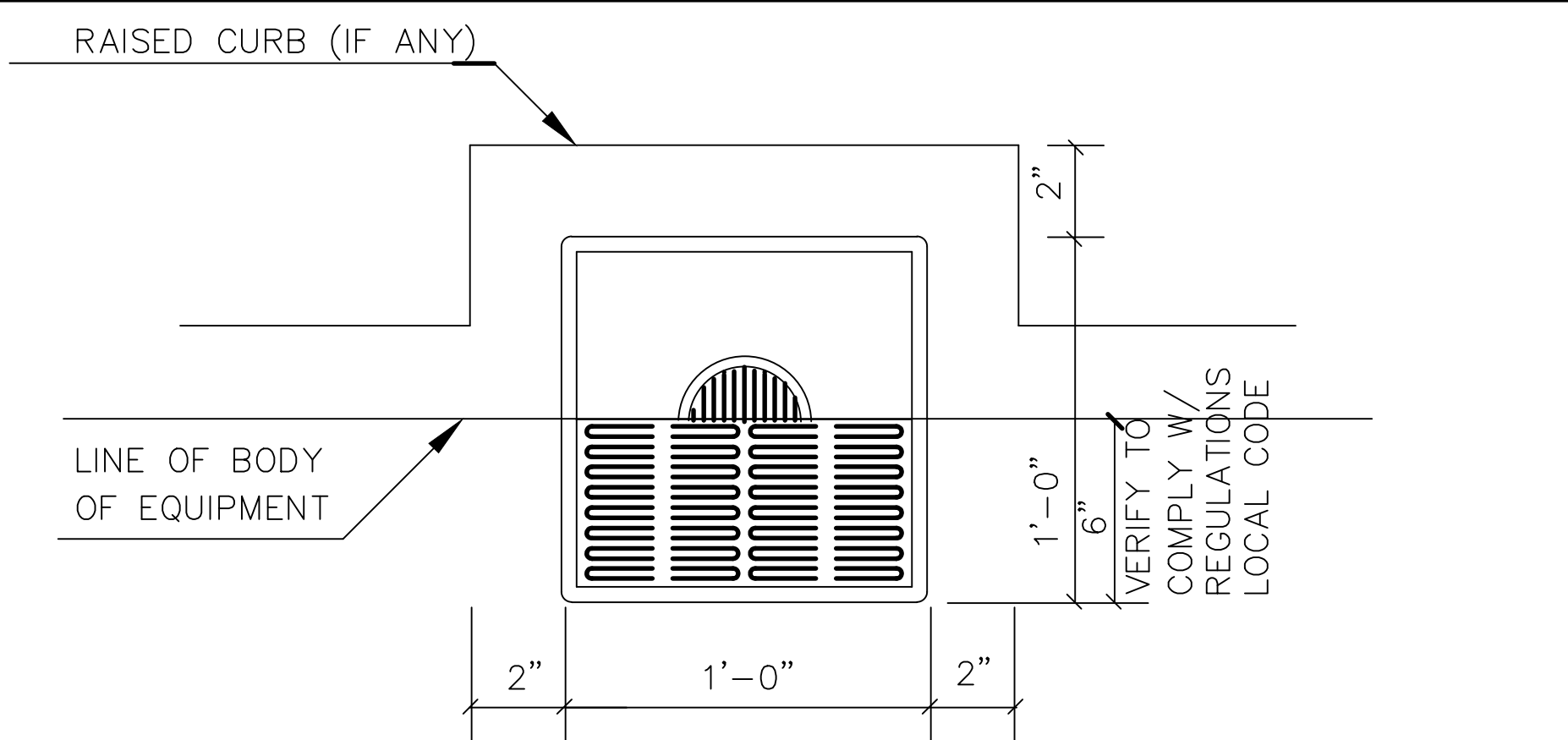


**CLEANOUT DETAIL**

SCALE NONE

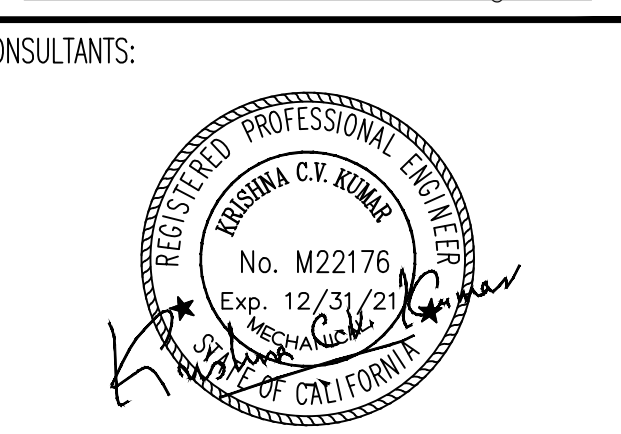
**FLOOR CLEANOUT INSTALLATION DETAIL**

SCALE NONE



**FLOOR SINK INSTALLATION DETAIL**

SCALE NONE



PRINTED DATE: 12-13-2021  
 DRAWN BY: R.T.E.  
 CHECKED BY: R.T.E.  
 PROJECT NO.: EMA-34-21

CLIENT: **DIAMOND AUTOMOTIVE CAFE**  
 PROJECT NAME & ADDRESS: **55761 TWENTYNINE PALMS HWY YUCCA VALLEY, CA 92284**

**APPROVALS**

| APPROVED BY         | INITIALS | DATE              |
|---------------------|----------|-------------------|
| ISSUED FOR PLAN CHK | R.T.E.   | DECEMBER 13, 2021 |

**SHEET TITLE**  
 PLUMBING DETAILS AND WATER HEATER SPECIFICATION

**SHEET NUMBER**

**P-5**

CONDENSING

35



STATE OF CALIFORNIA  
**Domestic Water Heating System**  
 NRCC-PLB-E (Created 11/19) CALIFORNIA ENERGY COMMISSION

CERTIFICATE OF COMPLIANCE  
 This document is used to demonstrate compliance for nonresidential occupancies with requirements in §110.1, §110.3, §120.3, and §140.5, and with requirements in §141.0 for additions and alterations, for domestic water heating systems using the prescriptive path. For high-rise residential and hotel/motel occupancies, compliance is demonstrated with requirements in §110.1, §110.3, §120.3, §150.0, and §150.1(c)(8), and with requirements in §150.2 for additions and alterations.

Project Name: DIAMOND AUTOMOTIVE CAFE Report Page: Page 1 of 5  
 Project Address: 55761 TWENTY NINE PALMS HWY, YUCCA VALLEY TREE, 92284 Date Prepared: DECEMBER 10, 2021

**A. GENERAL INFORMATION**  
 01 Project Location (city) YUCCA VALLEY 02 Climate Zone 4  
 03 Occupancy Types Within Project (select all that apply):  
 Nonresidential  High-Rise Residential  Hotel/ Motel  
 State Building  Healthcare Facility  Other (Write In): CAFE

**B. PROJECT SCOPE**  
 Table Instructions: Include any domestic water heating systems that are within the scope of the permit application and are demonstrating compliance using the prescriptive paths outlined in §140.5, §150.1(c)(8), and §141.0(a), or §141.0(b)(2) for additions or alterations. Solar water heating systems should be documented on the NRCC-SRA compliance document. Combined hydronic water heating systems should be documented on the NRCC-MCH compliance document.

01 02 03  
 My project consists of (check all that apply): System Type:<sup>1,2</sup> System Components  
 New System (DHW system being installed for the first time in newly constructed building) Individual System (serving nonresidential spaces)<sup>1</sup>  Equipment  Distribution  Controls  
 System Alteration (equipment, distribution or controls)  Equipment  Distribution  Controls

<sup>1</sup> FOOTNOTE: Point of use water heaters, or other non-central systems used to serve nonresidential spaces, are considered individual systems.  
<sup>2</sup> Dwelling units refers to hotel/ motel guest rooms and units in a high-rise residential occupancy.

**C. COMPLIANCE RESULTS**  
 Table Instructions: Table C will indicate if the project data input into the compliance document is compliant with water heating requirements. This table is not editable by the user. If this table says "DOES NOT COMPLY" or "COMPLIES with Exceptional Conditions" refer to Table D, or the table indicated as not compliant for guidance.

| 01  | 02                                    | 03                        | 04                 |
|---|---------------------------------------|---------------------------|--------------------|
| Domestic Hot Water Equipment<br>(See Table F) | Distribution Systems<br>(See Table G) | Controls<br>(See Table H) | Compliance Results |
| Yes   | Yes                                   | Yes                       | <b>COMPLIES</b>    |

CA Building Energy Efficiency Standards - 2019 Nonresidential Compliance: <http://www.energy.ca.gov/title24/2019standards> November 2019

STATE OF CALIFORNIA  
**Domestic Water Heating System**  
 NRCC-PLB-E (Created 11/19) CALIFORNIA ENERGY COMMISSION

CERTIFICATE OF COMPLIANCE  
 Project Name: DIAMOND AUTOMOTIVE CAFE Report Page: Page 2 of 5  
 Project Address: 55761 TWENTY NINE PALMS HWY, YUCCA VALLEY TREE, 92284 Date Prepared: DECEMBER 10, 2021

**D. EXCEPTIONAL CONDITIONS**  
 This table is auto-filled with uneditable comments because of selections made or data entered in tables throughout the form.  
 No exceptional conditions apply to this project.

**E. ADDITIONAL REMARKS**  
 This table includes remarks made by the permit applicant to the Authority Having Jurisdiction.  
 GAS TANKLESS WATER HEATER.

**F. DOMESTIC HOT WATER EQUIPMENT**  
 Table Instructions: Complete the following table to demonstrate compliance with mandatory equipment requirements in §110.1 and §110.3. For high-rise residential and hotel/motel occupancies, compliance with prescriptive requirements in §150.1(c)(8) must also be demonstrated and with §150.2 for addition and alteration scopes.

| 01               | 02  | 03           | 04                               | 05                                | 06   |
|------------------|---|--------------|----------------------------------|-----------------------------------|--|
| Name or Item Tag | Equipment Type                                | Volume (gal) | Max GPM/ First Hour Rating (FHR) | Rated Uniform Energy Factor (UEF) | Minimum Required Uniform Energy Factor (UEF) |
| WH-1             | Gas-Fired Instantaneous (50,000-200,000 BTUH) | ≤2           | GPM ≥ 4.0                        | 0.93                              | 0.81   |
| WH-2             | Gas-Fired Instantaneous (50,000-200,000 BTUH) | ≤2           | GPM ≥ 4.0                        | 0.93                              | 0.81   |

<sup>1</sup> FOOTNOTE: Compliant equipment may be found in the Modernized Appliance Efficiency Database System (MAEDBS) on the Energy Commission website: <https://caertappliances.energy.ca.gov/Pages/Search/AdvancedSearch.aspx>

**Water Heating Equipment All Occupancies**

| Yes                                 | No                       | Not Applicable                      | Requirement   |
|-------------------------------------|--------------------------|-------------------------------------|---|
| <input type="checkbox"/>            | <input type="checkbox"/> | <input checked="" type="checkbox"/> | Unfired storage tank insulation shall have internal + External ≥ R-16 OR External ≥ R-12. Label required per §110.3(c)(3) |
| <input type="checkbox"/>            | <input type="checkbox"/> | <input checked="" type="checkbox"/> | New state buildings 60% of energy for service water heating from site solar energy or recovered energy per §110.3(c)(5)   |
| <input checked="" type="checkbox"/> | <input type="checkbox"/> | <input type="checkbox"/>            | Isolation valves for instantaneous water heater with input rating > 6.8 kBTUH or 2 kW has been specified per §110.3(c)(6) |

**G. DOMESTIC HOT WATER DISTRIBUTION SYSTEM**

CA Building Energy Efficiency Standards - 2019 Nonresidential Compliance: <http://www.energy.ca.gov/title24/2019standards> November 2019

STATE OF CALIFORNIA  
**Domestic Water Heating System**  
 NRCC-PLB-E (Created 11/19) CALIFORNIA ENERGY COMMISSION

CERTIFICATE OF COMPLIANCE  
 Project Name: DIAMOND AUTOMOTIVE CAFE Report Page: Page 3 of 5  
 Project Address: 55761 TWENTY NINE PALMS HWY, YUCCA VALLEY TREE, 92284 Date Prepared: DECEMBER 10, 2021

Table Instructions: Complete the following table to demonstrate compliance for nonresidential occupancies with distribution requirements in §120.3 and §140.5. For high-rise residential and hotel/motel occupancies, compliance is demonstrated with requirements in §110.3(c), §120.3, §150.0, §150.1, and §150.1(c)(8).

**Mandatory Pipe Insulation All Occupancies**

| Item | Requirement   |
|------|---|
| 12   | For systems serving nonresidential spaces, pipe insulation for the following applications is specified to comply with Table 120.3-A (see below) per §120.3:<br>- Recirculating system piping, including supply and return piping of the water heater<br>- The first 8 ft of hot and cold outlet piping for a nonrecirculating storage system<br>- Pipes that are externally heated<br>Insulation shall be protected from damage, including that due to sunlight, moisture, equipment maintenance, and wind. Insulation exposed to weather shall be installed with a cover suitable for outdoor service per §120.3(b) and §150.0(c)(3) |
| 13   | Insulation shall be protected from damage, including that due to sunlight, moisture, equipment maintenance, and wind. Insulation exposed to weather shall be installed with a cover suitable for outdoor service per §120.3(b) and §150.0(c)(3)   |

**TABLE 120.3-A PIPE INSULATION THICKNESS**

| Fluid Temperature Range (°F) | Conductivity Range (Btu-in per hour per ft² per °F) | Insulation Mean Rating Temp (°F) | Nominal Pipe Diameter (in) |                  |                |
|------------------------------|---|----------------------------------|----------------------------|------------------|----------------|
|                              |   |                                  | <1                         | 1 to < 1.5       | 1.5 to < 4     |
| 105-140                      | 0.22-0.28   | 100                              | 1.0 in or R-7.7            | 1.5 in or R-12.5 | 1.5 in or R-11 |

**H. DOMESTIC HOT WATER SYSTEM CONTROLS**  
 Table Instructions: Complete the following table to demonstrate compliance with controls requirements in §110.3 for all occupancies. For high-rise residential and hotel/motel occupancies, compliance is demonstrated with requirements in §150.1(c)(8).

| Item | Yes                                 | No                       | Not Applicable                      | Requirement   |
|------|-------------------------------------|--------------------------|-------------------------------------|---|
| 01   | <input checked="" type="checkbox"/> | <input type="checkbox"/> | <input type="checkbox"/>            | Construction documents require manufacturer certification that service water-heating systems are equipped with automatic temperature controls capable of adjusting temperature settings per §110.3(a) |
| 02   | <input checked="" type="checkbox"/> | <input type="checkbox"/> | <input type="checkbox"/>            | Systems with capacity > 167,000 BTUH equipped with outlet temperature controls per §110.3(c)(1) unless covered by California Plumbing Code Section 613.0.   |
| 03   | <input checked="" type="checkbox"/> | <input type="checkbox"/> | <input type="checkbox"/>            | Controls for circulating pumps or electrical heat trace systems are capable of automatically turning off the system per §110.3(c)(2) unless system serves healthcare facility.                        |
| 04   | <input type="checkbox"/>            | <input type="checkbox"/> | <input checked="" type="checkbox"/> | For recirculation systems serving multiple dwelling units, design includes automatic pump controls per §150.1(c)(8)(ii) or §150.2 for additions or alterations  |
| 05   | <input type="checkbox"/>            | <input type="checkbox"/> | <input checked="" type="checkbox"/> | For recirculation systems serving individual dwelling units, design includes manual on/off controls as specified in Reference Appendix RA 4.4.9 per §150.1(c)(8)                                      |

Table Continued

CA Building Energy Efficiency Standards - 2019 Nonresidential Compliance: <http://www.energy.ca.gov/title24/2019standards> November 2019

STATE OF CALIFORNIA  
**Domestic Water Heating System**  
 NRCC-PLB-E (Created 11/19) CALIFORNIA ENERGY COMMISSION

CERTIFICATE OF COMPLIANCE  
 Project Name: DIAMOND AUTOMOTIVE CAFE Report Page: Page 4 of 5  
 Project Address: 55761 TWENTY NINE PALMS HWY, YUCCA VALLEY TREE, 92284 Date Prepared: DECEMBER 10, 2021

Table Continued

| Item | Yes                      | No                       | Not Applicable                      | Requirement  |
|------|--------------------------|--------------------------|-------------------------------------|--|
| 06   | <input type="checkbox"/> | <input type="checkbox"/> | <input checked="" type="checkbox"/> | For replacement single heat pump water heaters serving individual dwelling units in climate zones 1-15, design includes communication interface that meets demand responsive control requirements of §110.12(a) per §150.2(b)(1)(iii). |

**I. DECLARATION OF REQUIRED CERTIFICATES OF INSTALLATION**  
 Table Instructions: Selections have been made based on information provided in previous tables of this document. If any selection needs to be changed, please explain why in Table E. Additional Remarks. These documents must be provided to the building inspector during construction and can be found online at [https://www.energy.ca.gov/title24/2019standards/2019\\_compliance\\_documents/Nonresidential\\_Documents/NRCL/](https://www.energy.ca.gov/title24/2019standards/2019_compliance_documents/Nonresidential_Documents/NRCL/)

| YES                                 | NO                                  | Form/Title  | Field Inspector Pass     | Field Inspector Fail     |
|-------------------------------------|-------------------------------------|---|--------------------------|--------------------------|
| <input checked="" type="checkbox"/> | <input type="checkbox"/>            | NRCL-PLB-01-E - Must be submitted for all buildings   | <input type="checkbox"/> | <input type="checkbox"/> |
| <input type="checkbox"/>            | <input checked="" type="checkbox"/> | NRCL-PLB-02-E - Must be submitted for high-rise residential and hotel/ motel central hot water distribution systems to be recognized for compliance.              | <input type="checkbox"/> | <input type="checkbox"/> |
| <input type="checkbox"/>            | <input checked="" type="checkbox"/> | NRCL-PLB-03-E - Must be submitted for high-rise residential and hotel/ motel single dwelling unit hot water distribution systems to be recognized for compliance. | <input type="checkbox"/> | <input type="checkbox"/> |

**J. DECLARATION OF REQUIRED CERTIFICATES OF ACCEPTANCE**  
 There are no Certificates of Acceptance applicable to service water heating requirements.

**K. DECLARATION OF REQUIRED CERTIFICATES OF VERIFICATION**  
 Table Instructions: Selections have been made based on information provided in previous tables of this document. If any selection needs to be changed, please explain why in Table E. Additional Remarks. These documents must be completed by a HERS Rater and provided to the building inspector during construction. The final documents must be created by a HERS Providers registry, but drafts can be found online at [https://www.energy.ca.gov/title24/2019standards/2019\\_compliance\\_documents/Nonresidential\\_Documents/NRCV/](https://www.energy.ca.gov/title24/2019standards/2019_compliance_documents/Nonresidential_Documents/NRCV/)

| YES                      | NO                                  | Form/Title  | Field Inspector Pass     | Field Inspector Fail     |
|--------------------------|-------------------------------------|---|--------------------------|--------------------------|
| <input type="checkbox"/> | <input checked="" type="checkbox"/> | NRCV-PLB-21-H High-rise Residential Central Hot Water Distribution HERS Verification                  | <input type="checkbox"/> | <input type="checkbox"/> |
| <input type="checkbox"/> | <input checked="" type="checkbox"/> | NRCV-PLB-22-H High-rise Residential Individual Dwelling Unit Hot Water Distribution HERS Verification | <input type="checkbox"/> | <input type="checkbox"/> |

CA Building Energy Efficiency Standards - 2019 Nonresidential Compliance: <http://www.energy.ca.gov/title24/2019standards> November 2019

STATE OF CALIFORNIA  
**Domestic Water Heating System**  
 NRCC-PLB-E (Created 11/19) CALIFORNIA ENERGY COMMISSION

CERTIFICATE OF COMPLIANCE  
 Project Name: DIAMOND AUTOMOTIVE CAFE Report Page: Page 5 of 5  
 Project Address: 55761 TWENTY NINE PALMS HWY, YUCCA VALLEY TREE, 92284 Date Prepared: DECEMBER 10, 2021

**DOCUMENTATION AUTHOR'S DECLARATION STATEMENT**  
 I certify that this Certificate of Compliance documentation is accurate and complete

Documentation Author Name: Documentation Author Signature: Rasoul J. Emrani  
 Company: Signature Date: DECEMBER 10, 2021  
 Address: CEA/ HERS Certification Identification (if applicable):  
 City/State/Zip: Phone: 805-371-7460

**RESPONSIBLE PERSON'S DECLARATION STATEMENT**  
 I certify the following under penalty of perjury, under the laws of the State of California:  
 1. The information provided on this Certificate of Compliance is true and correct.  
 2. I am eligible under Division 3 of the Business and Professions Code to accept responsibility for the building design or system design identified on this Certificate of Compliance (responsible designer)  
 3. The energy features and performance specifications, materials, components, and manufactured devices for the building design or system design identified on this Certificate of Compliance conform to the requirements of Title 24, Part 1 and Part 6 of the California Code of Regulations.  
 4. The building design features or system design features identified on this Certificate of Compliance are consistent with the information provided on other applicable compliance documents, worksheets, calculations, plans and specifications submitted to the enforcement agency for approval with this building permit application.  
 5. I will ensure that a completed signed copy of this Certificate of Compliance shall be made available with the building permit(s) issued for the building, and made available to the enforcement agency for all applicable inspections. I understand that a completed signed copy of this Certificate of Compliance is required to be provided with the documentation the builder provides to the building owner at occupancy.

Responsible Designer Name: Responsible Designer Signature: Rasoul J. Emrani  
 Company: Date Signed: DECEMBER 10, 2021  
 Address: License: M-22176  
 City/State/Zip: Phone: 805-371-7460

CA Building Energy Efficiency Standards - 2019 Nonresidential Compliance: <http://www.energy.ca.gov/title24/2019standards> November 2019



CONSULTANTS:  
 PRINTED DATE: 12-13-2021  
 DRAWN BY: R.T.E.  
 CHECKED BY: R.T.E.  
 PROJECT NO.: EMA-34-21

CLIENT:  
**DIAMOND AUTOMOTIVE CAFE**  
 PROJECT NAME & ADDRESS:  
 55761 TWENTYNINE PALMS HWY  
 YUCCA VALLEY, CA 92284

APPROVALS

| APPROVED BY         | INITIALS | DATE              |
|---------------------|----------|-------------------|
| ISSUED FOR PLAN CHK | R.T.E.   | DECEMBER 13, 2021 |

SHEET TITLE  
**PLUMBING TITLE-24 COMPLIANCE FORMS**

SHEET NUMBER  
**PT-24**