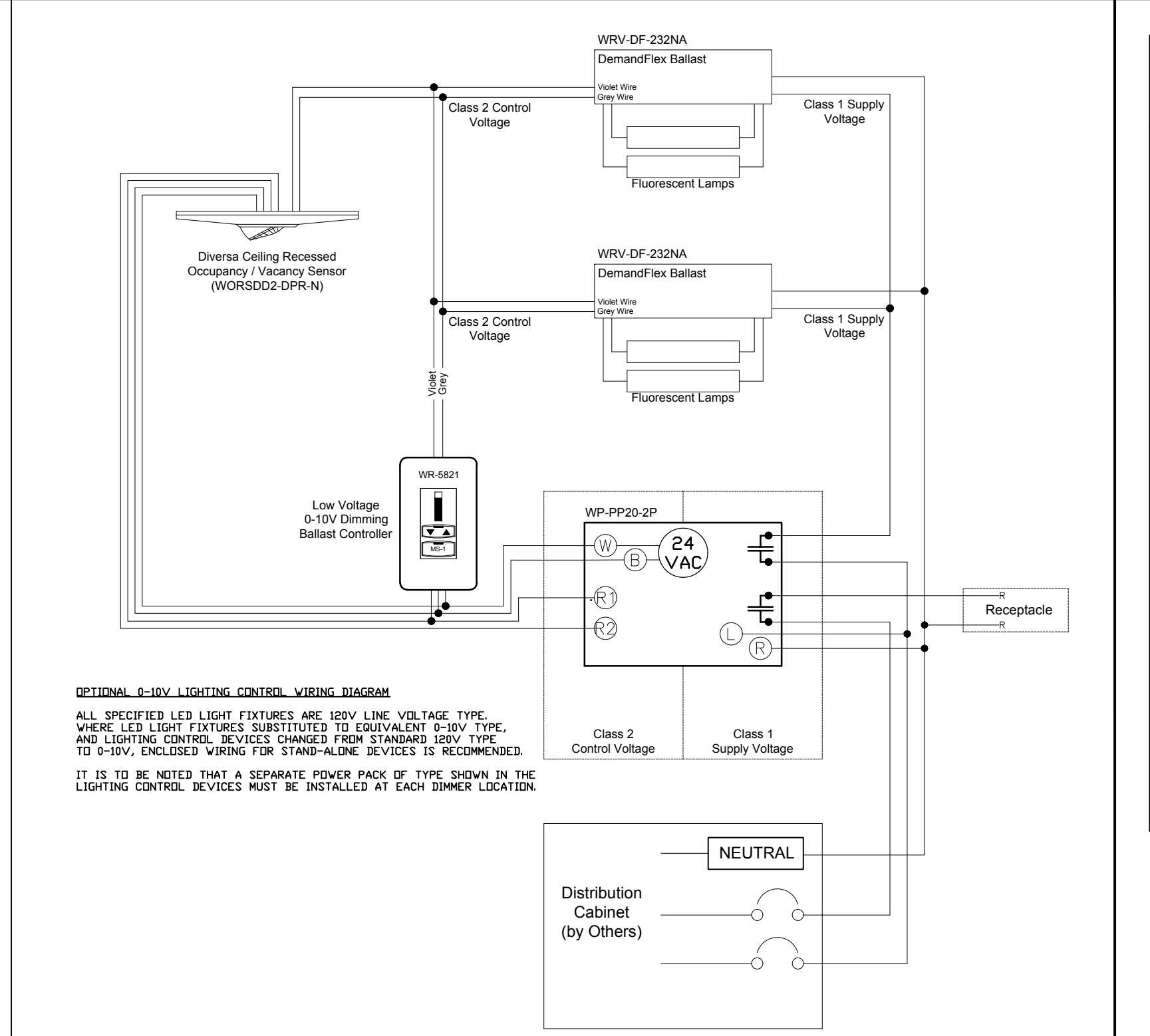
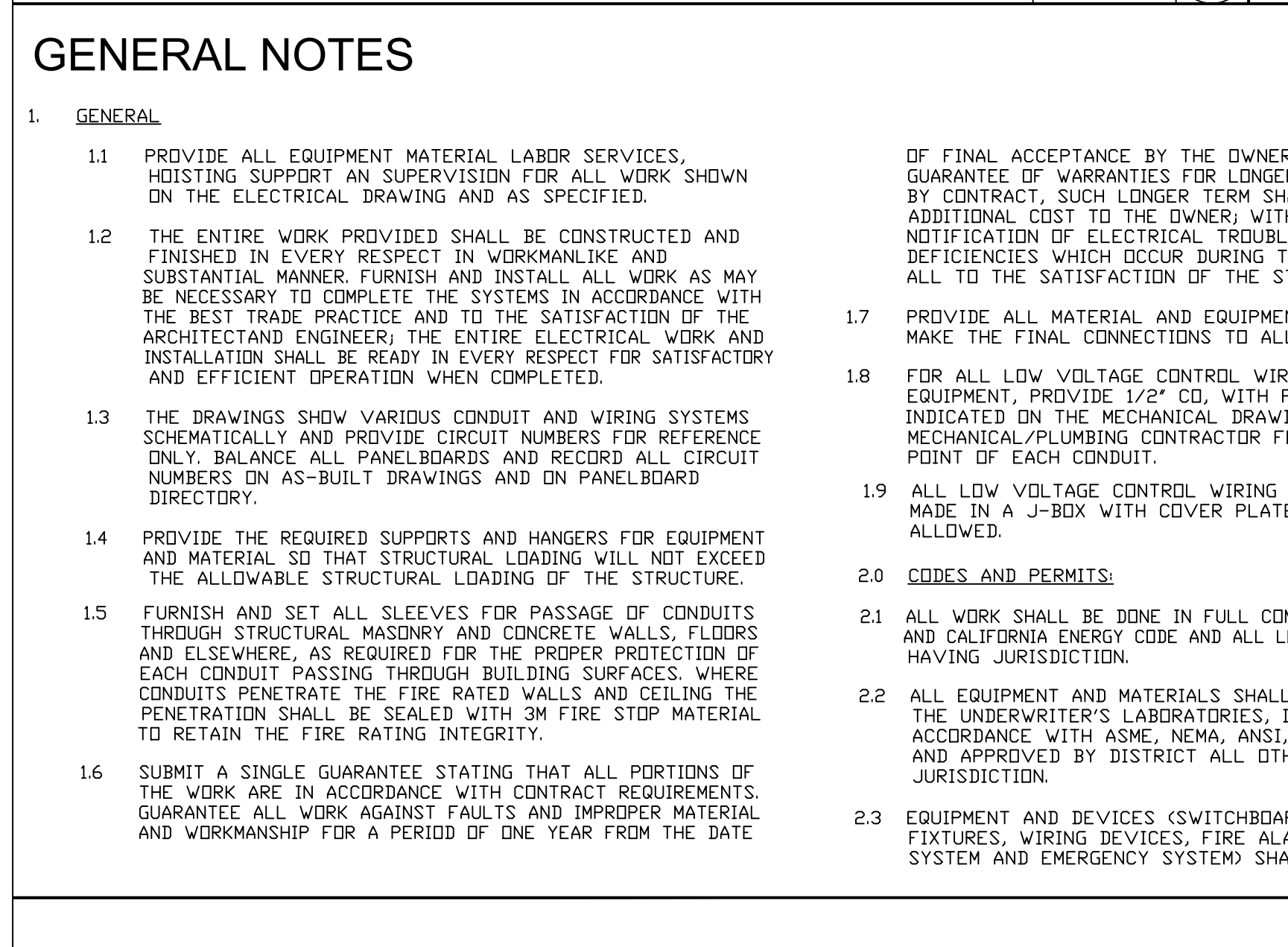


| ELECTRICAL SYMBOL LIST |       |      |   |
|------------------------|-------|------|---|
| CEILING                | FLOOR | WALL | DESCRIPTION   |
| ○                      |       |      | CEILING MOUNTED OR (WALL) MOUNTED FIXTURE TYPE AS SHOWN ON LIGHT FIXTURE SCHEDULE, CONTROLLED BY SWITCH OR DIMMER "o"<br>DARKENED = EMERGENCY POWER (90 MIN. BATTERY)<br>N = NIGHT LIGHT<br>C = CLEANING LIGHT        |
| △                      |       |      | ACCENT OR WALL WASHER FIXTURE-TYPE AS SHOWN ON LIGHT FIXTURE SCHEDULE CONTROLLED BY SWITCH OR DIMMER "o"  |
| □                      |       |      | CEILING (WALL) MOUNTED FIXTURE WITH LENS, TYPE AS SHOWN ON LIGHT FIXTURE SCHEDULE<br>DARKENED = EMERGENCY POWER (90 MIN. BATTERY)<br>N = NIGHT LIGHT<br>C = CLEANING LIGHT  |
| — —                    |       |      | STRIP LIGHT FIXTURE, TYPE AS SHOWN ON LIGHT FIXTURE SCHEDULE.   |
| ↑                      |       |      | CEILING (WALL) MOUNTED EXIT LIGHT - TYPE "X" - DIRECTIONAL ARROWS WHERE INDICATED - SHADED AREAS INDICATE ILLUMINATED FACE/FACES, WITH SELF CONTAINED 90 MIN. BATTERY & CHARGER.                                      |
| ⊕                      |       |      | SINGLE POLE SWITCH MOUNTED AT 48" AFF (U.D.N.)<br>3 = THREE - WAY<br>o = CONTROLLING OUTLET "o"<br>TD = THERMAL OVERLOAD  |
| ⊕                      |       |      | KEY PAD DIMMER WITH INTEGRAL MOTION SENSOR SWITCH CONTROL @ 48" AFF.  |
| ⊕                      |       |      | THREE WAY STAND ALONE DIMMER SWITCH, MOUNTED AT 48" AFF.  |
| ⊕                      |       |      | SINGLE ZONE MANUAL DIMMER, LINE VOLTAGE DR 0-10V.   |
| ⊕                      |       |      | WALL MOUNTED VACANCY SENSOR CONTROL, WITH MANUAL ON, AUTOMATIC OFF CONTROL, MOUNTED AT 48" AFF.   |
| ⊕                      |       |      | CEILING MOUNTED OCCUPANCY SENSOR FOR OPEN SPACE OR HALLWAY  |
| ⊕                      |       |      | DUPLEX CONVENIENCE RECEPTACLE MOUNTED IN SINGLE BOX-FLUSH WALL, MOUNTED 20 AMP, 120V AC, AT +15" AFF (U.D.N.)   |
| ⊕                      |       |      | DUPLEX GROUND FAULT INTERRUPT CONVENIENCE RECEPTACLE - FLUSH WALL MOUNTED 20 AMP, 120V AC, AT +15" AFF (U.D.N.)   |
| ⊕                      |       |      | DUPLEX ARC FAULT INTERRUPT CONVENIENCE RECEPTACLE - FLUSH WALL MOUNTED 20 AMP, 120V AC, AT +15" AFF (U.D.N.)  |
| ⊕                      |       |      | DUPLEX CONVENIENCE RECEPTACLE CONTROLLED FROM WALL SWITCH 20 AMP, 120V AC, AT +15" AFF (U.D.N.)   |
| ⊕                      |       |      | DUPLEX CONVENIENCE RECEPTACLE CONTROLLED FROM WALL SWITCH 20 AMP, 120V AC, AT +15" AFF (U.D.N.)   |
| ⊕                      |       |      | COMBINATION WALL SWITCH AND DUPLEX RECEPTACLE - FLUSH WALL MOUNTED IN SINGLE BOX, AT COUNTER TOP  |
| ⊕                      |       |      | 220 V, 20 AMP RECEPTACLE - FLUSH WALL MOUNTED IN A SINGLE BOX.  |
| ⊕                      |       |      | TELEPHONE OR TELE/DATA OUTLET - FLUSH WALL MOUNTED, WITH 3/4" CD STUB UP TO CEILING SPACE AND/OR TO TELEPHONE TERMINAL.<br>V = WALL MOUNTED   |
| ⊕                      |       |      | FLUSH CEILING (WALL) MOUNTED JUNCTION BOX   |
| ⊕                      |       |      | PULL BOX  |
| ⊕                      |       |      | SURFACE MOUNTED LIGHTING/POWER PANEL BOARD  |
| ⊕                      |       |      | FLUSH MOUNTED LIGHTING/POWER PANEL BOARD  |
| ⊕                      |       |      | SURFACE MOUNTED TELEPHONE TERMINAL CABINET  |
| ⊕                      |       |      | DISCONNECT SWITCH - 100A SWITCH, 60A FUSE UNFUSED EXCEPT WHERE FUSE SIZE IS INDICATED, 3 POLE EXCEPT WHERE NOTED  |
| ⊕                      |       |      | FLUSH MOUNTED CIRCUIT BREAKER - 100A FRAME, 60A TRIP 3 POLE EXCEPT WHERE SIZE IS INDICATED  |
| ⊕                      |       |      | MOTOR CONTROLLER - WITH NEMA SIZE AS INDICATED  |
| ⊕                      |       |      | LOW VOLTAGE TRANSFORMER - RATING AND VOLTAGE AS INDICATED   |
| ⊕                      |       |      | MOTOR (EXHAUST FAN, A-C UNIT, CONDENSING UNIT & FANCOIL)  |
| ⊕                      |       |      | MOTORIZED SMOKE DAMPER  |
| ⊕                      |       |      | SPACE IONIZATION SMOKE AND CARBON MONOXIDE DETECTOR WITH SELF CONTAINED BUZZER  |
| ⊕                      |       |      | ELECTROMAGNETIC DOOR HOLDER   |
| ⊕                      |       |      | FIRE ALARM CONTROL PANEL AND ANNUNCIATOR  |
| ⊕                      |       |      | TELEVISION OUTLET - FLUSH WALL MOUNTED AT +12" AFF, WITH 1/2" CD STUB UP TO CEILING<br>C = 75 OHM COAXIAL JACK<br>T = 300 OHM TWIN CABLE  |
| ⊕                      |       |      | ELECTRIC DOOR BELL PUSHBUTTON   |
| ⊕                      |       |      | ELECTRIC DOOR CHIME   |
| ⊕                      |       |      | CONCEALED CONDUIT   |
| ⊕                      |       |      | EXPOSED CONDUIT RUN PARALLEL TO BUILDING STRUCTURE  |
| ⊕                      |       |      | CONDUIT RUN UNDER GROUND  |
| ⊕                      |       |      | CONDUIT TURNING UP  |
| ⊕                      |       |      | CONDUIT TURNING DOWN  |
| ⊕                      |       |      | CONDUIT STUB UP WITH FLEXIBLE EQUIPMENT CONNECTION  |
| ⊕                      |       |      | CAPPED CONDUIT  |
| ⊕                      |       |      | GROUND CONNECTION   |
| ⊕                      |       |      | HOMERUN - NUMERAL WHERE USED INDICATES CIRCUIT NUMBER FOR REFERENCE ONLY (EMT CONDUIT)<br>2 #12 COPPER CONDUCTOR, THHN INSULATION IN 1/2" EMT (U.D.N.)<br>3 #12 COPPER CONDUCTOR THHN INSULATION IN 1/2" EMT (U.D.N.) |
| ⊕                      |       |      | FUSED SWITCH<br>100 AMP SWITCH - 100 AMP TYPE 'FA' FUSE   |
| ⊕                      |       |      | UNFUSED SWITCH - 100 AMP  |
| ⊕                      |       |      | CIRCUIT BREAKER - 100 AMP FRAME - 100 AMP TRIP<br>LT = LONG TIME SETTING<br>ST = SHORT TIME SETTING<br>I = INSTANTANEOUS SETTING  |
| ⊕                      |       |      | CURRENT TRANSFORMER   |
| ⊕                      |       |      | WIRING METHOD: ALL WIRING SHALL BE IN (EMT) CONDUIT WITH CONDUCTORS TO BE OF THHN INSULATION FOR INSIDE AND THWN FOR OUTSIDE.   |



STAND ALONE LIGHTING CONTROL WIRING DIAGRAM SCALE NONE 3

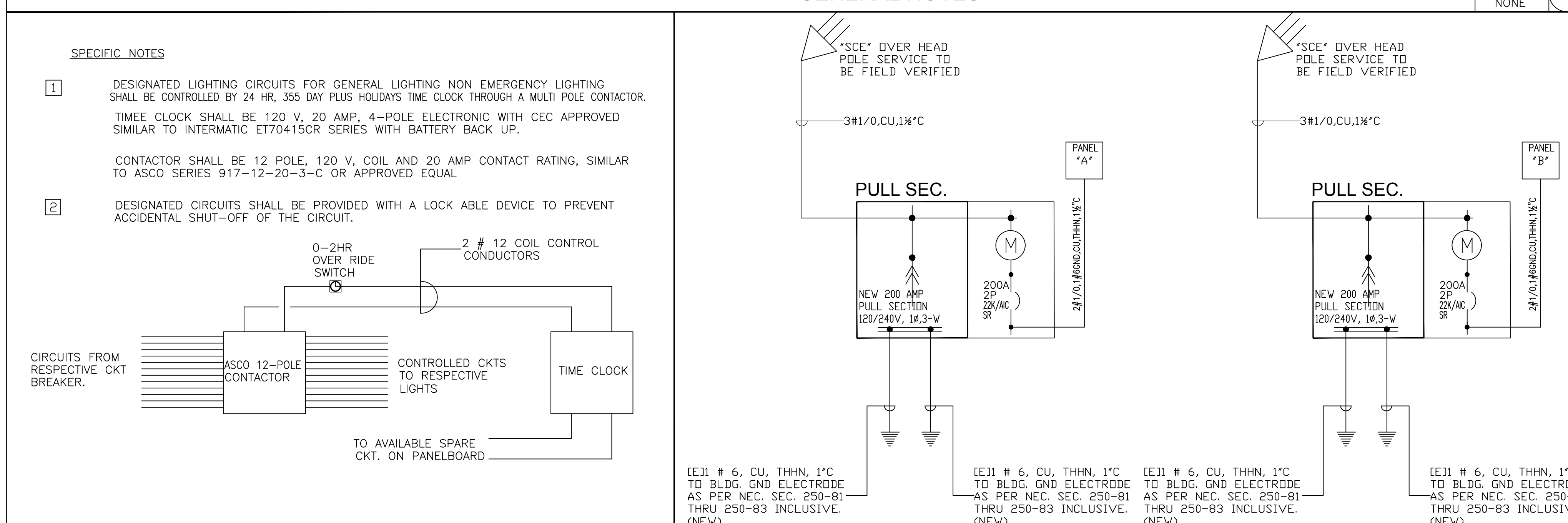


AFTER HOUR LIGHTING CONTROL DIAGRAM SCALE NONE 6

| LIGHTING FIXTURE SCHEDULE |  |              |                                    |          |       |        |            |             |  |
|---------------------------|--|--------------|------------------------------------|----------|-------|--------|------------|-------------|--|
| TYPE                      | DESCRIPTION  | MANUFACTURER | CATALOG NO.                        | MOUNTING | LAMPS |        |            | TOTAL WATTS |  |
|                           |  |              |                                    |          | QUAN. | RATING | TYPE       |             |  |
| A                         | 1'x4' SURFACE MOUNTED LED WRAP AROUND LIGHT FIXTURE IN 20 GAUGE STEEL HOUSING WITH LOW GLARE SHATTER PROOF SMOOTH LENS AND DIMMABLE DRIVER, 40K COLOR TEMPERATURE.                             | LITHONIA LTG | L28548-36WT-40K                    | SURFACE  | LED   | 36W    | LED-4,000K | 36W         |  |
| B                         | 6" APERTURE LED DOWNLIGHT FIXTURE IN A DIE CAST ALUMINUM HOUSING, WITH CLEAR ANODIZED REFLECTOR, INTEGRAL LED DRIVER, WITH WHITE CEILING TRIM, IC RATED AND UNIVERSAL HANGING BATTERY CHARGER. | MAXILUME     | HLD6IC-AT-120-RL607-750L-30K-CL-WH | RECESSED | LED   | 16W    | LED-3,000K | 16W         |  |
| C                         | ULTRA SLIM DIE-CAST ALUMINUM HOUSING WITH STENCIL STYLEFACE PLATE, LED LIGHT SOURCE WITH UNIVERSAL J-BOX MOUNTING, UL LISTED WITH 90 MIN. NI-CAD EMERGENCY BATTERY AND CHARGER.                | LSI LIGHTING | LOW-S-W-1R-120-ELN-EM              | WALL     | 2 LED | 10W    | LED LAMPS  | 10W         |  |
| X                         | ULTRA SLIM DIE-CAST ALUMINUM HOUSING WITH STENCIL STYLEFACE PLATE, LED LIGHT SOURCE WITH UNIVERSAL J-BOX MOUNTING, UL LISTED WITH 90 MIN. NI-CAD EMERGENCY BATTERY AND CHARGER.                | LSI LIGHTING | LOW-S-W-1R-120-ELN-EM              | WALL     | 2 LED | 10W    | LED LAMPS  | 10W         |  |

LIGHTING FIXTURE SCHEDULE SCALE NONE 2

| GENERAL NOTES  |   |   |   |
|--|---|---|---|
| 1. GENERAL   |   | 2. COORDINATION   |   |
| 1.1 PROVIDE ALL EQUIPMENT MATERIAL LABOR SERVICES, HOISTING SUPPORT AND SUPERVISION FOR ALL WORK SHOWN ON THE ELECTRICAL DRAWING AND AS SPECIFIED.   | OF FINAL ACCEPTANCE BY THE OWNER EXCEPT THAT WHERE GUARANTEE OF WARRANTIES FOR LONGER TERMS ARE SPECIFIED BY CONTRACT, SUCH LONGER TERM SHALL APPLY AT NO ADDITIONAL COST TO THE OWNER WITHIN 24 HOURS AFTER NOTIFICATION OF ELECTRICAL TROUBLE CORRECT ANY DEFICIENCIES WHICH OCCUR DURING THE GUARANTEE PERIOD, ALL TO THE SATISFACTION OF THE STORE OWNER.   | 2.4 SECURE AND PAY FOR ALL NECESSARY APPROVALS, PERMITS, INSPECTIONS, ETC., WHERE REQUIRED, AND DELIVER THE OFFICIAL RECORDS OR THE GRANTING OF PERMITS TO THE STORE WITHOUT ADDITIONAL COST TO THE STORE OWNER.  | 3.5 REFER TO THE ARCHITECTURAL DRAWINGS FOR FINISHES OF EQUIPMENT AND MATERIAL NOT SPECIFIED HERE-IN.   |
| 1.2 THE ENTIRE WORK PROVIDED SHALL BE CONSTRUCTED AND FINISHED IN EVERY RESPECT IN WORKMANLIKE AND SUBSTANTIAL MANNER. FURNISH AND INSTALL ALL WORK AS MAY BE NECESSARY TO COMPLETE THE SYSTEMS IN ACCORDANCE WITH THE BEST TRADE PRACTICE AND TO THE SATISFACTION OF THE ARCHITECT/ENGINEER, THE ENTIRE ELECTRICAL WORK AND INSTALLATION SHALL BE READY IN EVERY RESPECT FOR SATISFACTORY AND EFFICIENT OPERATION WHEN COMPLETED. | 1.7 PROVIDE ALL MATERIAL AND EQUIPMENT AS REQUIRED, AND MAKE THE FINAL CONNECTIONS TO ALL EQUIPMENT.  | 3.0 COORDINATION: 3.1 COORDINATE THE WORK OF THIS SECTION WITH THE WORK OF OTHER SECTIONS IN AMPLIFIED TIME FOR THE PROPER INSTALLATION AND CONNECTION AND FOR THE PROVISIONS OF ALL OPENINGS REQUIRED IN FLOORS AND WALLS.   | 4.0 SUBMITTALS: 4.1 PREPARE AND SUBMIT FOR REVIEW AND APPROVAL BY THE ARCHITECT AND ENGINEER DETAILED SHOP DRAWINGS FOR THE EQUIPMENT DESCRIBED ON THE DRAWINGS SHOWING ALL OF THE REQUIREMENTS SPECIFIED. EQUIPMENT INSTALLED WITHOUT APPROVAL SHALL BE DONE AT THE RISK OF THIS SECTION AND THE COST OF REMOVAL OF SUCH EQUIPMENT OR RELATED WORK WHICH IS JUDGED UNSATISFACTORY FOR ANY REASON SHALL BE AT THE EXPENSE OF THIS SECTION CONTRACTOR. 4.2 DURING THE PROGRESS OF THE WORK, MAKE A CAREFUL RECORD OF ALL CHANGES BY WHICH THE ACTUAL INSTALLATION DIFFERS FROM THAT INDICATED ON THE CONTRACT DRAWINGS. UPON COMPLETION OF THE INSTALLATION, FURNISH TWO COMPLETE SETS OF AS-BUILT DRAWINGS. THESE DRAWINGS SHALL BE SUBMITTED TO THE OWNER FOR APPROVAL. AFTER APPROVAL, THEY SHALL BECOME THE PROPERTY OF THE OWNER. FINAL PAYMENT WILL BE WITHHELD UNTIL RECEIPT OF THE APPROVED RECORD DRAWINGS. |
| 1.3 THE DRAWINGS SHOW VARIOUS CONDUIT AND WIRING SYSTEMS SCHEMATICALLY AND PROVIDE CIRCUIT NUMBERS FOR REFERENCE ONLY. BALANCE ALL PANELBOARDS AND RECORD ALL CIRCUIT NUMBERS ON AS-BUILT DRAWINGS AND ON PANELBOARD DIRECTORY.  | 1.8 FOR ALL LOW VOLTAGE CONTROL WIRING FOR THE MECHANICAL EQUIPMENT, PROVIDE 1/2" CD, WITH PULL STRING AS INDICATED ON THE MECHANICAL DRAWINGS. COORDINATE WITH MECHANICAL/PLUMBING CONTRACTOR FOR THE TERMINATION POINT OF EACH CONDUIT.   | 3.2 CAREFULLY CHECK SPACE REQUIREMENTS WITH OTHER TRADES TO INSURE THAT ALL EQUIPMENT AND MATERIALS CAN BE INSTALLED IN THE SPACE ALLOTTED THERETO, INSTALL ALL WORK TO AVOID OBSTRUCTION AND PRESERVE HEADROOM AND CEILING HEIGHT REQUIREMENTS.                                |   |
| 1.4 PROVIDE THE REQUIRED SUPPORTS AND HANGERS FOR EQUIPMENT AND MATERIAL SO THAT STRUCTURAL LOADING WILL NOT EXCEED THE ALLOWABLE STRUCTURAL LOADING OF THE STRUCTURE.   | 1.9 ALL LOW VOLTAGE CONTROL WIRING TERMINATIONS SHALL BE MADE IN A J-BOX WITH COVER PLATE. NO LOOSE WIRING IS ALLOWED.  | 3.3 CAREFULLY CHECK THE DOCUMENTS OF OTHER TRADES TO ASCERTAIN THE REQUIREMENTS OF ANY MATERIALS OR EQUIPMENT BEING FURNISHED AND/OR INSTALLED BY THAT SECTION AND PROVIDE THE PROPER INSTALLATION AND/OR CONDITIONS INCLUDING ANY CONTROL WIRING REQUIRED.                     |   |
| 1.5 FURNISH AND SET ALL SLEEVES FOR PASSAGE OF CONDUITS THROUGH STRUCTURAL MASONRY AND CONCRETE WALLS, FLOORS AND ELSEWHERE, AS REQUIRED FOR THE PROPER PROTECTION OF EACH CONDUIT PASSING THROUGH BUILDING SURFACES, WHERE CONDUITS PENETRATE THE FIRE RATED WALLS AND CEILING THE PENETRATION SHALL BE SEALED WITH 3M FIRE STOP MATERIAL TO RETAIN THE FIRE RATING INTEGRITY.  | 2.0 CODES AND PERMITS: 2.1 ALL WORK SHALL BE DONE IN FULL COMPLIANCE WITH 2019 'CEC' AND CALIFORNIA ENERGY CODE AND ALL LOCAL CODES AND ORDINANCES HAVING JURISDICTION. 2.2 ALL EQUIPMENT AND MATERIALS SHALL BE NEW AND LISTED BY THE UNDERWRITER'S LABORATORIES, INC., MANUFACTURED IN ACCORDANCE WITH ASME, NEMA, ANSI, OR IEEE STANDARDS, AND APPROVED BY DISTRICT ALL OTHER AUTHORITIES HAVING JURISDICTION. 2.3 EQUIPMENT AND DEVICES (SWITCHBOARDS, PANELBOARDS, LIGHT FIXTURES, WIRING DEVICES, FIRE ALARM, COMMUNICATIONS SYSTEM AND EMERGENCY SYSTEM) SHALL BE OF THE SPECIFIED MANUFACTURER OR THREE ALTERNATES OUTLINED IN THE ELECTRICAL SPECIFICATION DIVISION 16 AND APPROVED BY STORE OWNER AND ENGINEER. SUBSTITUTION IS LIMITED TO THOSE MANUFACTURER LISTED IN SPECIFICATION SECTION 16010 'ELECTRICAL GENERAL PROVISIONS', NO SUBSTITUTION ALLOWED AFTER AWARD OF CONTRACT. | 3.4 REFER TO THE ARCHITECTURAL REFLECTED CEILING PLANS FOR EXACT LOCATION OF LIGHT FIXTURES, AND CABINETRY DETAILS OR THE EXACT LOCATION AND MOUNTING HEIGHT OF ALL OUTLETS. ALL COUNTER AND CABINET MOUNTED OUTLET LOCATIONS SHALL BE APPROVED BY ARCHITECT PRIOR TO ROUGH-IN. |   |
| 1.6 SUBMIT A SINGLE GUARANTEE STATING THAT ALL PORTIONS OF THE WORK ARE IN ACCORDANCE WITH CONTRACT REQUIREMENTS, GUARANTEE ALL WORK AGAINST FAULTS AND IMPROPER MATERIAL AND WORKMANSHIP FOR A PERIOD OF ONE YEAR FROM THE DATE   |   |   |   |



EXISTING SERVICES SINGLE LINE DIAGRAM SCALE NONE 5

**CEM**  
CONSULTING ENGINEERS  
MECHANICAL - ELECTRICAL - PLUMBING  
2277 TOWNSGATE RD, SUITE 216  
WESTLAKE VILLAGE CA 91361  
TEL: 805-371-7460 E: MAL@CEMENGINEERS.COM

CONSULTANTS:

PRINTED DATE: 12-13-2021  
DRAWN BY: R.T.E.  
CHECKED BY: R.T.E.  
PROJECT NO.: EMA-34-21

CLIENT: **DIAMOND AUTOMOTIVE CAFE**  
PROJECT NAME & ADDRESS: **55761 TWENTYNINE PALMS HWY YUCCA VALLEY, CA 92284**

| APPROVALS           |          |                   |
|---------------------|----------|-------------------|
| APPROVED BY         | INITIALS | DATE              |
| ISSUED FOR PLAN CHK | R.T.E.   | DECEMBER 13, 2021 |
|                     |          |                   |
|                     |          |                   |
|                     |          |                   |
|                     |          |                   |
|                     |          |                   |
|                     |          |                   |
|                     |          |                   |
|                     |          |                   |
|                     |          |                   |
|                     |          |                   |
|                     |          |                   |
|                     |          |                   |
|                     |          |                   |
|                     |          |                   |
|                     |          |                   |
|                     |          |                   |
|                     |          |                   |
|                     |          |                   |
|                     |          |                   |
|                     |          |                   |
|                     |          |                   |
|                     |          |                   |
|                     |          |                   |

SHEET TITLE: **ELECTRICAL SYMBOL LIST, FIXTURE SCHEDULE, SINGLE LINE DIAGRAM, GENERAL NOTES AND DETAILS**  
SHEET NUMBER: **E-1**

CONSULTANTS:



PRINTED DATE: 12-13-2021

DRAWN BY: R.T.E.

CHECKED BY: R.T.E.

PROJECT NO.: EMA-34-21

CLIENT:

**DIAMOND AUTOMOTIVE CAFE**

PROJECT NAME & ADDRESS:  
**55761 TWENTYNINE PALMS HWY**  
**YUCCA VALLEY, CA 92284**

CLIENT:

APPROVALS

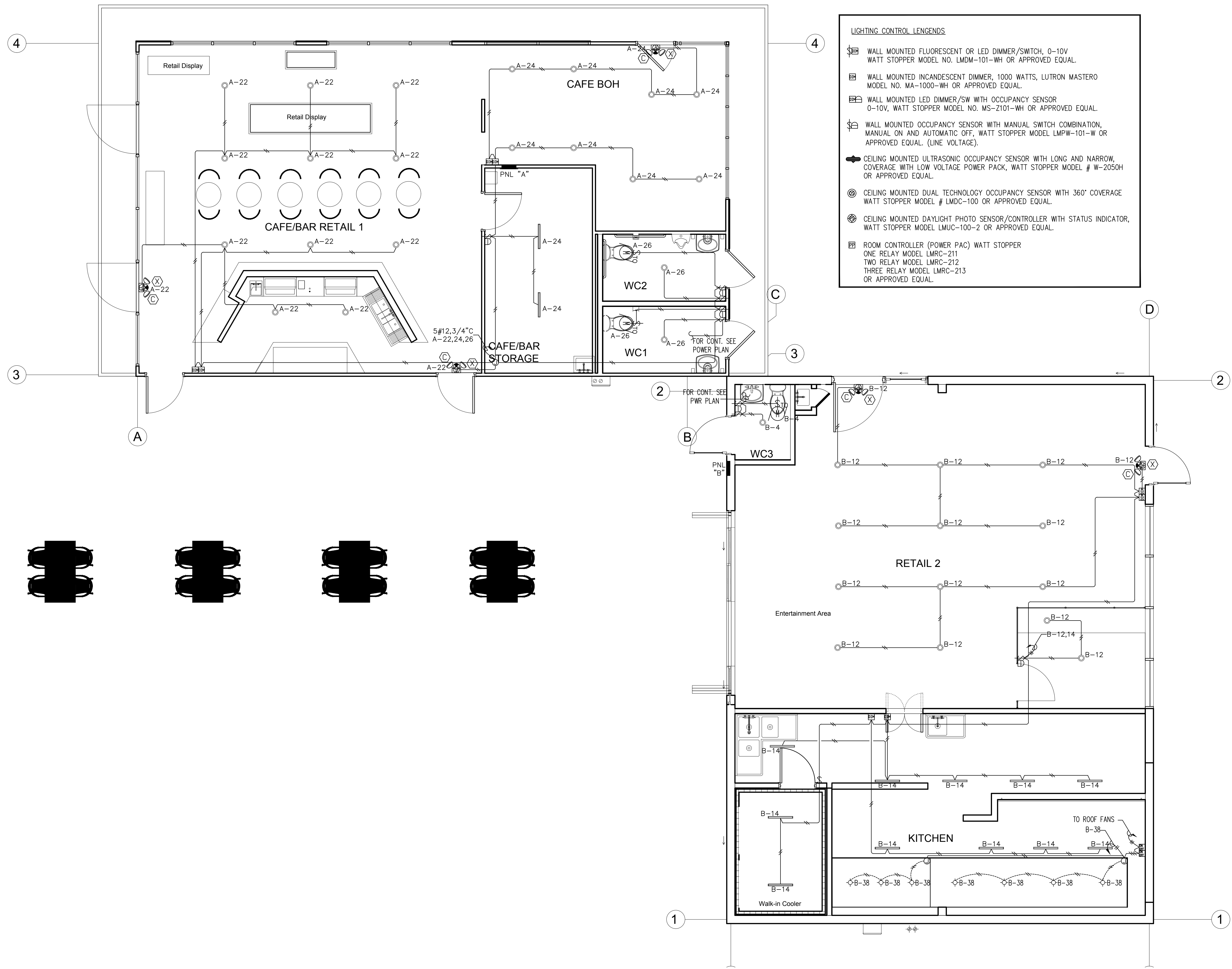
| APPROVED BY         | INITIALS | DATE              |
|---------------------|----------|-------------------|
| ISSUED FOR PLAN CHK | R.T.E.   | DECEMBER 13, 2021 |
|                     |          |                   |
|                     |          |                   |
|                     |          |                   |
|                     |          |                   |
|                     |          |                   |
|                     |          |                   |
|                     |          |                   |
|                     |          |                   |
|                     |          |                   |

SHEET TITLE

**NEW DINING ROOM AND KITCHEN LIGHTING PLANS**

SHEET NUMBER

**E-2**



**LIGHTING CONTROL LEGENDS**

- ☒ WALL MOUNTED FLUORESCENT OR LED DIMMER/SWITCH, 0-10V WATT STOPPER MODEL NO. LMDM-101-WH OR APPROVED EQUAL.
- ☒ WALL MOUNTED INCANDESCENT DIMMER, 1000 WATTS, LUTRON MASTERO MODEL NO. MA-1000-WH OR APPROVED EQUAL.
- ☒ WALL MOUNTED LED DIMMER/SW WITH OCCUPANCY SENSOR 0-10V, WATT STOPPER MODEL NO. MS-Z101-WH OR APPROVED EQUAL.
- ☒ WALL MOUNTED OCCUPANCY SENSOR WITH MANUAL SWITCH COMBINATION, MANUAL ON AND AUTOMATIC OFF, WATT STOPPER MODEL LMPW-101-W OR APPROVED EQUAL. (LINE VOLTAGE).
- ☒ CEILING MOUNTED ULTRASONIC OCCUPANCY SENSOR WITH LONG AND NARROW COVERAGE WITH LOW VOLTAGE POWER PACK, WATT STOPPER MODEL # W-2050H OR APPROVED EQUAL.
- ☒ CEILING MOUNTED DUAL TECHNOLOGY OCCUPANCY SENSOR WITH 360° COVERAGE WATT STOPPER MODEL # LMDC-100 OR APPROVED EQUAL.
- ☒ CEILING MOUNTED DAYLIGHT PHOTO SENSOR/CONTROLLER WITH STATUS INDICATOR, WATT STOPPER MODEL LMUC-100-2 OR APPROVED EQUAL.
- ☒ ROOM CONTROLLER (POWER PAC) WATT STOPPER  
 ONE RELAY MODEL LMRC-211  
 TWO RELAY MODEL LMRC-212  
 THREE RELAY MODEL LMRC-213  
 OR APPROVED EQUAL.

NEW LIGHTING PLAN

SCALE  
 1/4"=1'-0"

1



**CONSULTING ENGINEERS**  
MECHANICAL - ELECTRICAL - PLUMBING  
2277 TOWNSGATE RD. SUITE 216  
WESTLAKE VILLAGE CA 91361  
TEL: 805-371-7460 FAX: 805-371-7461

CONSULTANTS:



PRINTED DATE: 12-13-2021

DRAWN BY: R.T.E.

CHECKED BY: R.T.E.

PROJECT NO.: EMA-34-21

CLIENT:

**DIAMOND AUTOMOTIVE CAFE**

PROJECT NAME & ADDRESS:

55761 TWENTYNINE PALMS HWY  
YUCCA VALLEY, CA 92284

CLIENT:

APPROVALS

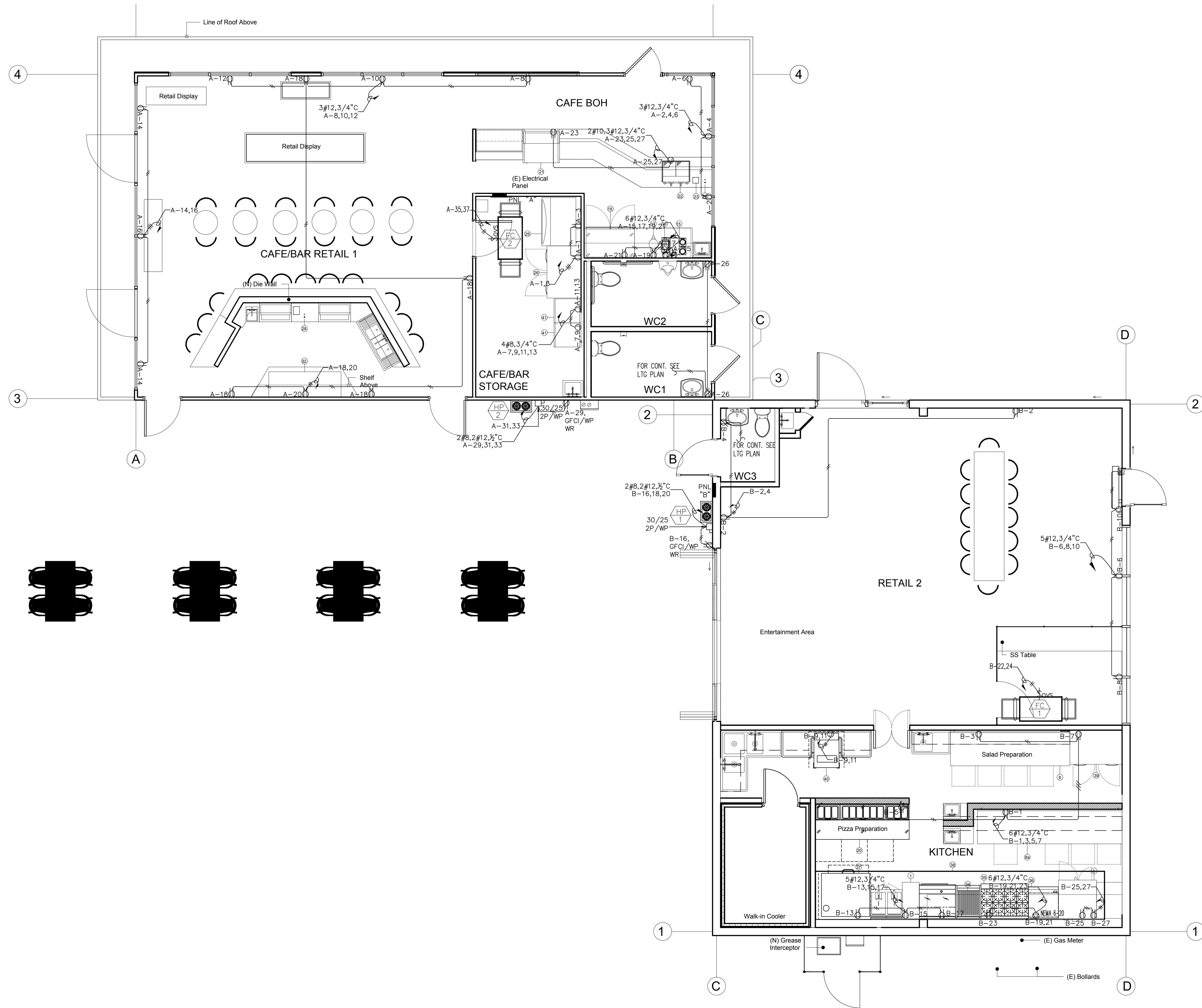
| APPROVED BY     | INITIALS | DATE              |
|-----------------|----------|-------------------|
| ISSUED FOR PLAN | R.T.E.   | DECEMBER 13, 2021 |
| CHK             |          |                   |
|                 |          |                   |
|                 |          |                   |
|                 |          |                   |
|                 |          |                   |
|                 |          |                   |
|                 |          |                   |

SHEET TITLE

**NEW DINING ROOM AND KITCHEN POWER PLANS**

SHEET NUMBER

**E-3**



NEW POWER PLAN

SCALE  
1/4"=1'-0"

1



**CONSULTING ENGINEERS**  
 MECHANICAL - ELECTRICAL - PLUMBING  
 2277 TOWNSGATE RD. SUITE 216  
 WESTLAKE VILLAGE CA 91361  
 TEL: 805-371-7460 FAX: 818-718-9127

CONSULTANTS:



PRINTED DATE: 12-13-2021

DRAWN BY: R.T.E.

CHECKED BY: R.T.E.

PROJECT NO.: EMA-34-21

CLIENT:

**DIAMOND AUTOMOTIVE CAFE**

PROJECT NAME & ADDRESS:  
 55761 TWENTYNINE PALMS HWY  
 YUCCA VALLEY, CA 92284

CLIENT:

APPROVALS

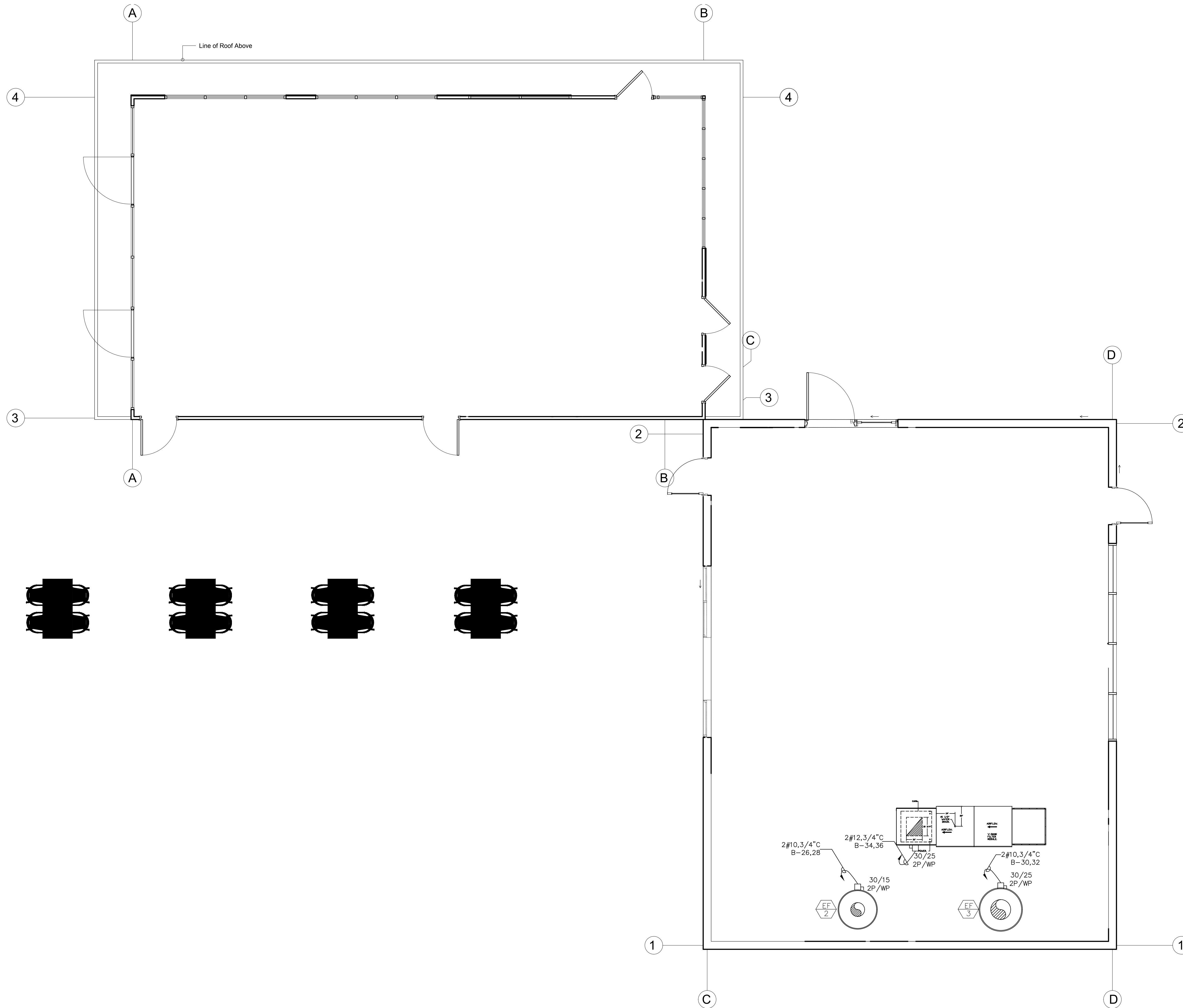
| APPROVED BY     | INITIALS | DATE              |
|-----------------|----------|-------------------|
| ISSUED FOR PLAN | R.T.E.   | DECEMBER 13, 2021 |
| CHK             |          |                   |
|                 |          |                   |
|                 |          |                   |
|                 |          |                   |
|                 |          |                   |
|                 |          |                   |
|                 |          |                   |
|                 |          |                   |

SHEET TITLE

**ROOF POWER PLAN**

SHEET NUMBER

**E-4**



ROOF POWER PLAN

SCALE  
 1/4"=1'-0"

1





CONSULTANTS:



PRINTED DATE: 12-13-2021

DRAWN BY: R.T.E.

CHECKED BY: R.T.E.

PROJECT NO.: EMA-34-21

CLIENT:

DIAMOND AUTOMOTIVE CAFE

PROJECT NAME & ADDRESS: 55761 TWENTYNINE PALMS HWY YUCCA VALLEY, CA 92284

CLIENT:

PROJECT NAME & ADDRESS:

APPROVALS

Table with columns: APPROVED BY, INITIALS, DATE. Row 1: ISSUED FOR PLAN CHK, R.T.E., DECEMBER 13, 2021

SHEET TITLE: INDOOR LIGHTING TITLLE-24 COMPLIANCE FORMS AND MANDATORY NOTES

SHEET NUMBER

IT-24

SCALE NONE 1

Indoor Lighting Certificate of Compliance (Page 3 of 6). Includes project info, compliance results, and fixture schedule.

Indoor Lighting Certificate of Compliance (Page 2 of 6). Includes project info, compliance results, and fixture schedule.

Indoor Lighting Certificate of Compliance (Page 1 of 6). Includes project info, compliance results, and fixture schedule.

Indoor Lighting Certificate of Compliance (Page 6 of 6). Includes Declaration of Required Certificates of Acceptance and Declaration of Required Certificates of Installation.

Indoor Lighting Certificate of Compliance (Page 5 of 6). Includes Declaration of Required Certificates of Acceptance and Declaration of Required Certificates of Installation.

Indoor Lighting Certificate of Compliance (Page 4 of 6). Includes Declaration of Required Certificates of Acceptance and Declaration of Required Certificates of Installation.