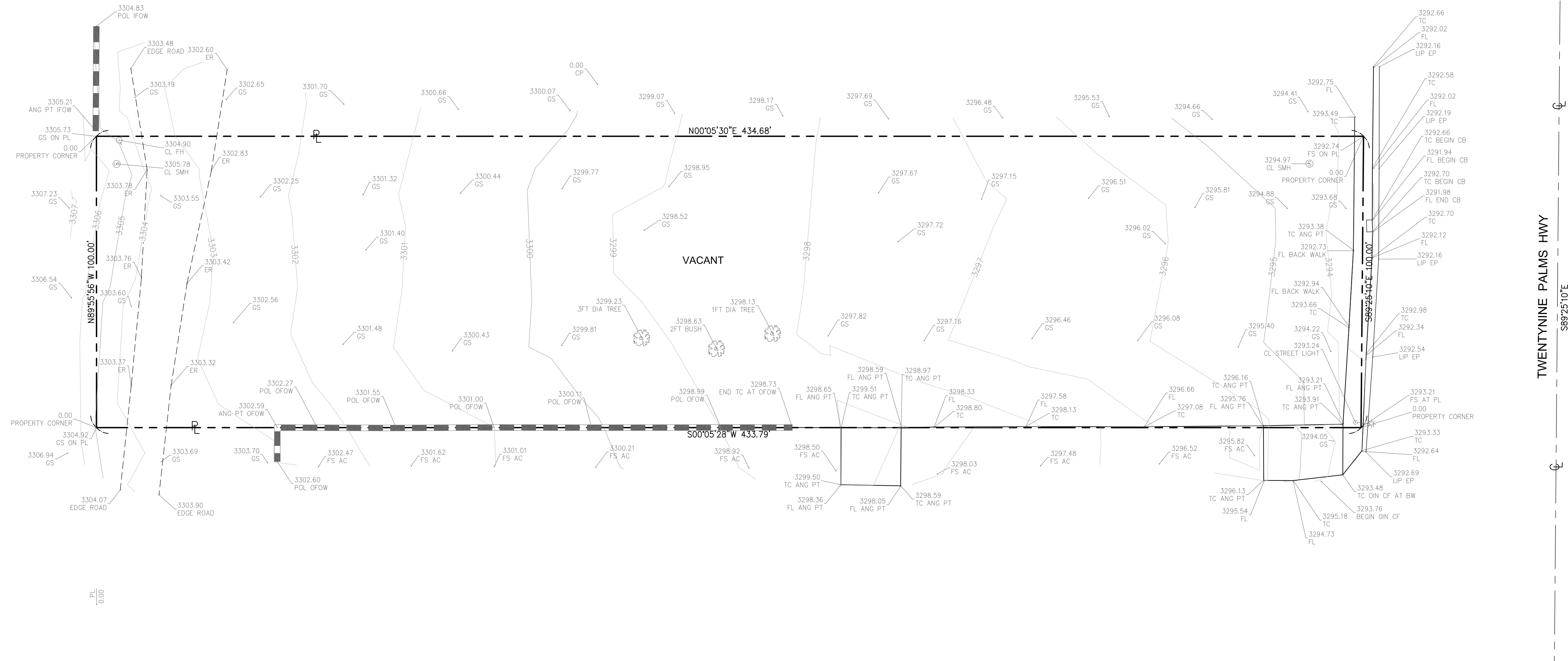
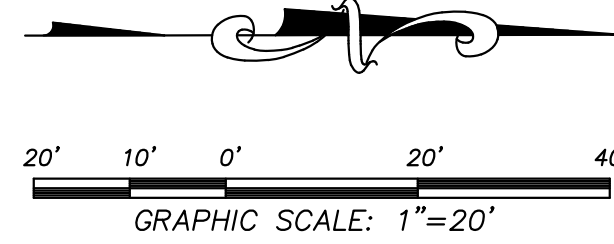


# TOPOGRAPHIC SURVEY

## 56695 TWENTYNINE PALMS, YUCCA VALLEY, CA

APN # 0587-361-01-0000. 1.00 ACRES, WLY 290.13 FEET OF GOVERNMENT LOT 1  
SAN BERNARDINO COUNTY

JUNE 04, 2022



**LEGEND:**

- CENTERLINE
- PROPERTY LINE
- EASEMENT
- CHAIN LINK FENCE
- WOOD FENCE
- WROUGHT IRON FENCE
- BLOCK WALL
- CONTOUR LINE
- SPOT ELEVATION
- BOLLARD
- FIRE HYDRANT
- GAS VALVE
- LIGHT POLE
- MISCELLANEOUS BOX
- POWER POLE
- SEWER MANHOLE
- STREET LIGHT
- TRAFFIC SIGNAL LIGHT
- STORM DRAIN MANHOLE
- WATER METER
- WATER VALVE
- TREE

**ABBREVIATIONS:**

- AC ASPHALT CONCRETE
- ANT PT ANGLE POINT
- BCR BEGIN CURB RETURN
- BW BACK OF SIDEWALK
- CB CATCH BASIN
- CL CENTERLINE
- COR CORNER
- CLF CHAIN LINK FENCE
- CP CONTROL POINT
- CONC. CONCRETE
- ECR END CURB RETURN
- EP EDGE OF PAVEMENT
- ER EDGE OF ROAD
- EW EDGE OF WALK
- FH FIRE HYDRANT
- FG FINISH GRADE
- FL FLOW LINE
- FND FOUND
- FS FINISH SURFACE
- GS GROUND
- HC HANDICAP
- IFOW INSIDE FACE OF WALL
- INT INTERSECTION
- LP LOW POINTS
- LT LIGHT
- MOC MIDDLE OF CURB
- OFOW OUTSIDE FACE OF WALL
- PL PROPERTY LINE
- PI POINT OF INTERSECTION
- PP POWER POLE
- SMH SEWER MANHOLE
- SDMH STORM DRAIN MANHOLE
- TB TOP OF BERM
- TC TOP OF CURB
- P-WI POST/WROUGHT IRON FENCE

**Survey Bench Mark**

Bench Mark No : EVO 368

QUAD	YEAR	BASE	ELEVATION (FT)	ELEVATION (M)
-	-	-	3281.97	---

DESCRIPTION:  
TWENTYNINE PALMS HWY FROM THE YUCCA VALLEY POST OFFICE, 0.1 MILE WEST OF THE SUMMIT OF A RIDGE, AT THE JUNCTION OF GRAND AVE WHICH LEADS NORTH, 62' FEET NORTH OF HWY 62, 30 FEET EAST OF GRAND AVE, 2' FEET ABOVE HWY. 62, 1 FOOT SOUTH WITNESS POST. NAVD 88