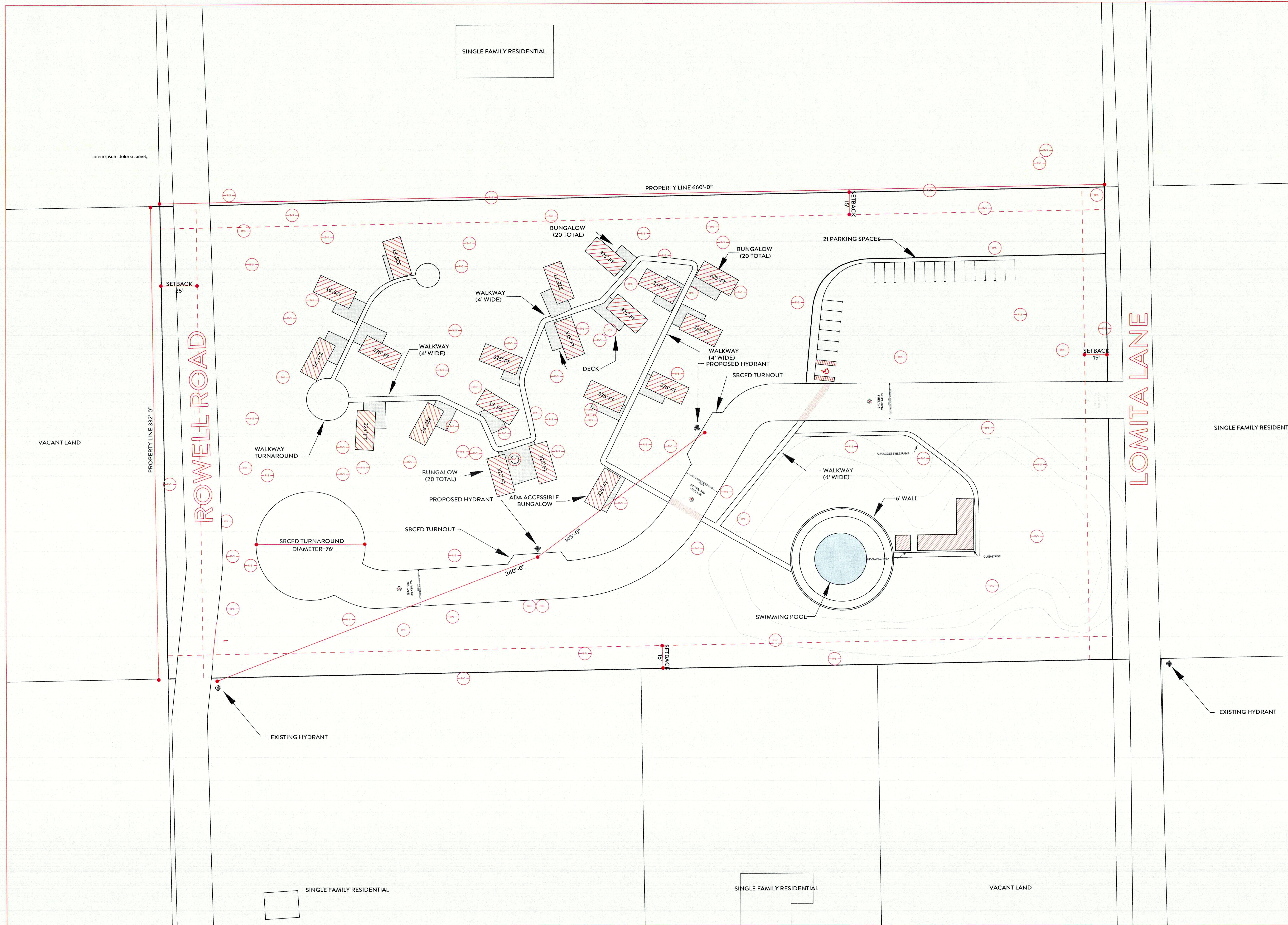
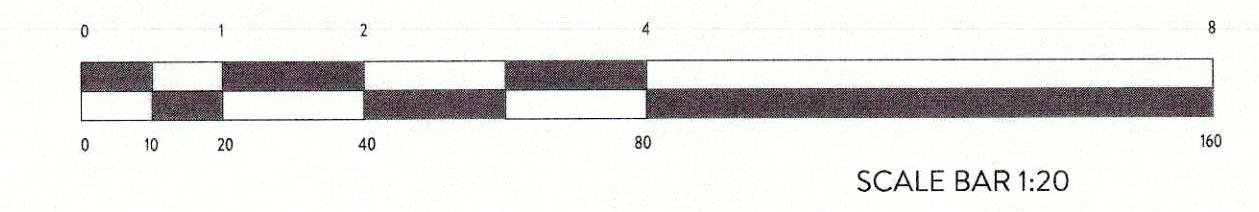
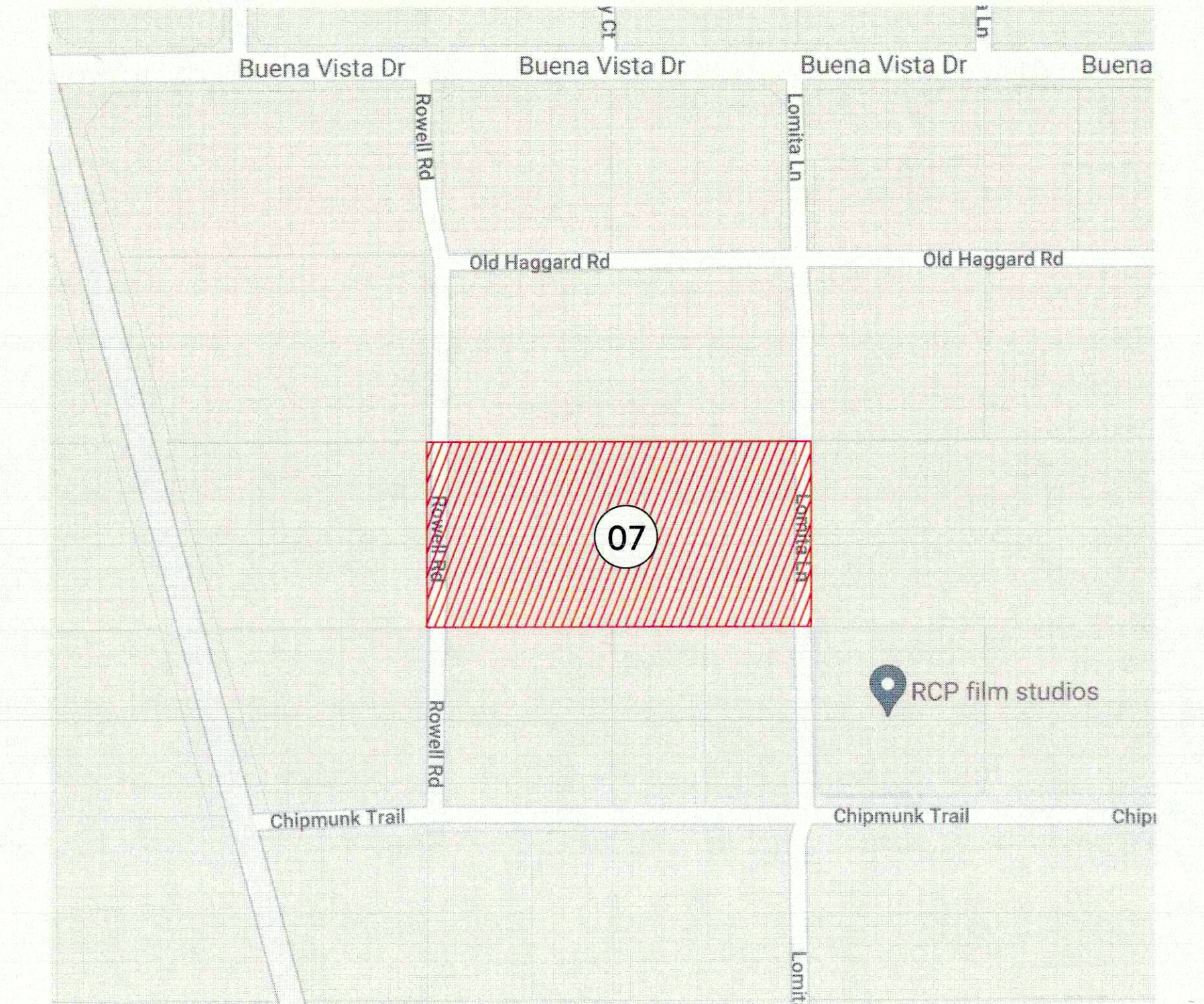


54934 29 PALMS HWY, YUCCA VALLEY CA 92284

VICINITY MAP



LEGAL

ACCESSORS MAP Bl. 0596
LOT 07 APN 0596-271-07-0000

SAN BERNARDINO COUNTY, CA

BUILDING DATA

20 BUNGALOW UNITS.....6,500.0 SQ.FT.
CLUBHOUSE.....1,500.0 SQ.FT.

TOTAL BUILDING AREA 8,000.0 SQ.FT.

JOSHUA TREE SETBACK

DESIGN AND DRAWINGS

MATTHEW ARCHER STEPHENSON

PROPERTY DATA

LOT AREA: 217,800.0 SQ.FT.
LAND USE: COMMERCIAL GENERAL
ZONING: C-G
OCCUPANCY TYPE: R-1

COVERAGE

SITE AREA.....217,800.0 SQ.FT.
COVERED AREA.....8,000.0 SQ.FT. (3.67%)
PARKING COVERAGE.....3,564.0 SQ.FT. (1.63%)