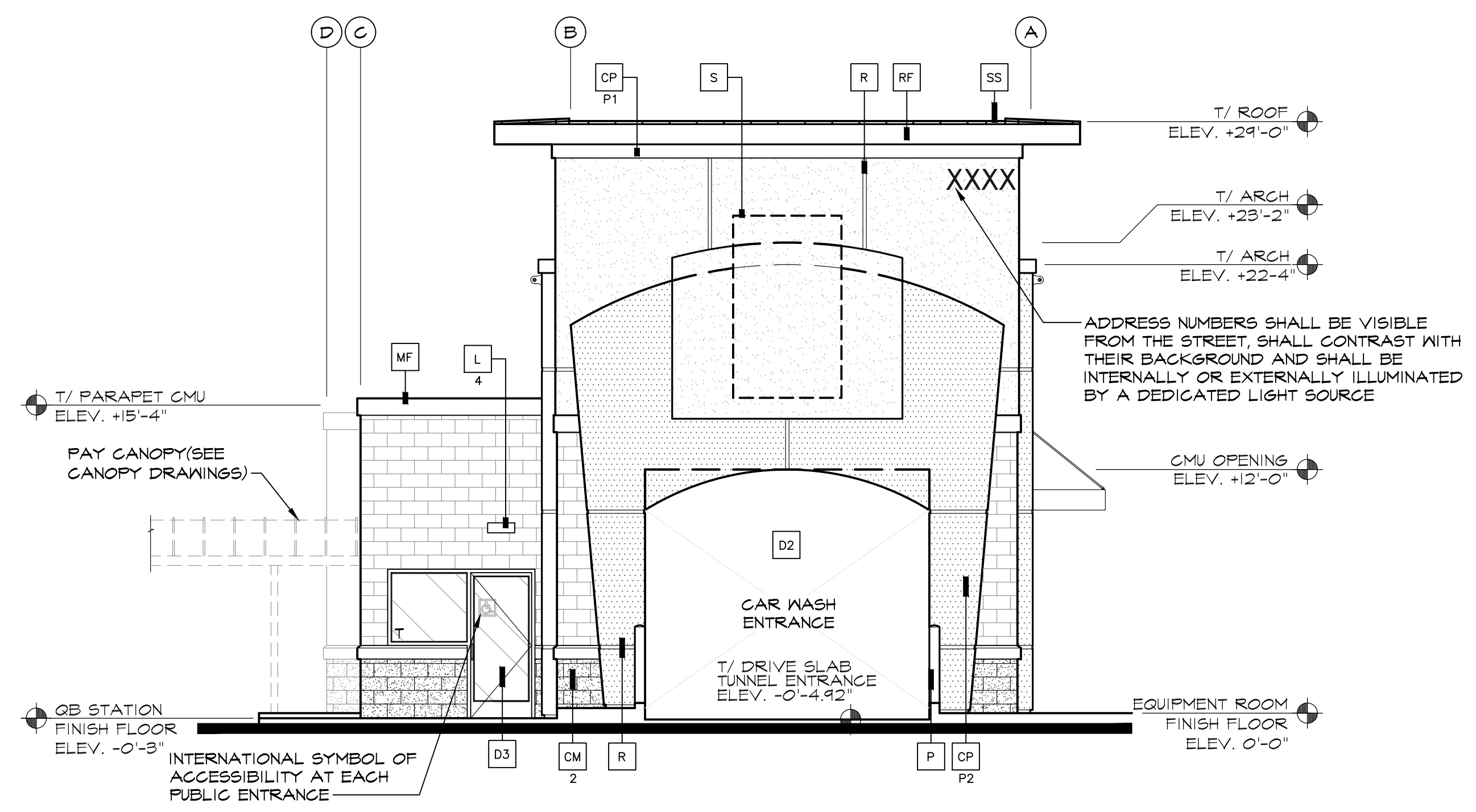


1 WEST ELEVATION  
SCALE: 3/16" = 1'-0"



2 SOUTH ELEVATION  
SCALE: 3/16" = 1'-0"

**KEY NOTES:**

- CM 1 BASALITE SMOOTH HONED FACE CONCRETE MASONRY UNITS - INTEGRAL COLOR STANDARD #225 LIGHT GRAY, WITH INTEGRAL FACTORY "RAINBLOC" WATER REPELLENT ADMIXTURE, MORTAR TO HAVE "RAINBLOC" FOR MORTAR ADMIXTURE, MORTAR COLOR TO MATCH.
- CM 2 BASALITE SPLIT FACE CONCRETE MASONRY UNITS INTEGRAL COLOR STANDARD #190 DARK GRAY WITH INTEGRAL FACTORY "RAINBLOC" WATER REPELLENT ADMIXTURE, MORTAR TO HAVE "RAINBLOC" FOR MORTAR ADMIXTURE, MORTAR COLOR TO MATCH.
- CM 3 PRECISION FACE CONCRETE MASONRY UNIT SILL INTEGRAL COLOR TO MATCH DARK GRAY MAINSCOT WITH INTEGRAL FACTORY "RAINBLOC" WATER REPELLENT ADMIXTURE, MORTAR TO HAVE "RAINBLOC" FOR MORTAR ADMIXTURE, MORTAR COLOR TO MATCH.

- CP ACRYLIC PLASTER COLOR COAT  
COLOR DESIGNATION:  
P1 = MATCH SHERWIN WILLIAMS "QUICK QUACK GREEN"  
P2 = MATCH SHERWIN WILLIAMS #6902 "DECISIVE YELLOW"  
P3 = MATCH SHERWIN WILLIAMS #1004 "SNOWBOUND"  
PLASTER COLOR COAT TO BE SAND FINISH
- D1 HOLLOW METAL DOOR - PAINT TO MATCH SHERWIN WILLIAMS #1025 "BACKDROP"
- D2 OVERHEAD METAL DOOR - PAINT TO MATCH SHERWIN WILLIAMS #1025 "BACKDROP"
- D3 CLEAR ANODIZED ALUMINUM COMMERCIAL GRADE STOREFRONT GLASS DOOR

- DS 8" X 16" THROUGH WALL SCUPPER, COLLECTOR AND DOWNSPOUT, PAINT TO MATCH ADJACENT SURFACE
- EJ 1/4" DEEP REVEAL EXPANSION JOINT
- L LIGHT FIXTURE  
TYPE:  
L1 = LED RADIAL WALL SCONCE (DOWN ONLY)  
L2 = LINEAR FACADE WALL LIGHT (DOWN ONLY)  
L3 = 2 FOOT LED PILASTER LIGHT (DOWN ONLY)  
L4 = WALL PACK (DOWN ONLY)  
CONTACT STEVE FRIEDMAN 1.847.890.1444 WITH HERMITAGE LIGHTING FOR ORDERING LIGHTING. (NO EXCEPTIONS)

- MF METAL FASCIA - PAINT TO MATCH SHERWIN WILLIAMS "QUICK QUACK GREEN" (GREEN)
- P 4" PIPE BOLLARD FILLED WITH CONCRETE - SEE DETAIL #8/A104
- R 2" WIDE X 1/4" DEEP CLEAR ANODIZED ALUMINUM PLASTER REVEAL
- RF METAL ROOF FASCIA - MATCH SHERWIN WILLIAMS "QUICK QUACK GREEN" (GREEN)
- RO 3" DIA PVC ROOF OVERFLOW SCUPPER - PAINT TO MATCH ADJACENT FINISH
- S SIGNAGE BY OTHERS SHOWN DASHED- FOR REFERENCE ONLY UNDER SEPARATE PERMIT. GENERAL CONTRACTOR TO COORDINATE WITH SIGN COMPANY.

- SS STANDING SEAM METAL ROOF FIRESTONE UCG - "DARK IVY".
- T1 METAL WALL CANOPY SYSTEM - COLOR TO MATCH SHERWIN WILLIAMS "QUICK QUACK GREEN"
- T2 WALL CANOPY TIE-BACK SYSTEM - COLOR TO MATCH SHERWIN WILLIAMS "QUICK QUACK GREEN"
- V 24" WIDE X 16" HIGH VENT - PAINT TO MATCH ADJACENT FINISH
- W1 EXTERIOR WINDOW ASSEMBLY - TEMPERED GLASS CLEAR ANODIZED ALUMINUM STOREFRONT
- W2 EXTERIOR FAUX WINDOW ASSEMBLY - WITH BLACK CERAMIC FRIT TEMPERED SPANDREL GLASS CLEAR ANODIZED ALUMINUM STOREFRONT



Revised	By	Appr.	Issued



Client/Project  
QUICK QUACK CARWASH #43-040  
58024 TWENTYNINE PALMS HWY.  
YUCCA VALLEY, CA. 92284

Permit-Seal

Project Number: 2007130200
File Name: #43-040

Rev. Chkd. Desgn. YYMMDD  
Drawing No.  
Revision Sheet