

230/116

PARCEL MAP NO. 18349

BEING A SUBDIVISION OF A PORTION OF THE WEST 1/2 OF THE EAST 1/2 OF THE WEST 1/2 OF THE NORTH 1/2 OF THE NORTHWEST 1/4 OF SECTION 18, TOWNSHIP 1 SOUTH, RANGE 6 EAST, S.B.B.M.

HACKER ENGINEERING, INC. APRIL 2008

LINE TABLE

- L1 = 165.51' <165.49'>
- L2 = 331.00' <330.99'> [331.13']
- L3 = 331.05' [331.13']
- L4 = 39.96' [40']
- L5 = 40.00' [40']
- L6 = 331.13' [331.13']
- L7 = 40.00'
- L8 = 39.99' <40'>

BASIS OF BEARINGS

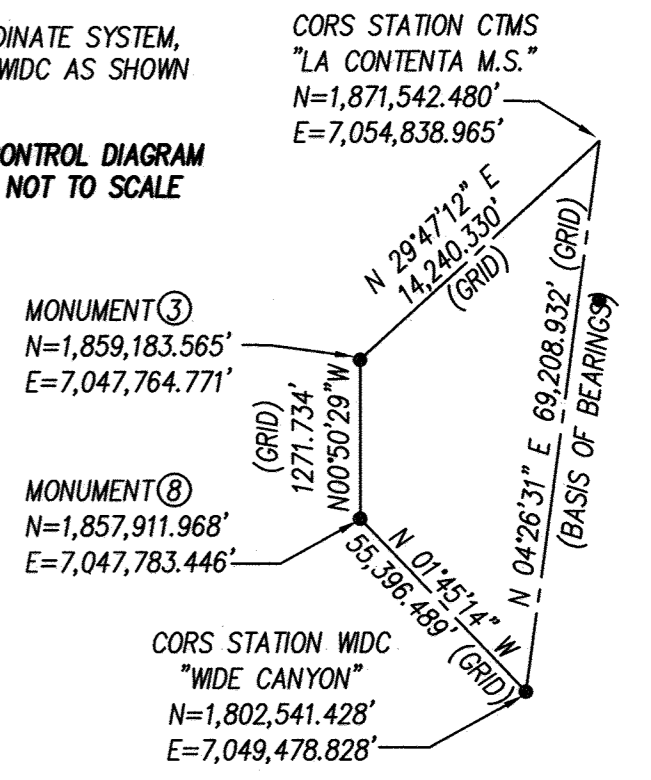
BASIS OF BEARINGS FOR THIS SURVEY IS THE CALIFORNIA STATE PLANE COORDINATE SYSTEM, NAD83, ZONE 5, EPOCH 2006.5849, BASED LOCALLY ON STATIONS CTMS AND WDC AS SHOWN HEREON. DISTANCES SHOWN HEREON ARE GROUND.

GRID TO GROUND COMBINED FACTOR IS 1.000186755.

SURVEYOR'S NOTES

- INDICATES MONUMENT FOUND AS NOTED.
- INDICATES SET 1" I.P. WITH PLASTIC CAP STAMPED "PLS 8328", FLUSH.
- < > INDICATES RECORD DATA PER R.S. 03-014 (R.S. 119/30).
- [] INDICATES RECORD DATA PER R.S. 00-049 (R.S. 114/73).
- () INDICATES RECORD DATA PER P.M. 9033, P.M.B. 96/90-92.
- { } INDICATES RECORD DATA PER P.M. 12742, P.M.B. 167/36-37.
- (()) INDICATES RECORD DATA PER P.M. 6359, P.M.B. 61/3-5.
- ** INDICATES RECORD DATA PER TRACT 5936, M.B. 77/13-19.
- C.S.F.B. INDICATES COUNTY SURVEYOR'S FIELD BOOK.

CONTROL DIAGRAM NOT TO SCALE



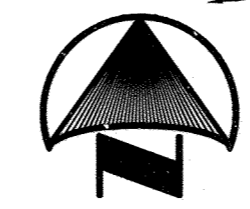
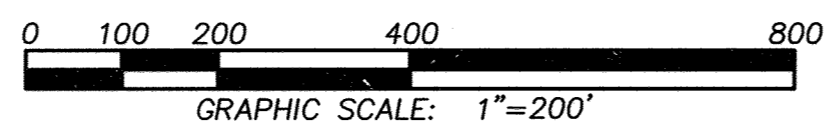
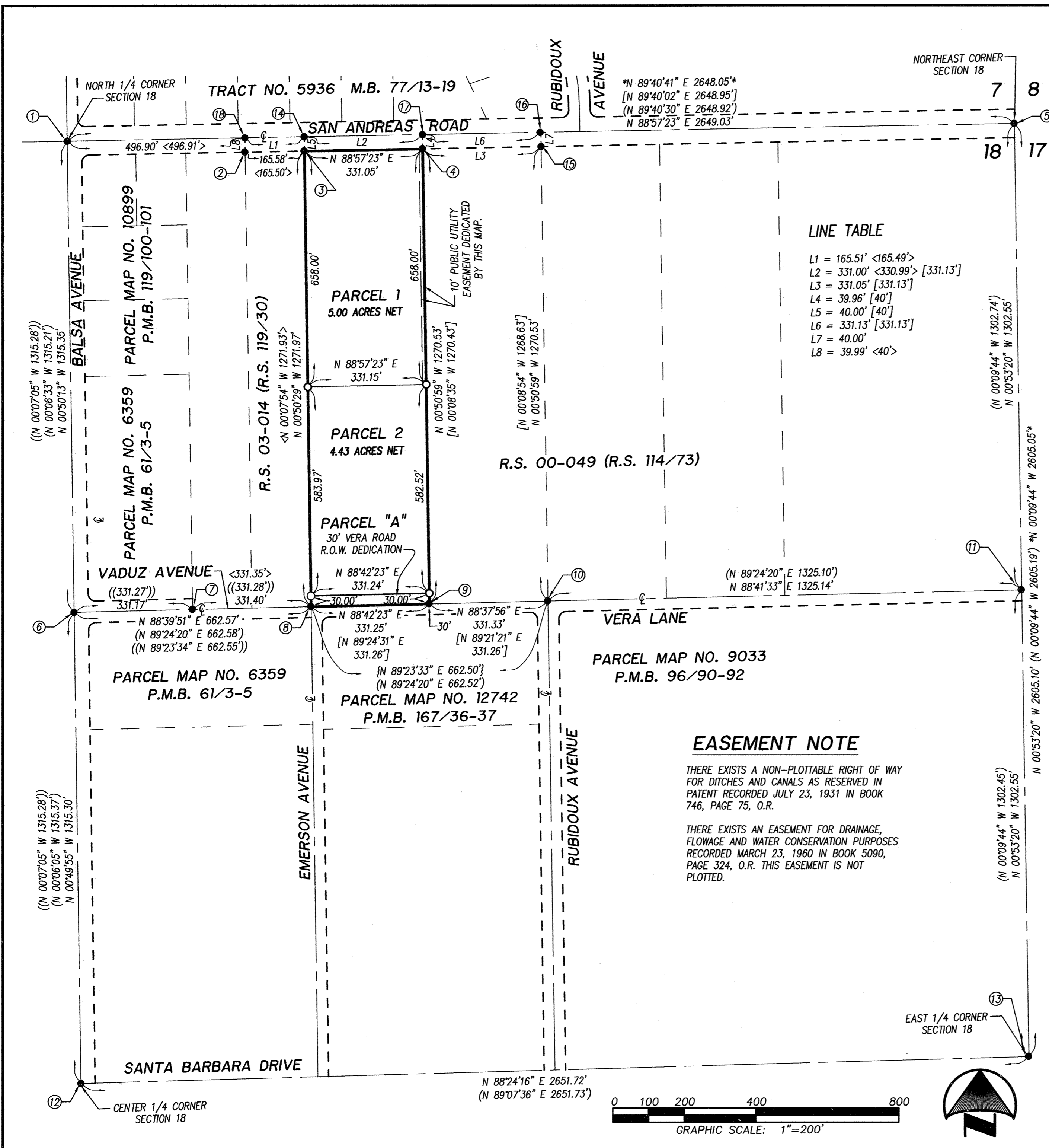
MONUMENT NOTES

- ① FOUND 2" BRASS DISK STAMPED "WBH LS 2091 1/4 S7-S18 1959", DOWN 1.2' PER R.S. 00-049, ACCEPTED AS NORTH 1/4 CORNER SECTION 18.
- ② FOUND REBAR AND PLUG STAMPED "PLS 6394", FLUSH, PER R.S. 03-014, ACCEPTED AS POINT ON S. R.O.W. SAN ANDREAS ROAD.
- ③ FOUND REBAR AND PLUG STAMPED "PLS 6394", DOWN 0.3', PER R.S. 03-014, ACCEPTED AS N.W. CORNER SUBJECT PROPERTY.
- ④ FOUND 1" I.P., PLUG STAMPED "RCE 23256", FLUSH, PER R.S. 00-049, ACCEPTED AS N.E. CORNER SUBJECT PROPERTY.
- ⑤ FOUND SPIKE AND WASHER STAMPED "S.B. CO. SURV", FLUSH, PER C.S.F.B. 4058/491, ACCEPTED AS N.E. CORNER SECTION 18.
- ⑥ FOUND 1" I.P., TAGGED "LS 3151", DOWN 1.0' PER P.M. 9033, ACCEPTED AS CN 1/16 CORNER.
- ⑦ FOUND 1" I.P., TAGGED "LS 4343", FLUSH, PER P.M. 6359, ACCEPTED AS POINT IN CENTERLINE OF VADUZ AVE.
- ⑧ FOUND 1" I.P., TAG ILLEGIBLE, DOWN 0.7', IN LIEU OF TAG STAMPED "LS 4343" PER R.S. 00-049, P.M. 12742 AND P.M. 6359, ACCEPTED AS C-W-NE 1/64 CORNER, SET TAG STAMPED "PLS 8328".
- ⑨ FOUND 1" I.P., PLUG STAMPED "RCE 23256", DOWN 0.2' PER R.S. 00-049, ACCEPTED AS S.E. CORNER W 1/2, E 1/2, W 1/2, N 1/2, N.E. 1/4, SECTION 18.
- ⑩ FOUND 1" I.P., TAGGED "LS 4343", DOWN 0.2' PER R.S. 00-049, P.M. 12742 AND P.M. 9033, ACCEPTED AS NE 1/16 CORNER.
- ⑪ FOUND 2" I.P., TAGGED "LS 4343", DOWN 0.4', PER P.M. 9033, ACCEPTED AS N 1/16 CORNER.
- ⑫ FOUND 2" BRASS DISK STAMPED "LS 3151 C1/4 S18", UP 0.3' PER P.M. 9033, ACCEPTED AS CENTER 1/4 CORNER SECTION 18.
- ⑬ FOUND 2" BRASS DISK STAMPED "LS 2091 1/4 18-17 1959", DOWN 1.1' PER P.M. 9033, ACCEPTED AS EAST 1/4 CORNER SECTION 18.
- ⑭ FOUND NAIL AND TIN TAGGED "LS 6394", FLUSH, PER R.S. 03-014, ACCEPTED AS N.W. CORNER W 1/2, E 1/2, W 1/2, N 1/2, N.E. 1/4, SECTION 18.
- ⑮ FOUND 5/8" REBAR, PLUG ILLEGIBLE, UP 0.2', IN LIEU OF PLUG STAMPED "PLS 6394" PER R.S. 00-049.
- ⑯ FOUND 1" I.P., PLUG ILLEGIBLE, DOWN 0.2', IN LIEU OF PLUG STAMPED "LS 4343" PER R.S. 00-049.
- ⑰ FOUND NAIL AND TIN TAGGED "LS 6394", FLUSH, PER R.S. 03-014, ACCEPTED AS N.E. CORNER W 1/2, E 1/2, W 1/2, N 1/2, N.E. 1/4, SECTION 18.
- ⑱ FOUND NAIL AND TIN TAGGED "LS 6394", FLUSH, PER R.S. 03-014, ACCEPTED AS POINT ON SECTION LINE.

EASEMENT NOTE

THERE EXISTS A NON-PLOTTABLE RIGHT OF WAY FOR DITCHES AND CANALS AS RESERVED IN PATENT RECORDED JULY 23, 1931 IN BOOK 746, PAGE 75, O.R.

THERE EXISTS AN EASEMENT FOR DRAINAGE, FLOWAGE AND WATER CONSERVATION PURPOSES RECORDED MARCH 23, 1960 IN BOOK 5090, PAGE 324, O.R. THIS EASEMENT IS NOT PLOTTED.



230/116