

314/45

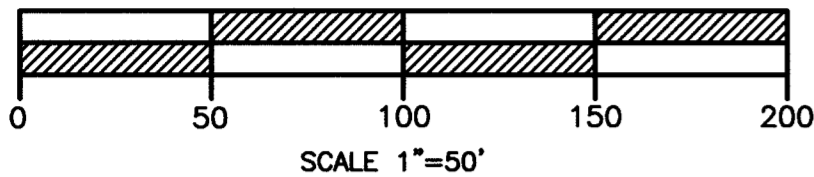
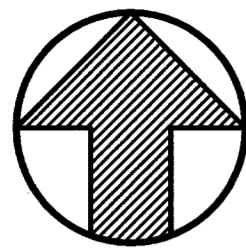
IN THE TOWN OF YUCCA VALLEY, COUNTY OF SAN BERNARDINO STATE OF CALIFORNIA

TRACT NO. 16957

BEING A SUBDIVISION OF PARCEL 2 OF PARCEL MAP NO. 11005 ON FILE IN BOOK 143, PAGES 24 AND 25 OF PARCEL MAPS, OFFICIAL RECORDS OF SAN BERNARDINO COUNTY, CALIFORNIA

FOMOTOR ENGINEERING

OCTOBER, 2004



FD. 1" I.P., FLUSH, NO TAG, PER PMB 143/24-25

FD. 2"x2" W/TAG R.C.E. 23256, UP 0.10', PER PMB 143/24-25

FD. 2"x2" W/TAG UNREADABLE, UP 0.10', PER PMB 143/24-25 SET TAG LS 7070

PARCEL 3
PARCEL MAP NO. 998
PMB 9/7

PARCEL 4
PARCEL MAP NO. 998
PMB 9/7

FD. 1" I.P. TAG UNREADABLE, DN. 0.1', PER MB 95/72-73, CSFB 564/64. N 1/16 COR. S10/S11

FD. 1" I.P., NO TAG, DN. 0.1', PER MB 95/72-73, CSFB 564/64 SET TAG LS 7070

FD. 1" I.P., NO TAG, DN. 0.1', PER MB 95/72-73, CSFB 564/64 SET TAG LS 7070

FD. 1" I.P., NO TAG, DN. 0.1', PER MB 95/72-73, CSFB 564/64 SET TAG LS 7070

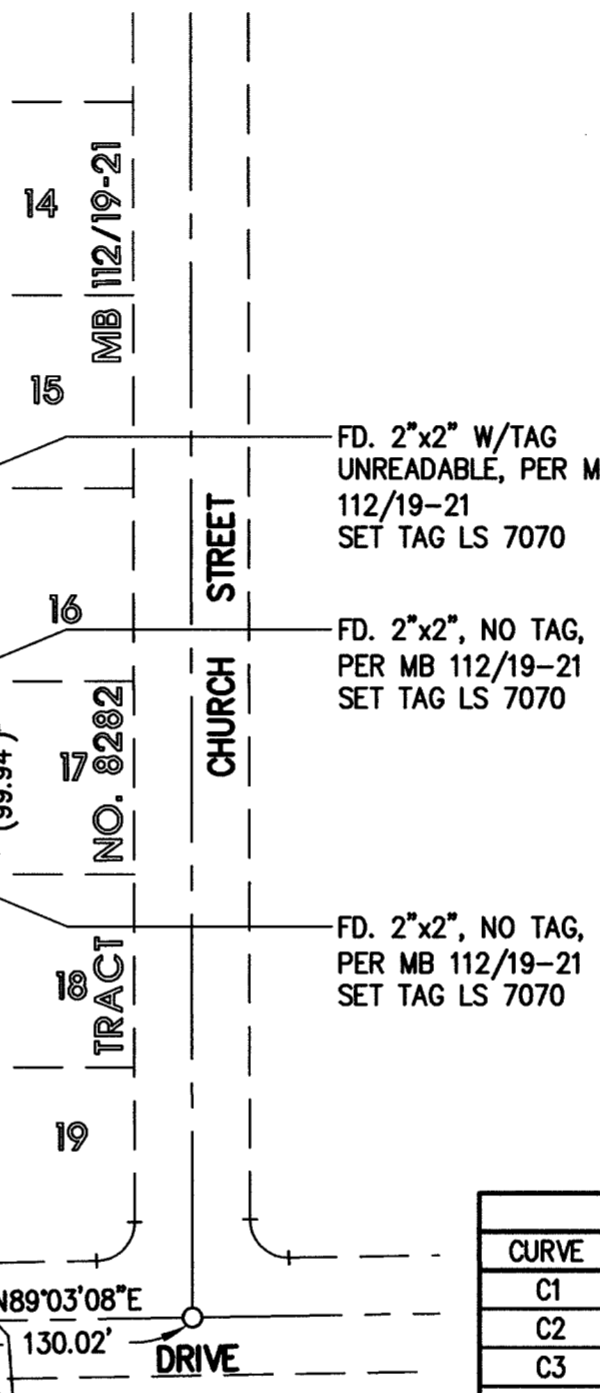
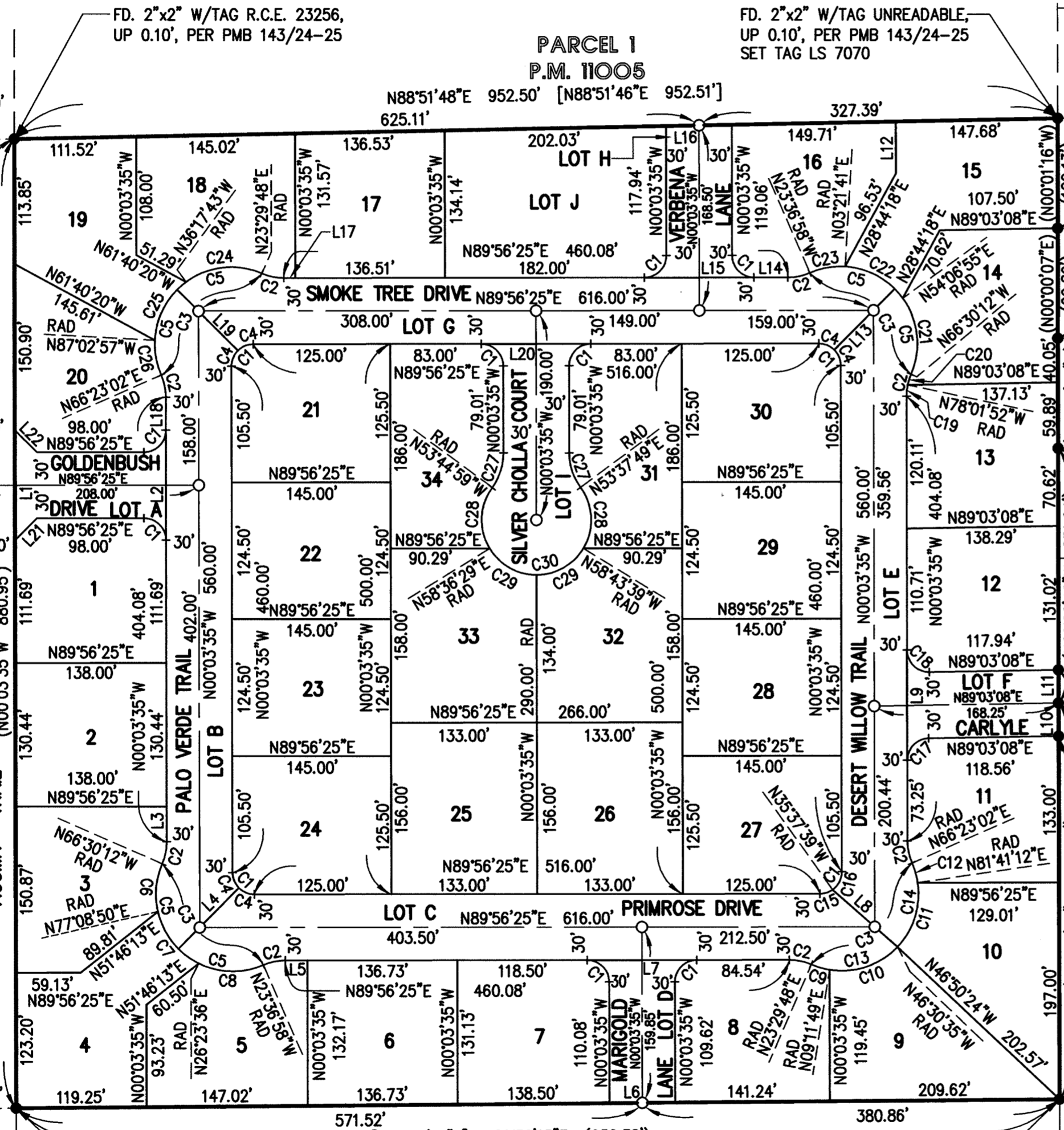
FD. 2"x2" W/TAG R.C.E. 23256, UP 0.10', PER PMB 143/24-25

FD. NOTHING, SET NOTHING

PARCEL 3
P.M. 11005

FD. 1" I.P. W/PLUG UNREADABLE, FLUSH IN LIEU OF 2"x2" W/TAG R.C.E. 23256 UP 0.10' PER PMB 143/24-25 SET TAG L.S. 7070

PORTION OF
NW 1/4, SEC. 11
INST. #2004-0907840
REC. 12/09/2004



SURVEYOR'S NOTES

- INDICATES FOUND MONUMENT AS NOTED
- INDICATES SET 3/4" I.D. GALVANIZED PIPE, 18" LONG, FLUSH, TAGGED LS 7070
- RAD: INDICATES "RADIAL BEARING"
- () INDICATES MEASURED AND RECORD DATA PER PARCEL MAP NO. 11005, PMB143/24-25
- [] INDICATES RECORD DATA PER PARCEL MAP NO. 11005, PMB143/24-25

SET NAIL AND TAG, STAMPED LS 7070, IN PERMANENT CONCRETE CURB AT THE PROLONGATION OF LOT CORNERS FRONTING ON STREETS.

AT ALL REAR LOT CORNERS, ANGLE POINTS, AND THE BEGINNING AND ENDS OF CURVES, SET 3/4" I.P. FLUSH, OR LEAD & TAG IN CONCRETE FOOTING OR FENCING MATERIAL, STAMPED LS 7070.

TOTAL ACREAGE WITHIN THE DISTINCTIVE BORDER IS 19.37 ACRES GROSS.

NUMBERED LOTS: 34
LETTERED LOTS: 10

BASIS OF BEARINGS

BASIS OF BEARINGS IS THE WEST LINE OF PARCEL 2 OF PARCEL MAP NO. 11005, PMB 143/24-25, BEING N00°03'35"W.

CURVE TABLE			
CURVE	DELTA	RADIUS	LENGTH
C1	90°00'00"	20.00'	31.42'
C2	23°33'23"	50.00'	20.56'
C3	137°06'46"	70.00'	167.52'
C4	45°00'00"	20.00'	15.71'
C5	68°33'23"	70.00'	83.76'
C6	36°20'58"	70.00'	44.41'
C7	50°45'14"	70.00'	62.01'
C8	50°00'34"	70.00'	61.10'
C9	141°7'59"	70.00'	17.47'
C10	55°42'24"	70.00'	68.06'
C11	51°48'13"	70.00'	63.29'
C12	15°18'10"	70.00'	18.70'
C13	70°00'23"	70.00'	85.53'
C14	67°06'23"	70.00'	81.99'
C15	35°34'04"	20.00'	12.42'
C16	54°25'56"	20.00'	19.00'
C17	89°06'43"	20.00'	31.11'
C18	90°53'17"	20.00'	31.73'
C19	12°01'43"	50.00'	10.50'
C20	11°31'40"	50.00'	10.06'
C21	59°22'53"	70.00'	72.55'
C22	50°45'14"	70.00'	62.01'
C23	26°58'39"	50.00'	32.96'
C24	59°47'31"	70.00'	73.05'
C25	50°45'14"	70.00'	62.01'
C26	26°34'01"	70.00'	32.46'
C27	36°18'36"	53.00'	33.59'
C28	67°38'32"	50.00'	59.03'
C29	58°40'04"	50.00'	51.20'
C30	252°37'12"	50.00'	220.45'

LINE TABLE		
LINE	BEARING	LENGTH
L1	N00°03'35"W	100.00'
L2	N00°03'35"W	100.00'
L3	N00°03'35"W	31.91'
L4	N44°56'25"E	78.28'
L5	N89°56'25"E	20.31'
L6	N89°30'15"E	60.00'
L7	N89°56'25"E	100.00'
L8	N48°44'18"W	78.69'
L9	N00°03'35"W	100.01'
L10	N00°04'47"W	30.01'
L11	N00°02'42"W	30.00'
L12	N00°03'35"W	47.41'
L13	N44°56'25"E (RAD)	78.28'
L14	N89°56'25"E	31.04'
L15	N89°56'25"E	100.00'
L16	N88°51'48"E	60.01'
L17	N89°56'25"E	10.53'
L18	N00°03'35"W	30.04'
L19	N45°03'35"W (RAD)	78.28'
L20	N89°56'25"E	100.00'
L21	N44°56'25"E	28.28'
L22	N45°03'35"W	28.28'

LETTER LOT AREAS			
LOT	AREA (AC.)	LOT	AREA (AC.)
A	0.198	F	0.194
B	0.791	G	0.868
C	0.866	H	0.195
D	0.183	I	0.342
E	0.792	J	0.629

314/45