

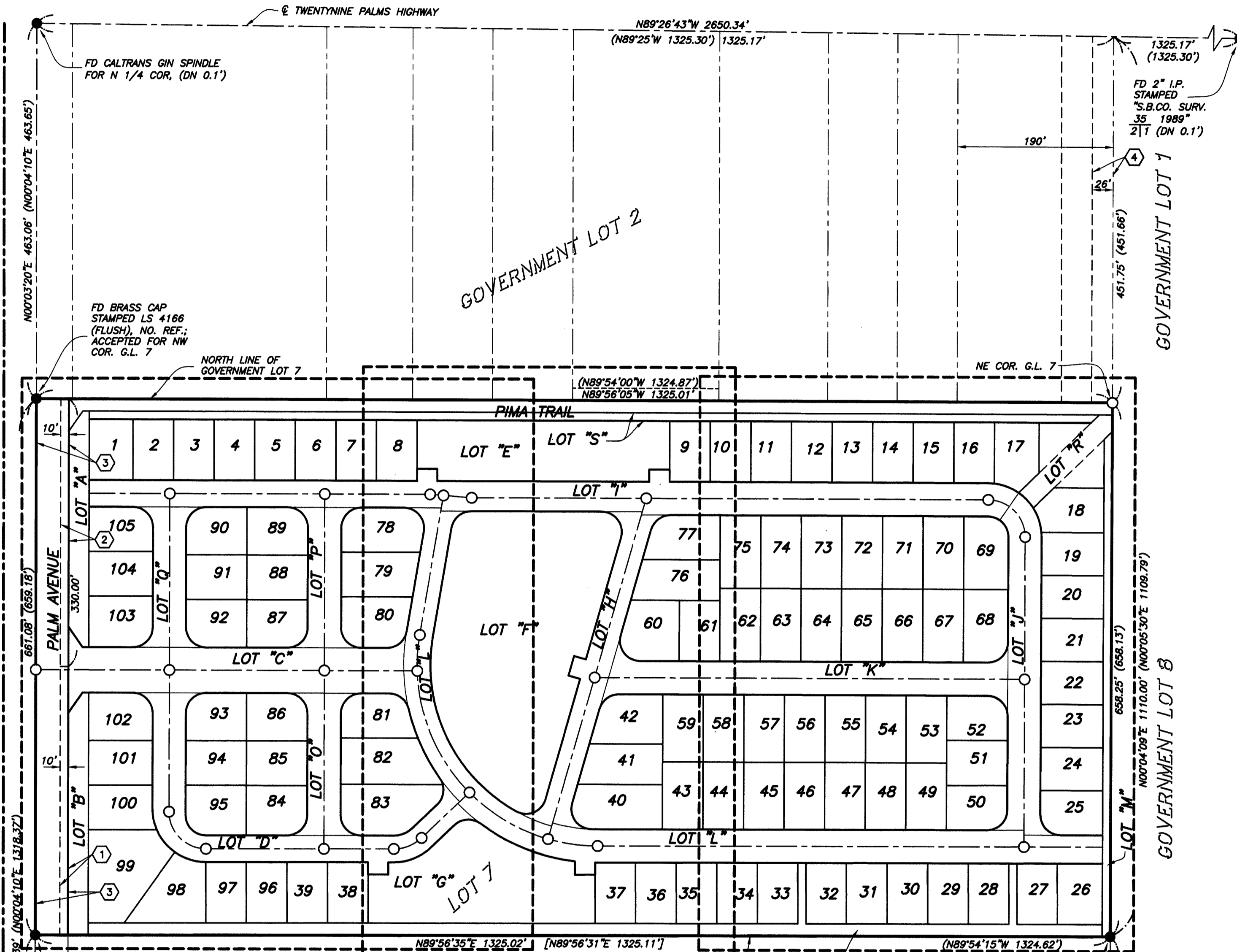
TRACT MAP NO. 16471

IN THE TOWN OF YUCCA VALLEY,
COUNTY OF SAN BERNARDINO, STATE OF CALIFORNIA
BEING A SUBDIVISION OF A PORTION OF GOVERNMENT LOT 7 OF THE NORTHEAST
QUARTER SECTION 2, TOWNSHIP 1 SOUTH, RANGE 6 EAST, S.B.B. & M.

BOUNDARY PLAT
AND INDEX SHEET

Warner engineering YUCCA VALLEY, CA
CIVIL ENGINEERING / PLANNING / LAND SURVEYING MAY 2005

THIS MAP HAS 105 LOTS



SEE SHEET 3 SEE SHEET 4 SEE SHEET 5

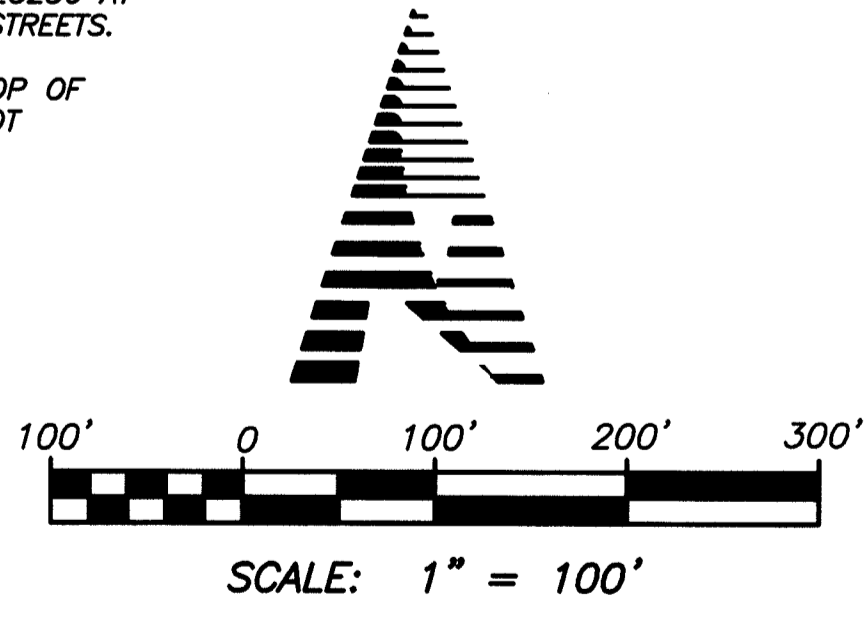
MONUMENT NOTES:

SET 2"x2" REDWOOD HUB, 18" LONG, TAGGED RCE 23256 AT ALL REAR LOT CORNERS, EXCEPT THOSE ABUTTING STREETS.

SET LEAD, TACK & TAG, STAMPED RCE 23256, IN TOP OF CURB ON EXTENSION OF PROPERTY LINES WHERE LOT CORNERS ABUT STREETS.

EASEMENT DATA

- ① 10-FOOT WIDE EASEMENT IN FAVOR OF GENERAL TELEPHONE COMPANY OF CALIFORNIA FOR UNDERGROUND CONDUITS AND APPURTENANCES PURPOSES PER 8174/852 O.R.
- ② 10-FOOT WIDE EASEMENT IN FAVOR OF GENERAL TELEPHONE COMPANY OF CALIFORNIA FOR UNDERGROUND CONDUITS AND APPURTENANCES PURPOSES PER 8185/709 O.R.
- ③ 40-FOOT WIDE EASEMENT IN FAVOR OF TOWN OF YUCCA VALLEY FOR HIGHWAY AND PUBLIC UTILITY PURPOSES PER DOCUMENT NO. 94-022529 O.R. RECORDED JANUARY 19, 1994.
- ④ 26-FOOT WIDE EASEMENT IN FAVOR OF DESERT VISTA ESTATES, LLC FOR EMERGENCY INGRESS AND EGRESS PURPOSES PER DOCUMENT NO. 2004-0243714 O.R.



TRACT NO. 8377
MB 116/10-17

BASIS OF BEARINGS

THE BASIS FOR BEARINGS SHOWN HEREON IS THE WEST LINE OF GOVERNMENT LOT 7 PER TRACT NO. 8377, MB 116/10-17, BEING N0°04'10"E

SW COR. G.L. 7
FD 2" I.P. TAGGED LS
3069 PER R.S. 28/33

COMPOSITE DEVELOPMENT PLAN NOTE

A COMPOSITE DEVELOPMENT PLAN (C.D.P.) AFFECTING THIS MAP IS ON FILE IN THE TOWN OF YUCCA VALLEY DEPARTMENT OF BUILDING AND SAFETY.

LEGEND

- ◆ INDICATES MONUMENT FOUND AS NOTED
- ⊕ INDICATES SET 1" IRON PIPE, 18" LONG, TAGGED RCE 23256, FLUSH
- [-] RECORD DATA PER TRACT NO. 8377, MB 116/10-17
- (-) RECORD DATA PER R.S. 5/5
- P.U.E. INDICATES PUBLIC UTILITY EASEMENT
- P.D.E. INDICATES PRIVATE DRAINAGE EASEMENT
- ① INDICATES EASEMENT DATA REFERENCE NUMBER

SE COR. G.L. 7
FD 1" I.P. TAGGED
RCE 23256 PER
MB 116/10-17

322/34

322/34