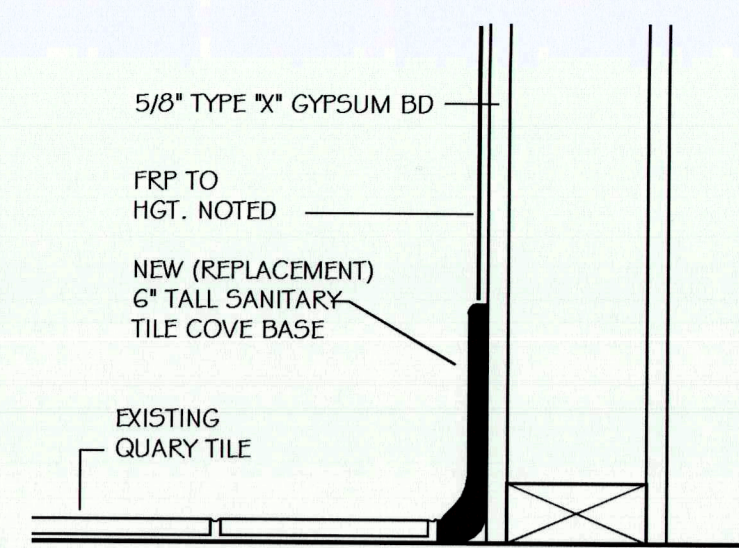
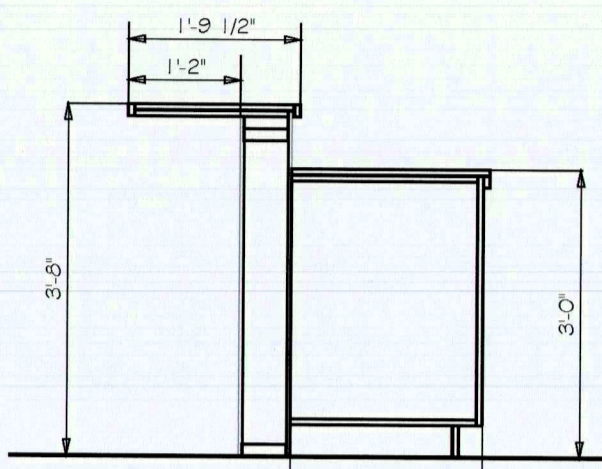


EQUIPMENT SCHEDULE

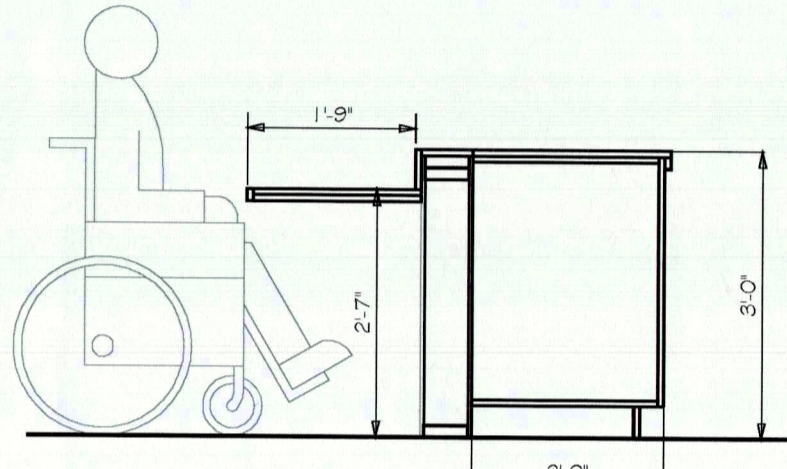
SYMBOL	QTY	DESCRIPTION	MANUFACTURER	MODEL#	ELEC REQUIREMENTS	PLUMBING REQUIREMENTS
(1)	17	MODULAR SHELVING UNITS (VARIOUS SIZES)	EAGLE	S4-63-18"	---	---
(2)	1	3 COMP BACK BAR SINK	KROWNE	KR24-63C	---	1/2" HOT, 1/2" COLD, 2" DRAIN TO FLOOR SINK
(3)	1	HAND SINK	EAGLE	SR14-10-5-1	---	1/2" HOT, 1/2" COLD, 1-1/2" DRAIN
(4)	1	ICE MACHINE	SCOTTSMAN	8330P	115/60/1 15 AMPS	1" DRAIN TO FS
(5)	1	REACH IN FREEZER	TRUE	T-19FZ	115/60/1 6.8 AMPS	SELF CONTAINED
(6)	1	REACH IN FREEZER	TRUE	T-19FZ	115/60/1 6.8 AMPS	SELF CONTAINED
(7)	3	3 COMPARTMENT SINK W/ 2 DRAINBOARDS	EAGLE	S314-16-3-24	---	1/2" HOT, 1/2" COLD, 1-1/2" DRAIN TO FS
(8)	2	FLOOR SINK	ZURN	FD2375-NH-2"	---	2" DRAIN
(9)	1	PREP SINK W/ 2 DRAINBOARDS	EAGLE	414-18-1-18	---	1/2" HOT, 1/2" COLD, 1-1/2" DRAIN TO FS
(10)	1	STAINLESS STEEL WORK TABLE	VARIES, SEE PLAN	---	---	---
(11)	1	HAND SINK	EAGLE	HSA-10-FOOP	---	1/2" HOT, 1/2" COLD, 1-1/2" DRAIN
(12)	1	SANDWICH PREP TABLE	ATOSA	HSA-10-MSFR3036R	115/60/1 1/5 HP	---
(13)	1	TYPE I HOOD BY CAPTIVE AIR	CAPTIVE AIR	---	SPEC BY OTHERS	SPEC BY OTHERS
(14)	4	INDUCTION RANGE	WINCO	EIC-400E	120/60/1 1800 WATTS x 4	---
(15)	1	GRIDDLE	IMPERIAL	IT6-60-E	208/60/3 35 AMP, 30 AMP	---
(16)	1	FRYER	DEAN	SR14E	208/60/3 40 AMP	---
(17)	1	AIR CURTAIN	MARS	STD242	115V, 5.1 AMPS	---
(18)	1	CUSTOM WALK IN COOLER	BY OTHERS	CUSTOM	---	---
(19)	1	MOP SINK	EAGLE	FI916-12	---	1/2" HOT, 1/2" COLD, 2" DRAIN
(20)	1	WATER HEATER	AO SMITH	BTX-100 50 GAL	---	3/4" HOT, 3/4" COLD, 1" TO OUTSIDE, 100,000 BTU's



Cove Base Detail
Scale: 1" = 1'-0"



Bar Section
Scale: 1" = 1'-0"



ADA Counter Detail
Scale: 1" = 1'-0"

FINISH SCHEDULE:

ROOM DESCRIPTION	FLOORS	CEILINGS	WALLS
DINING ROOM	SEALED CONCRETE	SMOOTH FINISH DRYWALL W/ GLOSS PAINT	SATIN PAINT
BAR AREA	QUARRY TILE WITH TILE COVE BASE	SMOOTH FINISH DRYWALL W/ GLOSS PAINT	SMOOTH FINISH DRYWALL W/ GLOSS PAINT ABOVE
COOKING	QUARRY TILE WITH TILE COVE BASE	SMOOTH FINISH DRYWALL W/ GLOSS PAINT	FRP TO 8' HIGH, SMOOTH FINISH DRYWALL W/ GLOSS PAINT ABOVE
LOCKED LIQUOR STORAGE	QUARRY TILE WITH TILE COVE BASE	SMOOTH FINISH DRYWALL W/ GLOSS PAINT	SMOOTH FINISH DRYWALL W/ GLOSS PAINT
PREP AREA	QUARRY TILE WITH TILE COVE BASE	SMOOTH FINISH DRYWALL W/ GLOSS PAINT	FRP TO 8' HIGH, SMOOTH FINISH DRYWALL W/ GLOSS PAINT ABOVE
DRY STORAGE	QUARRY TILE WITH TILE COVE BASE	SMOOTH FINISH DRYWALL W/ GLOSS PAINT	SMOOTH FINISH DRYWALL WITH GLOSS PAINT
OFFICE	SEALED CONCRETE	SMOOTH FINISH DRYWALL W/ GLOSS PAINT	SMOOTH FINISH DRYWALL WITH GLOSS PAINT
MENS ROOM	CERAMIC TILE WITH COVE BASE	SMOOTH FINISH DRYWALL W/ GLOSS PAINT	FRP TO 4' HIGH, SMOOTH FINISH DRYWALL W/ GLOSS PAINT ABOVE
WOMENS ROOM	CERAMIC TILE WITH COVE BASE	SMOOTH FINISH DRYWALL W/ GLOSS PAINT	FRP TO 4' HIGH, SMOOTH FINISH DRYWALL W/ GLOSS PAINT ABOVE
CLEANING AREA	APPROVED EPOXY FLOOR W/ SLIM FOOT TILE COVE BASE	SMOOTH FINISH DRYWALL W/ GLOSS PAINT	FRP TO 8' HIGH, SMOOTH FINISH DRYWALL W/ GLOSS PAINT ABOVE

FINISHES NOTES:

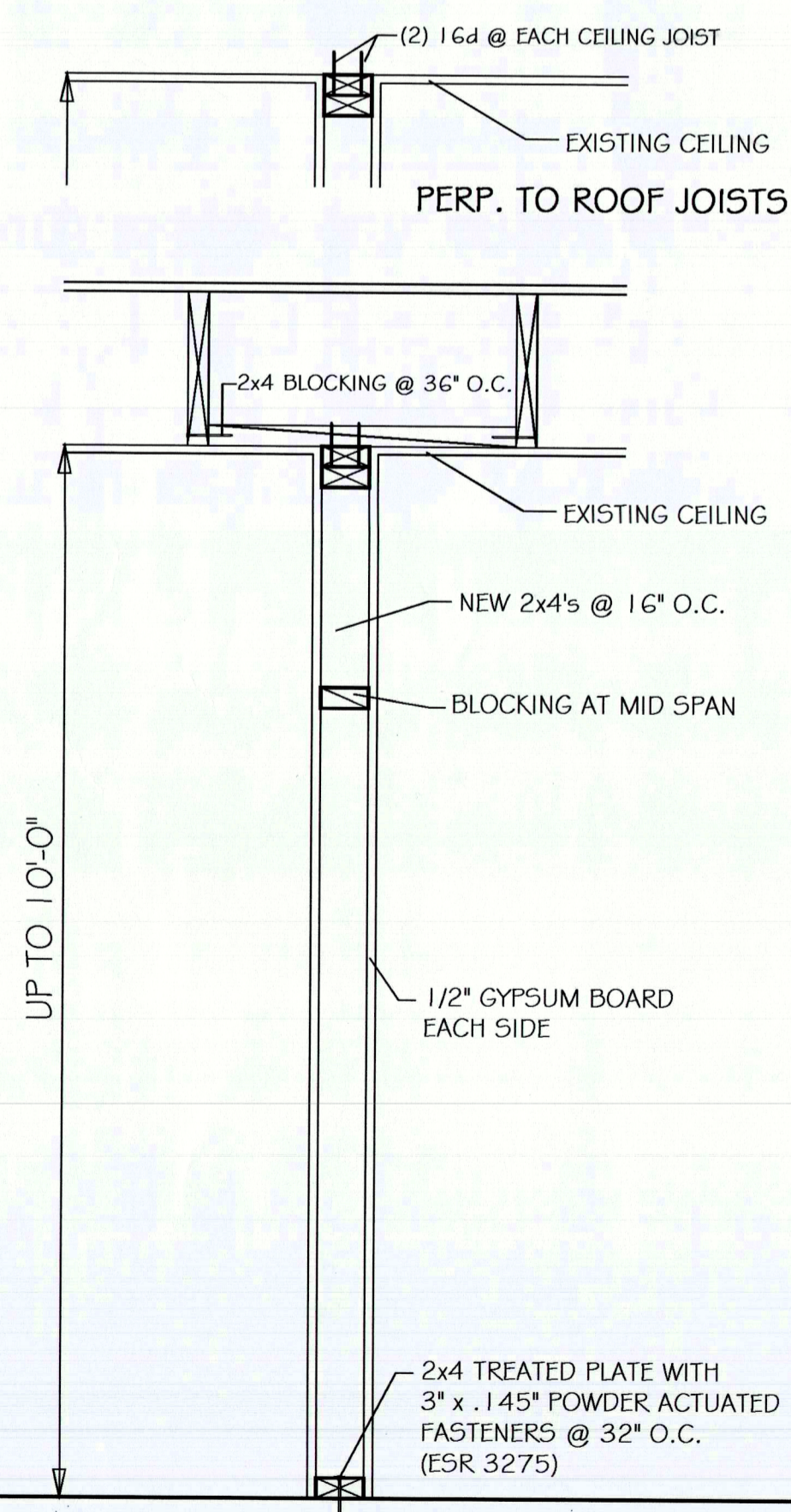
STANDARDS FOR PAINT:
A. LIGHT COLORED PAINTS ONLY
B. GLOSS OR SEMI-GLOSS
C. LEAD-FREE

APPLICATION OF PAINT:
A. APPLIED TO SMOOTH SURFACE SUCH AS DRYWALL
B. DO NOT "TEXTURE" WALLS
C. PAINT WILL NOT PROVIDE AN ACCEPTABLE SURFACE TO FOOD CONTACT AREAS
D. PAINT ALONE IS NOT ACCEPTABLE FOR HIGH MOISTURE OR WEAR AREAS.

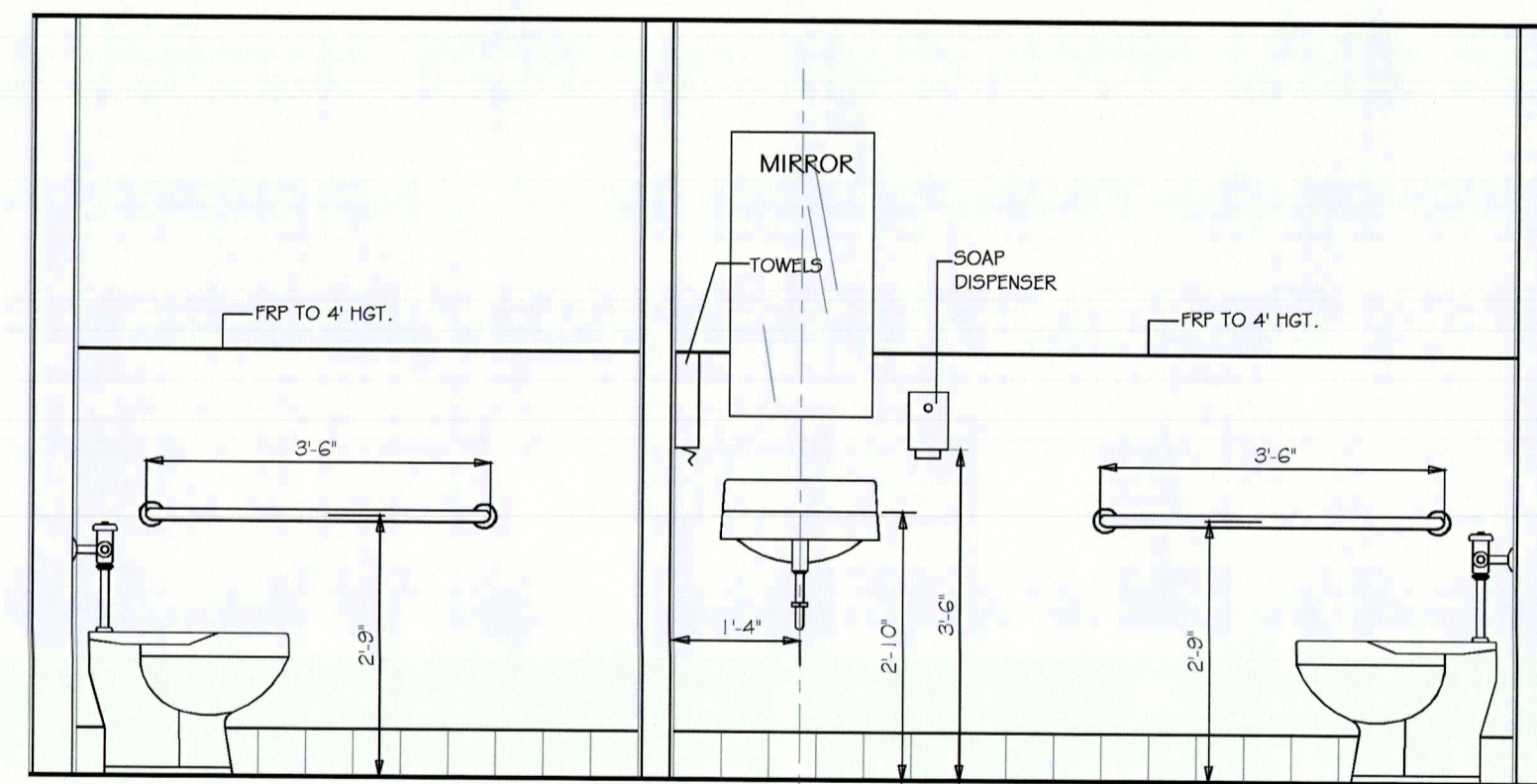
STANDARDS FOR WALL PANELS (FRP):
A. LIGHT COLORED
B. DURABLE WEAR LAYER
C. SMOOTH NON-GROVED, CLEANABLE SURFACE

STANDARDS FOR CONCRETE SEALERS:

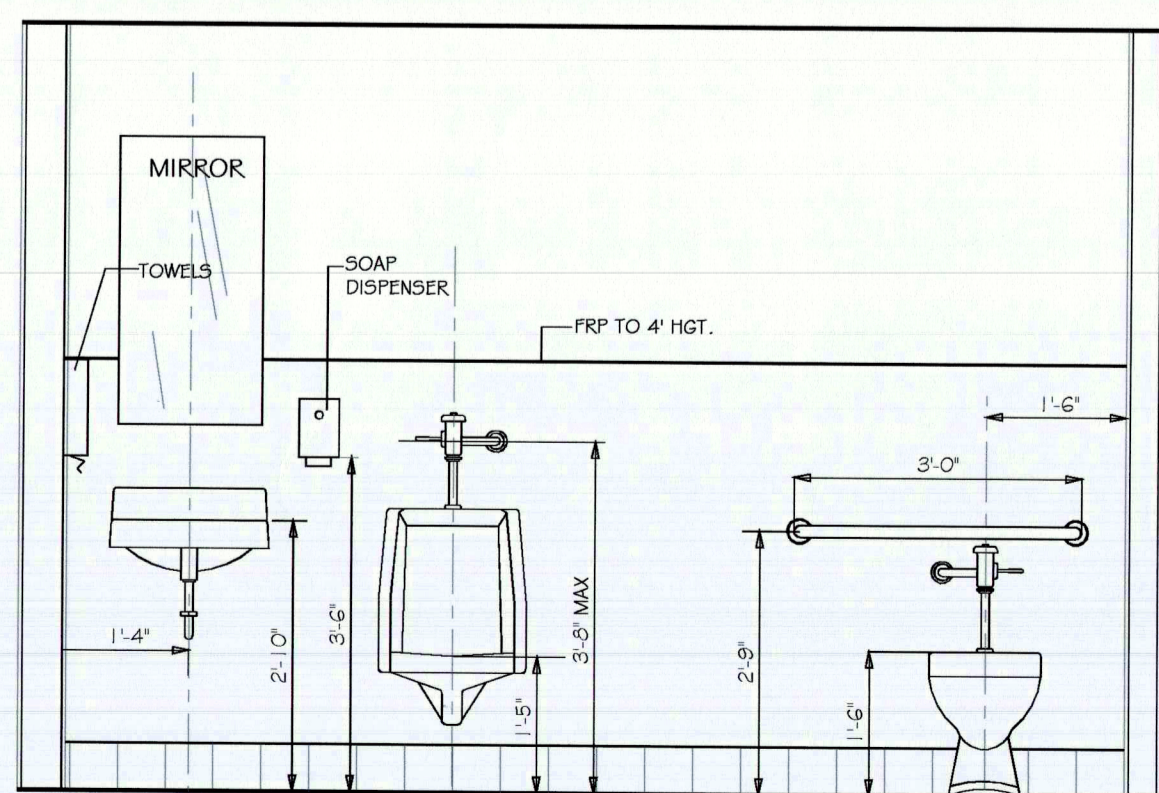
ALL CONCRETE SEALERS SHALL BE OFF OF THE CURRENT APPROVED LIST AS PROVIDED BY THE DEPT. OF ENVIRONMENTAL HEALTH.



Wall Framing Detail
Scale: 1" = 1'-0"



Restroom Fixture Elevation Plan
Scale: 1/2" = 1'-0"

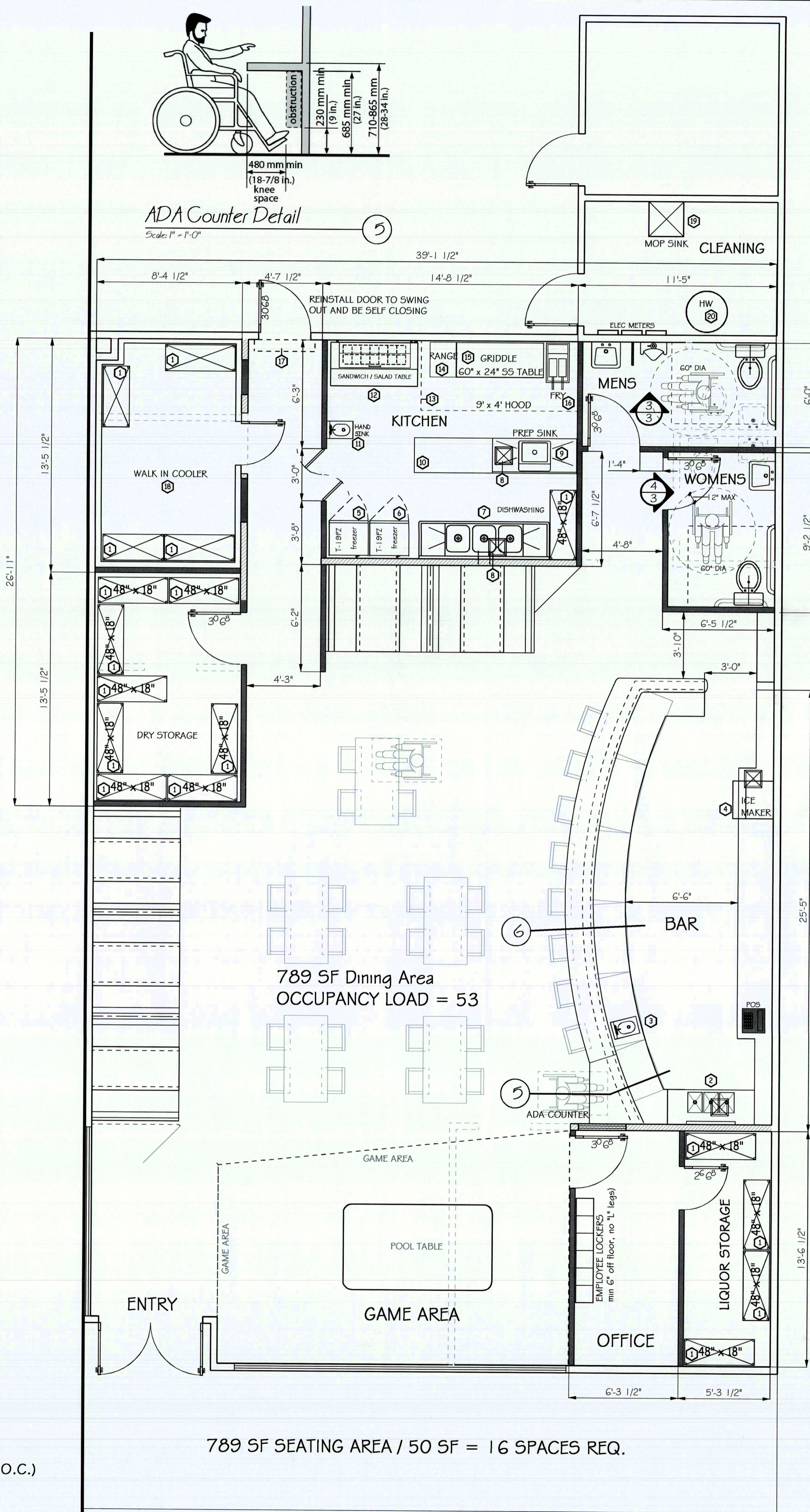


Restroom Fixture Elevation Plan
Scale: 1/2" = 1'-0"

789 SF DINING ROOM
402 SF KITCHEN AND STORAGE AREA
156 SF OFFICE AND LIQUOR STORAGE
939 SF WAITING, RESTROOMS, HALL AND BACK BAR

2286 SF TOTAL CONDITIONED AREA

--- WALLS TO BE REMOVED
--- PROPOSED NEW WALLS (2x4's @ 16" O.C.)
--- EXISTING WALLS TO REMAIN



Floor Plan

Revisions By

Restaurant Tenant Improvement For:

The Tiny Pony
57205 29 PALMS HWY
YUCCA VALLEY, CA 92284-2929
APN: 0595-162-02-0000

DESIGN CONCEPTS

DRAFTING AND DESIGN SERVICE
57445 29 Palms Hwy., Suite 304
Yucca Valley, CA 92284
Phone (760) 365-8742 - Fax (760) 365-8742
Email: design.online@venzon.net

DRAWN BY BRIAN T. DIEBOLT

DATE 1/22/2021

SCALE 1/4" = 1'

JOB NUMBER The Tiny Pony

SHEET #

3

OF 3 SHEETS