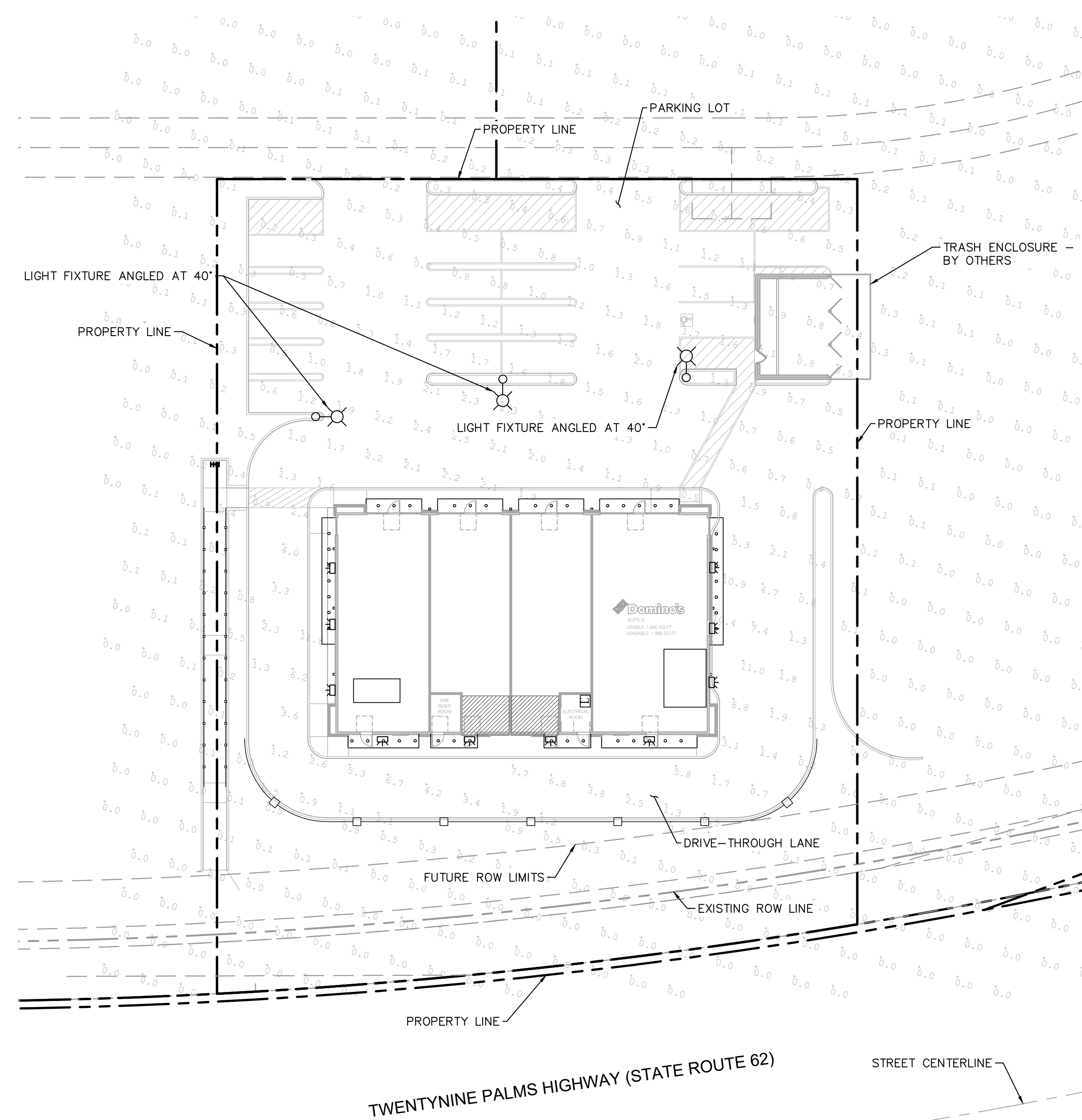


Drawing name: K:\RIV\_LDEV\195236001\_Dominos Yucca Valley\CADD\Exhibits\CJP\_Submit\3.0 - Prelim Lighting Plan.dwg Layout1 Jan 11, 2022 6:24pm by Lami.Negrillo



PHOTOMETRIC ANALYSIS				
DESCRIPTION	CALCULATED VALUES (ILLUMINANCE)			
	$E_{avg}(fc)$	$E_{min}(fc)$	$E_{max}(fc)$	UNIFORMITY RATIO ( $E_{max}/E_{min}$ )
PARKING LOT	1.10	0.2	2.5	12.50
DRIVE-THROUGH LANE*	3.49	0.2	11.8	59.00

\*RECOMMENDATIONS BELOW DO NOT APPLY TO DRIVE-THROUGH LANE.

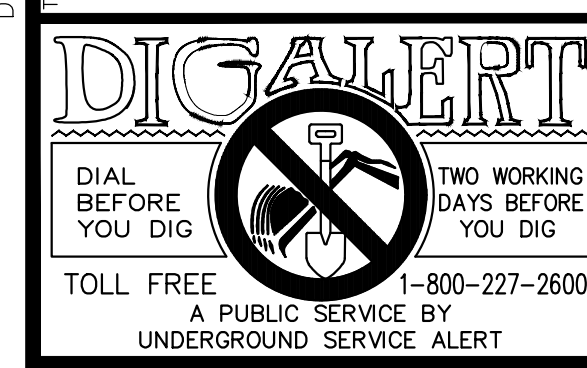
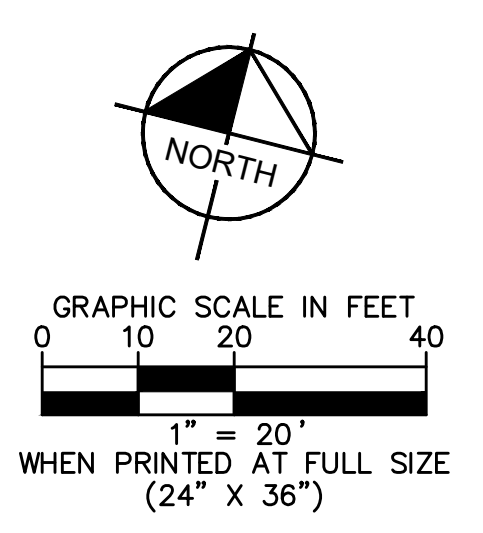
IES RECOMMENDED MAINTAINED ILLUMINANCE VALUES FOR PARKING LOTS*		
DESCRIPTION	$E_{min}(fc)$	MAX UNIFORMITY RATIO ( $E_{max}/E_{min}$ )
PARKING LOT	0.5**	15:1 (15.0)

\*PER TABLE 17-2, HORIZONTAL TARGETS, R4 (ASPHALT) SURFACES, LZ4, LZ3, LZ2, AND LZ1, PRE-CURFEW; "RECOMMENDED PRACTICE FOR DESIGN AND MAINTENANCE OF ROADWAY AND PARKING FACILITY LIGHTING" (ANSI/IES RP-8-18)  
 \*\*5 lux = 0.5 fc, PER 17.3.2.1

**LEGEND:**

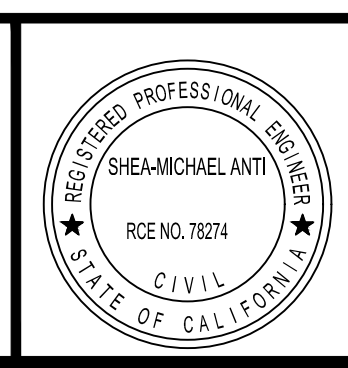
- PROPOSED LUMINAIRE ON POLE
- PROPOSED LUMINAIRE ON BUILDING WALL
- CALCULATION POINT (FOOTCANDLES)

LIGHTING FIXTURE SCHEDULE								
LEGEND	DESCRIPTION	MOUNTING HEIGHT	LOCATION	IES FILENAME	LUMENS	SYSTEM WATTS	DISTRIBUTION TYPE	CCT
	GE EVOLVE LED AREA (EALS)	30'	PARKING LOT	EALS03_C3AW740_IES	7500	50 W LED	3	3000K
	GE EVOLVE LED SCALABLE WALL PACK (EWS3)	8.5'	DRIVE-THROUGH AISLE	EWS3_B7D130_120-277V.IES	3700	32 W LED	3	3000K



ISSUE	DATE	DESCRIPTION

MB  
 DRAWN BY  
 BH  
 CHECKED BY  
 SA  
 RECOMMENDED



**Kimley»Horn**  
 3880 LEMON STREET, SUITE 420  
 RIVERSIDE, CA 92501  
 (951) 543-9868  
 PREPARED UNDER THE DIRECT SUPERVISION OF:  
 SHEE-MICHAEL ANTI, R.C.E. NO. 78274

CITY OF YUCCA VALLEY  
 APPROVED BY:  
 CITY ENGINEER  
 RCE # \_\_\_\_\_ EXP \_\_\_\_\_ DATE \_\_\_\_\_



CITY OF YUCCA VALLEY  
**PRELIMINARY LIGHTING PLAN**

C3.0