

**CHARGING POST
CIRCUIT SCHEDULE**

SUPERCHARGER	CHARGE POST	SIGNAGE
①	1A	DEDICATED
	1B	DEDICATED
	1C	DEDICATED
	1D	DEDICATED
②	2A	DEDICATED
	2B	DEDICATED
	2C	DEDICATED
	2D	DEDICATED
③	3A	DEDICATED
	3B	DEDICATED
	3C	DEDICATED
	3D	DEDICATED
④	4A	DEDICATED
	4B	DEDICATED
	4C	DEDICATED
	4D	DEDICATED

PARKING STALL SCHEDULE

DESCRIPTION	QUANTITY
EXISTING STANDARD STALL UTILIZED AS A RESULT OF THIS PROJECT	18
PROPOSED TESLA STALLS	16
PROPOSED STANDARD STALLS	0
NET STALL COUNT	-2
NET EV STALL COUNT*	-1

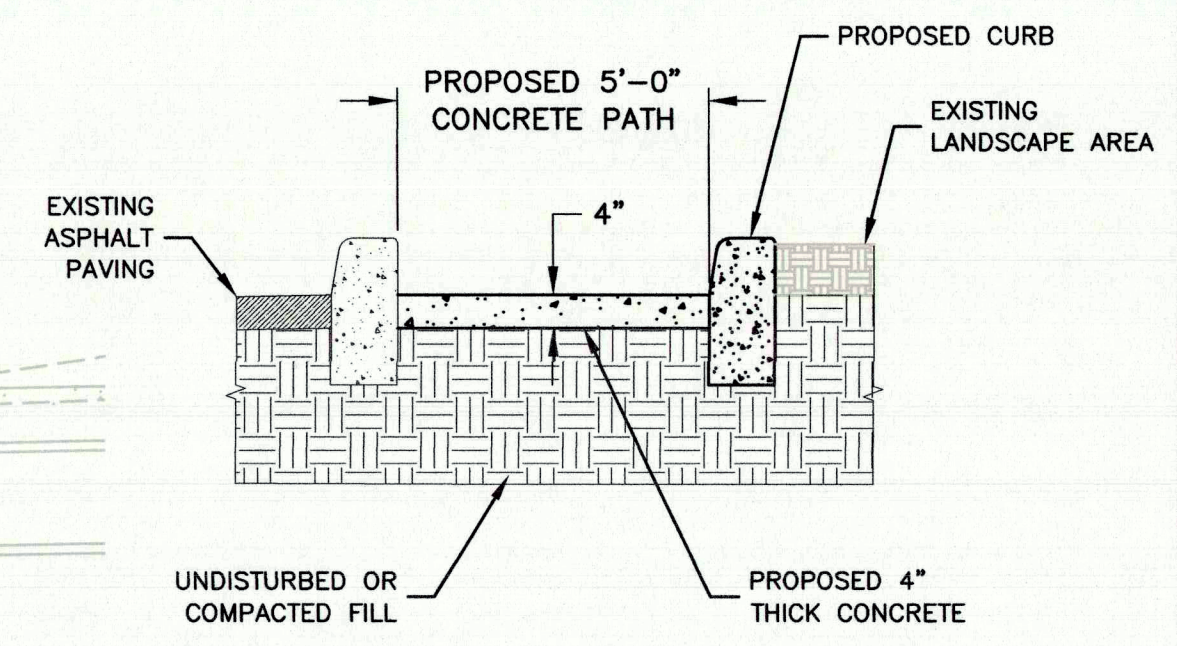
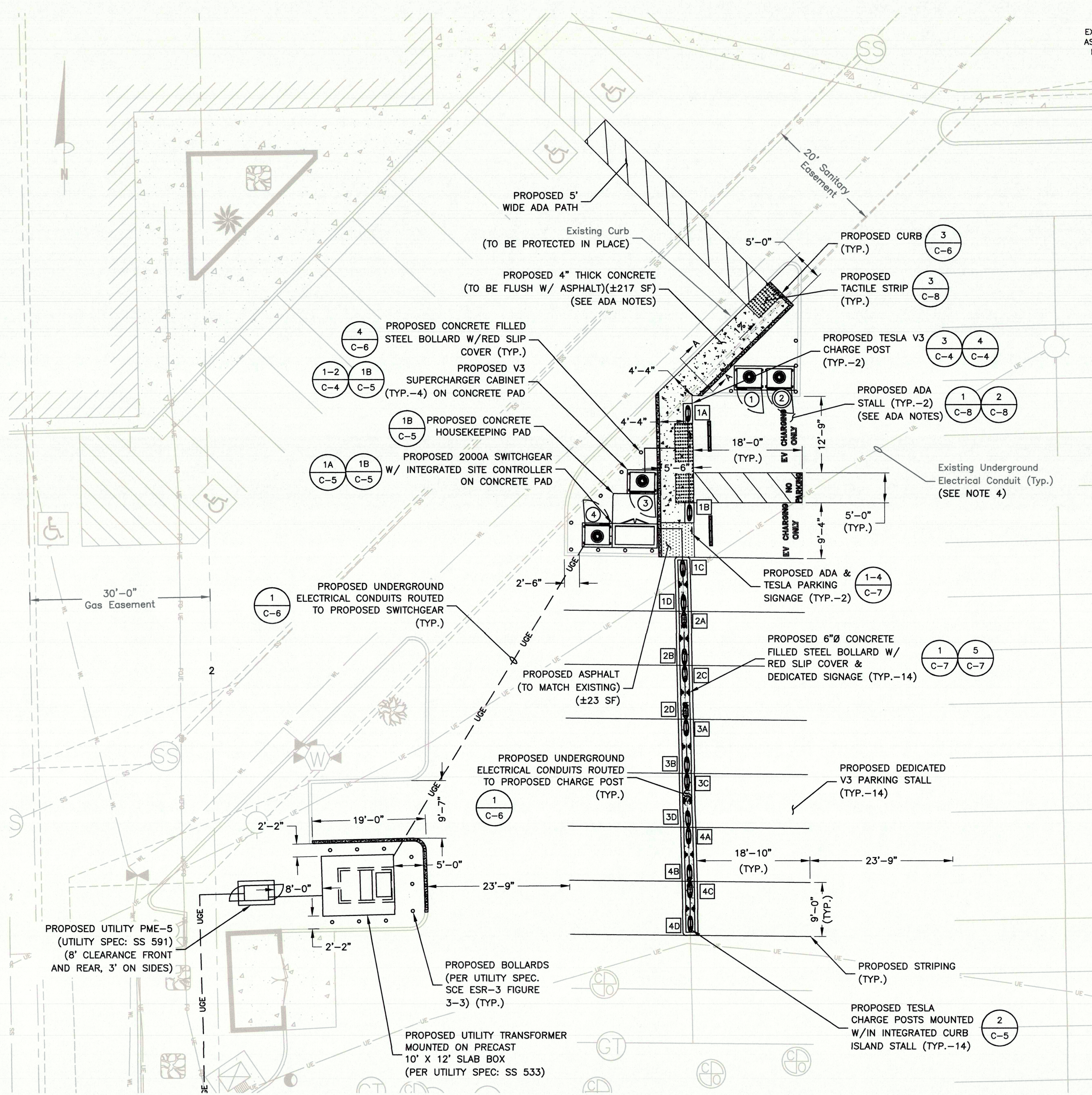
* SEE ADA NOTE 3.

ADA NOTES:

- CONTRACTOR TO VERIFY THAT ADA STALL SURFACE SLOPES DO NOT EXCEED 2% IN ALL DIRECTIONS
- ADA PATH SHALL NOT EXCEED 5% IN DIRECTION OF TRAVEL AND 2% CROSS-SLOPE.
- CONTRACTOR TO GRADE ADA AREA AS NECESSARY
- ACCORDING TO ASSEMBLY BILL 1100, SEC. 2, 22511.2. (b) AN ACCESSIBLE PARKING SPACE WITH AN ACCESS AISLE SERVED BY ELECTRIC VEHICLE SUPPLY EQUIPMENT OR AN ACCESSIBLE PARKING SPACE WITH AN AISLE DESIGNATED AS A FUTURE ELECTRIC VEHICLE CHARGING SPACE SHALL COUNT AS AT LEAST TWO STANDARD AUTOMOBILE PARKING SPACES FOR THE PURPOSE OF COMPLYING WITH ANY APPLICABLE MINIMUM PARKING SPACE REQUIREMENTS ESTABLISHED BY LOCAL JURISDICTION.

NOTES:

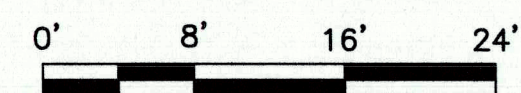
- SITE PLAN BASED ON ENGINEERING DESIGN OF PARCEL 1, VOLUME 23 OF MAPS AND SURVEYS (PAGE 45) OF THE OFFICIAL RECORDS OF SAN BERNARDINO COUNTY, CALIFORNIA BY CLARK LAND SURVEYING, INC DATED 07/16/2021.
- UTILITY CONNECTION TO BE MADE UNDER SOUTHERN CALIFORNIA EDISON STANDARDS, CONFIRM FINAL DESIGN PRIOR TO CONSTRUCTION, SCE WORK ORDER TBD.
- EXISTING UNDERGROUND UTILITIES LOCATED WITHIN AREA OF PROPOSED TRENCH & EQUIPMENT SITE AREA. HAND DIG AND RELOCATE AS REQUIRED.
- EXISTING CUSTOMER OWNED ELECTRICAL CONDUIT TO BE RELOCATED AS NEEDED DURING CONSTRUCTION.
- EXISTING STORM DRAIN INLETS TO BE COVERED WITH SILT BAG.
- CONTRACTOR TO LOCATE NATURAL GAS PIPING PRIOR TO CONSTRUCTION. ALL PROPOSED ELECTRICAL CONDUITS & ELECTRICAL EQUIPMENT TO BE KEPT A MINIMUM OF 24" FROM GAS LINE.



SECTION A-A
SCALE: NTS

EQUIPMENT & PARKING PLAN

SCALE: 3/64"=1' FOR 11"x17"
3/32"=1' FOR 22"x34"



LEGEND

①	TESLA SUPERCHARGER #
①A	'STAR-CENTER' MASTER CABINET #
1A	TESLA V3 CHARGE POST

3500 DEER CREEK ROAD
PALO ALTO, CA 94304
(650) 681-5000

Dewberry Engineers Inc.
100 OCEANGATE
SUITE 400
LONG BEACH, CA 90802
PHONE: 562.350.0570

DRAWN BY: ZAP
CHECKED BY: SES
APPROVED BY: TB
PROJECT #: 50123704
JOB #: 50138552

SUBMITTALS

REV.	DATE	DESCRIPTION
B	09/02/21	REVISED PER COMMENTS
A	08/12/21	ISSUED FOR 90% DESIGN

SITE NAME:
YUCCA VALLEY, CA
(TRT: 18883)
SITE ADDRESS:
57220 TWENTYNINE PALMS HWY SUITE EV
YUCCA VALLEY, CA 92832

SHEET TITLE
**EQUIPMENT
& PARKING PLAN**
SHEET NUMBER
C-3