

**PROJECT DESCRIPTION:**

THIS PROJECT CONSISTS OF COMPLETING THE REMAINING 64 LOTS OF THE 196 LOTS PLUS 1 COMMON AREA LOT OF TRACT NO. 8377, APPROVED BY THE COUNTY OF SAN BERNARDINO AND THE MAP OF SAID APPROVAL WAS RECORDED ON SEPTEMBER 8, 1972.

THE PROPERTY OWNER WILL BE COMPLETING THE ON SITE WORK TO PROVIDE THE FINAL 64 LOTS WITH THE PROPER GRADING, INTERIOR STREETS, AND UTILITY SERVICES AS TO BE ABLE TO INSTALL 64 NEW MOBILEHOMES ON THE APPROVED TRACT LOTS. THESE NEW LOTS ARE ALL PART OF THE EXISTING GATES OF SPAIN MOBILEHOME PARK AND WILL HAVE ACCESS TO THE CLUB HOUSE, POOL AND ANY OTHER FACILITIES WITHIN THE MOBILEHOME PARK.

THE PROPOSED HOMES TO BE PLACED ON THE LOTS ARE FROM THE SILVERCREST KINGSBROOK SERIES, AND THE HOMES SELECTED WILL BE ONES BEST FITTING THE LOT SIZE AND GRADING.

THE OWNER HAS AUTHORIZED A TREE CENSUS BY A CERTIFIED ARBORIST MARK HAGEN TO IDENTIFY THE WESTERN JOSHUA TREES AND MAKE RECOMMENDATIONS REGARDING RELOCATION OR REMOVAL OF THE TREES ON SITE.

THESE 64 LOTS AND THE COMMON LOT ARE THE ONLY PORTION OF THE PROJECT WE ARE SUBMITTING TO THE CITY OF YUCCA VALLEY. AT SOME TIME IN THE FUTURE, WE WILL BE SUBMITTING A TENTATIVE TRACT MAP FOR THE DEVELOPMENT OF THE SOUTH PORTION OF OUR CLIENTS PROPERTY TO POTENTIALLY ADD 45+ ADDITIONAL LOTS PLUS ANOTHER COMMON LOT TO THE GATES OF SPAIN DEVELOPMENT.

Town of Yucca Valley  
 Tax Rate Area  
 23000

Ptn. Tract No. 8377, M.B. 116/10-17  
 A Planned Unit Development

0587-39

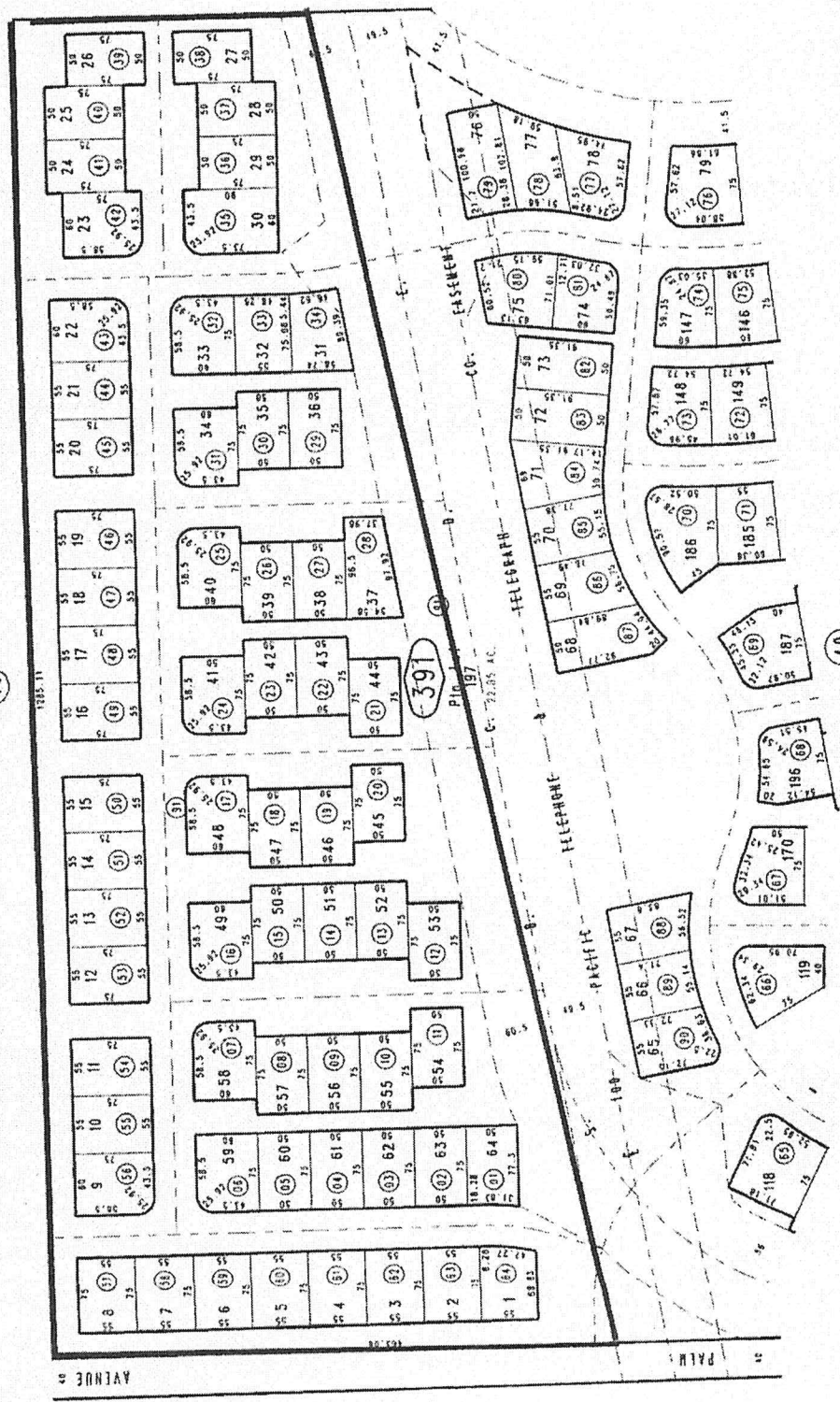
THIS MAP IS FOR THE PURPOSE  
 OF AD VALOREM TAXATION ONLY



43

391

40



REVISED  
 10/17/06 CW

Assessor's Map  
 Book 0587 Page 39  
 San Bernardino County

Ptn. N.E.1/4, Sec. 2  
 T.1S., R.5E.

February 2005