

EAST ELEVATION (MAIN ENTRY)

1



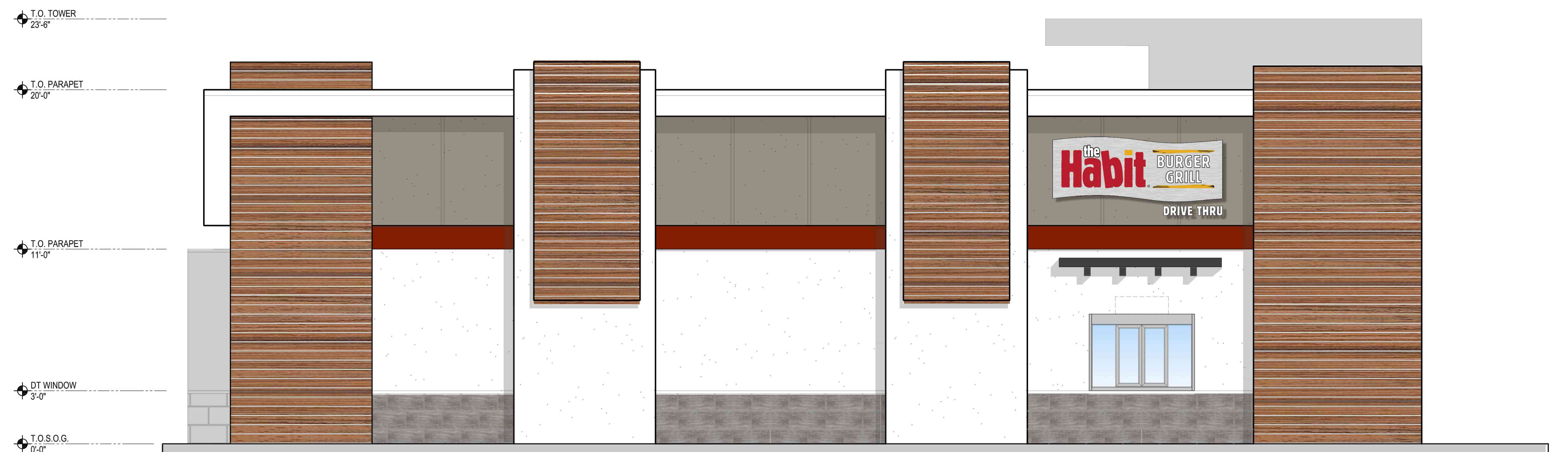
NORTH ELEVATION (REAR)

3



SOUTH ELEVATION (FRONT)

2



WEST ELEVATION (DRIVE-THRU)

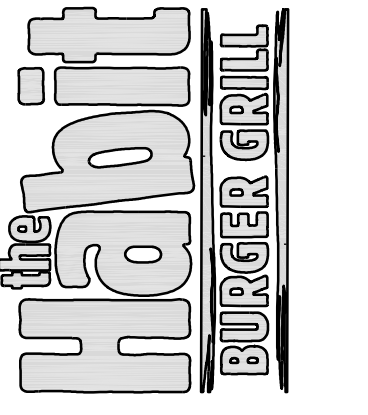
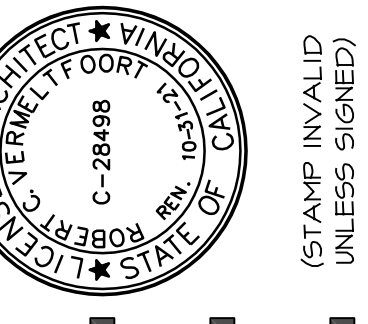
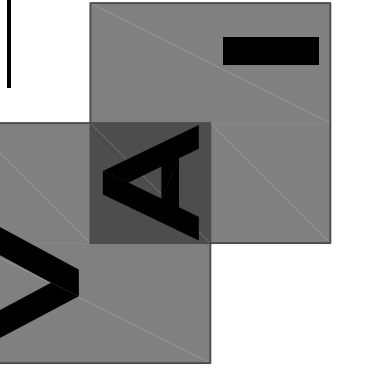
4

NO.	DATE	REVISION

This document, the ideas and designs incorporated herein, are solely the property of VAI and is not to be used, in whole or in part for any project or duplication, without written authorization.

© COPYRIGHT 2021

Vermelfoort Architects, Inc.
 Architecture and Planning
 8525 North Cedar Avenue
 Suite 106
 Fresno, California 93720
 Office: 559.432.6744
 Email: rcv@vaifresno.com



PROPOSED BUILDING
 & SITE DEVELOPMENT
 58024 TWENTYNINE PALMS HIGHWAY,
 YUCCA VALLEY, CALIFORNIA 92284
 COLORED ELEVATIONS

ISSUE DATE:	2-17-21
REV. DATE:	
PROJECT NO.:	20041
DRAWN BY:	NL
SHEET:	A302