

Potential Waters of the State and CDFW Jurisdictional Areas

Potential Waters of the State (0.68 acre / 6,654 linear feet)

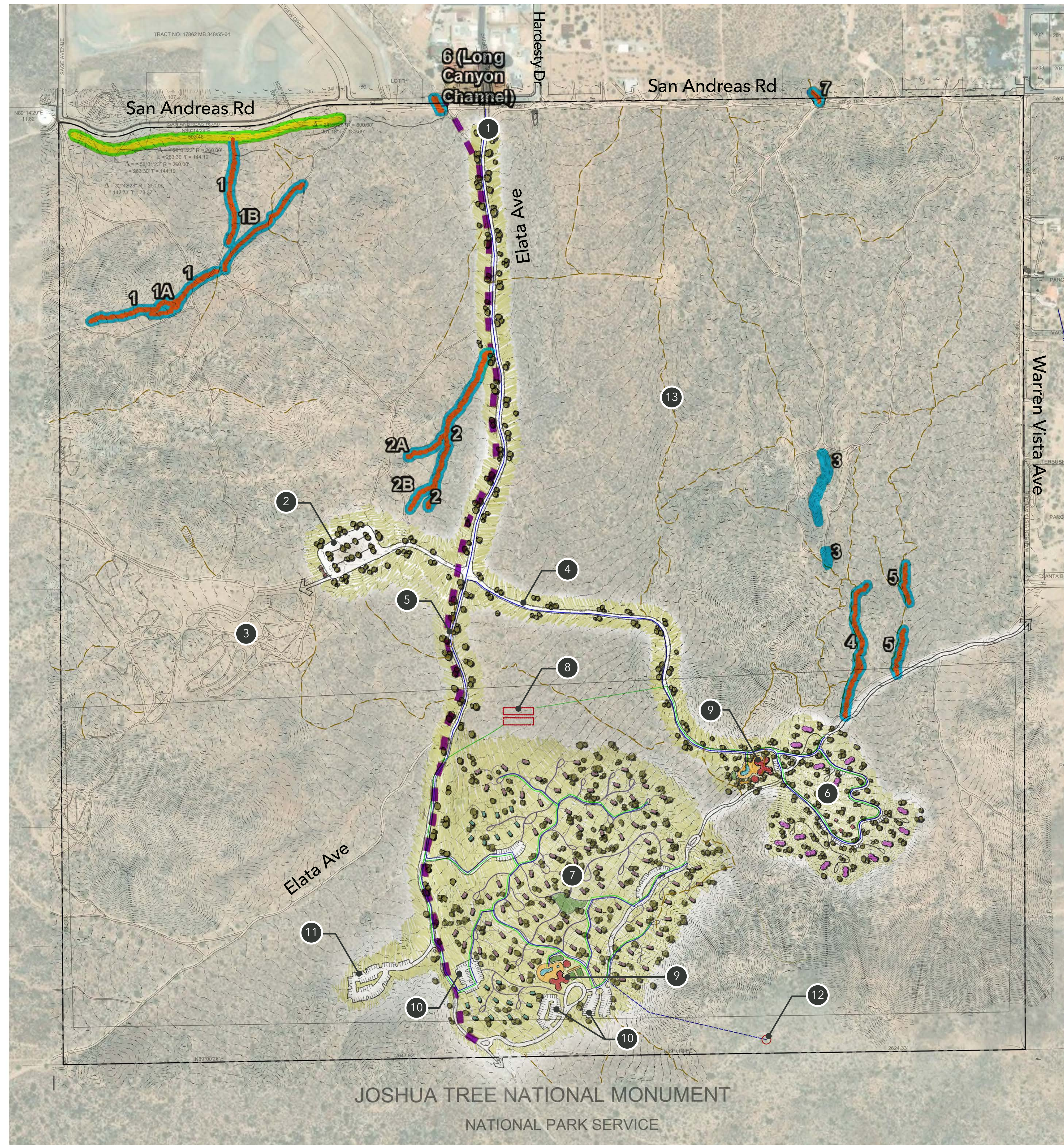
- █ Drainage (0.34 acre / 5,151 linear feet)
- █ Ditch (0.33 acre / 1,502 linear feet)

Potential CDFW Jurisdictional Areas (0.70 acre / 7,167 linear feet)

- █ Drainage (0.37 acre / 5,664 linear feet)
- █ Ditch (0.33 acre / 1,502 linear feet)

Potential Non-Jurisdictional Waters of the State / CDFW Jurisdictional Areas

- █ Historic Drainage (2.54 acres / 5,664 linear feet)



Legend

- 1 Main Entry
- 2 Parking Lot for Mountain Bike Trails Park
- 3 Mountain Bike Trails Park
- 4 Entry Road to "Luxe" Camp Site
- 5 Entry Road to Under Canvas Camp Site
- 6 "Luxe" Camp Site
- 7 Under Canvas Camp Site
- 8 Septic System
- 9 Lobby + Restaurant Tent
 - Check-in
 - Pool/Spa Amenities
- 10 Under Canvas Camp Parking
- 11 Public Access Trailhead Parking
- 12 Water Tank
- 13 Existing Trail

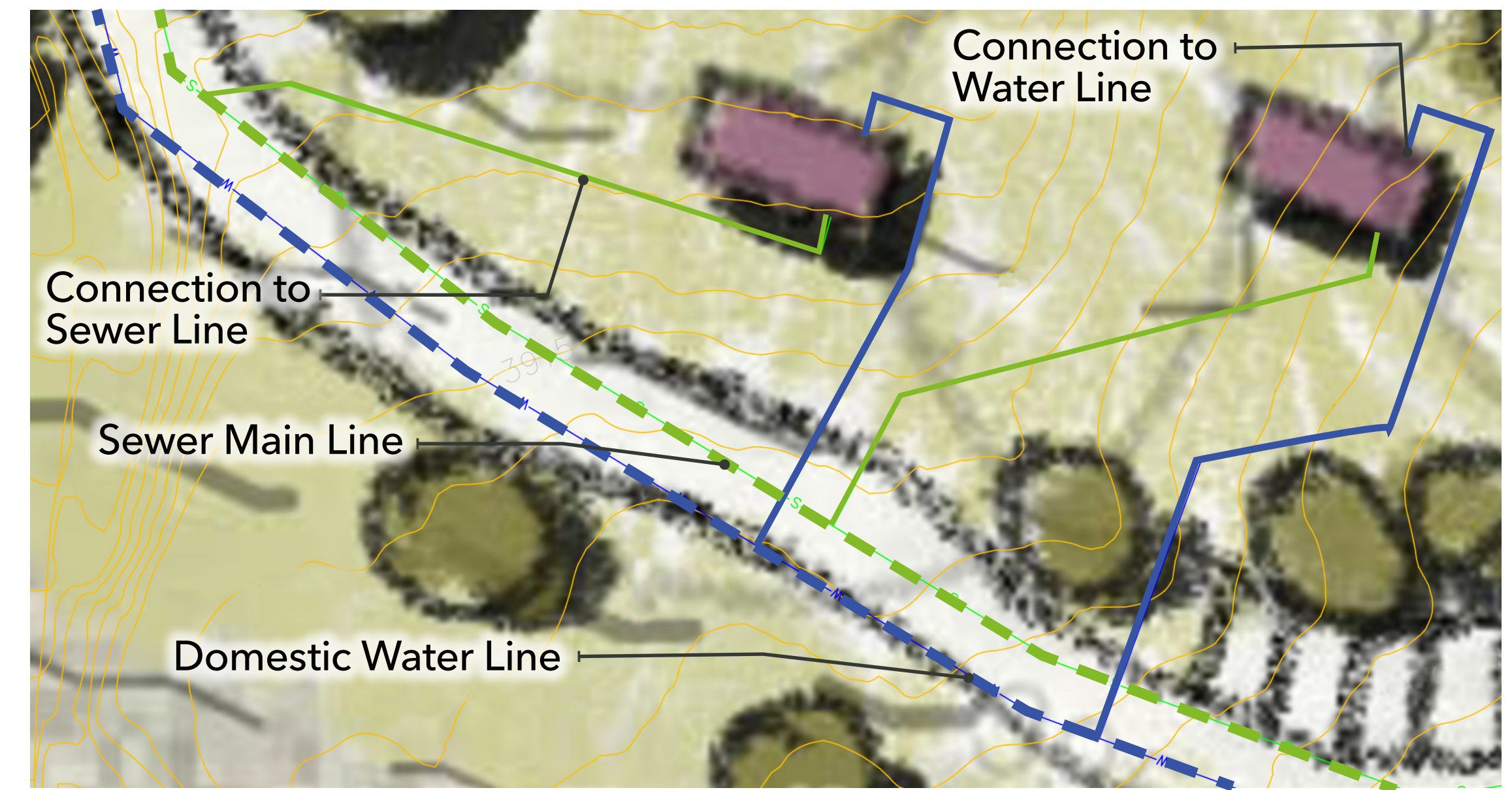
Notes:

1. No evidence of tortoise presence on site.
2. *Saltugilia latimeri* and other sensitive plant species exist on site. Specific locations of sensitive plant species to be located by Environmental Engineers.

Tent Quantities

UNDER CANVAS	
Deluxe/Suite	88
Safari	21
Total	109
'LUXE' BRAND	
Total	15

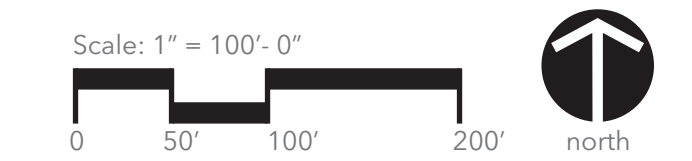


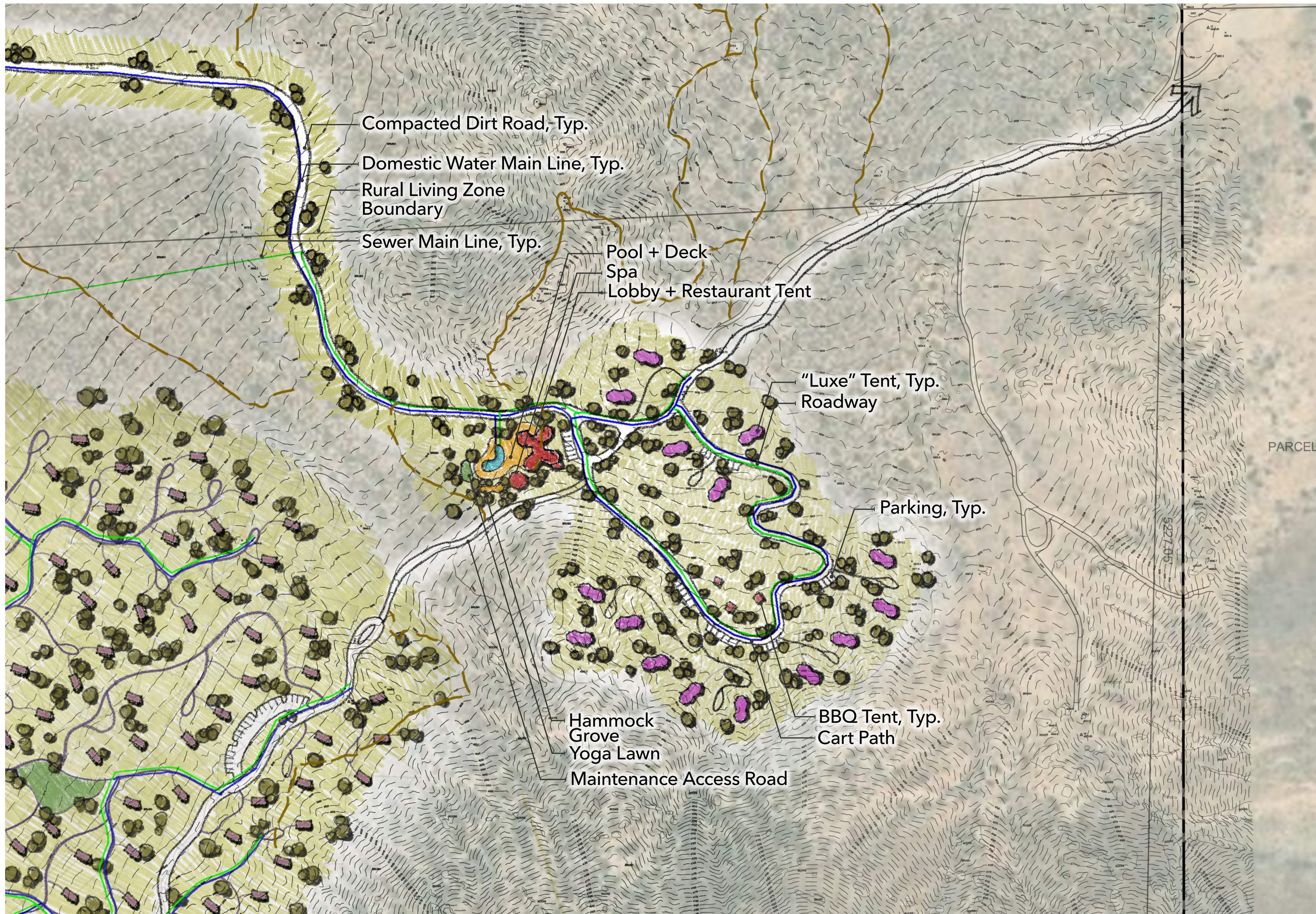


Typical Tent Water and Sewer Connection

Tent Quantities

UNDER CANVAS	
Deluxe/Suite	88
Safari	21
Total	109





Tent Quantities

"LUXE" BRAND	
Total	15

