



## MEMORANDUM

To: Jared Jerome, Town of Yucca Valley

From: Sophie LaHerran  
Ace Malisos  
Kimley-Horn and Associates, Inc.

Date: June 18, 2020

Subject: Yucca Valley Dominos Project – Air Quality and Greenhouse Gas Emissions

---

### Purpose

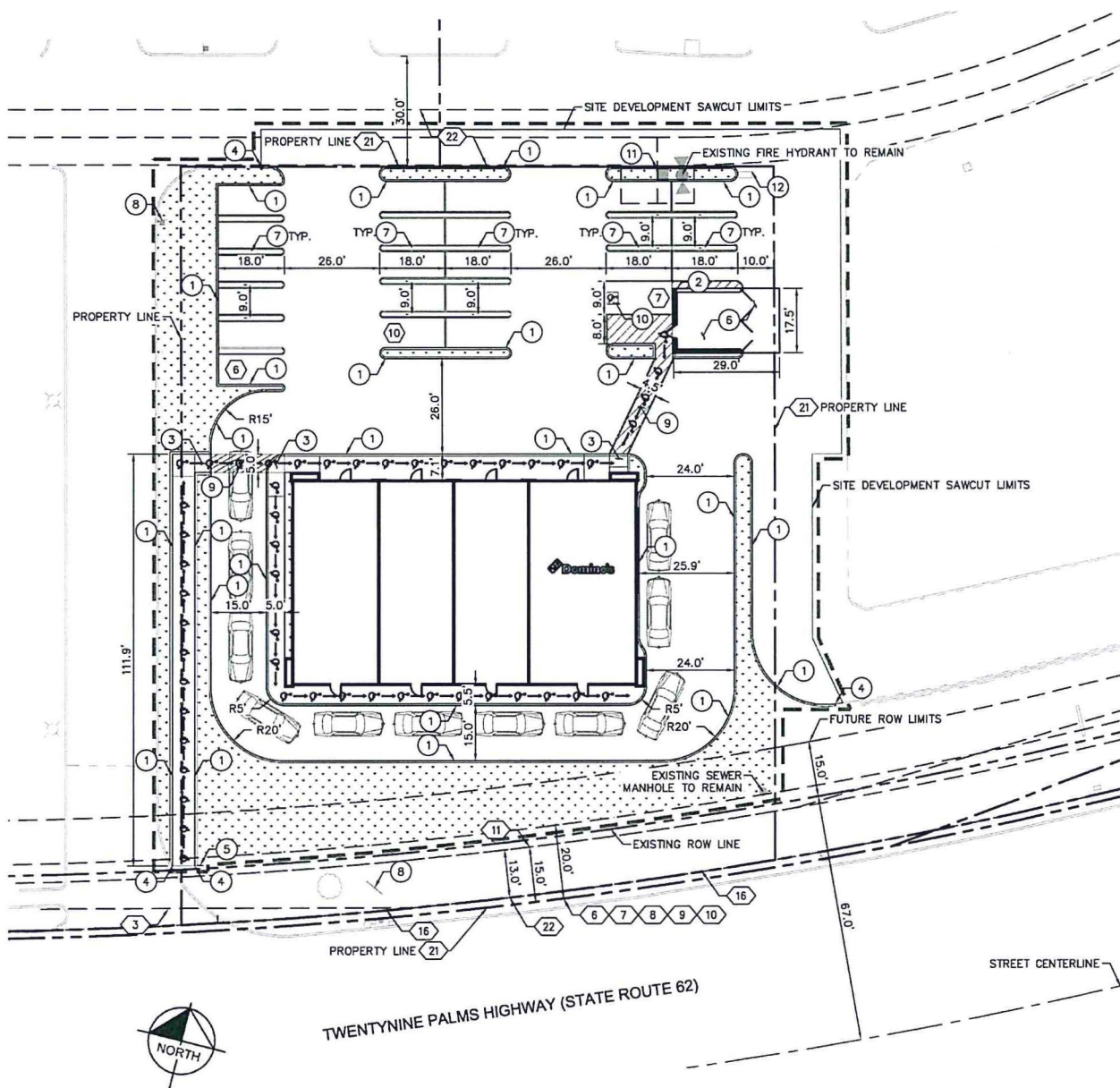
The purpose of this memorandum is to identify the air quality and greenhouse gas (GHG) emissions associated with construction and operations of the proposed Yucca Valley Dominos Project (project), located in Yucca Valley, California.

### Project Description

The project proposes to construct a Dominos restaurant and other fast-food restaurant uses, totaling approximately 5,000 square feet. The project site is located within the northwest quadrant of the Twentynine Palms Highway (State Route 62) and Balsa Avenue intersection as a stand-alone building within an existing shopping center. Land uses surrounding the site include single-family residences to the south across State Route 62, a restaurant and additional retail/commercial uses and surface parking to the north and east, a movie theatre and surface parking lot to the south, and a bowling alley across Balsa Avenue to the west.

Regional vehicular access to the site is provided by the State Route 62 (SR-62). The communities of Joshua Tree and Morongo Valley are located east and west of the project site. The project site plan is provided on **Figure 1: Site Plan**.

Figure 1: Site Plan





## Air Quality Impacts

### MDAQMD Mass Emission Thresholds

MDAQMD’s significance criteria are used to make the above determinations. According to the MDAQMD, an air quality impact is considered significant if a project would violate any NAAQS or CAAQS, contribute substantially to an existing or projected air quality violation, or expose sensitive receptors to substantial pollutant concentrations. The MDAQMD has established thresholds of significance for air quality during construction and operational activities of land use development projects, as shown in **Table 1: Mojave Desert Air Quality Management District Emissions Thresholds**. These mass emissions thresholds are pollutant limits described in pounds per day and tons per year. The project emissions are quantified using the methods described above and compared to the MDAQMD’s thresholds.

<b>Table 1: Mojave Desert Air Quality Management District Emissions Thresholds</b>		
<b>Pollutants</b>	<b>Annual Thresholds (tons)</b>	<b>Daily Thresholds (pounds)</b>
Greenhouse Gases (CO <sub>2</sub> e)	100,000	548,000
Carbon Monoxide (CO)	100	548
Nitrogen Oxides (NO <sub>x</sub> )	25	137
Volatile Organic Compounds (VOC)	25	137
Sulfur Oxides (SO <sub>x</sub> )	25	137
Coarse Particulates (PM <sub>10</sub> )	15	82
Fine Particulates (PM <sub>2.5</sub> )	12	65

*Source: Mojave Desert Air Quality Management District, MDAQMD CEQA and Federal Conformity Guidelines, April 2016.*

A significant project must incorporate mitigation sufficient to reduce its impact to a level that is not significant. A project that cannot be mitigated to a level that is not significant must incorporate all feasible mitigation. The emission thresholds are given as a daily value and an annual value, so that multi-phased project (such as project with a construction phase and a separate operational phase) with phases shorter than one year can be compared to the daily value.

### Construction Emissions

Construction associated with the proposed project would generate short-term emissions of criteria air pollutants. The criteria pollutants of primary concern within the project area include ozone-precursor pollutants (i.e., ROG and NO<sub>x</sub>), PM<sub>10</sub>, and PM<sub>2.5</sub>. Construction-generated emissions are short term and of temporary duration, lasting only as long as construction activities occur, but would be considered a significant air quality impact if the volume of pollutants generated exceeds the MDAQMD’s thresholds of significance.

Construction results in the temporary generation of emissions resulting from demolition, site grading, road paving, motor vehicle exhaust associated with construction equipment and worker trips, and the movement of construction equipment, especially on unpaved surfaces. Emissions of airborne particulate matter are largely dependent on the amount of ground disturbance associated with site preparation activities as well as weather conditions and the appropriate application of water.

The duration of construction activities for the project is estimated to be approximately 5 months, beginning in early 2021. The project would demolish the existing parking lot and construct a single-story, Dominos Drive-Thru on the project site and associated parking. Construction-generated emissions associated the proposed project were calculated using the CARB-approved California Emissions Estimator Model version 2016.3.2 (CalEEMod), which is designed to model emissions for land use development projects, based on typical construction requirements. See Appendix A (Air Quality and GHG Data) for more information regarding the construction assumptions used in this analysis. Predicted maximum daily construction-generated emissions for the proposed project are identified in **Table 2: Project Construction Emissions**.

<b>Table 2: Project Construction Emissions</b>						
<b>Construction Year</b>	<b>Emissions (pounds per day)<sup>1</sup></b>					
	<b>ROG</b>	<b>NO<sub>x</sub></b>	<b>CO</b>	<b>SO<sub>2</sub></b>	<b>PM<sub>10</sub></b>	<b>PM<sub>2.5</sub></b>
2021	3.83	9.83	9.38	0.02	2.37	0.82
MDAQMD Threshold	n/a	137	548	137	82	65
<b>MDAQMD Threshold Exceeded?</b>	<b>n/a</b>	<b>No</b>	<b>No</b>	<b>No</b>	<b>No</b>	<b>No</b>
Notes:						
1. MDAQMD Rule 403 Fugitive Dust applied. The Rule 403 reduction/credits include the following: properly maintain mobile and other construction equipment; replace ground cover in disturbed areas quickly; water exposed surfaces three times daily; replace ground cover of area disturbed; water all haul roads twice daily; and limit speeds on unpaved roads to 15 miles per hour. Reductions percentages from the South Coast Air Quality Management District (SCAQMD) CEQA Handbook (Tables XI-A through XI-E) were applied. No mitigation was applied to construction equipment. Refer to Appendix A for Model Data Outputs.						
Source: CalEEMod version 2016.3.2. Refer to Appendix A for model outputs.						

**Table 2** shows that construction pollutant emissions would remain below their respective thresholds with implementation of required MDAQMD Rule 403.2. The project would also be required to comply with MDAQMD Rules 402 and 1113, which prohibit nuisances and limit VOC content in paints, respectively. Compliance with MDAQMD rules 402 and 1113 would further reduce specific construction-related emissions. As shown above, all criteria pollutant emissions would remain below their respective thresholds and impacts would be less than significant.



Operational Emissions

Operational emissions are typically associated with mobile sources (i.e., motor vehicle use) and area sources (such as the use of landscape maintenance equipment, hearths, consumer products, and architectural coatings). Energy source emissions would be generated from electricity and natural gas (non-hearth) usage. **Table 3: Operational Emissions** summarizes the operational emissions attributable to the proposed project. As shown in **Table 3**, the project’s emissions would not exceed MDAQMD thresholds. Therefore, regional operations emissions would result in a less than significant long-term regional air quality impact.

Table 3: Operational Emissions						
Source	Emissions (pounds per day) <sup>1</sup>					
	ROG	NO <sub>x</sub>	CO	SO <sub>2</sub>	PM <sub>10</sub>	PM <sub>2.5</sub>
<b>Project Emissions</b>						
Area	0.15	0.00	0.00	0.00	0.00	0.00
Energy	0.40	0.37	0.31	0.00	0.03	0.03
Mobile	6.01	34.44	37.77	0.13	7.28	2.00
<b>Total</b>	<b>6.20</b>	<b>34.81</b>	<b>38.08</b>	<b>0.13</b>	<b>7.31</b>	<b>2.03</b>
MDAQMD Threshold	n/a	137	548	137	82	65
<b>MDAQMD Threshold Exceeded?</b>	<b>n/a</b>	<b>No</b>	<b>No</b>	<b>No</b>	<b>No</b>	<b>No</b>
Notes:						
1. Emissions were calculated using the California Emissions Estimator Model version 2016.3.2 (CalEEMod), as recommended by the MDAQMD. Worst-case seasonal maximum daily emissions are reported.						

Carbon Monoxide Hotspots

An analysis of CO “hot spots” is needed to determine whether the change in the level of service (LOS) of an intersection from the proposed project would have the potential to result in exceedances of the CAAQS or NAAQS. It has long been recognized that CO exceedances are caused by vehicular emissions, primarily when vehicles are idling at intersections. Vehicle emissions standards have become increasingly stringent in the last 20 years. Currently, the CO standard in California is a maximum of 3.4 grams per mile for passenger cars (requirements for certain vehicles are more stringent). With the turnover of older vehicles, introduction of cleaner fuels, and implementation of control technology on industrial facilities, CO concentrations have steadily declined.

Accordingly, with the steadily decreasing CO emissions from vehicles, even very busy intersections do not result in exceedances of the CO standard. MDAQMD has not established CO hotspot methodology. However, according to the Traffic Circulation Study prepared by Kimley-Horn (June 2, 2020), the project would not cause an intersection to operate an unacceptable LOS.

Additionally, the 2003 *Air Quality Management Plan* is the most recent AQMP that addresses CO concentrations. As part of the SCAQMD CO Hotspot analysis, the Wilshire Boulevard/Veteran Avenue intersection, one of the most congested intersections in Southern California with an average daily

traffic (ADT) volume of approximately 100,000 vehicles per day, was modeled for CO concentrations. The proposed project considered herein would not produce the volume of traffic required to generate a CO hot spot in the context of SCAQMD’s 2003 CO hot-spot analysis. As the CO hotspots were not experienced at the Wilshire Boulevard/Veteran Avenue intersection even as it accommodates 100,000 vehicles daily, it can be reasonably inferred that CO hotspots would not be experienced at any vicinity intersections from 1,558 daily vehicle trips<sup>1</sup> attributable to the project. Therefore, impacts would be less than significant in this regard.

**Greenhouse Gas Emissions**

The project would include direct and indirect GHG emissions from project construction and operations. Construction is considered a direct source since these emissions occur at the site. Direct operational-related GHG emissions for the proposed project would include emissions from area and mobile sources, while indirect emissions are from energy consumption, water demand, and solid waste.

Construction GHG Emissions

Construction of the project would result in direct emissions of CO<sub>2</sub>, N<sub>2</sub>O, and CH<sub>4</sub> from construction equipment and the transport of materials and construction workers to and from the project site. Construction GHG emissions are typically summed and amortized over the lifetime of the project (assumed to be 30 years), then added to the operational emissions.<sup>2</sup> Total GHG emissions generated during all phases of construction were combined and are presented in **Table 4: Construction Greenhouse Gas Emissions**. The CalEEMod outputs are contained within Appendix A (Air Quality and GHG Data). As shown in **Table 4**, the project construction would result in 73 MTCO<sub>2</sub>e (approximately 2.4 MTCO<sub>2</sub>e/year when amortized over 30 years).

<b>Table 4: Construction Greenhouse Gas Emissions</b>	
<b>Construction</b>	<b>MTCO<sub>2</sub>e per Year</b>
Total Construction	73
Source: CalEEMod version 2016.3.2. Refer to Appendix A for model data outputs.	

Operational GHG Emissions

Operational or long-term emissions occur over the life of the proposed project. GHG emissions would result from direct emissions such as project generated vehicular traffic, on-site combustion of natural gas, operation of any landscaping equipment. Operational GHG emissions would also result from indirect sources, such as off-site generation of electrical power over the life of the project, the energy

<sup>1</sup> Kimley-Horn, *Yucca Valley Dominos Traffic Circulation Study*, June 2020.

<sup>2</sup> The project lifetime is based on the standard 30-year assumption of the South Coast Air Quality Management District (South Coast Air Quality Management District, *Minutes for the GHG CEQA Significance Threshold Stakeholder Working Group #13*, August 26, 2009).



required to convey water to, and wastewater from the project site, the emissions associated with solid waste generated from the project site, and any fugitive refrigerants from air conditioning or refrigerators. **Table 5: Total Project Greenhouse Gas Emissions** summarizes the total GHG emissions associated with proposed project. As shown, the project would generate approximately 1,726 MTCO<sub>2</sub>e/year. The project would not result in an increase in GHG emissions that exceed the MDAQMD’s screening threshold of 100,000 MTCO<sub>2</sub>e/yr. Therefore, project-related GHG emissions would be less than significant.

<b>Table 5: Total Project Greenhouse Gas Emissions</b>	
<b>Emissions Source</b>	<b>MTCO<sub>2</sub>e per Year</b>
<b>Proposed Emissions</b>	
Construction Amortized over 30 Years	2.4
Area Source	0.00
Energy	151
Mobile	1,535
Waste	29
Water & Wastewater	9
<b>Total Project Emissions<sup>1</sup></b>	<b>1,726.4</b>
MDAQMD Project Threshold	100,000
<b>Threshold Exceeded?</b>	<b>No</b>
Notes:	
1. Totals may be slightly off due to rounding.	
Source: CalEEMod version 2016.3.2. Refer to Appendix A for model data outputs.	

**Conclusion**

Project implementation would result in less than significant short- and long-term air quality and GHG impacts. No mitigation measures would be required.

# Appendix A

## Air Quality and GHG Data

---



Yucca Valley Dominos - San Bernardino-Mojave Desert County, Summer

**Yucca Valley Dominos**  
**San Bernardino-Mojave Desert County, Summer**

**1.0 Project Characteristics**

**1.1 Land Usage**

Land Uses	Size	Metric	Lot Acreage	Floor Surface Area	Population
Fast Food Restaurant with Drive Thru	5.00	1000sqft	0.11	5,000.00	0
Parking Lot	30.00	Space	0.34	15,000.00	0

**1.2 Other Project Characteristics**

Urbanization	Urban	Wind Speed (m/s)	2.6	Precipitation Freq (Days)	32
Climate Zone	10			Operational Year	2021
Utility Company	Southern California Edison				
CO2 Intensity (lb/MWhr)	702.44	CH4 Intensity (lb/MWhr)	0.029	N2O Intensity (lb/MWhr)	0.006

**1.3 User Entered Comments & Non-Default Data**

- Project Characteristics -
- Land Use - Parking area adjusted to match other paved areas
- Construction Phase - Anticipated schedule
- Demolition -
- Construction Off-road Equipment Mitigation - MDAQMD Rule Compliance 403
- Water Mitigation -
- Waste Mitigation - per Ab 939

Table Name	Column Name	Default Value	New Value
------------	-------------	---------------	-----------

tblConstDustMitigation	CleanPavedRoadPercentReduction	0	6
tblConstDustMitigation	WaterUnpavedRoadMoistureContent	0	12
tblConstDustMitigation	WaterUnpavedRoadVehicleSpeed	0	15
tblConstructionPhase	NumDays	5.00	48.00
tblConstructionPhase	NumDays	100.00	94.00
tblConstructionPhase	PhaseEndDate	6/22/2021	6/7/2021
tblConstructionPhase	PhaseEndDate	6/8/2021	5/31/2021
tblConstructionPhase	PhaseEndDate	6/15/2021	6/7/2021
tblConstructionPhase	PhaseStartDate	6/16/2021	4/1/2021
tblConstructionPhase	PhaseStartDate	6/9/2021	6/1/2021
tblLandUse	LandUseSquareFeet	12,000.00	15,000.00
tblLandUse	LotAcreage	0.27	0.34

## 2.0 Emissions Summary

### 2.1 Overall Construction (Maximum Daily Emission)

#### Unmitigated Construction

	ROG	NOx	CO	SO2	Fugitive PM10	Exhaust PM10	PM10 Total	Fugitive PM2.5	Exhaust PM2.5	PM2.5 Total	Bio- CO2	NBio- CO2	Total CO2	CH4	N2O	CO2e
Year	lb/day										lb/day					
2021	3.8324	9.8299	9.5376	0.0189	1.9537	0.5427	2.3667	0.4356	0.5068	0.8247	0.0000	1,880.3081	1,880.3081	0.3839	0.0000	1,886.5864
Maximum	3.8324	9.8299	9.5376	0.0189	1.9537	0.5427	2.3667	0.4356	0.5068	0.8247	0.0000	1,880.3081	1,880.3081	0.3839	0.0000	1,886.5864

#### Mitigated Construction



	ROG	NOx	CO	SO2	Fugitive PM10	Exhaust PM10	PM10 Total	Fugitive PM2.5	Exhaust PM2.5	PM2.5 Total	Bio- CO2	NBio- CO2	Total CO2	CH4	N2O	CO2e
Year	lb/day										lb/day					
2021	3.8324	9.8299	9.5376	0.0189	0.9508	0.5427	1.3638	0.1976	0.5068	0.5867	0.0000	1,880.3081	1,880.3081	0.3839	0.0000	1,886.5864
Maximum	3.8324	9.8299	9.5376	0.0189	0.9508	0.5427	1.3638	0.1976	0.5068	0.5867	0.0000	1,880.3081	1,880.3081	0.3839	0.0000	1,886.5864

	ROG	NOx	CO	SO2	Fugitive PM10	Exhaust PM10	PM10 Total	Fugitive PM2.5	Exhaust PM2.5	PM2.5 Total	Bio- CO2	NBio- CO2	Total CO2	CH4	N2O	CO2e
Percent Reduction	0.00	0.00	0.00	0.00	51.33	0.00	42.37	54.63	0.00	28.85	0.00	0.00	0.00	0.00	0.00	0.00

## 2.2 Overall Operational Unmitigated Operational

	ROG	NOx	CO	SO2	Fugitive PM10	Exhaust PM10	PM10 Total	Fugitive PM2.5	Exhaust PM2.5	PM2.5 Total	Bio- CO2	NBio- CO2	Total CO2	CH4	N2O	CO2e
Category	lb/day										lb/day					
Area	0.1473	3.0000e-005	3.5900e-003	0.0000		1.0000e-005	1.0000e-005		1.0000e-005	1.0000e-005		7.6600e-003	7.6600e-003	2.0000e-005		8.1700e-003
Energy	0.0404	0.3672	0.3085	2.2000e-003		0.0279	0.0279		0.0279	0.0279		440.6769	440.6769	8.4500e-003	8.0800e-003	443.2956
Mobile	6.0139	34.4437	37.7722	0.1294	7.1917	0.0871	7.2787	1.9245	0.0815	2.0060		13,269.6165	13,269.6165	1.0326		13,295.4316
Total	6.2015	34.8110	38.0842	0.1316	7.1917	0.1150	7.3066	1.9245	0.1094	2.0339		13,710.3010	13,710.3010	1.0411	8.0800e-003	13,738.7354

## Mitigated Operational

	ROG	NOx	CO	SO2	Fugitive PM10	Exhaust PM10	PM10 Total	Fugitive PM2.5	Exhaust PM2.5	PM2.5 Total	Bio- CO2	NBio- CO2	Total CO2	CH4	N2O	CO2e
--	-----	-----	----	-----	---------------	--------------	------------	----------------	---------------	-------------	----------	-----------	-----------	-----	-----	------

Category	lb/day										lb/day					
	Area	0.1473	3.0000e-005	3.5900e-003	0.0000		1.0000e-005	1.0000e-005		1.0000e-005	1.0000e-005		7.6600e-003	7.6600e-003	2.0000e-005	
Energy	0.0404	0.3672	0.3085	2.2000e-003		0.0279	0.0279		0.0279	0.0279		440.6769	440.6769	8.4500e-003	8.0800e-003	443.2956
Mobile	6.0139	34.4437	37.7722	0.1294	7.1917	0.0871	7.2787	1.9245	0.0815	2.0060		13,269.6165	13,269.6165	1.0326		13,295.4316
Total	6.2015	34.8110	38.0842	0.1316	7.1917	0.1150	7.3066	1.9245	0.1094	2.0339		13,710.3010	13,710.3010	1.0411	8.0800e-003	13,738.7354

	ROG	NOx	CO	SO2	Fugitive PM10	Exhaust PM10	PM10 Total	Fugitive PM2.5	Exhaust PM2.5	PM2.5 Total	Bio-CO2	NBio-CO2	Total CO2	CH4	N2O	CO2e
Percent Reduction	0.00	0.00	0.00	0.00	0.00	0.00	0.00	0.00	0.00	0.00	0.00	0.00	0.00	0.00	0.00	0.00

### 3.0 Construction Detail

#### Construction Phase

Phase Number	Phase Name	Phase Type	Start Date	End Date	Num Days Week	Num Days	Phase Description
1	Demolition	Demolition	1/1/2021	1/14/2021	5	10	
2	Site Preparation	Site Preparation	1/15/2021	1/15/2021	5	1	
3	Grading	Grading	1/16/2021	1/19/2021	5	2	
4	Building Construction	Building Construction	1/20/2021	5/31/2021	5	94	
5	Paving	Paving	6/1/2021	6/7/2021	5	5	
6	Architectural Coating	Architectural Coating	4/1/2021	6/7/2021	5	48	

Acres of Grading (Site Preparation Phase): 0.5

Acres of Grading (Grading Phase): 0

Acres of Paving: 0.34

Residential Indoor: 0; Residential Outdoor: 0; Non-Residential Indoor: 7,500; Non-Residential Outdoor: 2,500; Striped Parking Area: 900

#### OffRoad Equipment

Phase Name	Offroad Equipment Type	Amount	Usage Hours	Horse Power	Load Factor
Architectural Coating	Air Compressors	1	6.00	78	0.48

Paving	Cement and Mortar Mixers	4	6.00	9	0.56
Demolition	Concrete/Industrial Saws	1	8.00	81	0.73
Grading	Concrete/Industrial Saws	1	8.00	81	0.73
Building Construction	Cranes	1	4.00	231	0.29
Building Construction	Forklifts	2	6.00	89	0.20
Site Preparation	Graders	1	8.00	187	0.41
Paving	Pavers	1	7.00	130	0.42
Paving	Rollers	1	7.00	80	0.38
Demolition	Rubber Tired Dozers	1	1.00	247	0.40
Grading	Rubber Tired Dozers	1	1.00	247	0.40
Building Construction	Tractors/Loaders/Backhoes	2	8.00	97	0.37
Demolition	Tractors/Loaders/Backhoes	2	6.00	97	0.37
Grading	Tractors/Loaders/Backhoes	2	6.00	97	0.37
Paving	Tractors/Loaders/Backhoes	1	7.00	97	0.37
Site Preparation	Tractors/Loaders/Backhoes	1	8.00	97	0.37

### Trips and VMT

Phase Name	Offroad Equipment Count	Worker Trip Number	Vendor Trip Number	Hauling Trip Number	Worker Trip Length	Vendor Trip Length	Hauling Trip Length	Worker Vehicle Class	Vendor Vehicle Class	Hauling Vehicle Class
Demolition	4	10.00	0.00	79.00	10.80	7.30	20.00	LD_Mix	HDT_Mix	HHDT
Site Preparation	2	5.00	0.00	0.00	10.80	7.30	20.00	LD_Mix	HDT_Mix	HHDT
Grading	4	10.00	0.00	0.00	10.80	7.30	20.00	LD_Mix	HDT_Mix	HHDT
Building Construction	5	8.00	3.00	0.00	10.80	7.30	20.00	LD_Mix	HDT_Mix	HHDT
Paving	7	18.00	0.00	0.00	10.80	7.30	20.00	LD_Mix	HDT_Mix	HHDT
Architectural Coating	1	2.00	0.00	0.00	10.80	7.30	20.00	LD_Mix	HDT_Mix	HHDT

### 3.1 Mitigation Measures Construction

Replace Ground Cover

Water Exposed Area

Water Unpaved Roads

Reduce Vehicle Speed on Unpaved Roads

Clean Paved Roads

### 3.2 Demolition - 2021

#### Unmitigated Construction On-Site

	ROG	NOx	CO	SO2	Fugitive PM10	Exhaust PM10	PM10 Total	Fugitive PM2.5	Exhaust PM2.5	PM2.5 Total	Bio- CO2	NBio- CO2	Total CO2	CH4	N2O	CO2e
Category	lb/day										lb/day					
Fugitive Dust					1.7333	0.0000	1.7333	0.2625	0.0000	0.2625			0.0000			0.0000
Off-Road	0.7965	7.2530	7.5691	0.0120		0.4073	0.4073		0.3886	0.3886		1,147.4338	1,147.4338	0.2138		1,152.7797
<b>Total</b>	<b>0.7965</b>	<b>7.2530</b>	<b>7.5691</b>	<b>0.0120</b>	<b>1.7333</b>	<b>0.4073</b>	<b>2.1406</b>	<b>0.2625</b>	<b>0.3886</b>	<b>0.6511</b>		<b>1,147.4338</b>	<b>1,147.4338</b>	<b>0.2138</b>		<b>1,152.7797</b>

#### Unmitigated Construction Off-Site

	ROG	NOx	CO	SO2	Fugitive PM10	Exhaust PM10	PM10 Total	Fugitive PM2.5	Exhaust PM2.5	PM2.5 Total	Bio- CO2	NBio- CO2	Total CO2	CH4	N2O	CO2e
Category	lb/day										lb/day					
Hauling	0.0469	1.8019	0.2791	6.1400e-003	0.1383	5.1000e-003	0.1434	0.0379	4.8800e-003	0.0428		651.8999	651.8999	0.0349		652.7735
Vendor	0.0000	0.0000	0.0000	0.0000	0.0000	0.0000	0.0000	0.0000	0.0000	0.0000		0.0000	0.0000	0.0000		0.0000
Worker	0.0413	0.0239	0.3151	8.1000e-004	0.0822	5.4000e-004	0.0827	0.0218	5.0000e-004	0.0223		80.9745	80.9745	2.3500e-003		81.0331
<b>Total</b>	<b>0.0882</b>	<b>1.8258</b>	<b>0.5942</b>	<b>6.9500e-003</b>	<b>0.2204</b>	<b>5.6400e-003</b>	<b>0.2260</b>	<b>0.0597</b>	<b>5.3800e-003</b>	<b>0.0651</b>		<b>732.8744</b>	<b>732.8744</b>	<b>0.0373</b>		<b>733.8066</b>

#### Mitigated Construction On-Site



	ROG	NOx	CO	SO2	Fugitive PM10	Exhaust PM10	PM10 Total	Fugitive PM2.5	Exhaust PM2.5	PM2.5 Total	Bio- CO2	NBio- CO2	Total CO2	CH4	N2O	CO2e
Category	lb/day										lb/day					
Fugitive Dust					0.7410	0.0000	0.7410	0.1122	0.0000	0.1122			0.0000			0.0000
Off-Road	0.7965	7.2530	7.5691	0.0120		0.4073	0.4073		0.3886	0.3886	0.0000	1,147.4338	1,147.4338	0.2138		1,152.7797
Total	0.7965	7.2530	7.5691	0.0120	0.7410	0.4073	1.1483	0.1122	0.3886	0.5008	0.0000	1,147.4338	1,147.4338	0.2138		1,152.7797

### Mitigated Construction Off-Site

	ROG	NOx	CO	SO2	Fugitive PM10	Exhaust PM10	PM10 Total	Fugitive PM2.5	Exhaust PM2.5	PM2.5 Total	Bio- CO2	NBio- CO2	Total CO2	CH4	N2O	CO2e
Category	lb/day										lb/day					
Hauling	0.0469	1.8019	0.2791	6.1400e-003	0.1320	5.1000e-003	0.1371	0.0364	4.8800e-003	0.0412		651.8999	651.8999	0.0349		652.7735
Vendor	0.0000	0.0000	0.0000	0.0000	0.0000	0.0000	0.0000	0.0000	0.0000	0.0000		0.0000	0.0000	0.0000		0.0000
Worker	0.0413	0.0239	0.3151	8.1000e-004	0.0779	5.4000e-004	0.0784	0.0207	5.0000e-004	0.0212		80.9745	80.9745	2.3500e-003		81.0331
Total	0.0882	1.8258	0.5942	6.9500e-003	0.2098	5.6400e-003	0.2155	0.0571	5.3800e-003	0.0625		732.8744	732.8744	0.0373		733.8066

### 3.3 Site Preparation - 2021

#### Unmitigated Construction On-Site

	ROG	NOx	CO	SO2	Fugitive PM10	Exhaust PM10	PM10 Total	Fugitive PM2.5	Exhaust PM2.5	PM2.5 Total	Bio- CO2	NBio- CO2	Total CO2	CH4	N2O	CO2e
Category	lb/day										lb/day					

Fugitive Dust					0.5303	0.0000	0.5303	0.0573	0.0000	0.0573			0.0000			0.0000
Off-Road	0.6403	7.8204	4.0274	9.7300e-003		0.2995	0.2995		0.2755	0.2755		942.5842	942.5842	0.3049		950.2055
<b>Total</b>	<b>0.6403</b>	<b>7.8204</b>	<b>4.0274</b>	<b>9.7300e-003</b>	<b>0.5303</b>	<b>0.2995</b>	<b>0.8297</b>	<b>0.0573</b>	<b>0.2755</b>	<b>0.3328</b>		<b>942.5842</b>	<b>942.5842</b>	<b>0.3049</b>		<b>950.2055</b>

**Unmitigated Construction Off-Site**

	ROG	NOx	CO	SO2	Fugitive PM10	Exhaust PM10	PM10 Total	Fugitive PM2.5	Exhaust PM2.5	PM2.5 Total	Bio- CO2	NBio- CO2	Total CO2	CH4	N2O	CO2e
Category	lb/day										lb/day					
Hauling	0.0000	0.0000	0.0000	0.0000	0.0000	0.0000	0.0000	0.0000	0.0000	0.0000		0.0000	0.0000	0.0000		0.0000
Vendor	0.0000	0.0000	0.0000	0.0000	0.0000	0.0000	0.0000	0.0000	0.0000	0.0000		0.0000	0.0000	0.0000		0.0000
Worker	0.0206	0.0120	0.1576	4.1000e-004	0.0411	2.7000e-004	0.0414	0.0109	2.5000e-004	0.0111		40.4873	40.4873	1.1700e-003		40.5166
<b>Total</b>	<b>0.0206</b>	<b>0.0120</b>	<b>0.1576</b>	<b>4.1000e-004</b>	<b>0.0411</b>	<b>2.7000e-004</b>	<b>0.0414</b>	<b>0.0109</b>	<b>2.5000e-004</b>	<b>0.0111</b>		<b>40.4873</b>	<b>40.4873</b>	<b>1.1700e-003</b>		<b>40.5166</b>

**Mitigated Construction On-Site**

	ROG	NOx	CO	SO2	Fugitive PM10	Exhaust PM10	PM10 Total	Fugitive PM2.5	Exhaust PM2.5	PM2.5 Total	Bio- CO2	NBio- CO2	Total CO2	CH4	N2O	CO2e
Category	lb/day										lb/day					
Fugitive Dust					0.2267	0.0000	0.2267	0.0245	0.0000	0.0245			0.0000			0.0000
Off-Road	0.6403	7.8204	4.0274	9.7300e-003		0.2995	0.2995		0.2755	0.2755	0.0000	942.5842	942.5842	0.3049		950.2055
<b>Total</b>	<b>0.6403</b>	<b>7.8204</b>	<b>4.0274</b>	<b>9.7300e-003</b>	<b>0.2267</b>	<b>0.2995</b>	<b>0.5262</b>	<b>0.0245</b>	<b>0.2755</b>	<b>0.3000</b>	<b>0.0000</b>	<b>942.5842</b>	<b>942.5842</b>	<b>0.3049</b>		<b>950.2055</b>

**Mitigated Construction Off-Site**

	ROG	NOx	CO	SO2	Fugitive PM10	Exhaust PM10	PM10 Total	Fugitive PM2.5	Exhaust PM2.5	PM2.5 Total	Bio- CO2	NBio- CO2	Total CO2	CH4	N2O	CO2e
Category	lb/day										lb/day					
Hauling	0.0000	0.0000	0.0000	0.0000	0.0000	0.0000	0.0000	0.0000	0.0000	0.0000		0.0000	0.0000	0.0000		0.0000
Vendor	0.0000	0.0000	0.0000	0.0000	0.0000	0.0000	0.0000	0.0000	0.0000	0.0000		0.0000	0.0000	0.0000		0.0000
Worker	0.0206	0.0120	0.1576	4.1000e-004	0.0389	2.7000e-004	0.0392	0.0104	2.5000e-004	0.0106		40.4873	40.4873	1.1700e-003		40.5166
Total	0.0206	0.0120	0.1576	4.1000e-004	0.0389	2.7000e-004	0.0392	0.0104	2.5000e-004	0.0106		40.4873	40.4873	1.1700e-003		40.5166

**3.4 Grading - 2021**

**Unmitigated Construction On-Site**

	ROG	NOx	CO	SO2	Fugitive PM10	Exhaust PM10	PM10 Total	Fugitive PM2.5	Exhaust PM2.5	PM2.5 Total	Bio- CO2	NBio- CO2	Total CO2	CH4	N2O	CO2e
Category	lb/day										lb/day					
Fugitive Dust					0.7528	0.0000	0.7528	0.4138	0.0000	0.4138			0.0000			0.0000
Off-Road	0.7965	7.2530	7.5691	0.0120		0.4073	0.4073		0.3886	0.3886		1,147.4338	1,147.4338	0.2138		1,152.7797
Total	0.7965	7.2530	7.5691	0.0120	0.7528	0.4073	1.1601	0.4138	0.3886	0.8024		1,147.4338	1,147.4338	0.2138		1,152.7797

**Unmitigated Construction Off-Site**

	ROG	NOx	CO	SO2	Fugitive PM10	Exhaust PM10	PM10 Total	Fugitive PM2.5	Exhaust PM2.5	PM2.5 Total	Bio- CO2	NBio- CO2	Total CO2	CH4	N2O	CO2e
--	-----	-----	----	-----	---------------	--------------	------------	----------------	---------------	-------------	----------	-----------	-----------	-----	-----	------

Category	lb/day										lb/day					
	ROG	NOx	CO	SO2	Fugitive PM10	Exhaust PM10	PM10 Total	Fugitive PM2.5	Exhaust PM2.5	PM2.5 Total	Bio- CO2	NBio- CO2	Total CO2	CH4	N2O	CO2e
Hauling	0.0000	0.0000	0.0000	0.0000	0.0000	0.0000	0.0000	0.0000	0.0000	0.0000			0.0000	0.0000	0.0000	0.0000
Vendor	0.0000	0.0000	0.0000	0.0000	0.0000	0.0000	0.0000	0.0000	0.0000	0.0000			0.0000	0.0000	0.0000	0.0000
Worker	0.0413	0.0239	0.3151	8.1000e-004	0.0822	5.4000e-004	0.0827	0.0218	5.0000e-004	0.0223			80.9745	80.9745	2.3500e-003	81.0331
<b>Total</b>	<b>0.0413</b>	<b>0.0239</b>	<b>0.3151</b>	<b>8.1000e-004</b>	<b>0.0822</b>	<b>5.4000e-004</b>	<b>0.0827</b>	<b>0.0218</b>	<b>5.0000e-004</b>	<b>0.0223</b>			<b>80.9745</b>	<b>80.9745</b>	<b>2.3500e-003</b>	<b>81.0331</b>

**Mitigated Construction On-Site**

Category	ROG	NOx	CO	SO2	Fugitive PM10	Exhaust PM10	PM10 Total	Fugitive PM2.5	Exhaust PM2.5	PM2.5 Total	Bio- CO2	NBio- CO2	Total CO2	CH4	N2O	CO2e
	lb/day										lb/day					
Fugitive Dust					0.3218	0.0000	0.3218	0.1769	0.0000	0.1769			0.0000			0.0000
Off-Road	0.7965	7.2530	7.5691	0.0120		0.4073	0.4073		0.3886	0.3886	0.0000	1,147.4338	1,147.4338	0.2138		1,152.7797
<b>Total</b>	<b>0.7965</b>	<b>7.2530</b>	<b>7.5691</b>	<b>0.0120</b>	<b>0.3218</b>	<b>0.4073</b>	<b>0.7292</b>	<b>0.1769</b>	<b>0.3886</b>	<b>0.5655</b>	<b>0.0000</b>	<b>1,147.4338</b>	<b>1,147.4338</b>	<b>0.2138</b>		<b>1,152.7797</b>

**Mitigated Construction Off-Site**

Category	ROG	NOx	CO	SO2	Fugitive PM10	Exhaust PM10	PM10 Total	Fugitive PM2.5	Exhaust PM2.5	PM2.5 Total	Bio- CO2	NBio- CO2	Total CO2	CH4	N2O	CO2e
	lb/day										lb/day					
Hauling	0.0000	0.0000	0.0000	0.0000	0.0000	0.0000	0.0000	0.0000	0.0000	0.0000			0.0000	0.0000	0.0000	0.0000
Vendor	0.0000	0.0000	0.0000	0.0000	0.0000	0.0000	0.0000	0.0000	0.0000	0.0000			0.0000	0.0000	0.0000	0.0000
Worker	0.0413	0.0239	0.3151	8.1000e-004	0.0779	5.4000e-004	0.0784	0.0207	5.0000e-004	0.0212			80.9745	80.9745	2.3500e-003	81.0331



Total	0.0413	0.0239	0.3151	8.1000e-004	0.0779	5.4000e-004	0.0784	0.0207	5.0000e-004	0.0212		80.9745	80.9745	2.3500e-003		81.0331
-------	--------	--------	--------	-------------	--------	-------------	--------	--------	-------------	--------	--	---------	---------	-------------	--	---------

### 3.5 Building Construction - 2021

#### Unmitigated Construction On-Site

	ROG	NOx	CO	SO2	Fugitive PM10	Exhaust PM10	PM10 Total	Fugitive PM2.5	Exhaust PM2.5	PM2.5 Total	Bio- CO2	NBio- CO2	Total CO2	CH4	N2O	CO2e
Category	lb/day										lb/day					
Off-Road	0.7750	7.9850	7.2637	0.0114		0.4475	0.4475		0.4117	0.4117		1,103.2158	1,103.2158	0.3568		1,112.1358
Total	0.7750	7.9850	7.2637	0.0114		0.4475	0.4475		0.4117	0.4117		1,103.2158	1,103.2158	0.3568		1,112.1358

#### Unmitigated Construction Off-Site

	ROG	NOx	CO	SO2	Fugitive PM10	Exhaust PM10	PM10 Total	Fugitive PM2.5	Exhaust PM2.5	PM2.5 Total	Bio- CO2	NBio- CO2	Total CO2	CH4	N2O	CO2e
Category	lb/day										lb/day					
Hauling	0.0000	0.0000	0.0000	0.0000	0.0000	0.0000	0.0000	0.0000	0.0000	0.0000		0.0000	0.0000	0.0000		0.0000
Vendor	7.9600e-003	0.2942	0.0556	8.4000e-004	0.0203	5.2000e-004	0.0209	5.8500e-003	5.0000e-004	6.3500e-003		88.8156	88.8156	5.4500e-003		88.9518
Worker	0.0330	0.0191	0.2521	6.5000e-004	0.0657	4.3000e-004	0.0662	0.0174	4.0000e-004	0.0178		64.7796	64.7796	1.8800e-003		64.8265
Total	0.0410	0.3134	0.3077	1.4900e-003	0.0860	9.5000e-004	0.0870	0.0233	9.0000e-004	0.0242		153.5952	153.5952	7.3300e-003		153.7783

#### Mitigated Construction On-Site

	ROG	NOx	CO	SO2	Fugitive PM10	Exhaust PM10	PM10 Total	Fugitive PM2.5	Exhaust PM2.5	PM2.5 Total	Bio- CO2	NBio- CO2	Total CO2	CH4	N2O	CO2e
Category	lb/day										lb/day					
Off-Road	0.7750	7.9850	7.2637	0.0114		0.4475	0.4475		0.4117	0.4117	0.0000	1,103.2158	1,103.2158	0.3568		1,112.1358
Total	0.7750	7.9850	7.2637	0.0114		0.4475	0.4475		0.4117	0.4117	0.0000	1,103.2158	1,103.2158	0.3568		1,112.1358

### Mitigated Construction Off-Site

	ROG	NOx	CO	SO2	Fugitive PM10	Exhaust PM10	PM10 Total	Fugitive PM2.5	Exhaust PM2.5	PM2.5 Total	Bio- CO2	NBio- CO2	Total CO2	CH4	N2O	CO2e
Category	lb/day										lb/day					
Hauling	0.0000	0.0000	0.0000	0.0000	0.0000	0.0000	0.0000	0.0000	0.0000	0.0000		0.0000	0.0000	0.0000		0.0000
Vendor	7.9600e-003	0.2942	0.0556	8.4000e-004	0.0195	5.2000e-004	0.0200	5.6400e-003	5.0000e-004	6.1400e-003		88.8156	88.8156	5.4500e-003		88.9518
Worker	0.0330	0.0191	0.2521	6.5000e-004	0.0623	4.3000e-004	0.0627	0.0166	4.0000e-004	0.0170		64.7796	64.7796	1.8800e-003		64.8265
Total	0.0410	0.3134	0.3077	1.4900e-003	0.0817	9.5000e-004	0.0827	0.0222	9.0000e-004	0.0231		153.5952	153.5952	7.3300e-003		153.7783

### 3.6 Paving - 2021

#### Unmitigated Construction On-Site

	ROG	NOx	CO	SO2	Fugitive PM10	Exhaust PM10	PM10 Total	Fugitive PM2.5	Exhaust PM2.5	PM2.5 Total	Bio- CO2	NBio- CO2	Total CO2	CH4	N2O	CO2e
Category	lb/day										lb/day					

Off-Road	0.7214	6.7178	7.0899	0.0113		0.3534	0.3534		0.3286	0.3286		1,035.3425	1,035.3425	0.3016		1,042.8818
Paving	0.1782					0.0000	0.0000		0.0000	0.0000			0.0000			0.0000
<b>Total</b>	<b>0.8996</b>	<b>6.7178</b>	<b>7.0899</b>	<b>0.0113</b>		<b>0.3534</b>	<b>0.3534</b>		<b>0.3286</b>	<b>0.3286</b>		<b>1,035.3425</b>	<b>1,035.3425</b>	<b>0.3016</b>		<b>1,042.8818</b>

**Unmitigated Construction Off-Site**

	ROG	NOx	CO	SO2	Fugitive PM10	Exhaust PM10	PM10 Total	Fugitive PM2.5	Exhaust PM2.5	PM2.5 Total	Bio- CO2	NBio- CO2	Total CO2	CH4	N2O	CO2e
Category	lb/day										lb/day					
Hauling	0.0000	0.0000	0.0000	0.0000	0.0000	0.0000	0.0000	0.0000	0.0000	0.0000		0.0000	0.0000	0.0000		0.0000
Vendor	0.0000	0.0000	0.0000	0.0000	0.0000	0.0000	0.0000	0.0000	0.0000	0.0000		0.0000	0.0000	0.0000		0.0000
Worker	0.0743	0.0430	0.5672	1.4600e-003	0.1479	9.8000e-004	0.1488	0.0392	9.0000e-004	0.0401		145.7541	145.7541	4.2200e-003		145.8597
<b>Total</b>	<b>0.0743</b>	<b>0.0430</b>	<b>0.5672</b>	<b>1.4600e-003</b>	<b>0.1479</b>	<b>9.8000e-004</b>	<b>0.1488</b>	<b>0.0392</b>	<b>9.0000e-004</b>	<b>0.0401</b>		<b>145.7541</b>	<b>145.7541</b>	<b>4.2200e-003</b>		<b>145.8597</b>

**Mitigated Construction On-Site**

	ROG	NOx	CO	SO2	Fugitive PM10	Exhaust PM10	PM10 Total	Fugitive PM2.5	Exhaust PM2.5	PM2.5 Total	Bio- CO2	NBio- CO2	Total CO2	CH4	N2O	CO2e
Category	lb/day										lb/day					
Off-Road	0.7214	6.7178	7.0899	0.0113		0.3534	0.3534		0.3286	0.3286	0.0000	1,035.3425	1,035.3425	0.3016		1,042.8818
Paving	0.1782					0.0000	0.0000		0.0000	0.0000			0.0000			0.0000
<b>Total</b>	<b>0.8996</b>	<b>6.7178</b>	<b>7.0899</b>	<b>0.0113</b>		<b>0.3534</b>	<b>0.3534</b>		<b>0.3286</b>	<b>0.3286</b>	<b>0.0000</b>	<b>1,035.3425</b>	<b>1,035.3425</b>	<b>0.3016</b>		<b>1,042.8818</b>



**Mitigated Construction Off-Site**

	ROG	NOx	CO	SO2	Fugitive PM10	Exhaust PM10	PM10 Total	Fugitive PM2.5	Exhaust PM2.5	PM2.5 Total	Bio- CO2	NBio- CO2	Total CO2	CH4	N2O	CO2e
Category	lb/day										lb/day					
Hauling	0.0000	0.0000	0.0000	0.0000	0.0000	0.0000	0.0000	0.0000	0.0000	0.0000		0.0000	0.0000	0.0000		0.0000
Vendor	0.0000	0.0000	0.0000	0.0000	0.0000	0.0000	0.0000	0.0000	0.0000	0.0000		0.0000	0.0000	0.0000		0.0000
Worker	0.0743	0.0430	0.5672	1.4600e-003	0.1402	9.8000e-004	0.1411	0.0373	9.0000e-004	0.0382		145.7541	145.7541	4.2200e-003		145.8597
Total	0.0743	0.0430	0.5672	1.4600e-003	0.1402	9.8000e-004	0.1411	0.0373	9.0000e-004	0.0382		145.7541	145.7541	4.2200e-003		145.8597

**3.7 Architectural Coating - 2021**

**Unmitigated Construction On-Site**

	ROG	NOx	CO	SO2	Fugitive PM10	Exhaust PM10	PM10 Total	Fugitive PM2.5	Exhaust PM2.5	PM2.5 Total	Bio- CO2	NBio- CO2	Total CO2	CH4	N2O	CO2e
Category	lb/day										lb/day					
Archit. Coating	2.6313					0.0000	0.0000		0.0000	0.0000			0.0000			0.0000
Off-Road	0.2189	1.5268	1.8176	2.9700e-003		0.0941	0.0941		0.0941	0.0941		281.4481	281.4481	0.0193		281.9309
Total	2.8502	1.5268	1.8176	2.9700e-003		0.0941	0.0941		0.0941	0.0941		281.4481	281.4481	0.0193		281.9309

**Unmitigated Construction Off-Site**

	ROG	NOx	CO	SO2	Fugitive PM10	Exhaust PM10	PM10 Total	Fugitive PM2.5	Exhaust PM2.5	PM2.5 Total	Bio- CO2	NBio- CO2	Total CO2	CH4	N2O	CO2e
--	-----	-----	----	-----	---------------	--------------	------------	----------------	---------------	-------------	----------	-----------	-----------	-----	-----	------

Category	lb/day										lb/day					
	Hauling	0.0000	0.0000	0.0000	0.0000	0.0000	0.0000	0.0000	0.0000	0.0000	0.0000		0.0000	0.0000	0.0000	
Vendor	0.0000	0.0000	0.0000	0.0000	0.0000	0.0000	0.0000	0.0000	0.0000	0.0000		0.0000	0.0000	0.0000		0.0000
Worker	8.2600e-003	4.7800e-003	0.0630	1.6000e-004	0.0164	1.1000e-004	0.0165	4.3600e-003	1.0000e-004	4.4600e-003		16.1949	16.1949	4.7000e-004		16.2066
<b>Total</b>	<b>8.2600e-003</b>	<b>4.7800e-003</b>	<b>0.0630</b>	<b>1.6000e-004</b>	<b>0.0164</b>	<b>1.1000e-004</b>	<b>0.0165</b>	<b>4.3600e-003</b>	<b>1.0000e-004</b>	<b>4.4600e-003</b>		<b>16.1949</b>	<b>16.1949</b>	<b>4.7000e-004</b>		<b>16.2066</b>

**Mitigated Construction On-Site**

	ROG	NOx	CO	SO2	Fugitive PM10	Exhaust PM10	PM10 Total	Fugitive PM2.5	Exhaust PM2.5	PM2.5 Total	Bio- CO2	NBio- CO2	Total CO2	CH4	N2O	CO2e
Category	lb/day										lb/day					
Archit. Coating	2.6313					0.0000	0.0000		0.0000	0.0000			0.0000			0.0000
Off-Road	0.2189	1.5268	1.8176	2.9700e-003		0.0941	0.0941		0.0941	0.0941	0.0000	281.4481	281.4481	0.0193		281.9309
<b>Total</b>	<b>2.8502</b>	<b>1.5268</b>	<b>1.8176</b>	<b>2.9700e-003</b>		<b>0.0941</b>	<b>0.0941</b>		<b>0.0941</b>	<b>0.0941</b>	<b>0.0000</b>	<b>281.4481</b>	<b>281.4481</b>	<b>0.0193</b>		<b>281.9309</b>

**Mitigated Construction Off-Site**

	ROG	NOx	CO	SO2	Fugitive PM10	Exhaust PM10	PM10 Total	Fugitive PM2.5	Exhaust PM2.5	PM2.5 Total	Bio- CO2	NBio- CO2	Total CO2	CH4	N2O	CO2e
Category	lb/day										lb/day					
Hauling	0.0000	0.0000	0.0000	0.0000	0.0000	0.0000	0.0000	0.0000	0.0000	0.0000		0.0000	0.0000	0.0000		0.0000
Vendor	0.0000	0.0000	0.0000	0.0000	0.0000	0.0000	0.0000	0.0000	0.0000	0.0000		0.0000	0.0000	0.0000		0.0000
Worker	8.2600e-003	4.7800e-003	0.0630	1.6000e-004	0.0156	1.1000e-004	0.0157	4.1500e-003	1.0000e-004	4.2500e-003		16.1949	16.1949	4.7000e-004		16.2066

Total	8.2600e-003	4.7800e-003	0.0630	1.6000e-004	0.0156	1.1000e-004	0.0157	4.1500e-003	1.0000e-004	4.2500e-003		16.1949	16.1949	4.7000e-004		16.2066
-------	-------------	-------------	--------	-------------	--------	-------------	--------	-------------	-------------	-------------	--	---------	---------	-------------	--	---------

#### 4.0 Operational Detail - Mobile

#### 4.1 Mitigation Measures Mobile

	ROG	NOx	CO	SO2	Fugitive PM10	Exhaust PM10	PM10 Total	Fugitive PM2.5	Exhaust PM2.5	PM2.5 Total	Bio- CO2	NBio- CO2	Total CO2	CH4	N2O	CO2e
Category	lb/day										lb/day					
Mitigated	6.0139	34.4437	37.7722	0.1294	7.1917	0.0871	7.2787	1.9245	0.0815	2.0060		13,269.6165	13,269.6165	1.0326		13,295.4316
Unmitigated	6.0139	34.4437	37.7722	0.1294	7.1917	0.0871	7.2787	1.9245	0.0815	2.0060		13,269.6165	13,269.6165	1.0326		13,295.4316

#### 4.2 Trip Summary Information

Land Use	Average Daily Trip Rate			Unmitigated	Mitigated
	Weekday	Saturday	Sunday	Annual VMT	Annual VMT
Fast Food Restaurant with Drive Thru	2,480.60	3,610.15	2713.60	2,499,553	2,499,553
Parking Lot	0.00	0.00	0.00		
Total	2,480.60	3,610.15	2,713.60	2,499,553	2,499,553

#### 4.3 Trip Type Information

Land Use	Miles			Trip %			Trip Purpose %		
	H-W or C-W	H-S or C-C	H-O or C-NW	H-W or C-	H-S or C-C	H-O or C-NW	Primary	Diverted	Pass-by
Fast Food Restaurant with Drive	9.50	7.30	7.30	2.20	78.80	19.00	29	21	50
Parking Lot	9.50	7.30	7.30	0.00	0.00	0.00	0	0	0

#### 4.4 Fleet Mix



Land Use	LDA	LDT1	LDT2	MDV	LHD1	LHD2	MHD	HHD	OBUS	UBUS	MCY	SBUS	MH
Fast Food Restaurant with Drive Thru	0.549952	0.037123	0.179649	0.119457	0.017229	0.005267	0.017877	0.062669	0.001348	0.001607	0.006000	0.000812	0.001010
Parking Lot	0.549952	0.037123	0.179649	0.119457	0.017229	0.005267	0.017877	0.062669	0.001348	0.001607	0.006000	0.000812	0.001010

## 5.0 Energy Detail

Historical Energy Use: N

## 5.1 Mitigation Measures Energy

	ROG	NOx	CO	SO2	Fugitive PM10	Exhaust PM10	PM10 Total	Fugitive PM2.5	Exhaust PM2.5	PM2.5 Total	Bio- CO2	NBio- CO2	Total CO2	CH4	N2O	CO2e
Category	lb/day										lb/day					
NaturalGas Mitigated	0.0404	0.3672	0.3085	2.2000e-003		0.0279	0.0279		0.0279	0.0279		440.6769	440.6769	8.4500e-003	8.0800e-003	443.2956
NaturalGas Unmitigated	0.0404	0.3672	0.3085	2.2000e-003		0.0279	0.0279		0.0279	0.0279		440.6769	440.6769	8.4500e-003	8.0800e-003	443.2956

## 5.2 Energy by Land Use - NaturalGas

### Unmitigated

	NaturalGas Use	ROG	NOx	CO	SO2	Fugitive PM10	Exhaust PM10	PM10 Total	Fugitive PM2.5	Exhaust PM2.5	PM2.5 Total	Bio- CO2	NBio- CO2	Total CO2	CH4	N2O	CO2e
Land Use	kBTU/yr	lb/day										lb/day					
Fast Food Restaurant with Drive Thru	3745.75	0.0404	0.3672	0.3085	2.2000e-003		0.0279	0.0279		0.0279	0.0279		440.6769	440.6769	8.4500e-003	8.0800e-003	443.2956
Parking Lot	0	0.0000	0.0000	0.0000	0.0000		0.0000	0.0000		0.0000	0.0000		0.0000	0.0000	0.0000	0.0000	0.0000

Total		0.0404	0.3672	0.3085	2.2000e-003		0.0279	0.0279		0.0279	0.0279		440.6769	440.6769	8.4500e-003	8.0800e-003	443.2956
-------	--	--------	--------	--------	-------------	--	--------	--------	--	--------	--------	--	----------	----------	-------------	-------------	----------

### Mitigated

	Natural Gas Use	ROG	NOx	CO	SO2	Fugitive PM10	Exhaust PM10	PM10 Total	Fugitive PM2.5	Exhaust PM2.5	PM2.5 Total	Bio- CO2	NBio- CO2	Total CO2	CH4	N2O	CO2e	
Land Use	kBTU/yr	lb/day										lb/day						
Fast Food Restaurant with Drive Thru Parking Lot	3.74575	0.0404	0.3672	0.3085	2.2000e-003		0.0279	0.0279		0.0279	0.0279			440.6769	440.6769	8.4500e-003	8.0800e-003	443.2956
	0	0.0000	0.0000	0.0000	0.0000		0.0000	0.0000		0.0000	0.0000			0.0000	0.0000	0.0000	0.0000	0.0000
Total		0.0404	0.3672	0.3085	2.2000e-003		0.0279	0.0279		0.0279	0.0279			440.6769	440.6769	8.4500e-003	8.0800e-003	443.2956

### 6.0 Area Detail

#### 6.1 Mitigation Measures Area

	ROG	NOx	CO	SO2	Fugitive PM10	Exhaust PM10	PM10 Total	Fugitive PM2.5	Exhaust PM2.5	PM2.5 Total	Bio- CO2	NBio- CO2	Total CO2	CH4	N2O	CO2e
Category	lb/day										lb/day					
Mitigated	0.1473	3.0000e-005	3.5900e-003	0.0000		1.0000e-005	1.0000e-005		1.0000e-005	1.0000e-005			7.6600e-003	7.6600e-003	2.0000e-005	8.1700e-003
Unmitigated	0.1473	3.0000e-005	3.5900e-003	0.0000		1.0000e-005	1.0000e-005		1.0000e-005	1.0000e-005			7.6600e-003	7.6600e-003	2.0000e-005	8.1700e-003

#### 6.2 Area by SubCategory

**Unmitigated**

	ROG	NOx	CO	SO2	Fugitive PM10	Exhaust PM10	PM10 Total	Fugitive PM2.5	Exhaust PM2.5	PM2.5 Total	Bio- CO2	NBio- CO2	Total CO2	CH4	N2O	CO2e
SubCategory	lb/day										lb/day					
Architectural Coating	0.0346					0.0000	0.0000		0.0000	0.0000			0.0000			0.0000
Consumer Products	0.1123					0.0000	0.0000		0.0000	0.0000			0.0000			0.0000
Landscaping	3.4000e-004	3.0000e-005	3.5900e-003	0.0000		1.0000e-005	1.0000e-005		1.0000e-005	1.0000e-005		7.6600e-003	7.6600e-003	2.0000e-005		8.1700e-003
<b>Total</b>	<b>0.1473</b>	<b>3.0000e-005</b>	<b>3.5900e-003</b>	<b>0.0000</b>		<b>1.0000e-005</b>	<b>1.0000e-005</b>		<b>1.0000e-005</b>	<b>1.0000e-005</b>		<b>7.6600e-003</b>	<b>7.6600e-003</b>	<b>2.0000e-005</b>		<b>8.1700e-003</b>

**Mitigated**

	ROG	NOx	CO	SO2	Fugitive PM10	Exhaust PM10	PM10 Total	Fugitive PM2.5	Exhaust PM2.5	PM2.5 Total	Bio- CO2	NBio- CO2	Total CO2	CH4	N2O	CO2e
SubCategory	lb/day										lb/day					
Architectural Coating	0.0346					0.0000	0.0000		0.0000	0.0000			0.0000			0.0000
Consumer Products	0.1123					0.0000	0.0000		0.0000	0.0000			0.0000			0.0000
Landscaping	3.4000e-004	3.0000e-005	3.5900e-003	0.0000		1.0000e-005	1.0000e-005		1.0000e-005	1.0000e-005		7.6600e-003	7.6600e-003	2.0000e-005		8.1700e-003
<b>Total</b>	<b>0.1473</b>	<b>3.0000e-005</b>	<b>3.5900e-003</b>	<b>0.0000</b>		<b>1.0000e-005</b>	<b>1.0000e-005</b>		<b>1.0000e-005</b>	<b>1.0000e-005</b>		<b>7.6600e-003</b>	<b>7.6600e-003</b>	<b>2.0000e-005</b>		<b>8.1700e-003</b>

**7.0 Water Detail**

**7.1 Mitigation Measures Water**

Install Low Flow Bathroom Faucet

Install Low Flow Kitchen Faucet

Install Low Flow Toilet

Install Low Flow Shower

Use Water Efficient Irrigation System

## 8.0 Waste Detail

---

### 8.1 Mitigation Measures Waste

Institute Recycling and Composting Services

## 9.0 Operational Offroad

---

Equipment Type	Number	Hours/Day	Days/Year	Horse Power	Load Factor	Fuel Type
----------------	--------	-----------	-----------	-------------	-------------	-----------

## 10.0 Stationary Equipment

---

### Fire Pumps and Emergency Generators

Equipment Type	Number	Hours/Day	Hours/Year	Horse Power	Load Factor	Fuel Type
----------------	--------	-----------	------------	-------------	-------------	-----------

### Boilers

Equipment Type	Number	Heat Input/Day	Heat Input/Year	Boiler Rating	Fuel Type
----------------	--------	----------------	-----------------	---------------	-----------

### User Defined Equipment

Equipment Type	Number
----------------	--------

## 11.0 Vegetation

---



Yucca Valley Dominos - San Bernardino-Mojave Desert County, Winter

**Yucca Valley Dominos**  
**San Bernardino-Mojave Desert County, Winter**

**1.0 Project Characteristics**

**1.1 Land Usage**

Land Uses	Size	Metric	Lot Acreage	Floor Surface Area	Population
Fast Food Restaurant with Drive Thru	5.00	1000sqft	0.11	5,000.00	0
Parking Lot	30.00	Space	0.34	15,000.00	0

**1.2 Other Project Characteristics**

Urbanization	Urban	Wind Speed (m/s)	2.6	Precipitation Freq (Days)	32
Climate Zone	10			Operational Year	2021
Utility Company	Southern California Edison				
CO2 Intensity (lb/MWhr)	702.44	CH4 Intensity (lb/MWhr)	0.029	N2O Intensity (lb/MWhr)	0.006

**1.3 User Entered Comments & Non-Default Data**

- Project Characteristics -
- Land Use - Parking area adjusted to match other paved areas
- Construction Phase - Anticipated schedule
- Demolition -
- Construction Off-road Equipment Mitigation - MDAQMD Rule Compliance 403
- Water Mitigation -
- Waste Mitigation - per Ab 939

Table Name	Column Name	Default Value	New Value
------------	-------------	---------------	-----------

tblConstDustMitigation	CleanPavedRoadPercentReduction	0	6
tblConstDustMitigation	WaterUnpavedRoadMoistureContent	0	12
tblConstDustMitigation	WaterUnpavedRoadVehicleSpeed	0	15
tblConstructionPhase	NumDays	5.00	48.00
tblConstructionPhase	NumDays	100.00	94.00
tblConstructionPhase	PhaseEndDate	6/22/2021	6/7/2021
tblConstructionPhase	PhaseEndDate	6/8/2021	5/31/2021
tblConstructionPhase	PhaseEndDate	6/15/2021	6/7/2021
tblConstructionPhase	PhaseStartDate	6/16/2021	4/1/2021
tblConstructionPhase	PhaseStartDate	6/9/2021	6/1/2021
tblLandUse	LandUseSquareFeet	12,000.00	15,000.00
tblLandUse	LotAcreage	0.27	0.34

## 2.0 Emissions Summary

### 2.1 Overall Construction (Maximum Daily Emission)

#### Unmitigated Construction

	ROG	NOx	CO	SO2	Fugitive PM10	Exhaust PM10	PM10 Total	Fugitive PM2.5	Exhaust PM2.5	PM2.5 Total	Bio- CO2	NBio- CO2	Total CO2	CH4	N2O	CO2e
Year	lb/day										lb/day					
2021	3.8306	9.8283	9.4319	0.0187	1.9537	0.5427	2.3667	0.4356	0.5068	0.8247	0.0000	1,854.9321	1,854.9321	0.3842	0.0000	1,861.2786
Maximum	3.8306	9.8283	9.4319	0.0187	1.9537	0.5427	2.3667	0.4356	0.5068	0.8247	0.0000	1,854.9321	1,854.9321	0.3842	0.0000	1,861.2786

#### Mitigated Construction

	ROG	NOx	CO	SO2	Fugitive PM10	Exhaust PM10	PM10 Total	Fugitive PM2.5	Exhaust PM2.5	PM2.5 Total	Bio- CO2	NBio- CO2	Total CO2	CH4	N2O	CO2e
Year	lb/day										lb/day					
2021	3.8306	9.8283	9.4319	0.0187	0.9508	0.5427	1.3639	0.1976	0.5068	0.5867	0.0000	1,854.9321	1,854.9321	0.3842	0.0000	1,861.2786
Maximum	3.8306	9.8283	9.4319	0.0187	0.9508	0.5427	1.3639	0.1976	0.5068	0.5867	0.0000	1,854.9321	1,854.9321	0.3842	0.0000	1,861.2786

	ROG	NOx	CO	SO2	Fugitive PM10	Exhaust PM10	PM10 Total	Fugitive PM2.5	Exhaust PM2.5	PM2.5 Total	Bio- CO2	NBio- CO2	Total CO2	CH4	N2O	CO2e
Percent Reduction	0.00	0.00	0.00	0.00	51.33	0.00	42.37	54.63	0.00	28.85	0.00	0.00	0.00	0.00	0.00	0.00

## 2.2 Overall Operational

### Unmitigated Operational

	ROG	NOx	CO	SO2	Fugitive PM10	Exhaust PM10	PM10 Total	Fugitive PM2.5	Exhaust PM2.5	PM2.5 Total	Bio- CO2	NBio- CO2	Total CO2	CH4	N2O	CO2e
Category	lb/day										lb/day					
Area	0.1473	3.0000e-005	3.5900e-003	0.0000		1.0000e-005	1.0000e-005		1.0000e-005	1.0000e-005		7.6600e-003	7.6600e-003	2.0000e-005		8.1700e-003
Energy	0.0404	0.3672	0.3085	2.2000e-003		0.0279	0.0279		0.0279	0.0279		440.6769	440.6769	8.4500e-003	8.0800e-003	443.2956
Mobile	5.1148	33.7645	36.8831	0.1182	7.1917	0.0891	7.2808	1.9245	0.0835	2.0080		12,121.7042	12,121.7042	1.1111		12,149.4811
Total	5.3025	34.1317	37.1951	0.1204	7.1917	0.1170	7.3087	1.9245	0.1114	2.0359		12,562.3887	12,562.3887	1.1195	8.0800e-003	12,592.7848

### Mitigated Operational

	ROG	NOx	CO	SO2	Fugitive PM10	Exhaust PM10	PM10 Total	Fugitive PM2.5	Exhaust PM2.5	PM2.5 Total	Bio- CO2	NBio- CO2	Total CO2	CH4	N2O	CO2e
--	-----	-----	----	-----	---------------	--------------	------------	----------------	---------------	-------------	----------	-----------	-----------	-----	-----	------

Category	lb/day										lb/day						
	Area	0.1473	3.0000e-005	3.5900e-003	0.0000		1.0000e-005	1.0000e-005		1.0000e-005	1.0000e-005		7.6600e-003	7.6600e-003	2.0000e-005		8.1700e-003
Energy	0.0404	0.3672	0.3085	2.2000e-003		0.0279	0.0279		0.0279	0.0279		440.6769	440.6769	8.4500e-003	8.0800e-003		443.2956
Mobile	5.1148	33.7645	36.8831	0.1182	7.1917	0.0891	7.2808	1.9245	0.0835	2.0080		12,121.7042	12,121.7042	1.1111			12,149.4811
<b>Total</b>	<b>5.3025</b>	<b>34.1317</b>	<b>37.1951</b>	<b>0.1204</b>	<b>7.1917</b>	<b>0.1170</b>	<b>7.3087</b>	<b>1.9245</b>	<b>0.1114</b>	<b>2.0359</b>		<b>12,562.3887</b>	<b>12,562.3887</b>	<b>1.1195</b>	<b>8.0800e-003</b>		<b>12,592.7848</b>

	ROG	NOx	CO	SO2	Fugitive PM10	Exhaust PM10	PM10 Total	Fugitive PM2.5	Exhaust PM2.5	PM2.5 Total	Bio-CO2	NBio-CO2	Total CO2	CH4	N2O	CO2e
Percent Reduction	0.00	0.00	0.00	0.00	0.00	0.00	0.00	0.00	0.00	0.00	0.00	0.00	0.00	0.00	0.00	0.00

### 3.0 Construction Detail

#### Construction Phase

Phase Number	Phase Name	Phase Type	Start Date	End Date	Num Days Week	Num Days	Phase Description
1	Demolition	Demolition	1/1/2021	1/14/2021	5	10	
2	Site Preparation	Site Preparation	1/15/2021	1/15/2021	5	1	
3	Grading	Grading	1/16/2021	1/19/2021	5	2	
4	Building Construction	Building Construction	1/20/2021	5/31/2021	5	94	
5	Paving	Paving	6/1/2021	6/7/2021	5	5	
6	Architectural Coating	Architectural Coating	4/1/2021	6/7/2021	5	48	

Acres of Grading (Site Preparation Phase): 0.5

Acres of Grading (Grading Phase): 0

Acres of Paving: 0.34

Residential Indoor: 0; Residential Outdoor: 0; Non-Residential Indoor: 7,500; Non-Residential Outdoor: 2,500; Striped Parking Area: 900

#### OffRoad Equipment

Phase Name	Offroad Equipment Type	Amount	Usage Hours	Horse Power	Load Factor
Architectural Coating	Air Compressors	1	6.00	78	0.48



Paving	Cement and Mortar Mixers	4	6.00	9	0.56
Demolition	Concrete/Industrial Saws	1	8.00	81	0.73
Grading	Concrete/Industrial Saws	1	8.00	81	0.73
Building Construction	Cranes	1	4.00	231	0.29
Building Construction	Forklifts	2	6.00	89	0.20
Site Preparation	Graders	1	8.00	187	0.41
Paving	Pavers	1	7.00	130	0.42
Paving	Rollers	1	7.00	80	0.38
Demolition	Rubber Tired Dozers	1	1.00	247	0.40
Grading	Rubber Tired Dozers	1	1.00	247	0.40
Building Construction	Tractors/Loaders/Backhoes	2	8.00	97	0.37
Demolition	Tractors/Loaders/Backhoes	2	6.00	97	0.37
Grading	Tractors/Loaders/Backhoes	2	6.00	97	0.37
Paving	Tractors/Loaders/Backhoes	1	7.00	97	0.37
Site Preparation	Tractors/Loaders/Backhoes	1	8.00	97	0.37

### Trips and VMT

Phase Name	Offroad Equipment Count	Worker Trip Number	Vendor Trip Number	Hauling Trip Number	Worker Trip Length	Vendor Trip Length	Hauling Trip Length	Worker Vehicle Class	Vendor Vehicle Class	Hauling Vehicle Class
Demolition	4	10.00	0.00	79.00	10.80	7.30	20.00	LD_Mix	HDT_Mix	HHDT
Site Preparation	2	5.00	0.00	0.00	10.80	7.30	20.00	LD_Mix	HDT_Mix	HHDT
Grading	4	10.00	0.00	0.00	10.80	7.30	20.00	LD_Mix	HDT_Mix	HHDT
Building Construction	5	8.00	3.00	0.00	10.80	7.30	20.00	LD_Mix	HDT_Mix	HHDT
Paving	7	18.00	0.00	0.00	10.80	7.30	20.00	LD_Mix	HDT_Mix	HHDT
Architectural Coating	1	2.00	0.00	0.00	10.80	7.30	20.00	LD_Mix	HDT_Mix	HHDT

### 3.1 Mitigation Measures Construction

Replace Ground Cover

Water Exposed Area

Water Unpaved Roads

Reduce Vehicle Speed on Unpaved Roads

Clean Paved Roads

### 3.2 Demolition - 2021

#### Unmitigated Construction On-Site

	ROG	NOx	CO	SO2	Fugitive PM10	Exhaust PM10	PM10 Total	Fugitive PM2.5	Exhaust PM2.5	PM2.5 Total	Bio- CO2	NBio- CO2	Total CO2	CH4	N2O	CO2e
Category	lb/day										lb/day					
Fugitive Dust					1.7333	0.0000	1.7333	0.2625	0.0000	0.2625			0.0000			0.0000
Off-Road	0.7965	7.2530	7.5691	0.0120		0.4073	0.4073		0.3886	0.3886		1,147.4338	1,147.4338	0.2138		1,152.7797
Total	0.7965	7.2530	7.5691	0.0120	1.7333	0.4073	2.1406	0.2625	0.3886	0.6511		1,147.4338	1,147.4338	0.2138		1,152.7797

#### Unmitigated Construction Off-Site

	ROG	NOx	CO	SO2	Fugitive PM10	Exhaust PM10	PM10 Total	Fugitive PM2.5	Exhaust PM2.5	PM2.5 Total	Bio- CO2	NBio- CO2	Total CO2	CH4	N2O	CO2e
Category	lb/day										lb/day					
Hauling	0.0491	1.8087	0.3187	5.9800e-003	0.1383	5.1700e-003	0.1434	0.0379	4.9400e-003	0.0429		634.8154	634.8154	0.0380		635.7641
Vendor	0.0000	0.0000	0.0000	0.0000	0.0000	0.0000	0.0000	0.0000	0.0000	0.0000		0.0000	0.0000	0.0000		0.0000
Worker	0.0404	0.0252	0.2623	7.3000e-004	0.0822	5.4000e-004	0.0827	0.0218	5.0000e-004	0.0223		72.6829	72.6829	2.0700e-003		72.7348
Total	0.0895	1.8338	0.5810	6.7100e-003	0.2204	5.7100e-003	0.2261	0.0597	5.4400e-003	0.0651		707.4983	707.4983	0.0400		708.4989

#### Mitigated Construction On-Site

	ROG	NOx	CO	SO2	Fugitive PM10	Exhaust PM10	PM10 Total	Fugitive PM2.5	Exhaust PM2.5	PM2.5 Total	Bio- CO2	NBio- CO2	Total CO2	CH4	N2O	CO2e
Category	lb/day										lb/day					
Fugitive Dust					0.7410	0.0000	0.7410	0.1122	0.0000	0.1122			0.0000			0.0000
Off-Road	0.7965	7.2530	7.5691	0.0120		0.4073	0.4073		0.3886	0.3886	0.0000	1,147.4338	1,147.4338	0.2138		1,152.7797
Total	0.7965	7.2530	7.5691	0.0120	0.7410	0.4073	1.1483	0.1122	0.3886	0.5008	0.0000	1,147.4338	1,147.4338	0.2138		1,152.7797

### Mitigated Construction Off-Site

	ROG	NOx	CO	SO2	Fugitive PM10	Exhaust PM10	PM10 Total	Fugitive PM2.5	Exhaust PM2.5	PM2.5 Total	Bio- CO2	NBio- CO2	Total CO2	CH4	N2O	CO2e
Category	lb/day										lb/day					
Hauling	0.0491	1.8087	0.3187	5.9800e-003	0.1320	5.1700e-003	0.1372	0.0364	4.9400e-003	0.0413		634.8154	634.8154	0.0380		635.7641
Vendor	0.0000	0.0000	0.0000	0.0000	0.0000	0.0000	0.0000	0.0000	0.0000	0.0000		0.0000	0.0000	0.0000		0.0000
Worker	0.0404	0.0252	0.2623	7.3000e-004	0.0779	5.4000e-004	0.0784	0.0207	5.0000e-004	0.0212		72.6829	72.6829	2.0700e-003		72.7348
Total	0.0895	1.8338	0.5810	6.7100e-003	0.2098	5.7100e-003	0.2156	0.0571	5.4400e-003	0.0626		707.4983	707.4983	0.0400		708.4989

### 3.3 Site Preparation - 2021

#### Unmitigated Construction On-Site

	ROG	NOx	CO	SO2	Fugitive PM10	Exhaust PM10	PM10 Total	Fugitive PM2.5	Exhaust PM2.5	PM2.5 Total	Bio- CO2	NBio- CO2	Total CO2	CH4	N2O	CO2e
Category	lb/day										lb/day					

Fugitive Dust					0.5303	0.0000	0.5303	0.0573	0.0000	0.0573			0.0000			0.0000
Off-Road	0.6403	7.8204	4.0274	9.7300e-003		0.2995	0.2995		0.2755	0.2755		942.5842	942.5842	0.3049		950.2055
<b>Total</b>	<b>0.6403</b>	<b>7.8204</b>	<b>4.0274</b>	<b>9.7300e-003</b>	<b>0.5303</b>	<b>0.2995</b>	<b>0.8297</b>	<b>0.0573</b>	<b>0.2755</b>	<b>0.3328</b>		<b>942.5842</b>	<b>942.5842</b>	<b>0.3049</b>		<b>950.2055</b>

**Unmitigated Construction Off-Site**

	ROG	NOx	CO	SO2	Fugitive PM10	Exhaust PM10	PM10 Total	Fugitive PM2.5	Exhaust PM2.5	PM2.5 Total	Bio- CO2	NBio- CO2	Total CO2	CH4	N2O	CO2e
Category	lb/day										lb/day					
Hauling	0.0000	0.0000	0.0000	0.0000	0.0000	0.0000	0.0000	0.0000	0.0000	0.0000		0.0000	0.0000	0.0000		0.0000
Vendor	0.0000	0.0000	0.0000	0.0000	0.0000	0.0000	0.0000	0.0000	0.0000	0.0000		0.0000	0.0000	0.0000		0.0000
Worker	0.0202	0.0126	0.1311	3.6000e-004	0.0411	2.7000e-004	0.0414	0.0109	2.5000e-004	0.0111		36.3415	36.3415	1.0400e-003		36.3674
<b>Total</b>	<b>0.0202</b>	<b>0.0126</b>	<b>0.1311</b>	<b>3.6000e-004</b>	<b>0.0411</b>	<b>2.7000e-004</b>	<b>0.0414</b>	<b>0.0109</b>	<b>2.5000e-004</b>	<b>0.0111</b>		<b>36.3415</b>	<b>36.3415</b>	<b>1.0400e-003</b>		<b>36.3674</b>

**Mitigated Construction On-Site**

	ROG	NOx	CO	SO2	Fugitive PM10	Exhaust PM10	PM10 Total	Fugitive PM2.5	Exhaust PM2.5	PM2.5 Total	Bio- CO2	NBio- CO2	Total CO2	CH4	N2O	CO2e
Category	lb/day										lb/day					
Fugitive Dust					0.2267	0.0000	0.2267	0.0245	0.0000	0.0245			0.0000			0.0000
Off-Road	0.6403	7.8204	4.0274	9.7300e-003		0.2995	0.2995		0.2755	0.2755	0.0000	942.5842	942.5842	0.3049		950.2055
<b>Total</b>	<b>0.6403</b>	<b>7.8204</b>	<b>4.0274</b>	<b>9.7300e-003</b>	<b>0.2267</b>	<b>0.2995</b>	<b>0.5262</b>	<b>0.0245</b>	<b>0.2755</b>	<b>0.3000</b>	<b>0.0000</b>	<b>942.5842</b>	<b>942.5842</b>	<b>0.3049</b>		<b>950.2055</b>



**Mitigated Construction Off-Site**

	ROG	NOx	CO	SO2	Fugitive PM10	Exhaust PM10	PM10 Total	Fugitive PM2.5	Exhaust PM2.5	PM2.5 Total	Bio- CO2	NBio- CO2	Total CO2	CH4	N2O	CO2e
Category	lb/day										lb/day					
Hauling	0.0000	0.0000	0.0000	0.0000	0.0000	0.0000	0.0000	0.0000	0.0000	0.0000		0.0000	0.0000	0.0000		0.0000
Vendor	0.0000	0.0000	0.0000	0.0000	0.0000	0.0000	0.0000	0.0000	0.0000	0.0000		0.0000	0.0000	0.0000		0.0000
Worker	0.0202	0.0126	0.1311	3.6000e-004	0.0389	2.7000e-004	0.0392	0.0104	2.5000e-004	0.0106		36.3415	36.3415	1.0400e-003		36.3674
<b>Total</b>	<b>0.0202</b>	<b>0.0126</b>	<b>0.1311</b>	<b>3.6000e-004</b>	<b>0.0389</b>	<b>2.7000e-004</b>	<b>0.0392</b>	<b>0.0104</b>	<b>2.5000e-004</b>	<b>0.0106</b>		<b>36.3415</b>	<b>36.3415</b>	<b>1.0400e-003</b>		<b>36.3674</b>

**3.4 Grading - 2021**

**Unmitigated Construction On-Site**

	ROG	NOx	CO	SO2	Fugitive PM10	Exhaust PM10	PM10 Total	Fugitive PM2.5	Exhaust PM2.5	PM2.5 Total	Bio- CO2	NBio- CO2	Total CO2	CH4	N2O	CO2e
Category	lb/day										lb/day					
Fugitive Dust					0.7528	0.0000	0.7528	0.4138	0.0000	0.4138			0.0000			0.0000
Off-Road	0.7965	7.2530	7.5691	0.0120		0.4073	0.4073		0.3886	0.3886		1,147.4338	1,147.4338	0.2138		1,152.7797
<b>Total</b>	<b>0.7965</b>	<b>7.2530</b>	<b>7.5691</b>	<b>0.0120</b>	<b>0.7528</b>	<b>0.4073</b>	<b>1.1601</b>	<b>0.4138</b>	<b>0.3886</b>	<b>0.8024</b>		<b>1,147.4338</b>	<b>1,147.4338</b>	<b>0.2138</b>		<b>1,152.7797</b>

**Unmitigated Construction Off-Site**

	ROG	NOx	CO	SO2	Fugitive PM10	Exhaust PM10	PM10 Total	Fugitive PM2.5	Exhaust PM2.5	PM2.5 Total	Bio- CO2	NBio- CO2	Total CO2	CH4	N2O	CO2e
--	-----	-----	----	-----	---------------	--------------	------------	----------------	---------------	-------------	----------	-----------	-----------	-----	-----	------

Category	lb/day										lb/day					
Hauling	0.0000	0.0000	0.0000	0.0000	0.0000	0.0000	0.0000	0.0000	0.0000	0.0000		0.0000	0.0000	0.0000		0.0000
Vendor	0.0000	0.0000	0.0000	0.0000	0.0000	0.0000	0.0000	0.0000	0.0000	0.0000		0.0000	0.0000	0.0000		0.0000
Worker	0.0404	0.0252	0.2623	7.3000e-004	0.0822	5.4000e-004	0.0827	0.0218	5.0000e-004	0.0223		72.6829	72.6829	2.0700e-003		72.7348
Total	0.0404	0.0252	0.2623	7.3000e-004	0.0822	5.4000e-004	0.0827	0.0218	5.0000e-004	0.0223		72.6829	72.6829	2.0700e-003		72.7348

**Mitigated Construction On-Site**

	ROG	NOx	CO	SO2	Fugitive PM10	Exhaust PM10	PM10 Total	Fugitive PM2.5	Exhaust PM2.5	PM2.5 Total	Bio- CO2	NBio- CO2	Total CO2	CH4	N2O	CO2e
Category	lb/day										lb/day					
Fugitive Dust					0.3218	0.0000	0.3218	0.1769	0.0000	0.1769			0.0000			0.0000
Off-Road	0.7965	7.2530	7.5691	0.0120		0.4073	0.4073		0.3886	0.3886	0.0000	1,147.4338	1,147.4338	0.2138		1,152.7797
Total	0.7965	7.2530	7.5691	0.0120	0.3218	0.4073	0.7292	0.1769	0.3886	0.5655	0.0000	1,147.4338	1,147.4338	0.2138		1,152.7797

**Mitigated Construction Off-Site**

	ROG	NOx	CO	SO2	Fugitive PM10	Exhaust PM10	PM10 Total	Fugitive PM2.5	Exhaust PM2.5	PM2.5 Total	Bio- CO2	NBio- CO2	Total CO2	CH4	N2O	CO2e
Category	lb/day										lb/day					
Hauling	0.0000	0.0000	0.0000	0.0000	0.0000	0.0000	0.0000	0.0000	0.0000	0.0000		0.0000	0.0000	0.0000		0.0000
Vendor	0.0000	0.0000	0.0000	0.0000	0.0000	0.0000	0.0000	0.0000	0.0000	0.0000		0.0000	0.0000	0.0000		0.0000
Worker	0.0404	0.0252	0.2623	7.3000e-004	0.0779	5.4000e-004	0.0784	0.0207	5.0000e-004	0.0212		72.6829	72.6829	2.0700e-003		72.7348

Total	0.0404	0.0252	0.2623	7.3000e-004	0.0779	5.4000e-004	0.0784	0.0207	5.0000e-004	0.0212		72.6829	72.6829	2.0700e-003		72.7348
-------	--------	--------	--------	-------------	--------	-------------	--------	--------	-------------	--------	--	---------	---------	-------------	--	---------

### 3.5 Building Construction - 2021

#### Unmitigated Construction On-Site

	ROG	NOx	CO	SO2	Fugitive PM10	Exhaust PM10	PM10 Total	Fugitive PM2.5	Exhaust PM2.5	PM2.5 Total	Bio- CO2	NBio- CO2	Total CO2	CH4	N2O	CO2e	
Category	lb/day										lb/day						
Off-Road	0.7750	7.9850	7.2637	0.0114		0.4475	0.4475		0.4117	0.4117			1,103.2158	1,103.2158	0.3568		1,112.1358
Total	0.7750	7.9850	7.2637	0.0114		0.4475	0.4475		0.4117	0.4117			1,103.2158	1,103.2158	0.3568		1,112.1358

#### Unmitigated Construction Off-Site

	ROG	NOx	CO	SO2	Fugitive PM10	Exhaust PM10	PM10 Total	Fugitive PM2.5	Exhaust PM2.5	PM2.5 Total	Bio- CO2	NBio- CO2	Total CO2	CH4	N2O	CO2e
Category	lb/day										lb/day					
Hauling	0.0000	0.0000	0.0000	0.0000	0.0000	0.0000	0.0000	0.0000	0.0000	0.0000			0.0000	0.0000	0.0000	0.0000
Vendor	8.4300e-003	0.2914	0.0649	8.1000e-004	0.0203	5.4000e-004	0.0209	5.8500e-003	5.1000e-004	6.3600e-003			85.4993	85.4993	6.0300e-003	85.6502
Worker	0.0323	0.0201	0.2098	5.8000e-004	0.0657	4.3000e-004	0.0662	0.0174	4.0000e-004	0.0178			58.1463	58.1463	1.6600e-003	58.1878
Total	0.0408	0.3115	0.2747	1.3900e-003	0.0860	9.7000e-004	0.0870	0.0233	9.1000e-004	0.0242			143.6457	143.6457	7.6900e-003	143.8380

#### Mitigated Construction On-Site

	ROG	NOx	CO	SO2	Fugitive PM10	Exhaust PM10	PM10 Total	Fugitive PM2.5	Exhaust PM2.5	PM2.5 Total	Bio- CO2	NBio- CO2	Total CO2	CH4	N2O	CO2e
Category	lb/day										lb/day					
Off-Road	0.7750	7.9850	7.2637	0.0114		0.4475	0.4475		0.4117	0.4117	0.0000	1,103.2158	1,103.2158	0.3568		1,112.1358
Total	0.7750	7.9850	7.2637	0.0114		0.4475	0.4475		0.4117	0.4117	0.0000	1,103.2158	1,103.2158	0.3568		1,112.1358

**Mitigated Construction Off-Site**

	ROG	NOx	CO	SO2	Fugitive PM10	Exhaust PM10	PM10 Total	Fugitive PM2.5	Exhaust PM2.5	PM2.5 Total	Bio- CO2	NBio- CO2	Total CO2	CH4	N2O	CO2e
Category	lb/day										lb/day					
Hauling	0.0000	0.0000	0.0000	0.0000	0.0000	0.0000	0.0000	0.0000	0.0000	0.0000		0.0000	0.0000	0.0000		0.0000
Vendor	8.4300e-003	0.2914	0.0649	8.1000e-004	0.0195	5.4000e-004	0.0200	5.6400e-003	5.1000e-004	6.1500e-003		85.4993	85.4993	6.0300e-003		85.6502
Worker	0.0323	0.0201	0.2098	5.8000e-004	0.0623	4.3000e-004	0.0627	0.0166	4.0000e-004	0.0170		58.1463	58.1463	1.6600e-003		58.1878
Total	0.0408	0.3115	0.2747	1.3900e-003	0.0817	9.7000e-004	0.0827	0.0222	9.1000e-004	0.0231		143.6457	143.6457	7.6900e-003		143.8380

**3.6 Paving - 2021**

**Unmitigated Construction On-Site**

	ROG	NOx	CO	SO2	Fugitive PM10	Exhaust PM10	PM10 Total	Fugitive PM2.5	Exhaust PM2.5	PM2.5 Total	Bio- CO2	NBio- CO2	Total CO2	CH4	N2O	CO2e
Category	lb/day										lb/day					



Off-Road	0.7214	6.7178	7.0899	0.0113		0.3534	0.3534		0.3286	0.3286		1,035.3425	1,035.3425	0.3016		1,042.8818
Paving	0.1782					0.0000	0.0000		0.0000	0.0000			0.0000			0.0000
<b>Total</b>	<b>0.8996</b>	<b>6.7178</b>	<b>7.0899</b>	<b>0.0113</b>		<b>0.3534</b>	<b>0.3534</b>		<b>0.3286</b>	<b>0.3286</b>		<b>1,035.3425</b>	<b>1,035.3425</b>	<b>0.3016</b>		<b>1,042.8818</b>

**Unmitigated Construction Off-Site**

	ROG	NOx	CO	SO2	Fugitive PM10	Exhaust PM10	PM10 Total	Fugitive PM2.5	Exhaust PM2.5	PM2.5 Total	Bio- CO2	NBio- CO2	Total CO2	CH4	N2O	CO2e
Category	lb/day										lb/day					
Hauling	0.0000	0.0000	0.0000	0.0000	0.0000	0.0000	0.0000	0.0000	0.0000	0.0000		0.0000	0.0000	0.0000		0.0000
Vendor	0.0000	0.0000	0.0000	0.0000	0.0000	0.0000	0.0000	0.0000	0.0000	0.0000		0.0000	0.0000	0.0000		0.0000
Worker	0.0728	0.0453	0.4720	1.3100e-003	0.1479	9.8000e-004	0.1488	0.0392	9.0000e-004	0.0401		130.8293	130.8293	3.7300e-003		130.9226
<b>Total</b>	<b>0.0728</b>	<b>0.0453</b>	<b>0.4720</b>	<b>1.3100e-003</b>	<b>0.1479</b>	<b>9.8000e-004</b>	<b>0.1488</b>	<b>0.0392</b>	<b>9.0000e-004</b>	<b>0.0401</b>		<b>130.8293</b>	<b>130.8293</b>	<b>3.7300e-003</b>		<b>130.9226</b>

**Mitigated Construction On-Site**

	ROG	NOx	CO	SO2	Fugitive PM10	Exhaust PM10	PM10 Total	Fugitive PM2.5	Exhaust PM2.5	PM2.5 Total	Bio- CO2	NBio- CO2	Total CO2	CH4	N2O	CO2e
Category	lb/day										lb/day					
Off-Road	0.7214	6.7178	7.0899	0.0113		0.3534	0.3534		0.3286	0.3286	0.0000	1,035.3425	1,035.3425	0.3016		1,042.8818
Paving	0.1782					0.0000	0.0000		0.0000	0.0000			0.0000			0.0000
<b>Total</b>	<b>0.8996</b>	<b>6.7178</b>	<b>7.0899</b>	<b>0.0113</b>		<b>0.3534</b>	<b>0.3534</b>		<b>0.3286</b>	<b>0.3286</b>	<b>0.0000</b>	<b>1,035.3425</b>	<b>1,035.3425</b>	<b>0.3016</b>		<b>1,042.8818</b>

**Mitigated Construction Off-Site**

	ROG	NOx	CO	SO2	Fugitive PM10	Exhaust PM10	PM10 Total	Fugitive PM2.5	Exhaust PM2.5	PM2.5 Total	Bio- CO2	NBio- CO2	Total CO2	CH4	N2O	CO2e
Category	lb/day										lb/day					
Hauling	0.0000	0.0000	0.0000	0.0000	0.0000	0.0000	0.0000	0.0000	0.0000	0.0000		0.0000	0.0000	0.0000		0.0000
Vendor	0.0000	0.0000	0.0000	0.0000	0.0000	0.0000	0.0000	0.0000	0.0000	0.0000		0.0000	0.0000	0.0000		0.0000
Worker	0.0728	0.0453	0.4720	1.3100e-003	0.1402	9.8000e-004	0.1411	0.0373	9.0000e-004	0.0382		130.8293	130.8293	3.7300e-003		130.9226
<b>Total</b>	<b>0.0728</b>	<b>0.0453</b>	<b>0.4720</b>	<b>1.3100e-003</b>	<b>0.1402</b>	<b>9.8000e-004</b>	<b>0.1411</b>	<b>0.0373</b>	<b>9.0000e-004</b>	<b>0.0382</b>		<b>130.8293</b>	<b>130.8293</b>	<b>3.7300e-003</b>		<b>130.9226</b>

**3.7 Architectural Coating - 2021**

**Unmitigated Construction On-Site**

	ROG	NOx	CO	SO2	Fugitive PM10	Exhaust PM10	PM10 Total	Fugitive PM2.5	Exhaust PM2.5	PM2.5 Total	Bio- CO2	NBio- CO2	Total CO2	CH4	N2O	CO2e
Category	lb/day										lb/day					
Archit. Coating	2.6313					0.0000	0.0000		0.0000	0.0000			0.0000			0.0000
Off-Road	0.2189	1.5268	1.8176	2.9700e-003		0.0941	0.0941		0.0941	0.0941		281.4481	281.4481	0.0193		281.9309
<b>Total</b>	<b>2.8502</b>	<b>1.5268</b>	<b>1.8176</b>	<b>2.9700e-003</b>		<b>0.0941</b>	<b>0.0941</b>		<b>0.0941</b>	<b>0.0941</b>		<b>281.4481</b>	<b>281.4481</b>	<b>0.0193</b>		<b>281.9309</b>

**Unmitigated Construction Off-Site**

	ROG	NOx	CO	SO2	Fugitive PM10	Exhaust PM10	PM10 Total	Fugitive PM2.5	Exhaust PM2.5	PM2.5 Total	Bio- CO2	NBio- CO2	Total CO2	CH4	N2O	CO2e
--	-----	-----	----	-----	---------------	--------------	------------	----------------	---------------	-------------	----------	-----------	-----------	-----	-----	------

Category	lb/day										lb/day					
Hauling	0.0000	0.0000	0.0000	0.0000	0.0000	0.0000	0.0000	0.0000	0.0000	0.0000	0.0000		0.0000	0.0000	0.0000	0.0000
Vendor	0.0000	0.0000	0.0000	0.0000	0.0000	0.0000	0.0000	0.0000	0.0000	0.0000	0.0000		0.0000	0.0000	0.0000	0.0000
Worker	8.0800e-003	5.0300e-003	0.0525	1.5000e-004	0.0164	1.1000e-004	0.0165	4.3600e-003	1.0000e-004	4.4600e-003		14.5366	14.5366	4.1000e-004		14.5470
<b>Total</b>	<b>8.0800e-003</b>	<b>5.0300e-003</b>	<b>0.0525</b>	<b>1.5000e-004</b>	<b>0.0164</b>	<b>1.1000e-004</b>	<b>0.0165</b>	<b>4.3600e-003</b>	<b>1.0000e-004</b>	<b>4.4600e-003</b>		<b>14.5366</b>	<b>14.5366</b>	<b>4.1000e-004</b>		<b>14.5470</b>

**Mitigated Construction On-Site**

	ROG	NOx	CO	SO2	Fugitive PM10	Exhaust PM10	PM10 Total	Fugitive PM2.5	Exhaust PM2.5	PM2.5 Total	Bio- CO2	NBio- CO2	Total CO2	CH4	N2O	CO2e
Category	lb/day										lb/day					
Archit. Coating	2.6313					0.0000	0.0000		0.0000	0.0000			0.0000			0.0000
Off-Road	0.2189	1.5268	1.8176	2.9700e-003		0.0941	0.0941		0.0941	0.0941	0.0000	281.4481	281.4481	0.0193		281.9309
<b>Total</b>	<b>2.8502</b>	<b>1.5268</b>	<b>1.8176</b>	<b>2.9700e-003</b>		<b>0.0941</b>	<b>0.0941</b>		<b>0.0941</b>	<b>0.0941</b>	<b>0.0000</b>	<b>281.4481</b>	<b>281.4481</b>	<b>0.0193</b>		<b>281.9309</b>

**Mitigated Construction Off-Site**

	ROG	NOx	CO	SO2	Fugitive PM10	Exhaust PM10	PM10 Total	Fugitive PM2.5	Exhaust PM2.5	PM2.5 Total	Bio- CO2	NBio- CO2	Total CO2	CH4	N2O	CO2e
Category	lb/day										lb/day					
Hauling	0.0000	0.0000	0.0000	0.0000	0.0000	0.0000	0.0000	0.0000	0.0000	0.0000		0.0000	0.0000	0.0000		0.0000
Vendor	0.0000	0.0000	0.0000	0.0000	0.0000	0.0000	0.0000	0.0000	0.0000	0.0000		0.0000	0.0000	0.0000		0.0000
Worker	8.0800e-003	5.0300e-003	0.0525	1.5000e-004	0.0156	1.1000e-004	0.0157	4.1500e-003	1.0000e-004	4.2500e-003		14.5366	14.5366	4.1000e-004		14.5470

Total	8.0800e-003	5.0300e-003	0.0525	1.5000e-004	0.0156	1.1000e-004	0.0157	4.1500e-003	1.0000e-004	4.2500e-003		14.5366	14.5366	4.1000e-004		14.5470
-------	-------------	-------------	--------	-------------	--------	-------------	--------	-------------	-------------	-------------	--	---------	---------	-------------	--	---------

#### 4.0 Operational Detail - Mobile

#### 4.1 Mitigation Measures Mobile

	ROG	NOx	CO	SO2	Fugitive PM10	Exhaust PM10	PM10 Total	Fugitive PM2.5	Exhaust PM2.5	PM2.5 Total	Bio- CO2	NBio- CO2	Total CO2	CH4	N2O	CO2e
Category	lb/day										lb/day					
Mitigated	5.1148	33.7645	36.8831	0.1182	7.1917	0.0891	7.2808	1.9245	0.0835	2.0080		12,121.7042	12,121.7042	1.1111		12,149.4811
Unmitigated	5.1148	33.7645	36.8831	0.1182	7.1917	0.0891	7.2808	1.9245	0.0835	2.0080		12,121.7042	12,121.7042	1.1111		12,149.4811

#### 4.2 Trip Summary Information

Land Use	Average Daily Trip Rate			Unmitigated Annual VMT	Mitigated Annual VMT
	Weekday	Saturday	Sunday		
Fast Food Restaurant with Drive Thru	2,480.60	3,610.15	2713.60	2,499,553	2,499,553
Parking Lot	0.00	0.00	0.00		
Total	2,480.60	3,610.15	2,713.60	2,499,553	2,499,553

#### 4.3 Trip Type Information

Land Use	Miles			Trip %			Trip Purpose %		
	H-W or C-W	H-S or C-C	H-O or C-NW	H-W or C-	H-S or C-C	H-O or C-NW	Primary	Diverted	Pass-by
Fast Food Restaurant with Drive	9.50	7.30	7.30	2.20	78.80	19.00	29	21	50
Parking Lot	9.50	7.30	7.30	0.00	0.00	0.00	0	0	0

#### 4.4 Fleet Mix

Land Use	LDA	LDT1	LDT2	MDV	LHD1	LHD2	MHD	HHD	OBUS	UBUS	MCY	SBUS	MH
Fast Food Restaurant with Drive Thru	0.549952	0.037123	0.179649	0.119457	0.017229	0.005267	0.017877	0.062669	0.001348	0.001607	0.006000	0.000812	0.001010
Parking Lot	0.549952	0.037123	0.179649	0.119457	0.017229	0.005267	0.017877	0.062669	0.001348	0.001607	0.006000	0.000812	0.001010

## 5.0 Energy Detail

Historical Energy Use: N

## 5.1 Mitigation Measures Energy

	ROG	NOx	CO	SO2	Fugitive PM10	Exhaust PM10	PM10 Total	Fugitive PM2.5	Exhaust PM2.5	PM2.5 Total	Bio- CO2	NBio- CO2	Total CO2	CH4	N2O	CO2e	
Category	lb/day										lb/day						
NaturalGas Mitigated	0.0404	0.3672	0.3085	2.2000e-003		0.0279	0.0279		0.0279	0.0279			440.6769	440.6769	8.4500e-003	8.0800e-003	443.2956
NaturalGas Unmitigated	0.0404	0.3672	0.3085	2.2000e-003		0.0279	0.0279		0.0279	0.0279			440.6769	440.6769	8.4500e-003	8.0800e-003	443.2956

## 5.2 Energy by Land Use - NaturalGas

### Unmitigated

	NaturalGas Use	ROG	NOx	CO	SO2	Fugitive PM10	Exhaust PM10	PM10 Total	Fugitive PM2.5	Exhaust PM2.5	PM2.5 Total	Bio- CO2	NBio- CO2	Total CO2	CH4	N2O	CO2e	
Land Use	kBTU/yr	lb/day										lb/day						
Fast Food Restaurant with Drive Thru	3745.75	0.0404	0.3672	0.3085	2.2000e-003		0.0279	0.0279		0.0279	0.0279			440.6769	440.6769	8.4500e-003	8.0800e-003	443.2956
Parking Lot	0	0.0000	0.0000	0.0000	0.0000		0.0000	0.0000		0.0000	0.0000			0.0000	0.0000	0.0000	0.0000	0.0000



Total		0.0404	0.3672	0.3085	2.2000e-003		0.0279	0.0279		0.0279	0.0279		440.6769	440.6769	8.4500e-003	8.0800e-003	443.2956
-------	--	--------	--------	--------	-------------	--	--------	--------	--	--------	--------	--	----------	----------	-------------	-------------	----------

**Mitigated**

	Natural Gas Use	ROG	NOx	CO	SO2	Fugitive PM10	Exhaust PM10	PM10 Total	Fugitive PM2.5	Exhaust PM2.5	PM2.5 Total	Bio- CO2	NBio- CO2	Total CO2	CH4	N2O	CO2e	
Land Use	kBTU/yr	lb/day										lb/day						
Fast Food Restaurant with Drive Thru	3.74575	0.0404	0.3672	0.3085	2.2000e-003		0.0279	0.0279		0.0279	0.0279			440.6769	440.6769	8.4500e-003	8.0800e-003	443.2956
Parking Lot	0	0.0000	0.0000	0.0000	0.0000		0.0000	0.0000		0.0000	0.0000			0.0000	0.0000	0.0000	0.0000	0.0000
Total		0.0404	0.3672	0.3085	2.2000e-003		0.0279	0.0279		0.0279	0.0279			440.6769	440.6769	8.4500e-003	8.0800e-003	443.2956

**6.0 Area Detail**

**6.1 Mitigation Measures Area**

	ROG	NOx	CO	SO2	Fugitive PM10	Exhaust PM10	PM10 Total	Fugitive PM2.5	Exhaust PM2.5	PM2.5 Total	Bio- CO2	NBio- CO2	Total CO2	CH4	N2O	CO2e	
Category	lb/day										lb/day						
Mitigated	0.1473	3.0000e-005	3.5900e-003	0.0000		1.0000e-005	1.0000e-005		1.0000e-005	1.0000e-005			7.6600e-003	7.6600e-003	2.0000e-005		8.1700e-003
Unmitigated	0.1473	3.0000e-005	3.5900e-003	0.0000		1.0000e-005	1.0000e-005		1.0000e-005	1.0000e-005			7.6600e-003	7.6600e-003	2.0000e-005		8.1700e-003

**6.2 Area by SubCategory**

**Unmitigated**

	ROG	NOx	CO	SO2	Fugitive PM10	Exhaust PM10	PM10 Total	Fugitive PM2.5	Exhaust PM2.5	PM2.5 Total	Bio- CO2	NBio- CO2	Total CO2	CH4	N2O	CO2e
SubCategory	lb/day										lb/day					
Architectural Coating	0.0346					0.0000	0.0000		0.0000	0.0000			0.0000			0.0000
Consumer Products	0.1123					0.0000	0.0000		0.0000	0.0000			0.0000			0.0000
Landscaping	3.4000e-004	3.0000e-005	3.5900e-003	0.0000		1.0000e-005	1.0000e-005		1.0000e-005	1.0000e-005		7.6600e-003	7.6600e-003	2.0000e-005		8.1700e-003
<b>Total</b>	<b>0.1473</b>	<b>3.0000e-005</b>	<b>3.5900e-003</b>	<b>0.0000</b>		<b>1.0000e-005</b>	<b>1.0000e-005</b>		<b>1.0000e-005</b>	<b>1.0000e-005</b>		<b>7.6600e-003</b>	<b>7.6600e-003</b>	<b>2.0000e-005</b>		<b>8.1700e-003</b>

**Mitigated**

	ROG	NOx	CO	SO2	Fugitive PM10	Exhaust PM10	PM10 Total	Fugitive PM2.5	Exhaust PM2.5	PM2.5 Total	Bio- CO2	NBio- CO2	Total CO2	CH4	N2O	CO2e
SubCategory	lb/day										lb/day					
Architectural Coating	0.0346					0.0000	0.0000		0.0000	0.0000			0.0000			0.0000
Consumer Products	0.1123					0.0000	0.0000		0.0000	0.0000			0.0000			0.0000
Landscaping	3.4000e-004	3.0000e-005	3.5900e-003	0.0000		1.0000e-005	1.0000e-005		1.0000e-005	1.0000e-005		7.6600e-003	7.6600e-003	2.0000e-005		8.1700e-003
<b>Total</b>	<b>0.1473</b>	<b>3.0000e-005</b>	<b>3.5900e-003</b>	<b>0.0000</b>		<b>1.0000e-005</b>	<b>1.0000e-005</b>		<b>1.0000e-005</b>	<b>1.0000e-005</b>		<b>7.6600e-003</b>	<b>7.6600e-003</b>	<b>2.0000e-005</b>		<b>8.1700e-003</b>

**7.0 Water Detail**

**7.1 Mitigation Measures Water**

Install Low Flow Bathroom Faucet

Install Low Flow Kitchen Faucet

- Install Low Flow Toilet
- Install Low Flow Shower
- Use Water Efficient Irrigation System

**8.0 Waste Detail**

---

**8.1 Mitigation Measures Waste**

Institute Recycling and Composting Services

**9.0 Operational Offroad**

---

Equipment Type	Number	Hours/Day	Days/Year	Horse Power	Load Factor	Fuel Type
----------------	--------	-----------	-----------	-------------	-------------	-----------

**10.0 Stationary Equipment**

---

**Fire Pumps and Emergency Generators**

Equipment Type	Number	Hours/Day	Hours/Year	Horse Power	Load Factor	Fuel Type
----------------	--------	-----------	------------	-------------	-------------	-----------

**Boilers**

Equipment Type	Number	Heat Input/Day	Heat Input/Year	Boiler Rating	Fuel Type
----------------	--------	----------------	-----------------	---------------	-----------

**User Defined Equipment**

Equipment Type	Number
----------------	--------

**11.0 Vegetation**

---

Yucca Valley Dominos - San Bernardino-Mojave Desert County, Annual

**Yucca Valley Dominos**  
**San Bernardino-Mojave Desert County, Annual**

**1.0 Project Characteristics**

**1.1 Land Usage**

Land Uses	Size	Metric	Lot Acreage	Floor Surface Area	Population
Fast Food Restaurant with Drive Thru	5.00	1000sqft	0.11	5,000.00	0
Parking Lot	30.00	Space	0.34	15,000.00	0

**1.2 Other Project Characteristics**

Urbanization	Urban	Wind Speed (m/s)	2.6	Precipitation Freq (Days)	32
Climate Zone	10			Operational Year	2021
Utility Company	Southern California Edison				
CO2 Intensity (lb/MWhr)	702.44	CH4 Intensity (lb/MWhr)	0.029	N2O Intensity (lb/MWhr)	0.006

**1.3 User Entered Comments & Non-Default Data**

- Project Characteristics -
- Land Use - Parking area adjusted to match other paved areas
- Construction Phase - Anticipated schedule
- Demolition -
- Construction Off-road Equipment Mitigation - MDAQMD Rule Compliance 403
- Water Mitigation -
- Waste Mitigation - per Ab 939

Table Name	Column Name	Default Value	New Value
------------	-------------	---------------	-----------

tblConstDustMitigation	CleanPavedRoadPercentReduction	0	6
tblConstDustMitigation	WaterUnpavedRoadMoistureContent	0	12
tblConstDustMitigation	WaterUnpavedRoadVehicleSpeed	0	15
tblConstructionPhase	NumDays	5.00	48.00
tblConstructionPhase	NumDays	100.00	94.00
tblConstructionPhase	PhaseEndDate	6/22/2021	6/7/2021
tblConstructionPhase	PhaseEndDate	6/8/2021	5/31/2021
tblConstructionPhase	PhaseEndDate	6/15/2021	6/7/2021
tblConstructionPhase	PhaseStartDate	6/16/2021	4/1/2021
tblConstructionPhase	PhaseStartDate	6/9/2021	6/1/2021
tblLandUse	LandUseSquareFeet	12,000.00	15,000.00
tblLandUse	LotAcreage	0.27	0.34

## 2.0 Emissions Summary

### 2.1 Overall Construction

#### Unmitigated Construction

	ROG	NOx	CO	SO2	Fugitive PM10	Exhaust PM10	PM10 Total	Fugitive PM2.5	Exhaust PM2.5	PM2.5 Total	Bio- CO2	NBio- CO2	Total CO2	CH4	N2O	CO2e
Year	tons/yr										MT/yr					
2021	0.1148	0.5008	0.4691	8.2000e-004	0.0156	0.0269	0.0424	3.3500e-003	0.0250	0.0283	0.0000	72.4205	72.4205	0.0181	0.0000	72.8737
Maximum	0.1148	0.5008	0.4691	8.2000e-004	0.0156	0.0269	0.0424	3.3500e-003	0.0250	0.0283	0.0000	72.4205	72.4205	0.0181	0.0000	72.8737

#### Mitigated Construction



	ROG	NOx	CO	SO2	Fugitive PM10	Exhaust PM10	PM10 Total	Fugitive PM2.5	Exhaust PM2.5	PM2.5 Total	Bio- CO2	NBio- CO2	Total CO2	CH4	N2O	CO2e
Year	tons/yr										MT/yr					
2021	0.1148	0.5008	0.4691	8.2000e-004	9.7500e-003	0.0269	0.0366	2.2700e-003	0.0250	0.0273	0.0000	72.4204	72.4204	0.0181	0.0000	72.8736
Maximum	0.1148	0.5008	0.4691	8.2000e-004	9.7500e-003	0.0269	0.0366	2.2700e-003	0.0250	0.0273	0.0000	72.4204	72.4204	0.0181	0.0000	72.8736

	ROG	NOx	CO	SO2	Fugitive PM10	Exhaust PM10	PM10 Total	Fugitive PM2.5	Exhaust PM2.5	PM2.5 Total	Bio- CO2	NBio- CO2	Total CO2	CH4	N2O	CO2e
Percent Reduction	0.00	0.00	0.00	0.00	37.46	0.00	13.76	32.24	0.00	3.81	0.00	0.00	0.00	0.00	0.00	0.00

Quarter	Start Date	End Date	Maximum Unmitigated ROG + NOX (tons/quarter)	Maximum Mitigated ROG + NOX (tons/quarter)
1	1-1-2021	3-31-2021	0.2956	0.2956
2	4-1-2021	6-30-2021	0.3245	0.3245
		Highest	0.3245	0.3245

## 2.2 Overall Operational

### Unmitigated Operational

	ROG	NOx	CO	SO2	Fugitive PM10	Exhaust PM10	PM10 Total	Fugitive PM2.5	Exhaust PM2.5	PM2.5 Total	Bio- CO2	NBio- CO2	Total CO2	CH4	N2O	CO2e
Category	tons/yr										MT/yr					
Area	0.0268	0.0000	3.2000e-004	0.0000		0.0000	0.0000		0.0000	0.0000	0.0000	6.3000e-004	6.3000e-004	0.0000	0.0000	6.7000e-004
Energy	7.3700e-003	0.0670	0.0563	4.0000e-004		5.0900e-003	5.0900e-003		5.0900e-003	5.0900e-003	0.0000	150.2725	150.2725	4.5900e-003	2.0000e-003	150.9826
Mobile	0.6634	4.6590	5.0389	0.0165	0.9518	0.0118	0.9637	0.2551	0.0111	0.2662	0.0000	1,531.5574	1,531.5574	0.1305	0.0000	1,534.8199
Waste						0.0000	0.0000		0.0000	0.0000	11.6903	0.0000	11.6903	0.6909	0.0000	28.9621
Water						0.0000	0.0000		0.0000	0.0000	0.4815	6.6394	7.1209	0.0497	1.2200e-003	8.7289

Total	0.6976	4.7260	5.0955	0.0169	0.9518	0.0169	0.9688	0.2551	0.0162	0.2713	12.1717	1,688.4699	1,700.6417	0.8757	3.2200e-003	1,723.4943
-------	--------	--------	--------	--------	--------	--------	--------	--------	--------	--------	---------	------------	------------	--------	-------------	------------

### Mitigated Operational

	ROG	NOx	CO	SO2	Fugitive PM10	Exhaust PM10	PM10 Total	Fugitive PM2.5	Exhaust PM2.5	PM2.5 Total	Bio- CO2	NBio- CO2	Total CO2	CH4	N2O	CO2e
Category	tons/yr										MT/yr					
Area	0.0268	0.0000	3.2000e-004	0.0000		0.0000	0.0000		0.0000	0.0000	0.0000	6.3000e-004	6.3000e-004	0.0000	0.0000	6.7000e-004
Energy	7.3700e-003	0.0670	0.0563	4.0000e-004		5.0900e-003	5.0900e-003		5.0900e-003	5.0900e-003	0.0000	150.2725	150.2725	4.5900e-003	2.0000e-003	150.9826
Mobile	0.6634	4.6590	5.0389	0.0165	0.9518	0.0118	0.9637	0.2551	0.0111	0.2662	0.0000	1,531.5574	1,531.5574	0.1305	0.0000	1,534.8199
Waste						0.0000	0.0000		0.0000	0.0000	5.8451	0.0000	5.8451	0.3454	0.0000	14.4811
Water						0.0000	0.0000		0.0000	0.0000	0.3852	5.3592	5.7444	0.0398	9.8000e-004	7.0310
Total	0.6976	4.7260	5.0955	0.0169	0.9518	0.0169	0.9688	0.2551	0.0162	0.2713	6.2303	1,687.1897	1,693.4200	0.5203	2.9800e-003	1,707.3153

	ROG	NOx	CO	SO2	Fugitive PM10	Exhaust PM10	PM10 Total	Fugitive PM2.5	Exhaust PM2.5	PM2.5 Total	Bio- CO2	NBio- CO2	Total CO2	CH4	N2O	CO2e
Percent Reduction	0.00	0.00	0.00	0.00	0.00	0.00	0.00	0.00	0.00	0.00	48.81	0.08	0.42	40.58	7.45	0.94

### 3.0 Construction Detail

#### Construction Phase

Phase Number	Phase Name	Phase Type	Start Date	End Date	Num Days Week	Num Days	Phase Description
1	Demolition	Demolition	1/1/2021	1/14/2021	5	10	
2	Site Preparation	Site Preparation	1/15/2021	1/15/2021	5	1	
3	Grading	Grading	1/16/2021	1/19/2021	5	2	
4	Building Construction	Building Construction	1/20/2021	5/31/2021	5	94	
5	Paving	Paving	6/1/2021	6/7/2021	5	5	

6	Architectural Coating	Architectural Coating	4/1/2021	6/7/2021	5	48
---	-----------------------	-----------------------	----------	----------	---	----

Acres of Grading (Site Preparation Phase): 0.5

Acres of Grading (Grading Phase): 0

Acres of Paving: 0.34

Residential Indoor: 0; Residential Outdoor: 0; Non-Residential Indoor: 7,500; Non-Residential Outdoor: 2,500; Striped Parking Area: 900

**OffRoad Equipment**

Phase Name	Offroad Equipment Type	Amount	Usage Hours	Horse Power	Load Factor
Architectural Coating	Air Compressors	1	6.00	78	0.48
Paving	Cement and Mortar Mixers	4	6.00	9	0.56
Demolition	Concrete/Industrial Saws	1	8.00	81	0.73
Grading	Concrete/Industrial Saws	1	8.00	81	0.73
Building Construction	Cranes	1	4.00	231	0.29
Building Construction	Forklifts	2	6.00	89	0.20
Site Preparation	Graders	1	8.00	187	0.41
Paving	Pavers	1	7.00	130	0.42
Paving	Rollers	1	7.00	80	0.38
Demolition	Rubber Tired Dozers	1	1.00	247	0.40
Grading	Rubber Tired Dozers	1	1.00	247	0.40
Building Construction	Tractors/Loaders/Backhoes	2	8.00	97	0.37
Demolition	Tractors/Loaders/Backhoes	2	6.00	97	0.37
Grading	Tractors/Loaders/Backhoes	2	6.00	97	0.37
Paving	Tractors/Loaders/Backhoes	1	7.00	97	0.37
Site Preparation	Tractors/Loaders/Backhoes	1	8.00	97	0.37

**Trips and VMT**

Phase Name	Offroad Equipment Count	Worker Trip Number	Vendor Trip Number	Hauling Trip Number	Worker Trip Length	Vendor Trip Length	Hauling Trip Length	Worker Vehicle Class	Vendor Vehicle Class	Hauling Vehicle Class
Demolition	4	10.00	0.00	79.00	10.80	7.30	20.00	LD_Mix	HDT_Mix	HHDT

Site Preparation	2	5.00	0.00	0.00	10.80	7.30	20.00	LD_Mix	HDT_Mix	HHDT
Grading	4	10.00	0.00	0.00	10.80	7.30	20.00	LD_Mix	HDT_Mix	HHDT
Building Construction	5	8.00	3.00	0.00	10.80	7.30	20.00	LD_Mix	HDT_Mix	HHDT
Paving	7	18.00	0.00	0.00	10.80	7.30	20.00	LD_Mix	HDT_Mix	HHDT
Architectural Coating	1	2.00	0.00	0.00	10.80	7.30	20.00	LD_Mix	HDT_Mix	HHDT

### 3.1 Mitigation Measures Construction

Replace Ground Cover

Water Exposed Area

Water Unpaved Roads

Reduce Vehicle Speed on Unpaved Roads

Clean Paved Roads

### 3.2 Demolition - 2021

#### Unmitigated Construction On-Site

	ROG	NOx	CO	SO2	Fugitive PM10	Exhaust PM10	PM10 Total	Fugitive PM2.5	Exhaust PM2.5	PM2.5 Total	Bio- CO2	NBio- CO2	Total CO2	CH4	N2O	CO2e
Category	tons/yr										MT/yr					
Fugitive Dust					8.6700e-003	0.0000	8.6700e-003	1.3100e-003	0.0000	1.3100e-003	0.0000	0.0000	0.0000	0.0000	0.0000	0.0000
Off-Road	3.9800e-003	0.0363	0.0379	6.0000e-005		2.0400e-003	2.0400e-003		1.9400e-003	1.9400e-003	0.0000	5.2047	5.2047	9.7000e-004	0.0000	5.2289
Total	3.9800e-003	0.0363	0.0379	6.0000e-005	8.6700e-003	2.0400e-003	0.0107	1.3100e-003	1.9400e-003	3.2500e-003	0.0000	5.2047	5.2047	9.7000e-004	0.0000	5.2289

#### Unmitigated Construction Off-Site

	ROG	NOx	CO	SO2	Fugitive PM10	Exhaust PM10	PM10 Total	Fugitive PM2.5	Exhaust PM2.5	PM2.5 Total	Bio- CO2	NBio- CO2	Total CO2	CH4	N2O	CO2e
--	-----	-----	----	-----	---------------	--------------	------------	----------------	---------------	-------------	----------	-----------	-----------	-----	-----	------

Category	tons/yr										MT/yr					
	Hauling	2.4000e-004	9.2200e-003	1.4800e-003	3.0000e-005	6.8000e-004	3.0000e-005	7.1000e-004	1.9000e-004	2.0000e-005	2.1000e-004	0.0000	2.9244	2.9244	1.6000e-004	0.0000
Vendor	0.0000	0.0000	0.0000	0.0000	0.0000	0.0000	0.0000	0.0000	0.0000	0.0000	0.0000	0.0000	0.0000	0.0000	0.0000	0.0000
Worker	1.8000e-004	1.3000e-004	1.3700e-003	0.0000	4.0000e-004	0.0000	4.1000e-004	1.1000e-004	0.0000	1.1000e-004	0.0000	0.3369	0.3369	1.0000e-005	0.0000	0.3371
Total	4.2000e-004	9.3500e-003	2.8500e-003	3.0000e-005	1.0800e-003	3.0000e-005	1.1200e-003	3.0000e-004	2.0000e-005	3.2000e-004	0.0000	3.2613	3.2613	1.7000e-004	0.0000	3.2656

### Mitigated Construction On-Site

Category	ROG	NOx	CO	SO2	Fugitive PM10	Exhaust PM10	PM10 Total	Fugitive PM2.5	Exhaust PM2.5	PM2.5 Total	Bio- CO2	NBio- CO2	Total CO2	CH4	N2O	CO2e
	tons/yr										MT/yr					
Fugitive Dust					3.7000e-003	0.0000	3.7000e-003	5.6000e-004	0.0000	5.6000e-004	0.0000	0.0000	0.0000	0.0000	0.0000	0.0000
Off-Road	3.9800e-003	0.0363	0.0379	6.0000e-005		2.0400e-003	2.0400e-003		1.9400e-003	1.9400e-003	0.0000	5.2047	5.2047	9.7000e-004	0.0000	5.2289
Total	3.9800e-003	0.0363	0.0379	6.0000e-005	3.7000e-003	2.0400e-003	5.7400e-003	5.6000e-004	1.9400e-003	2.5000e-003	0.0000	5.2047	5.2047	9.7000e-004	0.0000	5.2289

### Mitigated Construction Off-Site

Category	ROG	NOx	CO	SO2	Fugitive PM10	Exhaust PM10	PM10 Total	Fugitive PM2.5	Exhaust PM2.5	PM2.5 Total	Bio- CO2	NBio- CO2	Total CO2	CH4	N2O	CO2e
	tons/yr										MT/yr					
Hauling	2.4000e-004	9.2200e-003	1.4800e-003	3.0000e-005	6.5000e-004	3.0000e-005	6.7000e-004	1.8000e-004	2.0000e-005	2.0000e-004	0.0000	2.9244	2.9244	1.6000e-004	0.0000	2.9285
Vendor	0.0000	0.0000	0.0000	0.0000	0.0000	0.0000	0.0000	0.0000	0.0000	0.0000	0.0000	0.0000	0.0000	0.0000	0.0000	0.0000
Worker	1.8000e-004	1.3000e-004	1.3700e-003	0.0000	3.8000e-004	0.0000	3.8000e-004	1.0000e-004	0.0000	1.0000e-004	0.0000	0.3369	0.3369	1.0000e-005	0.0000	0.3371



Total	4.2000e-004	9.3500e-003	2.8500e-003	3.0000e-005	1.0300e-003	3.0000e-005	1.0500e-003	2.8000e-004	2.0000e-005	3.0000e-004	0.0000	3.2613	3.2613	1.7000e-004	0.0000	3.2656
-------	-------------	-------------	-------------	-------------	-------------	-------------	-------------	-------------	-------------	-------------	--------	--------	--------	-------------	--------	--------

### 3.3 Site Preparation - 2021

#### Unmitigated Construction On-Site

	ROG	NOx	CO	SO2	Fugitive PM10	Exhaust PM10	PM10 Total	Fugitive PM2.5	Exhaust PM2.5	PM2.5 Total	Bio- CO2	NBio- CO2	Total CO2	CH4	N2O	CO2e
Category	tons/yr										MT/yr					
Fugitive Dust					2.7000e-004	0.0000	2.7000e-004	3.0000e-005	0.0000	3.0000e-005	0.0000	0.0000	0.0000	0.0000	0.0000	0.0000
Off-Road	3.2000e-004	3.9100e-003	2.0100e-003	0.0000		1.5000e-004	1.5000e-004		1.4000e-004	1.4000e-004	0.0000	0.4276	0.4276	1.4000e-004	0.0000	0.4310
<b>Total</b>	<b>3.2000e-004</b>	<b>3.9100e-003</b>	<b>2.0100e-003</b>	<b>0.0000</b>	<b>2.7000e-004</b>	<b>1.5000e-004</b>	<b>4.2000e-004</b>	<b>3.0000e-005</b>	<b>1.4000e-004</b>	<b>1.7000e-004</b>	<b>0.0000</b>	<b>0.4276</b>	<b>0.4276</b>	<b>1.4000e-004</b>	<b>0.0000</b>	<b>0.4310</b>

#### Unmitigated Construction Off-Site

	ROG	NOx	CO	SO2	Fugitive PM10	Exhaust PM10	PM10 Total	Fugitive PM2.5	Exhaust PM2.5	PM2.5 Total	Bio- CO2	NBio- CO2	Total CO2	CH4	N2O	CO2e
Category	tons/yr										MT/yr					
Hauling	0.0000	0.0000	0.0000	0.0000	0.0000	0.0000	0.0000	0.0000	0.0000	0.0000	0.0000	0.0000	0.0000	0.0000	0.0000	0.0000
Vendor	0.0000	0.0000	0.0000	0.0000	0.0000	0.0000	0.0000	0.0000	0.0000	0.0000	0.0000	0.0000	0.0000	0.0000	0.0000	0.0000
Worker	1.0000e-005	1.0000e-005	7.0000e-005	0.0000	2.0000e-005	0.0000	2.0000e-005	1.0000e-005	0.0000	1.0000e-005	0.0000	0.0168	0.0168	0.0000	0.0000	0.0169
<b>Total</b>	<b>1.0000e-005</b>	<b>1.0000e-005</b>	<b>7.0000e-005</b>	<b>0.0000</b>	<b>2.0000e-005</b>	<b>0.0000</b>	<b>2.0000e-005</b>	<b>1.0000e-005</b>	<b>0.0000</b>	<b>1.0000e-005</b>	<b>0.0000</b>	<b>0.0168</b>	<b>0.0168</b>	<b>0.0000</b>	<b>0.0000</b>	<b>0.0169</b>

#### Mitigated Construction On-Site

	ROG	NOx	CO	SO2	Fugitive PM10	Exhaust PM10	PM10 Total	Fugitive PM2.5	Exhaust PM2.5	PM2.5 Total	Bio- CO2	NBio- CO2	Total CO2	CH4	N2O	CO2e
Category	tons/yr										MT/yr					
Fugitive Dust					1.1000e-004	0.0000	1.1000e-004	1.0000e-005	0.0000	1.0000e-005	0.0000	0.0000	0.0000	0.0000	0.0000	0.0000
Off-Road	3.2000e-004	3.9100e-003	2.0100e-003	0.0000		1.5000e-004	1.5000e-004		1.4000e-004	1.4000e-004	0.0000	0.4276	0.4276	1.4000e-004	0.0000	0.4310
<b>Total</b>	<b>3.2000e-004</b>	<b>3.9100e-003</b>	<b>2.0100e-003</b>	<b>0.0000</b>	<b>1.1000e-004</b>	<b>1.5000e-004</b>	<b>2.6000e-004</b>	<b>1.0000e-005</b>	<b>1.4000e-004</b>	<b>1.5000e-004</b>	<b>0.0000</b>	<b>0.4276</b>	<b>0.4276</b>	<b>1.4000e-004</b>	<b>0.0000</b>	<b>0.4310</b>

**Mitigated Construction Off-Site**

	ROG	NOx	CO	SO2	Fugitive PM10	Exhaust PM10	PM10 Total	Fugitive PM2.5	Exhaust PM2.5	PM2.5 Total	Bio- CO2	NBio- CO2	Total CO2	CH4	N2O	CO2e
Category	tons/yr										MT/yr					
Hauling	0.0000	0.0000	0.0000	0.0000	0.0000	0.0000	0.0000	0.0000	0.0000	0.0000	0.0000	0.0000	0.0000	0.0000	0.0000	0.0000
Vendor	0.0000	0.0000	0.0000	0.0000	0.0000	0.0000	0.0000	0.0000	0.0000	0.0000	0.0000	0.0000	0.0000	0.0000	0.0000	0.0000
Worker	1.0000e-005	1.0000e-005	7.0000e-005	0.0000	2.0000e-005	0.0000	2.0000e-005	1.0000e-005	0.0000	1.0000e-005	0.0000	0.0168	0.0168	0.0000	0.0000	0.0169
<b>Total</b>	<b>1.0000e-005</b>	<b>1.0000e-005</b>	<b>7.0000e-005</b>	<b>0.0000</b>	<b>2.0000e-005</b>	<b>0.0000</b>	<b>2.0000e-005</b>	<b>1.0000e-005</b>	<b>0.0000</b>	<b>1.0000e-005</b>	<b>0.0000</b>	<b>0.0168</b>	<b>0.0168</b>	<b>0.0000</b>	<b>0.0000</b>	<b>0.0169</b>

**3.4 Grading - 2021**

**Unmitigated Construction On-Site**

	ROG	NOx	CO	SO2	Fugitive PM10	Exhaust PM10	PM10 Total	Fugitive PM2.5	Exhaust PM2.5	PM2.5 Total	Bio- CO2	NBio- CO2	Total CO2	CH4	N2O	CO2e
Category	tons/yr										MT/yr					

Fugitive Dust					7.5000e-004	0.0000	7.5000e-004	4.1000e-004	0.0000	4.1000e-004	0.0000	0.0000	0.0000	0.0000	0.0000	0.0000
Off-Road	8.0000e-004	7.2500e-003	7.5700e-003	1.0000e-005		4.1000e-004	4.1000e-004		3.9000e-004	3.9000e-004	0.0000	1.0409	1.0409	1.9000e-004	0.0000	1.0458
<b>Total</b>	<b>8.0000e-004</b>	<b>7.2500e-003</b>	<b>7.5700e-003</b>	<b>1.0000e-005</b>	<b>7.5000e-004</b>	<b>4.1000e-004</b>	<b>1.1600e-003</b>	<b>4.1000e-004</b>	<b>3.9000e-004</b>	<b>8.0000e-004</b>	<b>0.0000</b>	<b>1.0409</b>	<b>1.0409</b>	<b>1.9000e-004</b>	<b>0.0000</b>	<b>1.0458</b>

**Unmitigated Construction Off-Site**

	ROG	NOx	CO	SO2	Fugitive PM10	Exhaust PM10	PM10 Total	Fugitive PM2.5	Exhaust PM2.5	PM2.5 Total	Bio- CO2	NBio- CO2	Total CO2	CH4	N2O	CO2e
Category	tons/yr										MT/yr					
Hauling	0.0000	0.0000	0.0000	0.0000	0.0000	0.0000	0.0000	0.0000	0.0000	0.0000	0.0000	0.0000	0.0000	0.0000	0.0000	0.0000
Vendor	0.0000	0.0000	0.0000	0.0000	0.0000	0.0000	0.0000	0.0000	0.0000	0.0000	0.0000	0.0000	0.0000	0.0000	0.0000	0.0000
Worker	4.0000e-005	3.0000e-005	2.7000e-004	0.0000	8.0000e-005	0.0000	8.0000e-005	2.0000e-005	0.0000	2.0000e-005	0.0000	0.0674	0.0674	0.0000	0.0000	0.0674
<b>Total</b>	<b>4.0000e-005</b>	<b>3.0000e-005</b>	<b>2.7000e-004</b>	<b>0.0000</b>	<b>8.0000e-005</b>	<b>0.0000</b>	<b>8.0000e-005</b>	<b>2.0000e-005</b>	<b>0.0000</b>	<b>2.0000e-005</b>	<b>0.0000</b>	<b>0.0674</b>	<b>0.0674</b>	<b>0.0000</b>	<b>0.0000</b>	<b>0.0674</b>

**Mitigated Construction On-Site**

	ROG	NOx	CO	SO2	Fugitive PM10	Exhaust PM10	PM10 Total	Fugitive PM2.5	Exhaust PM2.5	PM2.5 Total	Bio- CO2	NBio- CO2	Total CO2	CH4	N2O	CO2e
Category	tons/yr										MT/yr					
Fugitive Dust					3.2000e-004	0.0000	3.2000e-004	1.8000e-004	0.0000	1.8000e-004	0.0000	0.0000	0.0000	0.0000	0.0000	0.0000
Off-Road	8.0000e-004	7.2500e-003	7.5700e-003	1.0000e-005		4.1000e-004	4.1000e-004		3.9000e-004	3.9000e-004	0.0000	1.0409	1.0409	1.9000e-004	0.0000	1.0458
<b>Total</b>	<b>8.0000e-004</b>	<b>7.2500e-003</b>	<b>7.5700e-003</b>	<b>1.0000e-005</b>	<b>3.2000e-004</b>	<b>4.1000e-004</b>	<b>7.3000e-004</b>	<b>1.8000e-004</b>	<b>3.9000e-004</b>	<b>5.7000e-004</b>	<b>0.0000</b>	<b>1.0409</b>	<b>1.0409</b>	<b>1.9000e-004</b>	<b>0.0000</b>	<b>1.0458</b>

**Mitigated Construction Off-Site**

	ROG	NOx	CO	SO2	Fugitive PM10	Exhaust PM10	PM10 Total	Fugitive PM2.5	Exhaust PM2.5	PM2.5 Total	Bio- CO2	NBio- CO2	Total CO2	CH4	N2O	CO2e
Category	tons/yr										MT/yr					
Hauling	0.0000	0.0000	0.0000	0.0000	0.0000	0.0000	0.0000	0.0000	0.0000	0.0000	0.0000	0.0000	0.0000	0.0000	0.0000	0.0000
Vendor	0.0000	0.0000	0.0000	0.0000	0.0000	0.0000	0.0000	0.0000	0.0000	0.0000	0.0000	0.0000	0.0000	0.0000	0.0000	0.0000
Worker	4.0000e-005	3.0000e-005	2.7000e-004	0.0000	8.0000e-005	0.0000	8.0000e-005	2.0000e-005	0.0000	2.0000e-005	0.0000	0.0674	0.0674	0.0000	0.0000	0.0674
<b>Total</b>	<b>4.0000e-005</b>	<b>3.0000e-005</b>	<b>2.7000e-004</b>	<b>0.0000</b>	<b>8.0000e-005</b>	<b>0.0000</b>	<b>8.0000e-005</b>	<b>2.0000e-005</b>	<b>0.0000</b>	<b>2.0000e-005</b>	<b>0.0000</b>	<b>0.0674</b>	<b>0.0674</b>	<b>0.0000</b>	<b>0.0000</b>	<b>0.0674</b>

**3.5 Building Construction - 2021**

**Unmitigated Construction On-Site**

	ROG	NOx	CO	SO2	Fugitive PM10	Exhaust PM10	PM10 Total	Fugitive PM2.5	Exhaust PM2.5	PM2.5 Total	Bio- CO2	NBio- CO2	Total CO2	CH4	N2O	CO2e
Category	tons/yr										MT/yr					
Off-Road	0.0364	0.3753	0.3414	5.4000e-004		0.0210	0.0210		0.0194	0.0194	0.0000	47.0386	47.0386	0.0152	0.0000	47.4189
<b>Total</b>	<b>0.0364</b>	<b>0.3753</b>	<b>0.3414</b>	<b>5.4000e-004</b>		<b>0.0210</b>	<b>0.0210</b>		<b>0.0194</b>	<b>0.0194</b>	<b>0.0000</b>	<b>47.0386</b>	<b>47.0386</b>	<b>0.0152</b>	<b>0.0000</b>	<b>47.4189</b>

**Unmitigated Construction Off-Site**

	ROG	NOx	CO	SO2	Fugitive PM10	Exhaust PM10	PM10 Total	Fugitive PM2.5	Exhaust PM2.5	PM2.5 Total	Bio- CO2	NBio- CO2	Total CO2	CH4	N2O	CO2e
--	-----	-----	----	-----	---------------	--------------	------------	----------------	---------------	-------------	----------	-----------	-----------	-----	-----	------

Category	tons/yr										MT/yr					
Hauling	0.0000	0.0000	0.0000	0.0000	0.0000	0.0000	0.0000	0.0000	0.0000	0.0000	0.0000	0.0000	0.0000	0.0000	0.0000	0.0000
Vendor	3.8000e-004	0.0140	2.8500e-003	4.0000e-005	9.4000e-004	2.0000e-005	9.7000e-004	2.7000e-004	2.0000e-005	3.0000e-004	0.0000	3.7275	3.7275	2.4000e-004	0.0000	3.7336
Worker	1.3800e-003	1.0000e-003	0.0103	3.0000e-005	3.0300e-003	2.0000e-005	3.0500e-003	8.0000e-004	2.0000e-005	8.2000e-004	0.0000	2.5332	2.5332	7.0000e-005	0.0000	2.5350
Total	1.7600e-003	0.0150	0.0132	7.0000e-005	3.9700e-003	4.0000e-005	4.0200e-003	1.0700e-003	4.0000e-005	1.1200e-003	0.0000	6.2607	6.2607	3.1000e-004	0.0000	6.2686

**Mitigated Construction On-Site**

Category	ROG	NOx	CO	SO2	Fugitive PM10	Exhaust PM10	PM10 Total	Fugitive PM2.5	Exhaust PM2.5	PM2.5 Total	Bio- CO2	NBio- CO2	Total CO2	CH4	N2O	CO2e
	tons/yr										MT/yr					
Off-Road	0.0364	0.3753	0.3414	5.4000e-004		0.0210	0.0210		0.0194	0.0194	0.0000	47.0385	47.0385	0.0152	0.0000	47.4188
Total	0.0364	0.3753	0.3414	5.4000e-004		0.0210	0.0210		0.0194	0.0194	0.0000	47.0385	47.0385	0.0152	0.0000	47.4188

**Mitigated Construction Off-Site**

Category	ROG	NOx	CO	SO2	Fugitive PM10	Exhaust PM10	PM10 Total	Fugitive PM2.5	Exhaust PM2.5	PM2.5 Total	Bio- CO2	NBio- CO2	Total CO2	CH4	N2O	CO2e
	tons/yr										MT/yr					
Hauling	0.0000	0.0000	0.0000	0.0000	0.0000	0.0000	0.0000	0.0000	0.0000	0.0000	0.0000	0.0000	0.0000	0.0000	0.0000	0.0000
Vendor	3.8000e-004	0.0140	2.8500e-003	4.0000e-005	9.0000e-004	2.0000e-005	9.3000e-004	2.6000e-004	2.0000e-005	2.9000e-004	0.0000	3.7275	3.7275	2.4000e-004	0.0000	3.7336
Worker	1.3800e-003	1.0000e-003	0.0103	3.0000e-005	2.8700e-003	2.0000e-005	2.8900e-003	7.7000e-004	2.0000e-005	7.8000e-004	0.0000	2.5332	2.5332	7.0000e-005	0.0000	2.5350



Total	1.7600e-003	0.0150	0.0132	7.0000e-005	3.7700e-003	4.0000e-005	3.8200e-003	1.0300e-003	4.0000e-005	1.0700e-003	0.0000	6.2607	6.2607	3.1000e-004	0.0000	6.2686
-------	-------------	--------	--------	-------------	-------------	-------------	-------------	-------------	-------------	-------------	--------	--------	--------	-------------	--------	--------

### 3.6 Paving - 2021

#### Unmitigated Construction On-Site

	ROG	NOx	CO	SO2	Fugitive PM10	Exhaust PM10	PM10 Total	Fugitive PM2.5	Exhaust PM2.5	PM2.5 Total	Bio- CO2	NBio- CO2	Total CO2	CH4	N2O	CO2e
Category	tons/yr										MT/yr					
Off-Road	1.8000e-003	0.0168	0.0177	3.0000e-005		8.8000e-004	8.8000e-004		8.2000e-004	8.2000e-004	0.0000	2.3481	2.3481	6.8000e-004	0.0000	2.3652
Paving	4.5000e-004					0.0000	0.0000		0.0000	0.0000	0.0000	0.0000	0.0000	0.0000	0.0000	0.0000
<b>Total</b>	<b>2.2500e-003</b>	<b>0.0168</b>	<b>0.0177</b>	<b>3.0000e-005</b>		<b>8.8000e-004</b>	<b>8.8000e-004</b>		<b>8.2000e-004</b>	<b>8.2000e-004</b>	<b>0.0000</b>	<b>2.3481</b>	<b>2.3481</b>	<b>6.8000e-004</b>	<b>0.0000</b>	<b>2.3652</b>

#### Unmitigated Construction Off-Site

	ROG	NOx	CO	SO2	Fugitive PM10	Exhaust PM10	PM10 Total	Fugitive PM2.5	Exhaust PM2.5	PM2.5 Total	Bio- CO2	NBio- CO2	Total CO2	CH4	N2O	CO2e
Category	tons/yr										MT/yr					
Hauling	0.0000	0.0000	0.0000	0.0000	0.0000	0.0000	0.0000	0.0000	0.0000	0.0000	0.0000	0.0000	0.0000	0.0000	0.0000	0.0000
Vendor	0.0000	0.0000	0.0000	0.0000	0.0000	0.0000	0.0000	0.0000	0.0000	0.0000	0.0000	0.0000	0.0000	0.0000	0.0000	0.0000
Worker	1.7000e-004	1.2000e-004	1.2400e-003	0.0000	3.6000e-004	0.0000	3.7000e-004	1.0000e-004	0.0000	1.0000e-004	0.0000	0.3032	0.3032	1.0000e-005	0.0000	0.3034
<b>Total</b>	<b>1.7000e-004</b>	<b>1.2000e-004</b>	<b>1.2400e-003</b>	<b>0.0000</b>	<b>3.6000e-004</b>	<b>0.0000</b>	<b>3.7000e-004</b>	<b>1.0000e-004</b>	<b>0.0000</b>	<b>1.0000e-004</b>	<b>0.0000</b>	<b>0.3032</b>	<b>0.3032</b>	<b>1.0000e-005</b>	<b>0.0000</b>	<b>0.3034</b>

#### Mitigated Construction On-Site

	ROG	NOx	CO	SO2	Fugitive PM10	Exhaust PM10	PM10 Total	Fugitive PM2.5	Exhaust PM2.5	PM2.5 Total	Bio- CO2	NBio- CO2	Total CO2	CH4	N2O	CO2e
Category	tons/yr										MT/yr					
Off-Road	1.8000e-003	0.0168	0.0177	3.0000e-005		8.8000e-004	8.8000e-004		8.2000e-004	8.2000e-004	0.0000	2.3481	2.3481	6.8000e-004	0.0000	2.3652
Paving	4.5000e-004					0.0000	0.0000		0.0000	0.0000	0.0000	0.0000	0.0000	0.0000	0.0000	0.0000
Total	2.2500e-003	0.0168	0.0177	3.0000e-005		8.8000e-004	8.8000e-004		8.2000e-004	8.2000e-004	0.0000	2.3481	2.3481	6.8000e-004	0.0000	2.3652

**Mitigated Construction Off-Site**

	ROG	NOx	CO	SO2	Fugitive PM10	Exhaust PM10	PM10 Total	Fugitive PM2.5	Exhaust PM2.5	PM2.5 Total	Bio- CO2	NBio- CO2	Total CO2	CH4	N2O	CO2e
Category	tons/yr										MT/yr					
Hauling	0.0000	0.0000	0.0000	0.0000	0.0000	0.0000	0.0000	0.0000	0.0000	0.0000	0.0000	0.0000	0.0000	0.0000	0.0000	0.0000
Vendor	0.0000	0.0000	0.0000	0.0000	0.0000	0.0000	0.0000	0.0000	0.0000	0.0000	0.0000	0.0000	0.0000	0.0000	0.0000	0.0000
Worker	1.7000e-004	1.2000e-004	1.2400e-003	0.0000	3.4000e-004	0.0000	3.5000e-004	9.0000e-005	0.0000	9.0000e-005	0.0000	0.3032	0.3032	1.0000e-005	0.0000	0.3034
Total	1.7000e-004	1.2000e-004	1.2400e-003	0.0000	3.4000e-004	0.0000	3.5000e-004	9.0000e-005	0.0000	9.0000e-005	0.0000	0.3032	0.3032	1.0000e-005	0.0000	0.3034

**3.7 Architectural Coating - 2021**

**Unmitigated Construction On-Site**

	ROG	NOx	CO	SO2	Fugitive PM10	Exhaust PM10	PM10 Total	Fugitive PM2.5	Exhaust PM2.5	PM2.5 Total	Bio- CO2	NBio- CO2	Total CO2	CH4	N2O	CO2e
Category	tons/yr										MT/yr					

Archit. Coating	0.0632					0.0000	0.0000		0.0000	0.0000	0.0000	0.0000	0.0000	0.0000	0.0000	0.0000
Off-Road	5.2500e-003	0.0366	0.0436	7.0000e-005		2.2600e-003	2.2600e-003		2.2600e-003	2.2600e-003	0.0000	6.1278	6.1278	4.2000e-004	0.0000	6.1383
<b>Total</b>	<b>0.0684</b>	<b>0.0366</b>	<b>0.0436</b>	<b>7.0000e-005</b>		<b>2.2600e-003</b>	<b>2.2600e-003</b>		<b>2.2600e-003</b>	<b>2.2600e-003</b>	<b>0.0000</b>	<b>6.1278</b>	<b>6.1278</b>	<b>4.2000e-004</b>	<b>0.0000</b>	<b>6.1383</b>

**Unmitigated Construction Off-Site**

	ROG	NOx	CO	SO2	Fugitive PM10	Exhaust PM10	PM10 Total	Fugitive PM2.5	Exhaust PM2.5	PM2.5 Total	Bio- CO2	NBio- CO2	Total CO2	CH4	N2O	CO2e
Category	tons/yr										MT/yr					
Hauling	0.0000	0.0000	0.0000	0.0000	0.0000	0.0000	0.0000	0.0000	0.0000	0.0000	0.0000	0.0000	0.0000	0.0000	0.0000	0.0000
Vendor	0.0000	0.0000	0.0000	0.0000	0.0000	0.0000	0.0000	0.0000	0.0000	0.0000	0.0000	0.0000	0.0000	0.0000	0.0000	0.0000
Worker	1.8000e-004	1.3000e-004	1.3200e-003	0.0000	3.9000e-004	0.0000	3.9000e-004	1.0000e-004	0.0000	1.1000e-004	0.0000	0.3234	0.3234	1.0000e-005	0.0000	0.3236
<b>Total</b>	<b>1.8000e-004</b>	<b>1.3000e-004</b>	<b>1.3200e-003</b>	<b>0.0000</b>	<b>3.9000e-004</b>	<b>0.0000</b>	<b>3.9000e-004</b>	<b>1.0000e-004</b>	<b>0.0000</b>	<b>1.1000e-004</b>	<b>0.0000</b>	<b>0.3234</b>	<b>0.3234</b>	<b>1.0000e-005</b>	<b>0.0000</b>	<b>0.3236</b>

**Mitigated Construction On-Site**

	ROG	NOx	CO	SO2	Fugitive PM10	Exhaust PM10	PM10 Total	Fugitive PM2.5	Exhaust PM2.5	PM2.5 Total	Bio- CO2	NBio- CO2	Total CO2	CH4	N2O	CO2e
Category	tons/yr										MT/yr					
Archit. Coating	0.0632						0.0000	0.0000		0.0000	0.0000	0.0000	0.0000	0.0000	0.0000	0.0000
Off-Road	5.2500e-003	0.0366	0.0436	7.0000e-005		2.2600e-003	2.2600e-003		2.2600e-003	2.2600e-003	0.0000	6.1278	6.1278	4.2000e-004	0.0000	6.1383
<b>Total</b>	<b>0.0684</b>	<b>0.0366</b>	<b>0.0436</b>	<b>7.0000e-005</b>		<b>2.2600e-003</b>	<b>2.2600e-003</b>		<b>2.2600e-003</b>	<b>2.2600e-003</b>	<b>0.0000</b>	<b>6.1278</b>	<b>6.1278</b>	<b>4.2000e-004</b>	<b>0.0000</b>	<b>6.1383</b>

**Mitigated Construction Off-Site**

	ROG	NOx	CO	SO2	Fugitive PM10	Exhaust PM10	PM10 Total	Fugitive PM2.5	Exhaust PM2.5	PM2.5 Total	Bio- CO2	NBio- CO2	Total CO2	CH4	N2O	CO2e
Category	tons/yr										MT/yr					
Hauling	0.0000	0.0000	0.0000	0.0000	0.0000	0.0000	0.0000	0.0000	0.0000	0.0000	0.0000	0.0000	0.0000	0.0000	0.0000	0.0000
Vendor	0.0000	0.0000	0.0000	0.0000	0.0000	0.0000	0.0000	0.0000	0.0000	0.0000	0.0000	0.0000	0.0000	0.0000	0.0000	0.0000
Worker	1.8000e-004	1.3000e-004	1.3200e-003	0.0000	3.7000e-004	0.0000	3.7000e-004	1.0000e-004	0.0000	1.0000e-004	0.0000	0.3234	0.3234	1.0000e-005	0.0000	0.3236
<b>Total</b>	<b>1.8000e-004</b>	<b>1.3000e-004</b>	<b>1.3200e-003</b>	<b>0.0000</b>	<b>3.7000e-004</b>	<b>0.0000</b>	<b>3.7000e-004</b>	<b>1.0000e-004</b>	<b>0.0000</b>	<b>1.0000e-004</b>	<b>0.0000</b>	<b>0.3234</b>	<b>0.3234</b>	<b>1.0000e-005</b>	<b>0.0000</b>	<b>0.3236</b>

**4.0 Operational Detail - Mobile**

**4.1 Mitigation Measures Mobile**

	ROG	NOx	CO	SO2	Fugitive PM10	Exhaust PM10	PM10 Total	Fugitive PM2.5	Exhaust PM2.5	PM2.5 Total	Bio- CO2	NBio- CO2	Total CO2	CH4	N2O	CO2e
Category	tons/yr										MT/yr					
Mitigated	0.6634	4.6590	5.0389	0.0165	0.9518	0.0118	0.9637	0.2551	0.0111	0.2662	0.0000	1,531.5574	1,531.5574	0.1305	0.0000	1,534.8199
Unmitigated	0.6634	4.6590	5.0389	0.0165	0.9518	0.0118	0.9637	0.2551	0.0111	0.2662	0.0000	1,531.5574	1,531.5574	0.1305	0.0000	1,534.8199

**4.2 Trip Summary Information**

Land Use	Average Daily Trip Rate			Unmitigated	Mitigated
	Weekday	Saturday	Sunday	Annual VMT	Annual VMT
Fast Food Restaurant with Drive Thru	2,480.60	3,610.15	2713.60	2,499,553	2,499,553
Parking Lot	0.00	0.00	0.00		
Total	2,480.60	3,610.15	2,713.60	2,499,553	2,499,553

### 4.3 Trip Type Information

Land Use	Miles			Trip %			Trip Purpose %		
	H-W or C-W	H-S or C-C	H-O or C-NW	H-W or C-	H-S or C-C	H-O or C-NW	Primary	Diverted	Pass-by
Fast Food Restaurant with Drive Thru	9.50	7.30	7.30	2.20	78.80	19.00	29	21	50
Parking Lot	9.50	7.30	7.30	0.00	0.00	0.00	0	0	0

### 4.4 Fleet Mix

Land Use	LDA	LDT1	LDT2	MDV	LHD1	LHD2	MHD	HHD	OBUS	UBUS	MCY	SBUS	MH
Fast Food Restaurant with Drive Thru	0.549952	0.037123	0.179649	0.119457	0.017229	0.005267	0.017877	0.062669	0.001348	0.001607	0.006000	0.000812	0.001010
Parking Lot	0.549952	0.037123	0.179649	0.119457	0.017229	0.005267	0.017877	0.062669	0.001348	0.001607	0.006000	0.000812	0.001010

### 5.0 Energy Detail

Historical Energy Use: N

### 5.1 Mitigation Measures Energy

Category	ROG	NOx	CO	SO2	Fugitive PM10	Exhaust PM10	PM10 Total	Fugitive PM2.5	Exhaust PM2.5	PM2.5 Total	Bio- CO2	NBio- CO2	Total CO2	CH4	N2O	CO2e
	tons/yr										MT/yr					
Electricity Mitigated						0.0000	0.0000		0.0000	0.0000	0.0000	77.3135	77.3135	3.1900e-003	6.6000e-004	77.5901
Electricity Unmitigated						0.0000	0.0000		0.0000	0.0000	0.0000	77.3135	77.3135	3.1900e-003	6.6000e-004	77.5901
Natural Gas Mitigated	7.3700e-003	0.0670	0.0563	4.0000e-004		5.0900e-003	5.0900e-003		5.0900e-003	5.0900e-003	0.0000	72.9590	72.9590	1.4000e-003	1.3400e-003	73.3926



NaturalGas Unmitigated	7.3700e-003	0.0670	0.0563	4.0000e-004		5.0900e-003	5.0900e-003		5.0900e-003	5.0900e-003	0.0000	72.9590	72.9590	1.4000e-003	1.3400e-003	73.3926
------------------------	-------------	--------	--------	-------------	--	-------------	-------------	--	-------------	-------------	--------	---------	---------	-------------	-------------	---------

## 5.2 Energy by Land Use - NaturalGas

### Unmitigated

	NaturalGas Use	ROG	NOx	CO	SO2	Fugitive PM10	Exhaust PM10	PM10 Total	Fugitive PM2.5	Exhaust PM2.5	PM2.5 Total	Bio- CO2	NBio- CO2	Total CO2	CH4	N2O	CO2e
Land Use	kBTU/yr	tons/yr										MT/yr					
Fast Food Restaurant with Drive Thru Parking Lot	1.3672e+06	7.3700e-003	0.0670	0.0563	4.0000e-004		5.0900e-003	5.0900e-003		5.0900e-003	5.0900e-003	0.0000	72.9590	72.9590	1.4000e-003	1.3400e-003	73.3926
Parking Lot	0	0.0000	0.0000	0.0000	0.0000		0.0000	0.0000		0.0000	0.0000	0.0000	0.0000	0.0000	0.0000	0.0000	0.0000
<b>Total</b>		<b>7.3700e-003</b>	<b>0.0670</b>	<b>0.0563</b>	<b>4.0000e-004</b>		<b>5.0900e-003</b>	<b>5.0900e-003</b>		<b>5.0900e-003</b>	<b>5.0900e-003</b>	<b>0.0000</b>	<b>72.9590</b>	<b>72.9590</b>	<b>1.4000e-003</b>	<b>1.3400e-003</b>	<b>73.3926</b>

### Mitigated

	NaturalGas Use	ROG	NOx	CO	SO2	Fugitive PM10	Exhaust PM10	PM10 Total	Fugitive PM2.5	Exhaust PM2.5	PM2.5 Total	Bio- CO2	NBio- CO2	Total CO2	CH4	N2O	CO2e
Land Use	kBTU/yr	tons/yr										MT/yr					
Fast Food Restaurant with Drive Thru Parking Lot	1.3672e+06	7.3700e-003	0.0670	0.0563	4.0000e-004		5.0900e-003	5.0900e-003		5.0900e-003	5.0900e-003	0.0000	72.9590	72.9590	1.4000e-003	1.3400e-003	73.3926
Parking Lot	0	0.0000	0.0000	0.0000	0.0000		0.0000	0.0000		0.0000	0.0000	0.0000	0.0000	0.0000	0.0000	0.0000	0.0000
<b>Total</b>		<b>7.3700e-003</b>	<b>0.0670</b>	<b>0.0563</b>	<b>4.0000e-004</b>		<b>5.0900e-003</b>	<b>5.0900e-003</b>		<b>5.0900e-003</b>	<b>5.0900e-003</b>	<b>0.0000</b>	<b>72.9590</b>	<b>72.9590</b>	<b>1.4000e-003</b>	<b>1.3400e-003</b>	<b>73.3926</b>

## 5.3 Energy by Land Use - Electricity

### Unmitigated



Mitigated	0.0268	0.0000	3.2000e-004	0.0000		0.0000	0.0000		0.0000	0.0000	0.0000	6.3000e-004	6.3000e-004	0.0000	0.0000	6.7000e-004
Unmitigated	0.0268	0.0000	3.2000e-004	0.0000		0.0000	0.0000		0.0000	0.0000	0.0000	6.3000e-004	6.3000e-004	0.0000	0.0000	6.7000e-004

## 6.2 Area by SubCategory

### Unmitigated

	ROG	NOx	CO	SO2	Fugitive PM10	Exhaust PM10	PM10 Total	Fugitive PM2.5	Exhaust PM2.5	PM2.5 Total	Bio- CO2	NBio- CO2	Total CO2	CH4	N2O	CO2e
SubCategory	tons/yr										MT/yr					
Architectural Coating	6.3200e-003					0.0000	0.0000		0.0000	0.0000	0.0000	0.0000	0.0000	0.0000	0.0000	0.0000
Consumer Products	0.0205					0.0000	0.0000		0.0000	0.0000	0.0000	0.0000	0.0000	0.0000	0.0000	0.0000
Landscaping	3.0000e-005	0.0000	3.2000e-004	0.0000		0.0000	0.0000		0.0000	0.0000	0.0000	6.3000e-004	6.3000e-004	0.0000	0.0000	6.7000e-004
<b>Total</b>	<b>0.0269</b>	<b>0.0000</b>	<b>3.2000e-004</b>	<b>0.0000</b>		<b>0.0000</b>	<b>0.0000</b>		<b>0.0000</b>	<b>0.0000</b>	<b>0.0000</b>	<b>6.3000e-004</b>	<b>6.3000e-004</b>	<b>0.0000</b>	<b>0.0000</b>	<b>6.7000e-004</b>

### Mitigated

	ROG	NOx	CO	SO2	Fugitive PM10	Exhaust PM10	PM10 Total	Fugitive PM2.5	Exhaust PM2.5	PM2.5 Total	Bio- CO2	NBio- CO2	Total CO2	CH4	N2O	CO2e
SubCategory	tons/yr										MT/yr					
Architectural Coating	6.3200e-003					0.0000	0.0000		0.0000	0.0000	0.0000	0.0000	0.0000	0.0000	0.0000	0.0000
Consumer Products	0.0205					0.0000	0.0000		0.0000	0.0000	0.0000	0.0000	0.0000	0.0000	0.0000	0.0000
Landscaping	3.0000e-005	0.0000	3.2000e-004	0.0000		0.0000	0.0000		0.0000	0.0000	0.0000	6.3000e-004	6.3000e-004	0.0000	0.0000	6.7000e-004
<b>Total</b>	<b>0.0269</b>	<b>0.0000</b>	<b>3.2000e-004</b>	<b>0.0000</b>		<b>0.0000</b>	<b>0.0000</b>		<b>0.0000</b>	<b>0.0000</b>	<b>0.0000</b>	<b>6.3000e-004</b>	<b>6.3000e-004</b>	<b>0.0000</b>	<b>0.0000</b>	<b>6.7000e-004</b>

## 7.0 Water Detail

---

### 7.1 Mitigation Measures Water

Install Low Flow Bathroom Faucet

Install Low Flow Kitchen Faucet

Install Low Flow Toilet

Install Low Flow Shower

Use Water Efficient Irrigation System

	Total CO2	CH4	N2O	CO2e
Category	MT/yr			
Mitigated	5.7444	0.0398	9.8000e-004	7.0310
Unmitigated	7.1209	0.0497	1.2200e-003	8.7289

### 7.2 Water by Land Use

#### Unmitigated

	Indoor/Outdoor Use	Total CO2	CH4	N2O	CO2e
Land Use	Mgal	MT/yr			
Fast Food Restaurant with Drive-Thru Parking Lot	1.51767 / 0.0968725	7.1209	0.0497	1.2200e-003	8.7289
	0 / 0	0.0000	0.0000	0.0000	0.0000

Total		7.1209	0.0497	1.2200e-003	8.7289
-------	--	--------	--------	-------------	--------

**Mitigated**

	Indoor/Outdoor Use	Total CO2	CH4	N2O	CO2e
Land Use	Mgal	MT/yr			
Fast Food Restaurant with Drive Thru	1.21413 / 0.0909632	5.7444	0.0398	9.8000e-004	7.0310
Parking Lot	0 / 0	0.0000	0.0000	0.0000	0.0000
<b>Total</b>		<b>5.7444</b>	<b>0.0398</b>	<b>9.8000e-004</b>	<b>7.0310</b>

**8.0 Waste Detail**

**8.1 Mitigation Measures Waste**

Institute Recycling and Composting Services

**Category/Year**

	Total CO2	CH4	N2O	CO2e
	MT/yr			
Mitigated	5.8451	0.3454	0.0000	14.4811
Unmitigated	11.6903	0.6909	0.0000	28.9621



## 8.2 Waste by Land Use

### Unmitigated

	Waste Disposed	Total CO2	CH4	N2O	CO2e
Land Use	tons	MT/yr			
Fast Food Restaurant with Drive Thru Parking Lot	57.59	11.6903	0.6909	0.0000	28.9621
	0	0.0000	0.0000	0.0000	0.0000
<b>Total</b>		<b>11.6903</b>	<b>0.6909</b>	<b>0.0000</b>	<b>28.9621</b>

### Mitigated

	Waste Disposed	Total CO2	CH4	N2O	CO2e
Land Use	tons	MT/yr			
Fast Food Restaurant with Drive Thru Parking Lot	28.795	5.8451	0.3454	0.0000	14.4811
	0	0.0000	0.0000	0.0000	0.0000
<b>Total</b>		<b>5.8451</b>	<b>0.3454</b>	<b>0.0000</b>	<b>14.4811</b>

## 9.0 Operational Offroad

Equipment Type	Number	Hours/Day	Days/Year	Horse Power	Load Factor	Fuel Type
----------------	--------	-----------	-----------	-------------	-------------	-----------

## 10.0 Stationary Equipment

### Fire Pumps and Emergency Generators



Equipment Type	Number	Hours/Day	Hours/Year	Horse Power	Load Factor	Fuel Type
----------------	--------	-----------	------------	-------------	-------------	-----------

**Boilers**

Equipment Type	Number	Heat Input/Day	Heat Input/Year	Boiler Rating	Fuel Type
----------------	--------	----------------	-----------------	---------------	-----------

**User Defined Equipment**

Equipment Type	Number
----------------	--------

**11.0 Vegetation**

---