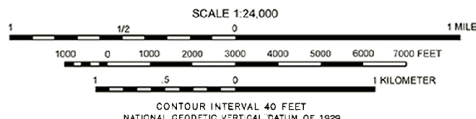
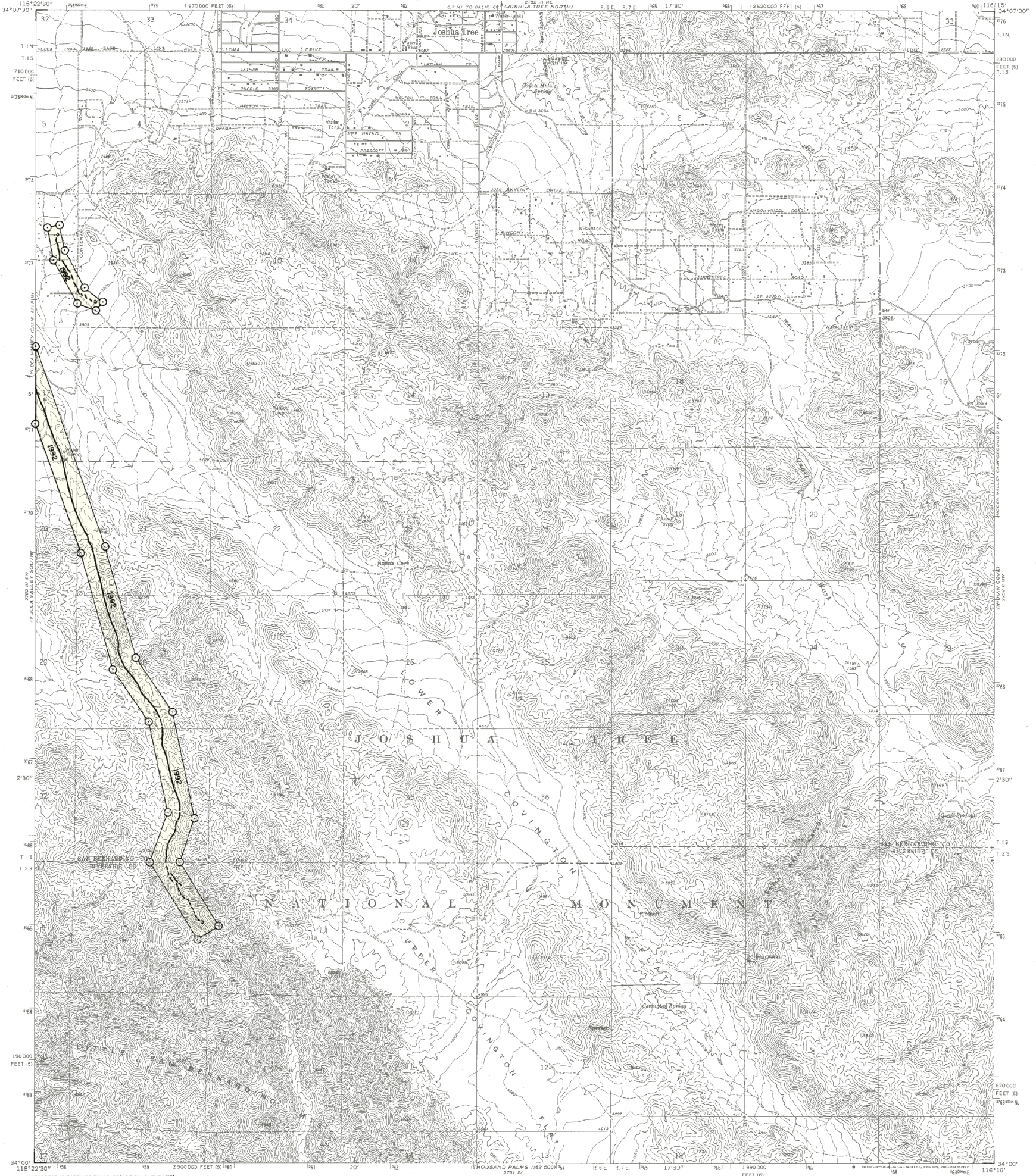


DIVISION OF MINES AND GEOLOGY  
 JAMES F. DAVIS, STATE GEOLOGIST



REFERENCES USED TO COMPILE FAULT DATA

- Joshua Tree South Quadrangle
- Treiman, J.A., 1992, Eureka Peak and Burnt Mountain faults, two "new" faults in Yucca Valley, San Bernardino County, California in Eberold, D.B., ed., Landslide earthquake of June 28, 1992, San Bernardino County, California, field guidebook: Southern California Section of the Association of Engineering Geologists, Annual Field Trip, October 10, 1992, p. 19-22.
- Treiman, J.A., 1992, Eureka Peak and related faults, San Bernardino and Riverside Counties, California: California Division of Mines and Geology Fault Evaluation Report FER-230 (unpublished).

For additional information on faults in this map area, the rationale used for zoning, and additional references consulted, refer to unpublished Fault Evaluation Reports on file at regional offices of DMG.

IMPORTANT - PLEASE NOTE

- 1) This map may not show all faults that have the potential for surface fault rupture, either within the special studies zones or outside their boundaries.
- 2) Faults shown are the basis for establishing the boundaries of the special studies zones.
- 3) The identification and location of these faults are based on the best available data. However, the quality of data used is varied. Traces have been drawn as accurately as possible at this map scale.
- 4) Fault information on this map is not sufficient to serve as a substitute for the geologic site investigations (special studies) required under Chapter 7.5 of Division 2 of the California Public Resources Code.

MAP EXPLANATION

Active Faults

1900 C  
 Faults considered to have been active during Holocene time and to have a relatively high potential for surface rupture: solid line where accurately located, long dash where approximately located, short dash where inferred, dotted where concealed; query (?) indicates additional uncertainty. Evidence of historic offset indicated by year of earthquake-associated event or C for displacement caused by creep or possible creep.

Special Studies Zone Boundaries

○—○ These are delineated as straight-line segments that connect encircled turning points so as to define special studies zone segments.  
 —○ Seaward projection of zone boundary.

STATE OF CALIFORNIA  
**SPECIAL STUDIES ZONES**  
 Delineated in compliance with  
 Chapter 7.5, Division 2 of the California Public Resources Code  
 (Adopted-Preble Special Studies Zones Act)

JOSHUA TREE SOUTH QUADRANGLE  
**OFFICIAL MAP**  
 Effective: July 1, 1993

*James F. Davis* State Geologist