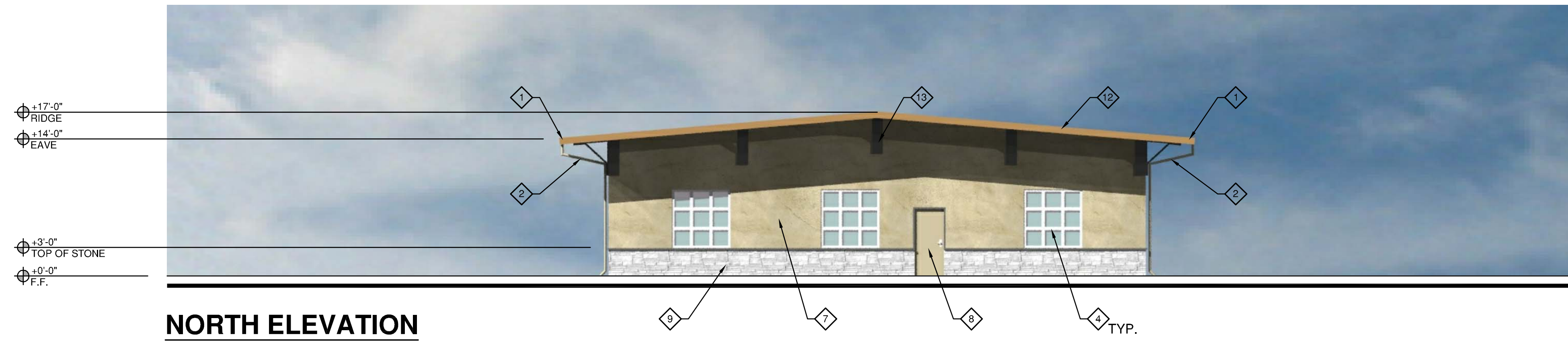
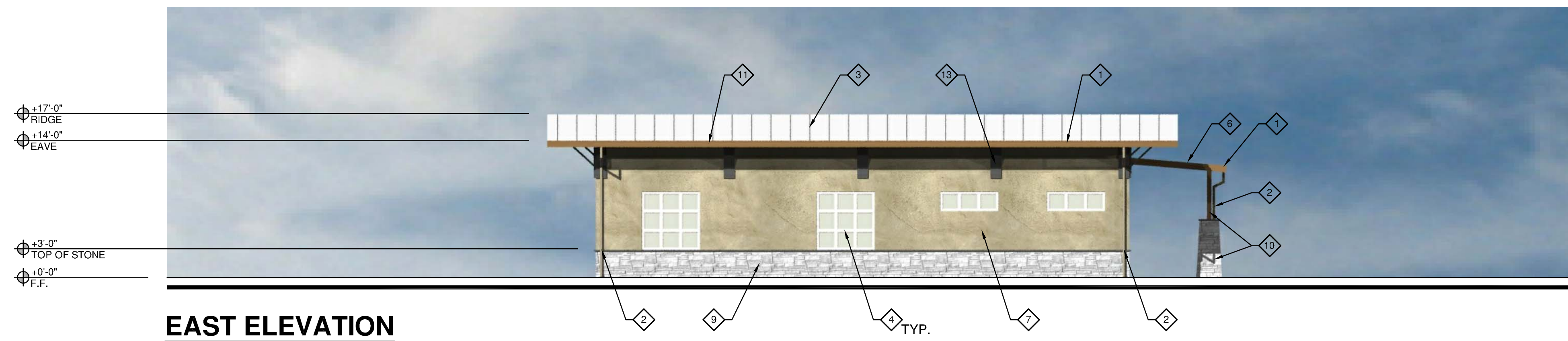


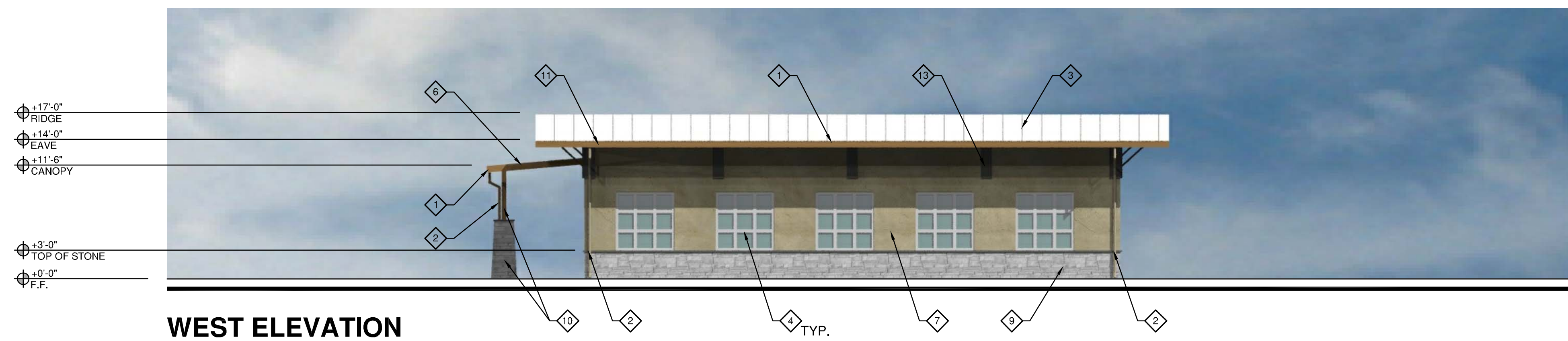
SOUTH ELEVATION



NORTH ELEVATION



EAST ELEVATION



WEST ELEVATION

KEYNOTES

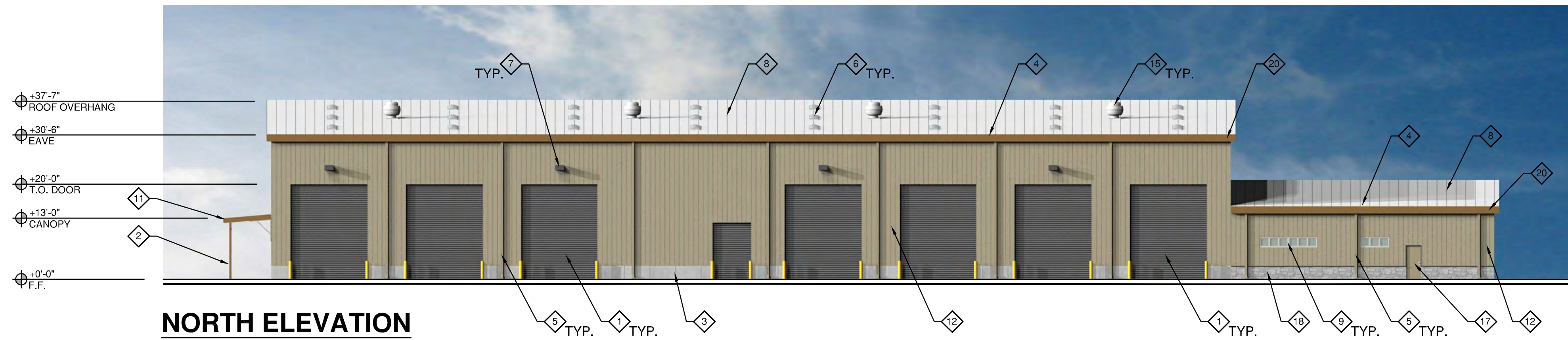
- 1 METAL GUTTER [D]
- 2 METAL DOWNSPOUT [D]
- 3 METAL ROOF PANEL [B]
- 4 STOREFRONT DUAL PANE WINDOWS [G,H]
- 5 STOREFRONT DOOR [G,H]
- 6 BUILDING CANOPY [D]
- 7 STUCCO WALL [A]
- 8 HOLLOW METAL DOOR [A]
- 9 DECORATIVE STONE [J]
- 10 STEEL COLUMN WITH STONE BASE [D,J]
- 11 EAVE TRIM [D]
- 12 RAKE TRIM [D]
- 13 ARCHITECTURAL CORBEL [C]

FINISH KEYNOTES

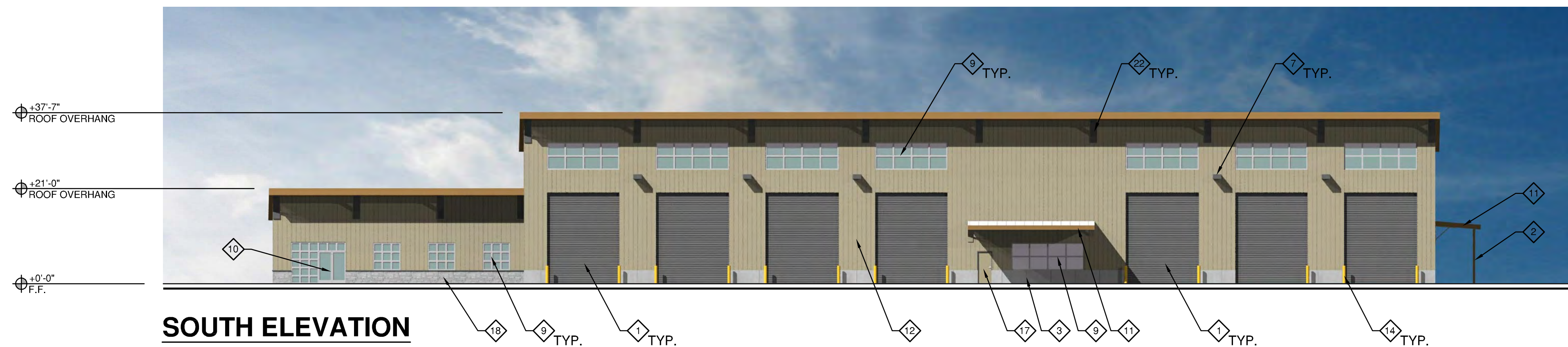
- A LAHABRA SANTA BARBARA MISSION FINISH: COLOR KHAKI OR EQUIVALENT
- B METAL SALES: LINEN WHITE OR EQUIVALENT
- C METAL SALES: SLATE GREY OR EQUIVALENT
- D METAL SALES: TERRA COTTA OR EQUIVALENT
- E CLEAR CONCRETE SEALER
- F CAUTION YELLOW
- G CLEAR FINISH ALUMINUM
- H GLAZING COLOR: PPG AZURIA
- J ELDORADO STONE: BLUFFSTONE - MINERET

SCALE: 1/8"=1'-0"
 0 4 8 16 32

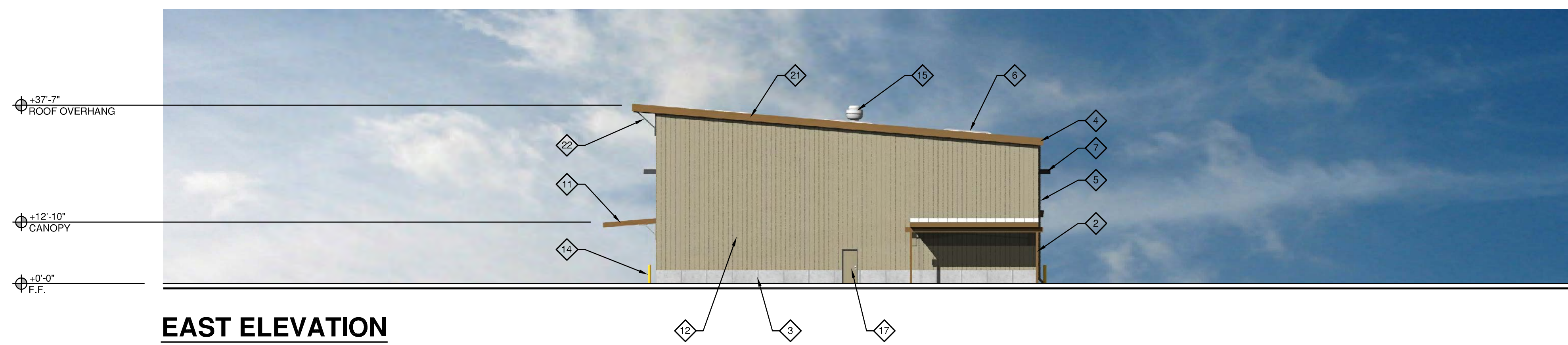
BURRTEC WASTE & RECYCLING FACILITY
 YUCCA VALLEY, CALIFORNIA



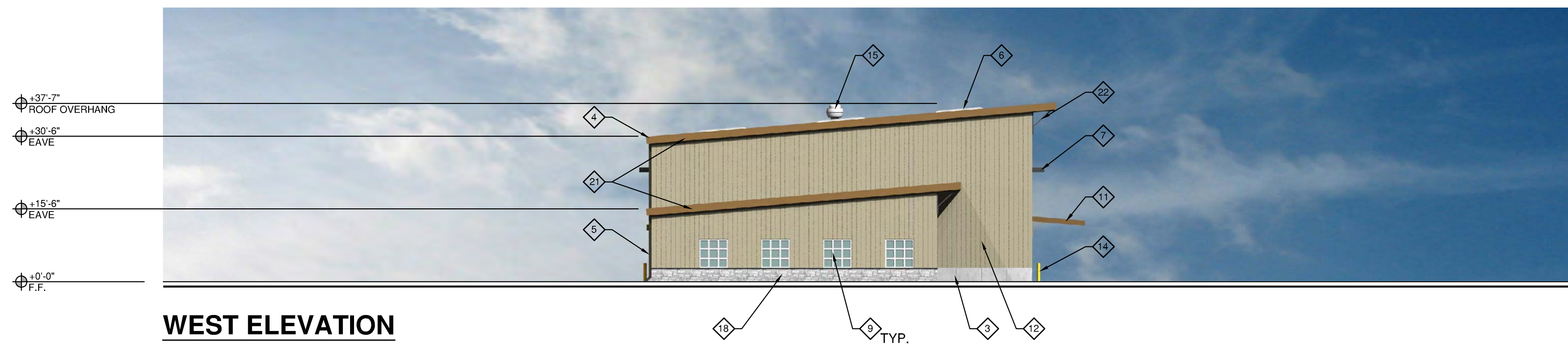
NORTH ELEVATION



SOUTH ELEVATION



EAST ELEVATION



WEST ELEVATION

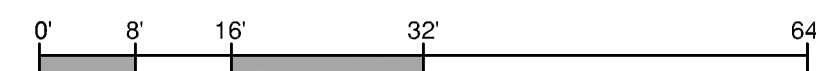
KEYNOTES

- 1 OVERHEAD COILING DOOR [C]
- 2 STEEL COLUMN [C]
- 3 CONCRETE WALL [E]
- 4 METAL GUTTER [D]
- 5 METAL DOWNSPOUT [A]
- 6 SKYLIGHT
- 7 LIGHTING FIXTURE [C]
- 8 METAL ROOF PANEL [B]
- 9 STOREFRONT DUAL PANE WINDOWS [G][H]
- 10 STOREFRONT DOOR [G][H]
- 11 BUILDING CANOPY [D]
- 12 VERTICAL METAL WALL PANEL [A]
- 13 NOT USED
- 14 BOLLARD [F]
- 15 EXHAUST FAN
- 16 NOT USED
- 17 HOLLOW METAL DOOR [A]
- 18 DECORATIVE STONE [J]
- 19 NOT USED
- 20 EAVE TRIM [D]
- 21 RAKE TRIM [D]
- 22 ARCHITECTURAL CORBEL [C]

FINISH KEYNOTES

- [A] METAL SALES: KHAKI OR EQUIVALENT
- [B] METAL SALES: LINEN WHITE OR EQUIVALENT
- [C] METAL SALES: SLATE GREY OR EQUIVALENT
- [D] METAL SALES: TERRA COTTA OR EQUIVALENT
- [E] CLEAR CONCRETE SEALER
- [F] CAUTION YELLOW
- [G] CLEAR FINISH ALUMINUM
- [H] GLAZING COLOR: PPG AZURIA
- [J] ELDORADO STONE: BLUFFSTONE - MINERET

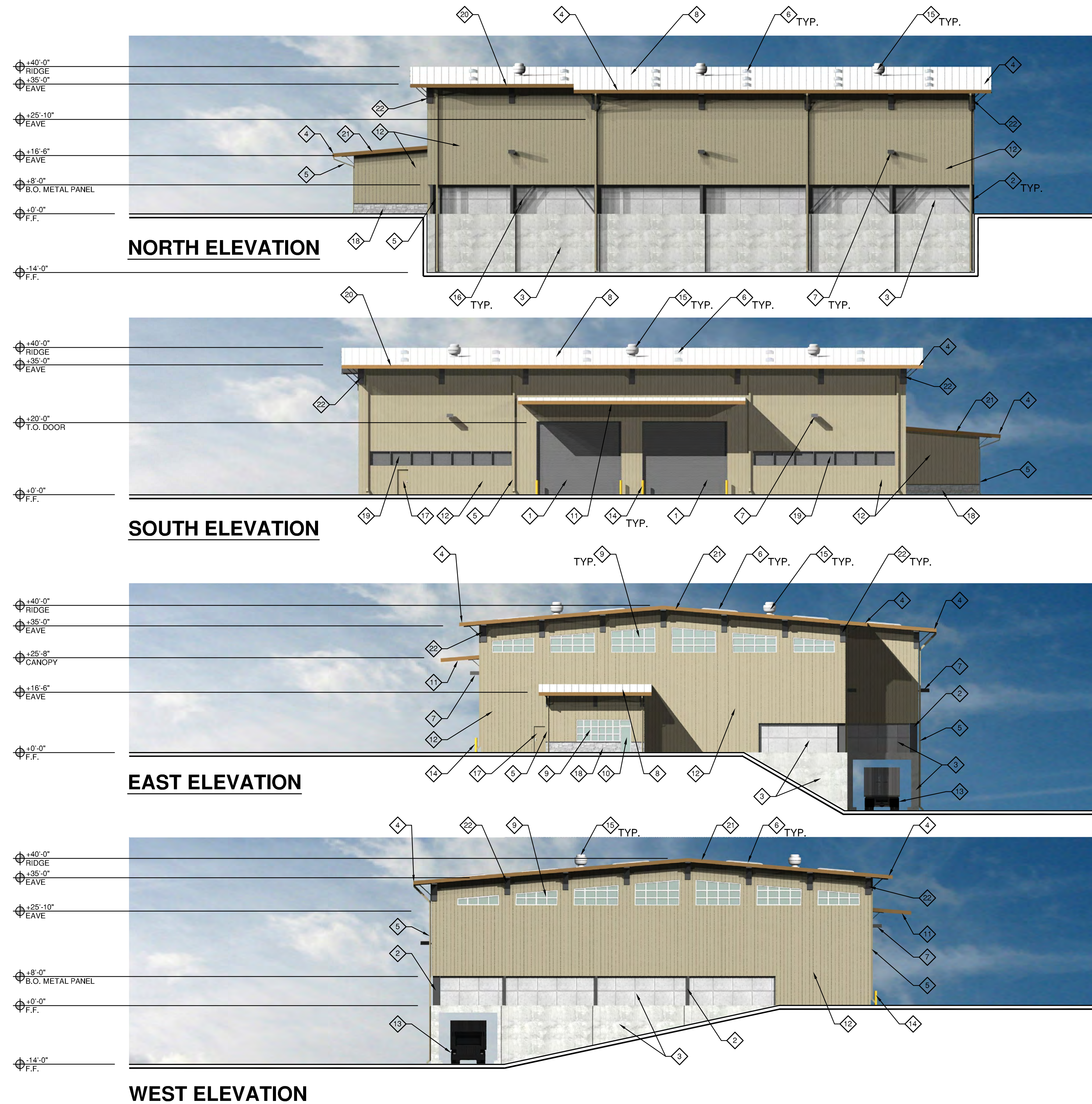
SCALE: 1/16"=1'-0"



BURRTEC WASTE & RECYCLING FACILITY

YUCCA VALLEY, CALIFORNIA

A3.2
MAINTENANCE BUILDING EXTERIOR ELEVATIONS



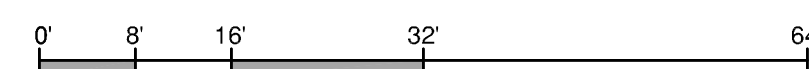
KEYNOTES

- 1 OVERHEAD COILING DOOR [C]
- 2 STEEL COLUMN [C]
- 3 CONCRETE WALL [E]
- 4 METAL GUTTER [D]
- 5 METAL DOWNSPOUT [A]
- 6 SKYLIGHT
- 7 LIGHTING FIXTURE [C]
- 8 METAL ROOF PANEL [B]
- 9 STOREFRONT DUAL PANE WINDOWS [G][H]
- 10 STOREFRONT DOOR [G][H]
- 11 BUILDING CANOPY [D]
- 12 VERTICAL METAL WALL PANEL [A]
- 13 LOADOUT TUNNEL
- 14 BOLLARD [F]
- 15 EXHAUST FAN
- 16 STEEL BRACING [C]
- 17 HOLLOW METAL DOOR [A]
- 18 DECORATIVE STONE [J]
- 19 MECHANICAL LOUVER [C]
- 20 EAVE TRIM [D]
- 21 RAKE TRIM [D]
- 22 ARCHITECTURAL CORBEL [C]

FINISH KEYNOTES

- [A] METAL SALES: KHAKI OR EQUIVALENT
- [B] METAL SALES: LINEN WHITE OR EQUIVALENT
- [C] METAL SALES: SLATE GREY OR EQUIVALENT
- [D] METAL SALES: TERRA COTTA OR EQUIVALENT
- [E] CLEAR CONCRETE SEALER
- [F] CAUTION YELLOW
- [G] CLEAR FINISH ALUMINUM
- [H] GLAZING COLOR: PPG AZURIA
- [J] ELDORADO STONE: BLUFFSTONE - MINERET

SCALE: 1/16"=1'-0"



BURRTEC WASTE & RECYCLING FACILITY

YUCCA VALLEY, CALIFORNIA

A3.3 TRANSFER STATION EXTERIOR ELEVATIONS