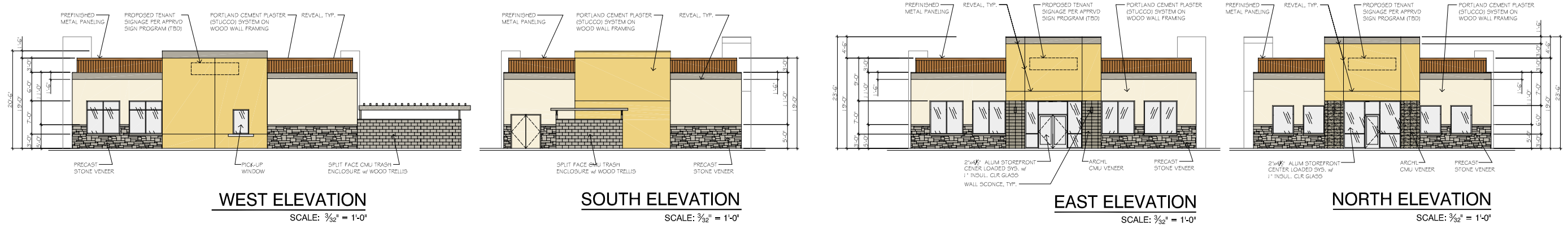


REVISIONS	BY
SITE PLAN REVIEW & CUP SUBMITTAL 4-22-13	MC



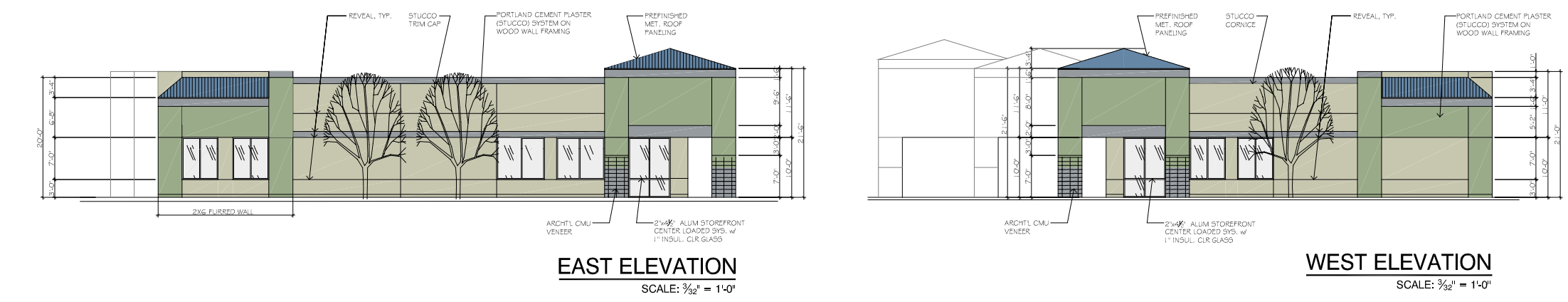
**WEST ELEVATION**  
SCALE: 3/32" = 1'-0"

**SOUTH ELEVATION**  
SCALE: 3/32" = 1'-0"

**EAST ELEVATION**  
SCALE: 3/32" = 1'-0"

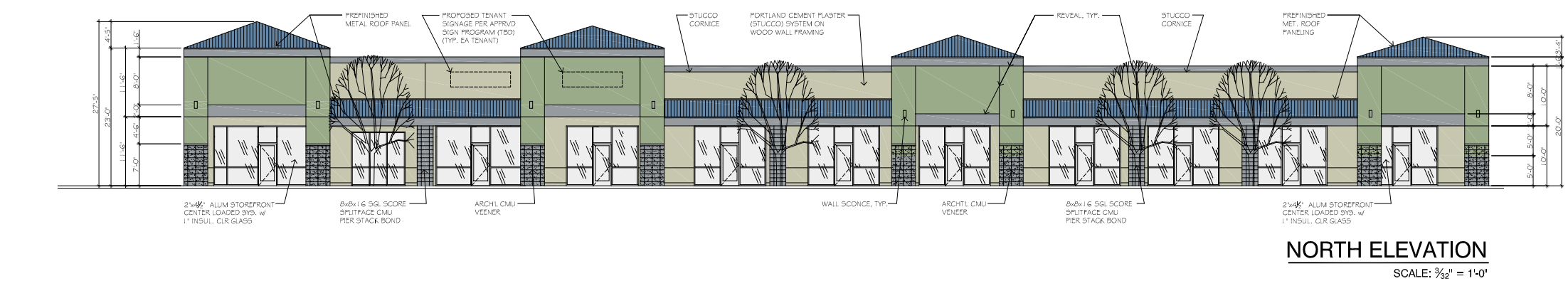
**NORTH ELEVATION**  
SCALE: 3/32" = 1'-0"

**FAST FOOD BUILDING ELEVATIONS** SCALE: 3/32" = 1'-0" **2**

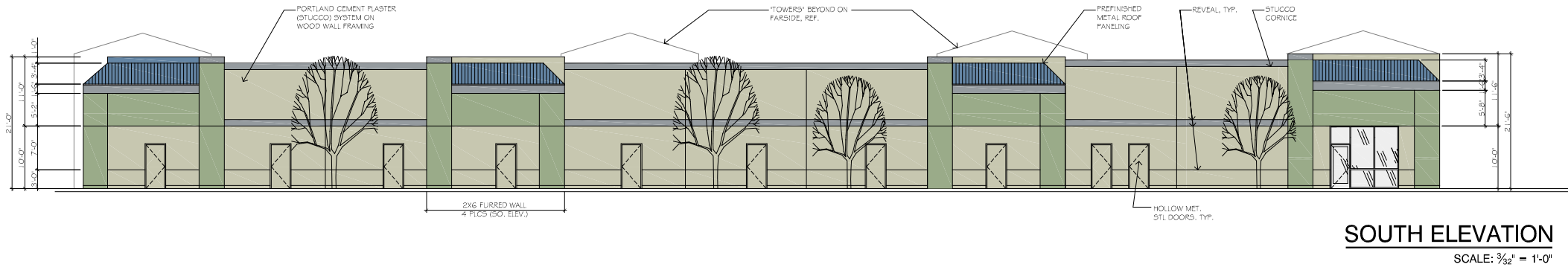


**EAST ELEVATION**  
SCALE: 3/32" = 1'-0"

**WEST ELEVATION**  
SCALE: 3/32" = 1'-0"



**NORTH ELEVATION**  
SCALE: 3/32" = 1'-0"



**SOUTH ELEVATION**  
SCALE: 3/32" = 1'-0"

**RETAIL BUILDING ELEVATIONS** SCALE: 3/32" = 1'-0" **1**

**MICHAEL CALEY**  
ARCHITECT  
200 LAKEVIEW BLVD., SUITE 200, FOLSOM, CA 95115  
(916) 448-8888 FAX (916) 877-4132

**PRESCOTT RETAIL CENTER  
FOR FORCE-GOTTLIEB LLC**  
58401 29 PALMS HIGHWAY, YUCCA VALLEY, CA 92284

DESIGN BY	MC
CHECKED BY	3/32" = 1'-0"
DATE	APRIL 30, 2013
DRAWN BY	CMF/PRESCOTT-ELEV-(3-22-13)
SCALE	
SHEET	<b>A3</b>
OF	SHEET