

LEGAL DESCRIPTION
 A.P.N. 588-082-26
 THE SOUTH ONE HALF OF THE SOUTHWEST QUARTER OF SECTION 8, TOWNSHIP 1 SOUTH, RANGE 9 EAST, SAN BERNARDINO COUNTY AND MERIDIAN

EASEMENTS
 1. A TEN FOOT WIDE EASEMENT IN FAVOR OF GENERAL TELEPHONE COMPANY OF CALIFORNIA FOR MAINTENANCE AND OPERATION OF TELEPHONE LINES AND CABLES RECORDED MAP 20, 1981 INSTRUMENT NO. 171388 O.R.

UTILITY COMPANIES

WATER
 SAN BERNARDINO COUNTY WATER SERVICE
 1500 WEST 9TH STREET
 ANAHEIM, CALIFORNIA 92804
 PHONE: (714) 222-4433

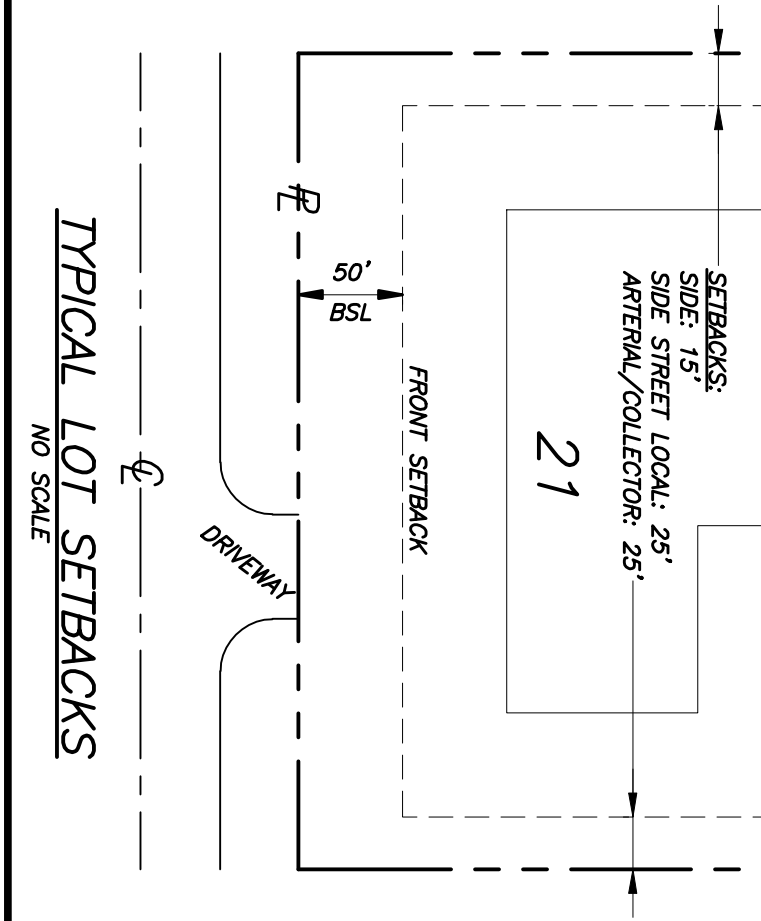
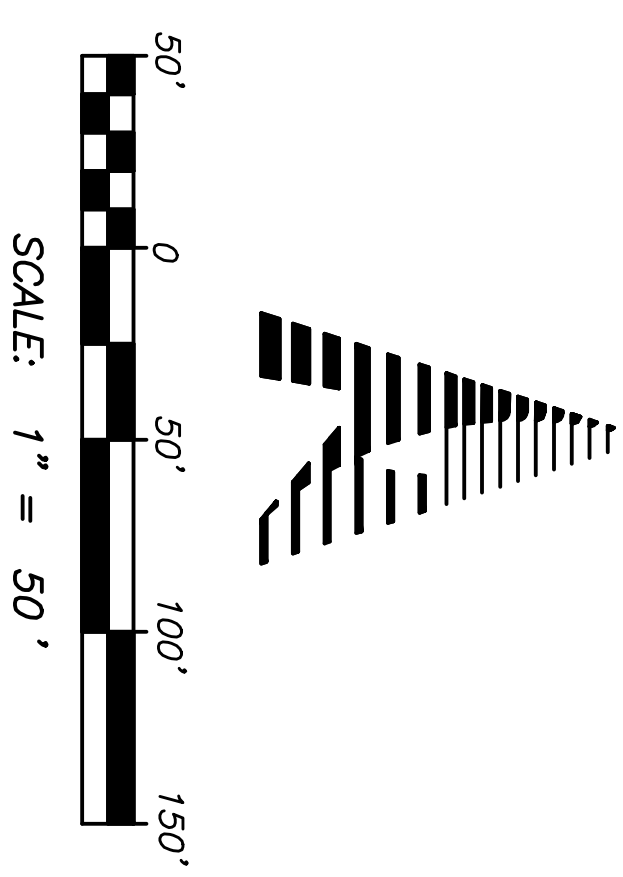
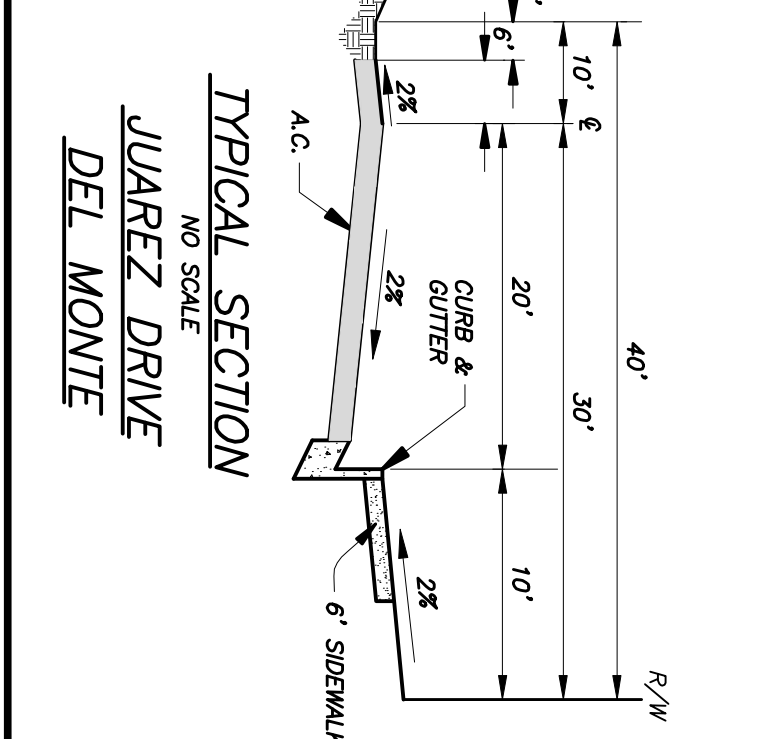
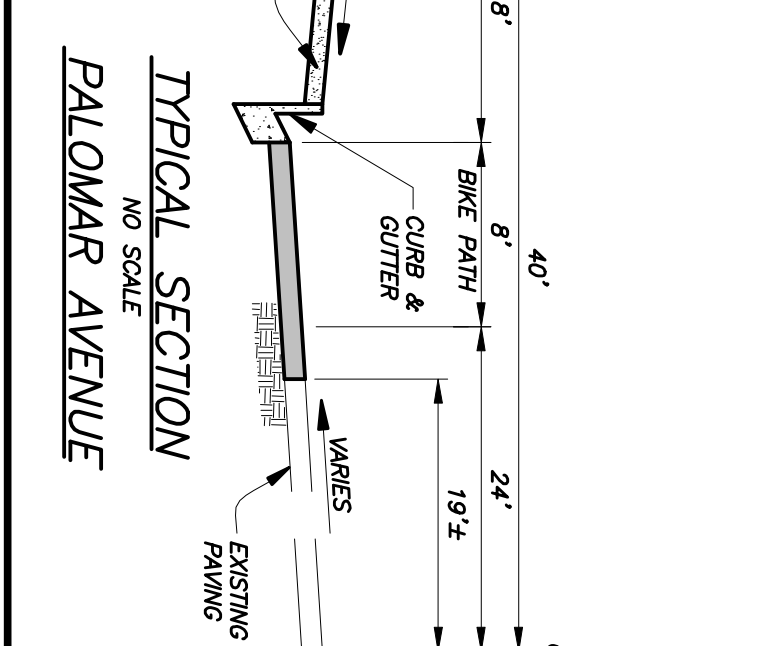
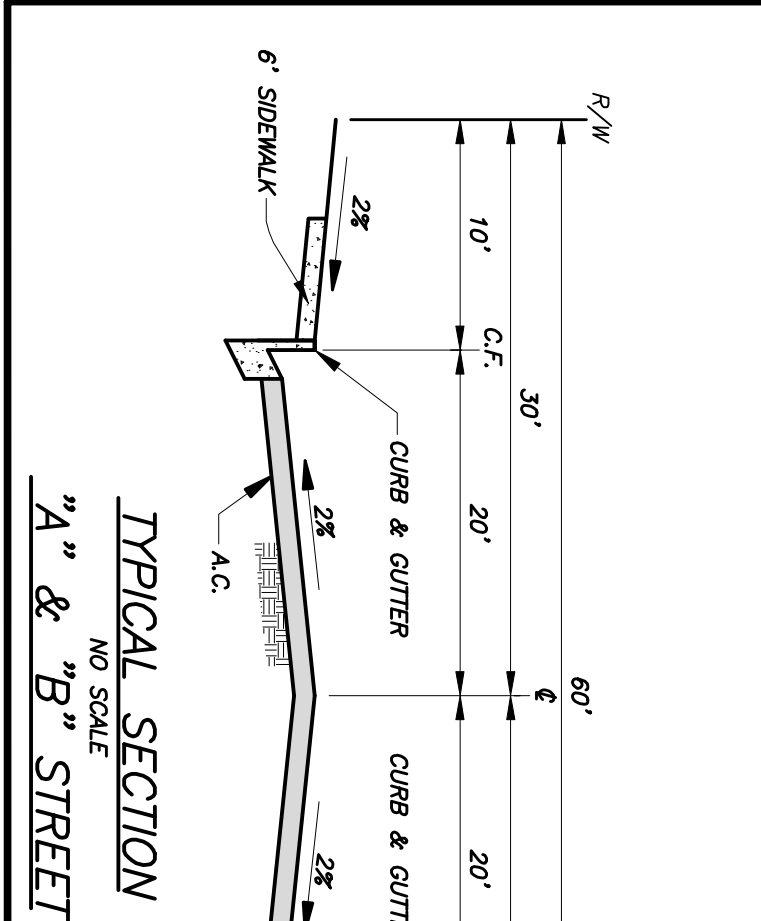
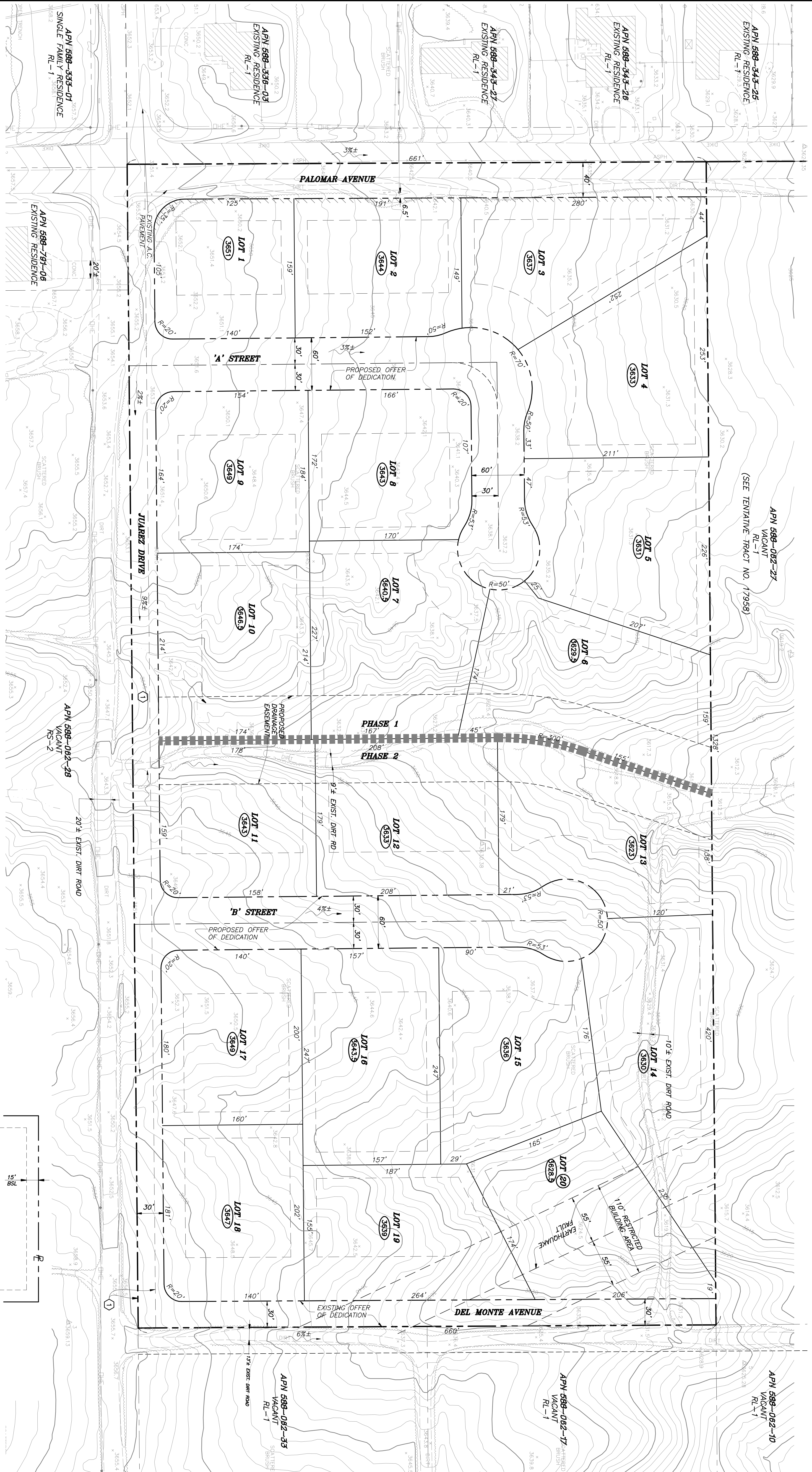
TELEPHONE
 WESTERN TELEPHONE SERVICE
 1500 WEST 9TH STREET
 ANAHEIM, CALIFORNIA 92804
 PHONE: (714) 222-4433

GAS
 THE GAS COMPANY
 1500 WEST 9TH STREET
 ANAHEIM, CALIFORNIA 92804
 PHONE: (714) 222-4433

7.5' CABLE
 THE CABLE COMPANY
 1500 WEST 9TH STREET
 ANAHEIM, CALIFORNIA 92804
 PHONE: (714) 222-4433

ELECTRICITY
 SOUTHWEST CALIFORNIA POWER AND LIGHT
 1500 WEST 9TH STREET
 ANAHEIM, CALIFORNIA 92804
 PHONE: (714) 222-4433

IN THE TOWN OF YUCCA VALLEY, COUNTY OF SAN BERNARDINO
TENTATIVE TRACT No. 17985
 DECEMBER 2008



LEGEND

--- PROPOSED NON-VEHICULAR ACCESS

--- DRAINAGE FLOW ARROW

--- TRACT BOUNDARY

--- APPROXIMATE PAID EASEMENT

(357) PROPOSED TOWN OF YUCCA VALLEY DRAINAGE EASEMENT (APRY, WITH SHOWN) SETBACK LINE

--- PROPOSED PHASE LINE

--- OVERHEAD ELECTRIC

--- EXISTING POWER POLE

PREPARED BY
 THE ENGINEER
 JOHN W. HARRIS
 1111 WEST 11TH STREET
 ANAHEIM, CALIFORNIA 92804
 PHONE: (714) 222-4433

PREPARED FOR (APPLICANT)
 TERRY COLLETT
 1111 WEST 11TH STREET
 ANAHEIM, CALIFORNIA 92804
 (602) 574-8440 EXT 11

OWNER
 OAS INVESTMENTS, LLC
 1000 WEST 9TH STREET, SUITE 100
 ANAHEIM, CA 92805

PROJECT DESCRIPTION
 20 LOTS WITH 3,200± LINEAR FEET OF NEW STREETS

EXISTING LAND USE
 VACANT

EXISTING ZONING
 RL-1

CURRENT AND PROPOSED ZONING/GENERAL PLAN
 RL-1

ASSESSOR'S PARCEL NUMBERS
 588-082-26

NOTES
 1. LOCATED IN FEMA ZONE D, IN WHICH FLOOD AREAS ARE UNDERMINED.
 2. RETENTION FACILITIES TO BE LOCATED ON EACH LOT (1000 C.F. MIN. STORAGE REQUIRED).
 3. TREE/PLANT LOCATIONS SHOWN HEREON WHERE DONE BY ANGELO M. RESNER SR. ON JULY 2008.
 4. BUILDING TYPE AND LOCATION TO BE DETERMINED AT A LATER TIME.

AREA OF LOTS

LOT	ACRES	GROSS AREA	NET AREA
1	4.5305	1,577.91	1,577.91
2	4.5305	1,577.91	1,577.91
3	4.5305	1,577.91	1,577.91
4	4.5305	1,577.91	1,577.91
5	4.5305	1,577.91	1,577.91
6	4.5305	1,577.91	1,577.91
7	4.5305	1,577.91	1,577.91
8	4.5305	1,577.91	1,577.91
9	4.5305	1,577.91	1,577.91
10	4.5305	1,577.91	1,577.91
11	4.5305	1,577.91	1,577.91
12	4.5305	1,577.91	1,577.91
13	4.5305	1,577.91	1,577.91
14	4.5305	1,577.91	1,577.91
15	4.5305	1,577.91	1,577.91
16	4.5305	1,577.91	1,577.91
17	4.5305	1,577.91	1,577.91
18	4.5305	1,577.91	1,577.91
19	4.5305	1,577.91	1,577.91
20	4.5305	1,577.91	1,577.91

