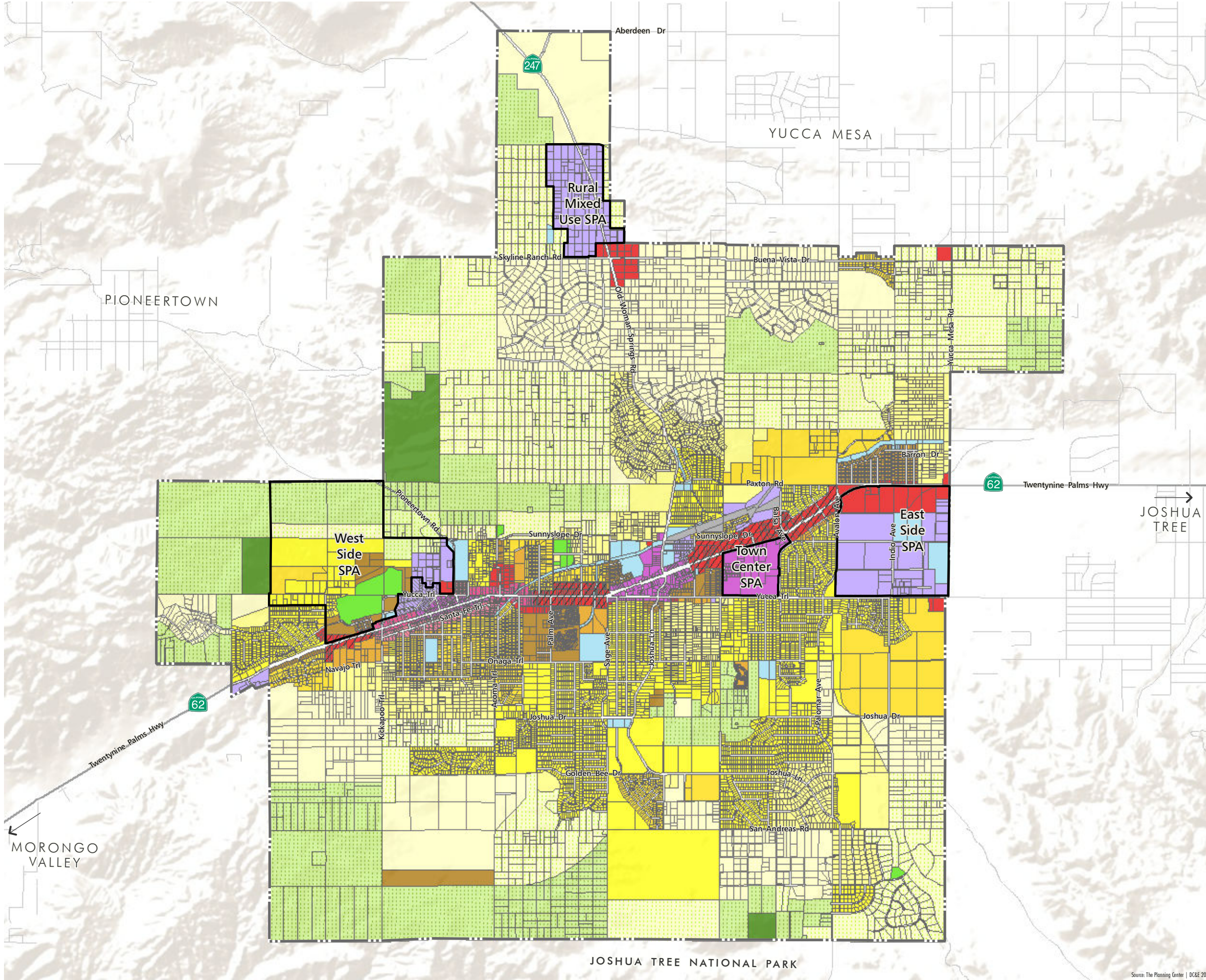


Figure LU-1

# GENERAL PLAN LAND USE



## GENERAL PLAN DESIGNATION

- Hillside Residential (HR) 20 ac min
  - Rural Living (RL-10) 10 ac min
  - Rural Living (RL-5) 5 ac min
  - Rural Residential (RR-2.5) 2.5 ac min
  - Rural Residential (RR-1) 1 ac min
  - Rural Residential (RR-0.5) 0.5 ac min
  - Low Density Residential (LDR) 2.1-5.0 du/ac
  - Medium Density Residential (MDR) 5.1-8.0 du/ac
  - Medium High Density Res. (MHDR) 8.1-14.0 du/ac
  - Commercial (C)
  - Mixed Use (MU)
  - Industrial (I)
  - Open Space - Conservation (OSC)
  - Open Space - Recreation (OSR)
  - Public/Quasi-Public (P/QP)
  - Airport (A)
- Old Town Specific Plan
- Old Town Industrial/Commercial (OTIC)
  - Old Town Mixed Use (OTMU)
  - Old Town Commercial/Residential (OTCR)
  - Old Town Highway Commercial (OTHC)
- Special Policy Areas and Overlays
- Corridor Residential Overlay
  - SPA - Special Policy Area
  - Town Limits

Source: The Planning Center | DC&E 2012